

Product datasheet for **MG224859**

Sept9 (NM_001113486) Mouse Tagged ORF Clone

Product data:

Product Type:	Expression Plasmids
Product Name:	Sept9 (NM_001113486) Mouse Tagged ORF Clone
Tag:	TurboGFP
Symbol:	Sept9
Synonyms:	Msf; MSF1; PNUTL4; Sint1
Mammalian Cell Selection:	Neomycin
Vector:	pCMV6-AC-GFP (PS100010)
E. coli Selection:	Ampicillin (100 ug/mL)



[View online »](#)

ORF Nucleotide Sequence:

>MG224859 representing NM_001113486
 Red=Cloning site Blue=ORF Green=Tags(s)

TTTTGTAATACGACTCACTATAGGGCGGCCGGAATTCGTCGACTGGATCCGGTACCGAGGAGATCTGCC
 GCC**GCGATCGCC**

ATGAAGAAGTCTACTCAGGAGTCACACGGACCTCCAGCGGTGCGCTCCGGAGGCTTGGGATCCCCTG
 GCCAGCCTTAAAGAGATCGTTTGAAGTCGAGGAGATTGAGCCGCCCAACTCCACGCCACCCCGAGGGT
 CCAGACCCTCTGCTCCGCGCCACGGTGGCCAGCTCCAGCCAGAAATTCAGGACCTGGGGTGAAGAAC
 TCAGAGCCGCTGCCGCCTTGTAGACTCCCTGAGCCAGCGCTCCCCAAGCCTTCCCTGCGGAGGGTGG
 AGCTGGCGGGAGCCAAGGCGCTGAGCCCATGTCTCGACGCACAGAGATCTCCATCGACATCTCTCCAA
 GCAGGTGGAGAGCACGGCTCCGCTGCCGGGCCCTCACGGTTCGGCTTAAAGAGGGCTGAAGTCTGGGC
 CACAAGACCCAGAGCCTGTCCCTCGGAGGACGGAGATCACCATTGTCAAGCCTCAGGAGTCAGTGTCC
 GCAGGGTGGAGACCCCTGCCTCAAGATTCCCAGGGCTCTGCCGTGCCACAGATGCAGCCCCAA
 GAGGGTAGAGATCCAGGTGCCAAGCCAGCTGAGGCACCAACTGTCCGCTCCCGTCCCAGACCCTGGAG
 AACTCCGAGGCCCGATGTCTCAACTGCAGAGCAGGCTGGAGCCAGGCCCTCCGTGGCTGAGGTCCCAT
 ATCGGAACCAGGAAGACTCCGAGGTGACTCCAGCTGTGTTGGCGACATGGCTGACAACCCTAGAGATGC
 CATGCTCAAGCAGGCCCCCGCTCACGGAACGAAAAGGCCCCATGGAGTTCCGGCTATGTGGGGATCGAC
 TCCATCTGGAGCAGATGCGCAGGAAGGCTATGAAACAGGGCTTCGAGTTAACATCATGGTGGTTGGGC
 AGAGCGGCCTCGGGAAGTCCACTTAAATCAATACCCTCTCAAGTCCAAAATCAGCCGGAAGTCGGTGA
 GCCACCTCGGAGAACGCATCCCCAAGACGATCGAAATCAAGTCGATCACCCACGATATTGAAGAGAAG
 GGGGTTCAAGTGAAGTACAGTATTGACACGCCGGCTTCGGAGACCACATCAACAATGAGAAGTCAACATCAACCG
 GAAGAAGCGCATTCCCGACACCCGTGCCACTGCTGCCTTACTTCATCCAGCCACCGGCCACTCGCTC
 AGGCCCTGGACATTGAATTCATGAAGCCCTAAGCAAAGTGGTGAACATTGTCCAGTCATCGCCAAGG
 CTGACACGCTGACCCTGGAGGAGAGGGTCTACTCAAACAGCGGATCACTGCAGACCTGTGTCCAACGG
 CATTGACGTGTACCCGCAGAAGGAGTTTGTGAGGACGCAGAAGACCGGCTGGTGAACGAAAAGTCCGG
 GAGATGATCCATTTGCTGTGGTGGCAGCACCATGAGTATCAAGTCAATGGCAAGAGGATTCTGGGAA
 GGAAGACCAAGTGGGCACTATCGAAGTTGAGAATACCACTCACTGTGAATTTGCTTACCTGCGGGATCT
 CCTTATCAGGACGCACATGCAAAACATCAAAGACATCACCAGCAACATCCACTTCGAAGCCTACCGAGTG
 AAACGCCCTCAACGAGGGCAACAGCGCCATGGCCAACGGGATCGAGAAGGAGCCGGAAGCCAGGAGATG

ACGCGTACGCGGCCGCTCGAG – GFP Tag – GTTTAA

Protein Sequence:

>MG224859 representing NM_001113486
 Red=Cloning site Green=Tags(s)

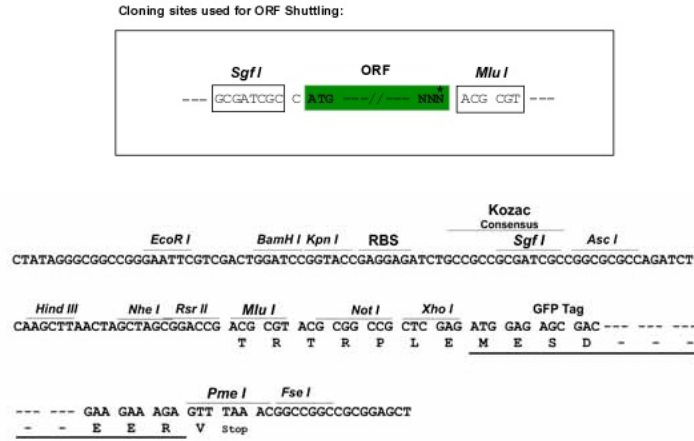
MKKSYSVTRTSSGRLRRLADPTGPALKRSFEVEEIEPPNSTPPRRVQTPLLRATVASSSQKFQDLGVKN
 SEPAARLVDSLQRSPKPSLRRVELAGAKAPEPMSRREISIDISSKQVESTASAAGPSRFGLKRAEVLG
 HKTPEVPVPRTEITIVKPQESVLRVETPASKIPEGSAPATDAAPKRVEIQVPKPAEAPNCLPSQTL
 NSEAPMSQLQSRLEPRPSVAEVPYRNQEDSEVTPSCVGMADNPRDAMLKQAPASRNEKAPMEFGYVGD
 SILEQMRRKAMKQGFENIMVVGQSLGKSTLINTLFKSKISRKSQPTSEERIPKTIEIKSITHDIEEK
 GVRMKLTVIDTPFGFDHINNENCWQPIMKFINDQYKYLQEEVNIINRKRIPDTRVHCLYFIPATGHSL
 RPLDIEFMKRLSKVNIIPVIAKADTLLEERVYFKQRITADLLSNGIDVYPQKFEDEDAEDRLVNEKFR
 EMIPFAVVGSDHEYQVNGKRILGRKTKWGTIEVENTHCEFAYLRDLLIRTHMQNIKDITSNIHFAYRV
 KRLNEGNSAMANGIEKEPEAQEM

TRTRPLE – GFP Tag – V

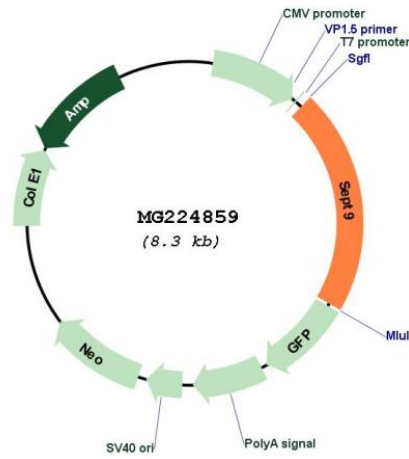
Restriction Sites:

Sgfl-MluI

Cloning Scheme:



Plasmid Map:



ACCN: NM_001113486
 ORF Size: 1749 bp

OTI Disclaimer:	The molecular sequence of this clone aligns with the gene accession number as a point of reference only. However, individual transcript sequences of the same gene can differ through naturally occurring variations (e.g. polymorphisms), each with its own valid existence. This clone is substantially in agreement with the reference, but a complete review of all prevailing variants is recommended prior to use. More info
OTI Annotation:	This clone was engineered to express the complete ORF with an expression tag. Expression varies depending on the nature of the gene.
Components:	The ORF clone is ion-exchange column purified and shipped in a 2D barcoded Matrix tube containing 10ug of transfection-ready, dried plasmid DNA (reconstitute with 100 ul of water).
Reconstitution Method:	<ol style="list-style-type: none">1. Centrifuge at 5,000xg for 5min.2. Carefully open the tube and add 100ul of sterile water to dissolve the DNA.3. Close the tube and incubate for 10 minutes at room temperature.4. Briefly vortex the tube and then do a quick spin (less than 5000xg) to concentrate the liquid at the bottom.5. Store the suspended plasmid at -20°C. The DNA is stable for at least one year from date of shipping when stored at -20°C.
RefSeq:	NM_001113486.1 , NP_001106958.1
RefSeq Size:	3616 bp
RefSeq ORF:	1752 bp
Locus ID:	53860
UniProt ID:	Q80UG5
Cytogenetics:	11 82.61 cM
Gene Summary:	Filament-forming cytoskeletal GTPase (By similarity). May play a role in cytokinesis (Potential). [UniProtKB/Swiss-Prot Function]