

## Product datasheet for **MG224848**

### Uspl1 (NM\_001115149) Mouse Tagged ORF Clone

#### Product data:

Product Type:	Expression Plasmids
Product Name:	Uspl1 (NM_001115149) Mouse Tagged ORF Clone
Tag:	TurboGFP
Symbol:	Uspl1
Synonyms:	E430026A01Rik
Mammalian Cell Selection:	Neomycin
Vector:	pCMV6-AC-GFP (PS100010)
E. coli Selection:	Ampicillin (100 ug/mL)
ORF Nucleotide Sequence:	>MG224848 representing NM_001115149 Red=Cloning site Blue=ORF Green=Tags(s)

TTTTGTAATACGACTCACTATAGGGCGGCCGGAATTCGTCGACTGGATCCGGTACCGAGGAGATCTGCC  
GCC**CGATCGCC**

ATGACGGGATGATTCTCTGAAGATTGAAATGGTTTGCCACTGGTTGGACCAGGGACTGATGTAGGGATAT  
CTTCACTCCCATGCTGGGGTACTTGGGAAAAAATTATGCTTCAGCTAAAGTCACAACAGACGGGCATTG  
CCCTGCTGTAGAGCGAAAGGCAAGCTAAGTGCCTTAAAACCTTACCGCATTAGCTTCCAAGAATCTGTC  
TTTCTGTGTGAGGATCTTCAGTGCATTTATCCTTTGGGCTCTGAGTCACTTACTAATTTAATTTCTCCTG  
ATTCAGAAGATTGCCACTCCAAGTAAGCCTCAAAAACGAAAAAGATTGGAAACCAACTGTAGGAATTC  
ACCTCTTCCAGTACATTCTAAAAAGACTAGAAGTCACATTGTCAGTATAGTGAACCAATTTGGAATGGT  
AAATATAATGGAGAAGTGTGTGATGACTTCTCAGCAAGCTTCCCAGATACCAGTGCTCACCAGGATCCTG  
CCAGCACAGCTGCTTCTGTGGAGCAGAGTGAGGCTTTGGAGGCTGATGATGTGGTTGTGGCCGCTACAGA  
AGATCCTGCTACAGTTAGTGTACATCTGAGCTGGAAATGCCAGCTAAGAGCAGATGTTTACCACCTTTCG  
CAGACTCTGTGTCCAGTGGAAAAACCCAGGCCCTGTGCTGGTTAGACTGTATCCTGTCAGCCCTGG  
TGCACTGGAGGTGTTGAGGAAGACTGTGCTGGAGGCGTCTCCAGGGAGGAGTGTGATTTGGAAGGCT  
GTTTGAATGTACCACCAAGCAGATGAGCTGCTGCACACCCATCACCTGCATGGCGTCACAGGTGAAGAT  
TGTAATAAATGACATCAGAAATATTTACAGAAATAGATACCTGTTTGAATAAAGTTAGAGATGAAATTT  
TTGCTAAACTTCAACCGAAGCTTAGATGCACATTAGGTGACATGGAAAGTCTGTGTTTGCACCTTCTGT  
ACTGTTAAAGCTTGAACCCCATGTTGAAAGCCTCTTTACATATTCTTTTTCTTGGAAATTTGAATGTTCC  
CATTGTGGACACCAGTACCAAAACAGGTGTGTGAAGAGTCTGGTACCTTTACCAATATTGTTCTGAGT  
GGCATCCACTCAATGCTGCCATTTTGGTCCATGTAACAGCTGCAACAGTAAATCACAAATAAGAAAAAT  
GGTGTGGAAAGAGCGTCGCCATACTCATGCTGCACTTCGTGGAGGGCTTACCAAGGAGGGATTGCAA  
CACTATGCCTTCCACTTTGAAGGAAGCCTTTATCAAGTCACGTCGGTAATACAGTACCAAGCAAATAACC  
ATTTTATAACATGGTTTTAGATGCTGATGGGAGTTGGCTGGAGTGTGATGACCTAAAGGGTCCCTGTGC  
TAAAGGCACGTGACCTGTGAAGTGCCAGCTTCAGAGACACATATCGTTATTTGGAAAGAAAATCCAG



[View online »](#)

GTGCCAATTGAAGAAGCTGCCTGCCTTCCATGCATGAAGCCAAATGTGCAGCCTGTATCAGGTGAGGAGC  
 AGCCGACTTGTCCAGCACTGTGTTCTCTGGCTGGGACCGCCACCTCAGAACCCCTCAGTCGCCATCCCAC  
 ATCTATGGCAGGCGCTCCTCAGACTCTTCCAGAAATCCAAGCTGTAGCTCATGGAGATAGTACTTTCA  
 GGAGCAAAGGCATGGTCGACAGCATTTTACCCTCAGCACTTGAAGAAACCATCCAGGAACTGCCTCTG  
 TTTCTCAGGTTGACTCCAAGATTGCCTGTTGGAAGACAAACCCGTGGCAGGAAGTGCAGCACTGGTCAG  
 AGTACTTGCTTTTCAGCCACAGGACTCCCCGGGGTCTTCGGGGTCTTCTTAGTGTCCAGCCTGTGTGAA  
 GGAAAGCTAGTTGCCCATGTGTGGATTCAAGTTCCCATCCCAAGCTGTGAGCACAGACACTGCAGGCAG  
 TACTGTCCAGGCAGGGGACACTGTGGTTCCCTAACCCCTGTGACTGATGCCCTGTTCTGTTCTTGTTC  
 GGAATTGAAGTCCTGGCAACTGAGAAGGACTCTCAGACACAGTTGCTGCCACTGAAAAGTGAAGTTA  
 GATCCTGAGCAACCTGGTAAATCTCAGGCATCTAATTTGAGAAAACGAGAAACCACAGCGTCTTCTAAAA  
 CAGTAGCAGCCAGGTGAGCACAGAATCAGCCTCGGAAAGAAGATCAGAAGAGAGCCTTCTGGGAAGTTG  
 GGTGAAGGGGCTATTGAGCAGGGGTGGTCTTTTATGCCAACCTGTGTTTGTCTCAGAGTAGAGCAGTA  
 AGTGACCTGCAACCTTCTGTTAAAGGAGCCAGTAATTTTATGATGGCTTTAAAACGAAAAGTATAAGCCGA  
 GGTCTAAAAGAATGTCCAGGAAAGCTAAGCACATGGAGGAAGTGTCTCCAAGAACAGCTCTCCACCATT  
 GAGCTGGACAGCTGCTCTGACCCAGGCTGCTGAGAACGCCACCTCAGCTCTGTTGAGGGAGCAGGAAGGC  
 TCACGTCCAGCTCCCCTCAGGCACAGATCTCTGGCAATGAAAGCGCCATCTCTCCAGCAAGCCGTGGAG  
 ATGCGGCTGAAGATCAGGTTTATAAGCTTCGGCTCAAACCTTCTTAAAAAATTAAGGCAAAAAAGAAGAA  
 ACTAGTGCCTCATTCTTCCCGCACCGTGAACCATCTCTAAGTGACCACTCAGAGCCTGCGTCCCAT  
 TGTGGAACACCTGCAAGTGACCACTCAGAGCCTGTATCCCATTTGGATCTCAAATGACTGTGAGTCCA  
 TAGAAGATCTGTTAAAAGAGCTACAGCATCAAATGACCTTGACAGACAGCAAATCTGGGTGCACCTCTGC  
 TCCTGATGCCACCTCAAATAACAGCCAGAGTCTGAGGAGATTTAGCAGAGTTGCTGTCGCTACAGCC  
 ATGTCAGAGCCCTCAGAAAGTGGGGAGCTTGGTTGAGGTAAGTGGAAATGGGGGACAGCACCCACAGCAC  
 AAGCACCTAGTGAATTCAGTGTGCTCCAGAACACATGTCTGAAACAGGACCATGATTACTGCAGCC  
 TGAGAAAAGGCCAGCGGGAAGTTGATCTGCATTACGTATGACAGTGCCTGTATAAGAACCCTTGAACCTTG  
 GGGAGTCCATGAAGACTGATATCTTTGATGATTTTTTTTCCACCTCAGCACTGAATTTCTTAACAAACG  
 ACACATTAGACATACCTCATTTTGTGACTCTCTGTTGAGAATTGC

ACGCGTACGCGGCCGCTCGAG – GFP Tag – GTTTAA

**Protein Sequence:**

>MG224848 representing NM\_001115149  
 Red=Cloning site Green=Tags(s)

MTDDSLKIGNLPLVPGTDPVGISSLPMLGYLGKNYASAKVTTDGHCPACRAKGLSALKPYRISFQESV  
 FLCEDLQCIYPLGSESLTNLISPDSEDCPTPSKPQKRKRLTNCRNSPLPVHSHKTRSHIVTDSEPIVNG  
 KYNGEVCCDFASFPDTSAHQDPASTAASVEQSEALEADDVVVAATEDPATVSVTSELEMPAKSRCLPLC  
 QTL CVQWKNTQALCWLDCILSALVHLEVLKRVLEACSREECVFGRLEFMYHQADELLHTHHLHGVTGED  
 CKKLTSEIFTEIDTCLNKVRDEIFAKLQPKLRCTLDGMEPVFALPVLLKLEPHVESLFTYSFSWNFECS  
 HCGHQYQNRVKS LVTFTNIIVPEWHPLNAAHFGPCNSCNSKSQIRKMLERASPIILMLHFVEGLPRRD LQ  
 HYAFHFEGSLYQVTSVIQYQANNHFITWFLDADGSWLECDLKGPCAKRHVTCEVPASETHIVIWERKSQ  
 VPIEEAACLPCMKNVQPVSGEEQTPALCSLAGTATSEPSVAHPTSMAGAPQTLPEIQAVAHGDSVLS  
 GAKGMVDSILPSALEETIQETASVSQVDSKDCLLEDKPVAGSAALVRVLA FQPQDSPGSSGSSLVSSLCE  
 GKLVAPCVDSFSPQAVSTDLQAVLSQAGDTVVPNPVTDAPVPVLVQELKSLATEKDSQTQLLPLKTEKL  
 DPEQPGKSQASNLKRETTASSKTVAARSAQNQPRKEDQKRA FVGSWVKGLLSRGGAFMPTCVLSQSRVAV  
 SDLQPSVKGASNFDGFKTKSISRRSKRMSRKAKHMEELSPRNSPPLSWTAAL TQAAENATSALLREQEG  
 SRPAPLRHRSPGNESAI SPASRGDAAEDQVHKLRLKLLKLLKAKKKKLAALISSPHREPSLSDHSEPA  
 SHCGSPNDCEI EDLLKELQHQIDLADSKSGCT SAPDATSNNSQSHEEILAE LLSPTA  
 MSEPSEGELELRYLEMGDSTPAQAPSEF SVVSQNTCLKQDHDYCSPEKQREVDLH SVMDSACIRTLNL  
 GSPMKTDIFDFFSTALNSLNTLDIPHFDDSLFENC

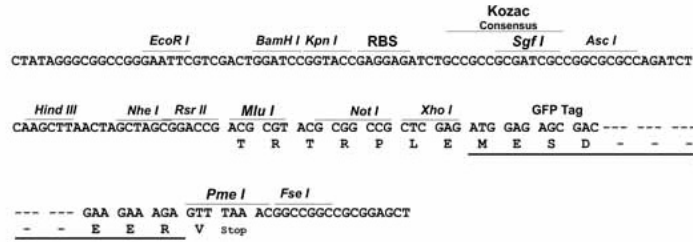
TRTRPLE – GFP Tag – V

**Restriction Sites:**

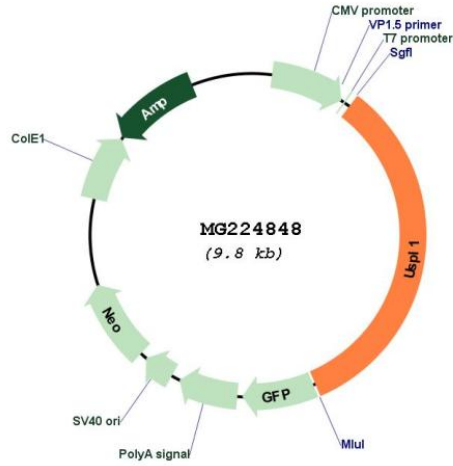
Sgfl-MluI

Cloning Scheme:

Cloning sites used for ORF Shutting:



Plasmid Map:



ACCN: NM\_001115149  
 ORF Size: 3267 bp

<b>OTI Disclaimer:</b>	<p>Due to the inherent nature of this plasmid, standard methods to replicate additional amounts of DNA in E. coli are highly likely to result in mutations and/or rearrangements. Therefore, OriGene does not guarantee the capability to replicate this plasmid DNA. Additional amounts of DNA can be purchased from OriGene with batch-specific, full-sequence verification at a reduced cost. Please contact our customer care team at <a href="mailto:custsupport@origene.com">custsupport@origene.com</a> or by calling 301.340.3188 option 3 for pricing and delivery.</p> <p>The molecular sequence of this clone aligns with the gene accession number as a point of reference only. However, individual transcript sequences of the same gene can differ through naturally occurring variations (e.g. polymorphisms), each with its own valid existence. This clone is substantially in agreement with the reference, but a complete review of all prevailing variants is recommended prior to use. <a href="#">More info</a></p>
<b>OTI Annotation:</b>	<p>This clone was engineered to express the complete ORF with an expression tag. Expression varies depending on the nature of the gene.</p>
<b>Components:</b>	<p>The ORF clone is ion-exchange column purified and shipped in a 2D barcoded Matrix tube containing 10ug of transfection-ready, dried plasmid DNA (reconstitute with 100 ul of water).</p>
<b>Reconstitution Method:</b>	<ol style="list-style-type: none"><li>1. Centrifuge at 5,000xg for 5min.</li><li>2. Carefully open the tube and add 100ul of sterile water to dissolve the DNA.</li><li>3. Close the tube and incubate for 10 minutes at room temperature.</li><li>4. Briefly vortex the tube and then do a quick spin (less than 5000xg) to concentrate the liquid at the bottom.</li><li>5. Store the suspended plasmid at -20°C. The DNA is stable for at least one year from date of shipping when stored at -20°C.</li></ol>
<b>RefSeq:</b>	<p><a href="#">NM_001115149.1</a>, <a href="#">NP_001108621.1</a></p>
<b>RefSeq Size:</b>	<p>3772 bp</p>
<b>RefSeq ORF:</b>	<p>3270 bp</p>
<b>Locus ID:</b>	<p>231915</p>
<b>UniProt ID:</b>	<p><a href="#">Q3ULM6</a></p>
<b>Cytogenetics:</b>	<p>5 G3</p>
<b>Gene Summary:</b>	<p>SUMO-specific isopeptidase involved in protein desumoylation. Specifically binds SUMO proteins with a higher affinity for SUMO2 and SUMO3 which it cleaves more efficiently. Also able to process full-length SUMO proteins to their mature forms (By similarity). Plays a key role in RNA polymerase-II-mediated snRNA transcription in the Cajal bodies (By similarity). Is a component of complexes that can bind to U snRNA genes (By similarity).[UniProtKB/Swiss-Prot Function]</p>