

## Product datasheet for **MG224839**

### Ssbp2 (NM\_024272) Mouse Tagged ORF Clone

#### Product data:

Product Type:	Expression Plasmids
Product Name:	Ssbp2 (NM_024272) Mouse Tagged ORF Clone
Tag:	TurboGFP
Symbol:	Ssbp2
Synonyms:	1500004K09Rik; 2310079I02Rik; 9330163K02Rik; A830008M03Rik; AU067692; AW558684; Hspc116
Mammalian Cell Selection:	Neomycin
Vector:	pCMV6-AC-GFP (PS100010)
E. coli Selection:	Ampicillin (100 ug/mL)
ORF Nucleotide Sequence:	>MG224839 representing NM_024272 Red=Cloning site Blue=ORF Green=Tags(s)

TTTTGTAATACGACTCACTATAGGGCGGCCGGAATTCGTCGACTGGATCCGGTACCGAGGAGATCTGCC  
GCC**GCGATCGCC**

ATGTACGGCAAAGGCAAGAGTAACAGCAGCGCCGTCCCGTCCGACAGCCAGGCCCGGAGAAGTTAGCAC  
TCTACGTGTATGAATATCTGCTCCATGTAGGAGCTCAGAAATCGGCTCAGACATTTTTATCAGAGATAAG  
ATGGGAAAAAACATCACATTGGGGGAGCCGCCGGATTCTTACATTCTTGGTGGTGTGTATTTGGGAT  
CTCTACTGTGCAGCTCCAGAGAGACGGGAAACCTGTGAACACTCGAGCGAAGCTAAAGCCTTCCATGATT  
ATAGTGTGCAGCAGCTCCAGCCCCGTGCTAGGAAACATGCCCCAGGAGATGGCATGCCAGTAGGTCC  
CGTGCCACCAGGGTTCTTTCAGCCTTTTATGTCGCCTCGGTACCCTGGCGGCCGAGGCCCCATTGAGG  
ATACCTAACCAGGCACTTGGAGGTGTCCAGGAAGTCAGCCATTACTCCCAGTGAATGGATCCAACAC  
GACAACAAGGACATCAAATATGGGTGGACCAATGCAGAGAATGACTCCCCAAGAGGAATGGTGCCCTT  
AGGACCACAGAATATGGAGGTGCAATGAGACCCCACTGAATGCTTTAGGTGGCCCTGGAATGCCTGGA  
ATGAACATGGGTCCAGGTGGTGGTAGACCTTGCCAAACCAACAAATGCGAATTCATACCTACTCCT  
CAGCGTCTCTGGGAATTACGTAGGTCTCCGGGAGGTGGAGGACCACCAGGAACACCCATCATGCCTAG  
TCCAGCAGATTCAACTAATTCTGGAGACAACATGTATACTTTAATGAATGCAGTACCTCTGGGCCTAAC  
AGACCTAATTTCCAATGGGCCCTGGATCAGATGGTCCATGGGTGGATTAGGAGGAATGGAGTCCCATC  
ACATGAACGGCTCTTAGGCTCAGGAGATATGGACAGTATTTCCAAGAATTCTCCAATAATATGAGCCT  
GAGTAACCAGCCGGGCACTCCAAGGGATGACGGTGAATGGGGGAAATTTCTTAATCCTTTTCAGAGT  
GAGAGTTACTCCCCAGCATGACCATGAGCGTG

**ACGCGT**ACGCGGCCGCTCGAG - GFP Tag - GTTTAA



[View online »](#)

**Protein Sequence:** >MG224839 representing NM\_024272  
 Red=Cloning site Green=Tags(s)

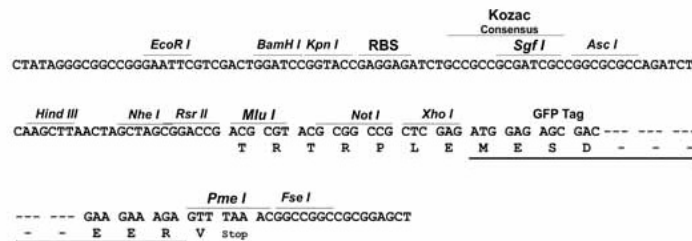
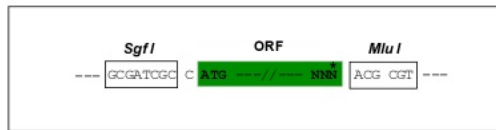
MYGKGSNSSAVPSDSQAREKLALYVVEYLLHVGAQKSAQTFLSEIRWEKNITLGEPPGFLHSWVCVFD  
 LYCAAPERRETCEHSSEAKAFHDYSAAAAPSPVLGNMPPGDGMPVGPVPPGFFQPFMSPRYPGGPRPPLR  
 IPNQALGGVPGSQPLLP SGM DPT RQQGHPNMGGPMQRMT PPRGMVPLGPQNYGGAMRPLNALGGPGMPG  
 MNMGPGGGRPWPNPTNANSIPYSSASPGNYVGGPPGGGGPPGTPIMPSPADSTNSGDNMYTLMNAVPPGPN  
 RPNFPMGPGSDGPMGGLGGMESHMNGSLGSGDMDSISKNSPNNMSLSNQPGTPRDDGEMGNGFLNPFQS  
 ESYSPSMTMSV

TRTRPLE - GFP Tag - V

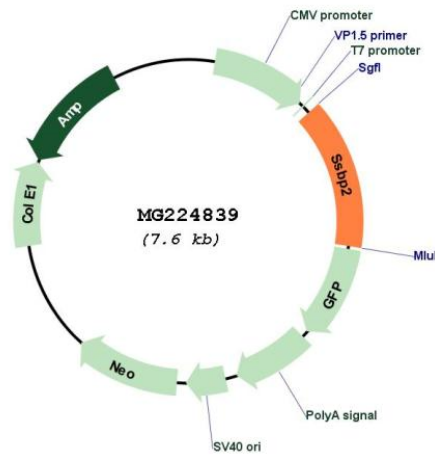
**Restriction Sites:** SgfI-MluI

**Cloning Scheme:**

Cloning sites used for ORF Shutting:



**Plasmid Map:**



**ACCN:** NM\_024272

<b>ORF Size:</b>	1083 bp
<b>OTI Disclaimer:</b>	The molecular sequence of this clone aligns with the gene accession number as a point of reference only. However, individual transcript sequences of the same gene can differ through naturally occurring variations (e.g. polymorphisms), each with its own valid existence. This clone is substantially in agreement with the reference, but a complete review of all prevailing variants is recommended prior to use. <a href="#">More info</a>
<b>OTI Annotation:</b>	This clone was engineered to express the complete ORF with an expression tag. Expression varies depending on the nature of the gene.
<b>Components:</b>	The ORF clone is ion-exchange column purified and shipped in a 2D barcoded Matrix tube containing 10ug of transfection-ready, dried plasmid DNA (reconstitute with 100 ul of water).
<b>Reconstitution Method:</b>	<ol style="list-style-type: none"><li>1. Centrifuge at 5,000xg for 5min.</li><li>2. Carefully open the tube and add 100ul of sterile water to dissolve the DNA.</li><li>3. Close the tube and incubate for 10 minutes at room temperature.</li><li>4. Briefly vortex the tube and then do a quick spin (less than 5000xg) to concentrate the liquid at the bottom.</li><li>5. Store the suspended plasmid at -20°C. The DNA is stable for at least one year from date of shipping when stored at -20°C.</li></ol>
<b>RefSeq:</b>	<a href="#">NM_024272.4</a> , <a href="#">NP_077234.2</a>
<b>RefSeq Size:</b>	6656 bp
<b>RefSeq ORF:</b>	1086 bp
<b>Locus ID:</b>	66970
<b>UniProt ID:</b>	<a href="#">Q9CYZ8</a>
<b>Cytogenetics:</b>	13 C3