

## Product datasheet for **MG224816**

### Picalm (NM\_146194) Mouse Tagged ORF Clone

#### Product data:

Product Type:	Expression Plasmids
Product Name:	Picalm (NM_146194) Mouse Tagged ORF Clone
Tag:	TurboGFP
Symbol:	Picalm
Synonyms:	CALM; CLTH; fit-1; fit1; mKIAA4114; PAP180
Mammalian Cell Selection:	Neomycin
Vector:	pCMV6-AC-GFP (PS100010)
E. coli Selection:	Ampicillin (100 ug/mL)



[View online »](#)

ORF Nucleotide  
Sequence:

>MG224816 representing NM\_146194  
Red=Cloning site Blue=ORF Green=Tags(s)

TTTTGTAATACGACTCACTATAGGGCGGCCGGAATTCGTCGACTGGATCCGGTACCGAGGAGATCTGCC  
GCCGCGATCGCC

ATGTCTGGCCAGAGCCTGACGGACCGAATCACCGCGCCAGCACAGTGTCACTGGTCCGCGGTATCTA  
AGACAGTATGCAAGGCCACGACCCACGAGATCATGGGCCCAAGAAAAAGCACCTGGACTACTTAATTCA  
GTGTACAATGAGATGAATGTGAACATCCACAGTTGGCGGACAGTTTGTGGAAAGAACTACTAACAGT  
AGTTGGGTGGTGGTCTTCAAATCACTCATTACAACATCATTTTGGTGTATGGAAATGAGCGTTTCA  
TTCAGTATTTGGCTTCAAGAAACACATTGTTAACTTAAGCAATTTTTGGATAAAAGTGGATTGCAAGG  
ATATGATATGTCTACATTTATTAGACGGTATAGTAGACTTAAATGAAAAAGCAGTTTCATACAGACAA  
GTTGCATTGATTTCAAAAAGTGAAGAGAGGAGCTGATGGAGTTATGAGAACAATGAACACAGAAAAAC  
TCTAAAAACTGTACCAATTATCCAAAATCAAATGGATGCACTTCTTGATTTTAAATGTTAATAGTAATGA  
ACTTACAATGGGGTAATAAATGCTGCCTTCATGCTCCTTCAAAGATGCCATTAGACTATTTGCAGCA  
TACAATGAAGGAATTATTAATTTATTGGAAAAATATTTTGATATGAAAAAGAACCAGTGCAAAGAAGGTC  
TTGACATCTATAAGAAGTTTCTGACTAGGATGACAAGAATCTCAGAGTTTCTGAAAGTTGACAGCAAGT  
TGGAAATGACAGAGGAGATATCCAGATCTTTCACAGGCCCCAGCAGTCTTCTTGATGCTTTAGAACA  
CATTTAGCTTCTTGGAAAGGAAAGAAAACAAAGATCCACAGCTGCAAGCAGGGCTACAACACTTTCCA  
ATGCAGTCTCTTCTTGGCAAGCACTGGCCTATCTCTGACCAAAGTGGATGAAAGGGAAAAACAGGCAGC  
ATTAGAGGAAGAACAGGCTCGTTTAAAAGCATTAAAGGAACAGCGTCTAAAAGAAGTTCGAAAGAAACCG  
CATACCTCTCTAACAACGACGCTCTCCGGTGTCCACCTCAGCAGGGGAATAATGACTGCACCAGCCA  
TTGACATATTTTCTACCCCTAGTTCTTCTAACAGCACATCTAAGCTGCCAATGACCTGCTTGACTTGCA  
GCAGCCAACTTTACCCGCTGTGCCACGCCATGTCGGCTGCTCCTCAGGGAGCGAGTACATGGGGAGAT  
CCTTCTCTGCTACTCTAGATGCTGTTGAGGATGCCATTCCAAGCTTAAACCCTTCTCACA AAAAGTA  
GTGGTGTATGTTCACTGCCATTGCTTCCAGATGTATCCACTTTTACTACTAGGACACCTACTCATGAGAT  
GTTTGTGGATTGAGTCTTCTCCAGTTGCACAGCCACATTCTCAGCTGGCCTTAATGTTGACTTTGAA  
TCTGTGTTGGAAATAAATCTACGAATGTTGCTGTAGATTCTGGTGGCTTTGATGAACTAGGTGGACTTC  
TCAAACCAACAGTGGCCTCCAGAACCAGAGTCTTCTGTTGCCAACTCCGCCTAACAAATTAGTGTC  
TGACGACTTGATTATCTTTAGCCAACCTTGTGGCAATCTTGGCATTGAAATGGAACCACTAAGAAT  
GATGTAAGTTGGAGTCAACCAGGTGAAAAGAAGTTAACTGGAGGATCTAACTGGCAACCAAGGTTGCAC  
CAACAACCTGCCTGGAGCGCTGCAACAATGAATGGCATGCATTTTCCACAATACGCGCCCCCTGTAATGGC  
CTATCCTGCTACTACCAACGGGCATGATAGGATATGGAATTCCTCCTCAGATGGGAAGTGACCTGTA  
ATGACACAACCAACCTTAATATACAGCCAGCCTGTGATGAGACCACCAACCCCTTTGGCCCTGTATCAG  
GAGCACAGATACAGTTTATG

ACGCGTACGCGGCCGCTCGAG - GFP Tag - GTTTAA

**Protein Sequence:** >MG224816 representing NM\_146194  
 Red=Cloning site Green=Tags(s)

```

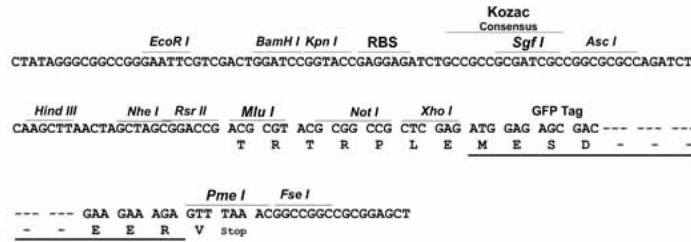
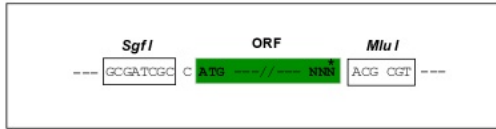
MSGQSLTDRITAAQHSVTGSAVSKTVCKATTHEIMGPKKKHLDYLIQCTNEMNVNIPQLADSLFERTTNS
SWVVVFKSLITTHHLMVYGNERFIQYLASRNTLFNLSNFLDKSGLQGYDMSTFIRRYSRYLNEKAVSYRQ
VAFDFTKVKRGADGVMRTMTEKLLKTVPPIIQNQMDALLDFNVNSNELTNGVINAAMFLFKDAIRLFAA
YNEGIINLLEKYFDMKKNQCKEGLDIYKKFLTRMTRISEFLKVAEQVGI DRGDIPDLSQAPSSLLDALEQ
HLASLEGKKIKDSTAASRATTL SNAVSSLASTGLSLTKVDEREQAALEEEQARLKALKEQRLKELAKKP
HTSLTTAASPVSTSAGGIMTAPAIIDIFSTPSSNSTSKLPNDLLDLQPTTFHPSVHMSAAPQGASTWGD
PFSATLDAVEDAIPSLNPF LTKSSGDVHLP IASDVSTFTTRTPTHEMFVGFSPSPVAQPHSSAGLNVD FE
SVFGNKSTNVAVDSGGFDELGGLLKPTVASQNQSLPVAKLPPNKLVSDDL DSSLANLVGNLGI GNGTTKN
DVSWSQPGEKKLTGGSNWQPKVAPTTAWSAATMNGMHFPQYAPPVMAYPATTP TGMIGYGI PPQMGSVPV
MTQPTLIYSQPVMRPPNPF GPVSGAQIQFM
    
```

TRTRPLE - GFP Tag - V

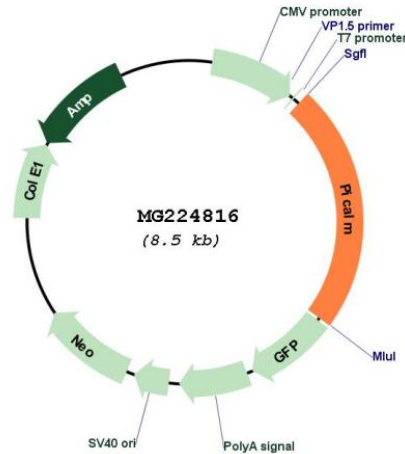
**Restriction Sites:** SgfI-MluI

**Cloning Scheme:**

Cloning sites used for ORF Shuttling:



Plasmid Map:



ACCN: NM\_146194

ORF Size: 1980 bp

**OTI Disclaimer:** Due to the inherent nature of this plasmid, standard methods to replicate additional amounts of DNA in E. coli are highly likely to result in mutations and/or rearrangements. Therefore, OriGene does not guarantee the capability to replicate this plasmid DNA. Additional amounts of DNA can be purchased from OriGene with batch-specific, full-sequence verification at a reduced cost. Please contact our customer care team at [custsupport@origene.com](mailto:custsupport@origene.com) or by calling 301.340.3188 option 3 for pricing and delivery.

The molecular sequence of this clone aligns with the gene accession number as a point of reference only. However, individual transcript sequences of the same gene can differ through naturally occurring variations (e.g. polymorphisms), each with its own valid existence. This clone is substantially in agreement with the reference, but a complete review of all prevailing variants is recommended prior to use. [More info](#)

**OTI Annotation:** This clone was engineered to express the complete ORF with an expression tag. Expression varies depending on the nature of the gene.

**Components:** The ORF clone is ion-exchange column purified and shipped in a 2D barcoded Matrix tube containing 10ug of transfection-ready, dried plasmid DNA (reconstitute with 100 ul of water).

**Reconstitution Method:**

1. Centrifuge at 5,000xg for 5min.
2. Carefully open the tube and add 100ul of sterile water to dissolve the DNA.
3. Close the tube and incubate for 10 minutes at room temperature.
4. Briefly vortex the tube and then do a quick spin (less than 5000xg) to concentrate the liquid at the bottom.
5. Store the suspended plasmid at -20°C. The DNA is stable for at least one year from date of shipping when stored at -20°C.

**RefSeq:** [NM\\_146194.5](#)

**RefSeq Size:** 3659 bp

**RefSeq ORF:** 1983 bp

**Locus ID:** 233489

**UniProt ID:** [Q7M6Y3](#)

**Cytogenetics:** 7 50.47 cM

**Gene Summary:** Cytoplasmic adapter protein that plays a critical role in clathrin-mediated endocytosis which is important in processes such as internalization of cell receptors, synaptic transmission or removal of apoptotic cells. Recruits AP-2 and attaches clathrin triskelions to the cytoplasmic side of plasma membrane leading to clathrin-coated vesicles (CCVs) assembly. Furthermore, regulates clathrin-coated vesicle size and maturation by directly sensing and driving membrane curvature. In addition to binding to clathrin, mediates the endocytosis of small R-SNARES (Soluble NSF Attachment Protein REceptors) between plasma membranes and endosomes including VAMP2, VAMP3, VAMP4, VAMP7 or VAMP8. In turn, PICALM-dependent SNARE endocytosis is required for the formation and maturation of autophagic precursors. Modulates thereby autophagy and the turnover of autophagy substrates such as MAPT/TAU or amyloid precursor protein cleaved C-terminal fragment (APP-CTF).[UniProtKB/Swiss-Prot Function]