

Product datasheet for **MG224812**

Ubtf (NM_001044383) Mouse Tagged ORF Clone

Product data:

Product Type:	Expression Plasmids
Product Name:	Ubtf (NM_001044383) Mouse Tagged ORF Clone
Tag:	TurboGFP
Symbol:	Ubtf
Synonyms:	A930005G04Rik; NOR-90; Tcfubf; UBF; UBF-1; UBF1
Mammalian Cell Selection:	Neomycin
Vector:	pCMV6-AC-GFP (PS100010)
E. coli Selection:	Ampicillin (100 ug/mL)



[View online »](#)

**ORF Nucleotide
Sequence:**

>MG224812 representing NM_001044383
 Red=Cloning site Blue=ORF Green=Tags(s)

TTTTGTAATACGACTCACTATAGGGCGGCCGGAATTCGTCGACTGGATCCGGTACCGAGGAGATCTGCC
 GCC**CGGATCGCC**

ATGAACGGAGAAGCGGACTGTCCCACAGACCTGGAATGGCCGCCCCAAAGGCCAAGACCCTGGTCCC
 AGGAAGATATGCTGACTCTGCTGGAATGCATGAAGAACAACCTCCCATCCAACGACAGCTCCAAGTTCAA
 AACACAGAGTCGCACATGGATTGGGAAAAAGTTGCGTTTAAAGATTTTTCAGGAGATATGTGCAAGCTC
 AAATGGGTGGAGATTTCTAACGAGGTAAGGAAGTCCGTACATTGACAGAATTGATCCTTGATGCTCAGG
 AACATGTTAAAAACCTTACAAAGGCCAAAAAGCTCAAGAAACACCCGGATTTTCCAAAGAAACCTCTCAC
 CCCTTACTTCGCTTCTCATGGAGAAGCGGGCAAGTACGCGAAGCTCCACCCGGAGATGAGCAACCTG
 GACCTGACTAAGATCCTGTCTAAGAAATACAAGGAAGTCCAGAGAAGAAGAAGATGAAATATATTCAGG
 ACTTCCAGAGGGAGAAACAGGAGTTCGAGCGAAACCTGGCCCGATTCCAGGGAGGATCACCTGACCTTAT
 CCAGAATGCCAAGAAGTCGGACATCCCCGAGAAACCCAAACTCCCAGCAACTGTGGTACACCCACGAG
 AAGAAGGTGTATCTCAAAGTGGCCCGGATGAGATTATGCGGGACTATATCCAGAAGCACCTGAGCTGA
 ACATCAGTGAGGAAGGCATCACCAAGTCCACCCTCACCAAGGCCGAGCGCCAGCTCAAGGACAAGTTCGA
 TGGGCGACCTACCAAGCCGCTCCGAACAGCTACTCCCTGTACTGTGCGGAGCTCATGGCCAACATGAAG
 GATGTGCCCAGCAGAGCGCATGGTGCTATGCAGCCAGCAATGGAAGCTGCTCTCTCAGAAGGAGAAGG
 ATGCCTATCACAAGAAATGTGACCAGAAAAAGAAAGATTATGAGGTAGAGCTGCTGCGGTTCTTTGAGAG
 CTTGCCGAGGAAGAGCAGCAGCGGGTTCTGGGGGAGGAGAAGATGCTGAACATCAATAAGAAGCAAACC
 ACCAGTCCGGCCTCCAAGAAGCCTTACAGGAAGGTGGCAAGGGTGGCTCCGAGAAGCCCAAGCGGCCTG
 TGCTGCTATGTTTCATCTTCTCTGAGGAGAAGCGAAGGCAGCTACAGGAGGAACGACCTGAGCTCTCCGA
 AAGCGAACTGACCCGCTTCTGGCCCGCATGTGGAACGACTTGTCCGAGAAGAAGAAGGCTAAATACAAG
 GCCCGGAGGCTGCGCTGAAGGCGCAGTCTGAGAGGAAGCCGGGCGGGAGCGTGAAGATAGGGGCAAGC
 TGCCGGAGTCGCCAAGAGGGCTGAGGAGATCTGGCAGCAGAGTGTATCGGAGACTATCTGGCCCGCTT
 CAAGAATGACCGGTGAAAGCCTTGAAAGCCATGGAGATGACTTGAACAACATGGAGAAGAAGGAGAAG
 CTGATGTGGATTAAGAAGGCAGCAGAAGACCAAAAACGATATGAGAGAGAGTTAAGTGAAGTGGGGCCC
 CTCCAGCTGCTACAACTCTTCCAAGAAGATGAAGTTCAGGGAGAACCAAGAAACCTCCTATGAACGG
 TTACCAGAAGTTCTCCAGGAGCTGCTGTCCAATGGGGAGCTAAATCACCTGCCGCTGAAGGAGCGCATG
 GTGGAGATTGGCAGCCGCTGGCAGCGCATCTCCAGAGCCAGAAGGAGCACTATAAGAAGCTGGCGGAGG
 AGCAACAGAGGCAGTACAAGGTGCACTTGGACCTCTGGGTCAAGAGCCTGTCTCCCAGGACCGCGCAGC
 ATACAAAGAATACATCTCCAATAAAGCTAAGAACATGACCAAGCTCCGAGGCCAAACCCCAAGTCTAGC
 CGGACCACCTGCAGTCCAAGTCGGAGTCCGAGGAGGATGACGATGAGGAGGAGGAGGACGAGGAGG
 AGGAGGAAGAGGAAGATGATGAGAACGGTACTCTTCTGAGGATGGCGGGGACTCTTCTGAGTCCAGCAG
 TGAAGATGAAAGCGAGGATGGGGATGAGAATGATGATGACGACGACGATGAAGATGACGAAGATGACGAC
 GATGAGGATGAAGACAACGAGTCTGAGGGCAGTAGCTCCAGCTCTTATCCTCAGGGGACTCTTCGGATT
 CTGACTCCAAC

ACGCGTACGCGGCCGCTCGAG – GFP Tag – GTTTAA

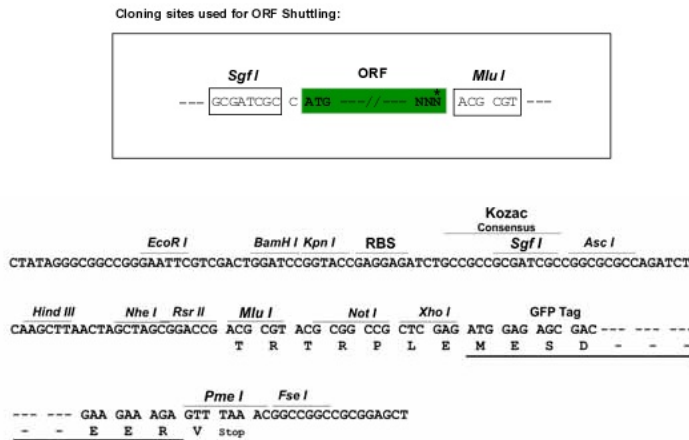
Protein Sequence: >MG224812 representing NM_001044383
 Red=Cloning site Green=Tags(s)

```
MNGEADCPTDLEMAAPKGQDRWSQEDMLTLLCEMKNLPSNDSSKFKTTESHMDWEKVAFKDFSGDMCKL
KWVEISNEVRKFRRTLTELILDAQEHVKNPYKGGKLLKKHPDFPKKPLTPYFRFFMEKRKAYAKLHPMSNL
DLTKILSKKYKELPEKKMKYIQDFQREKQEFERNLARFREDHPDLIQNAKSDIPEKPKTPQQLWYTHE
KKVYLKVRPDEIMRDYIQKHPNELNISEEGITKSTLTKAERQLKDKFDGRPTKPPNSYSLYCAELMANMK
DVPSTERMVLCSQQWKLKLSQKEKDAYHKKCDQKKDYEVLLRFLESLPEEEQQRVLGEEKMLNINKKQT
TSPASKKPSQEGGKGGSEKPRPVSA MFIFSEEKRRQLQEERPELSESELTRLLARMWNDLSEKKKAKYK
AREAALKAQSERKPGGEREDRGKLPESPKRAEEIWQQSVIGDYLARFKNDRVKALKAMEMTWNMEKKEK
LMWIKKAAEDQKRYERELSEMRAPPAATNSSKKMKFQGEPPKPPMNGYQKFSQELLNGLNHLPLKERM
VEIGSRWQRISQSQKEHYKLAEEQQRQYKVLHDLVWKSLSPODRAAYKEYISNKRNMTKLRGPNPKSS
RTTLQSKSESEDDDEEEEDDEEEEDDENGDSSEDDGGDSSESSSEDESEDDGENDDDDDDEDDDD
DEDEDNESEGSSSSSSSSGSDSDSN
```

TRTRPLE - GFP Tag - V

Restriction Sites: SgfI-MluI

Cloning Scheme:



ACCN: NM_001044383

ORF Size: 2181 bp

OTI Disclaimer: Due to the inherent nature of this plasmid, standard methods to replicate additional amounts of DNA in E. coli are highly likely to result in mutations and/or rearrangements. Therefore, OriGene does not guarantee the capability to replicate this plasmid DNA. Additional amounts of DNA can be purchased from OriGene with batch-specific, full-sequence verification at a reduced cost. Please contact our customer care team at custsupport@origene.com or by calling 301.340.3188 option 3 for pricing and delivery.

The molecular sequence of this clone aligns with the gene accession number as a point of reference only. However, individual transcript sequences of the same gene can differ through naturally occurring variations (e.g. polymorphisms), each with its own valid existence. This clone is substantially in agreement with the reference, but a complete review of all prevailing variants is recommended prior to use. [More info](#)

OTI Annotation: This clone was engineered to express the complete ORF with an expression tag. Expression varies depending on the nature of the gene.

Components: The ORF clone is ion-exchange column purified and shipped in a 2D barcoded Matrix tube containing 10ug of transfection-ready, dried plasmid DNA (reconstitute with 100 ul of water).

Reconstitution Method:

1. Centrifuge at 5,000xg for 5min.
2. Carefully open the tube and add 100ul of sterile water to dissolve the DNA.
3. Close the tube and incubate for 10 minutes at room temperature.
4. Briefly vortex the tube and then do a quick spin (less than 5000xg) to concentrate the liquid at the bottom.
5. Store the suspended plasmid at -20°C. The DNA is stable for at least one year from date of shipping when stored at -20°C.

RefSeq: [NM_001044383.3](#)

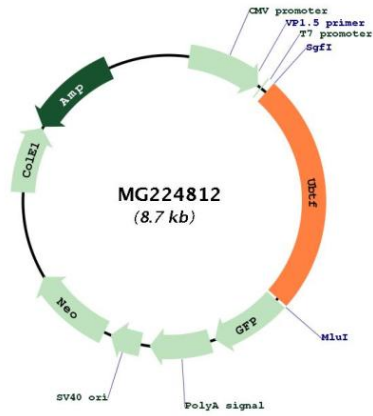
RefSeq Size: 4458 bp

RefSeq ORF: 2184 bp

Locus ID: 21429

Cytogenetics: 11 D

Product images:



Circular map for MG224812