

Product datasheet for **MG224811**

Zfr (NM_011767) Mouse Tagged ORF Clone

Product data:

Product Type:	Expression Plasmids
Product Name:	Zfr (NM_011767) Mouse Tagged ORF Clone
Tag:	TurboGFP
Symbol:	Zfr
Synonyms:	C920030H05Rik
Mammalian Cell Selection:	Neomycin
Vector:	pCMV6-AC-GFP (PS100010)
E. coli Selection:	Ampicillin (100 ug/mL)
ORF Nucleotide Sequence:	>MG224811 representing NM_011767, codon optimized . Due to the complexity of NM_011767, the ORF clone is codon optimized for mammalian Expression. The nucleotide sequence differs from the reference sequence, yet the amino acid sequence remains identical.

Red=Cloning site Blue=ORF Green=Tags(s)

TTTTGTAATACGACTCACTATAGGGCGGCCGGGAATTCGTCGACTGGATCCGGTACCGAGGAGATCTGCC
GCC**CGATCGCC**

ATGATCCCTATCTGTCCTGTAGTCTCTTTACTTACGTGCCTAGTAGGCTCGGAGAGGACGCCAAAATGG
CCACTGGCAACTACTTCCGATTTACTCACTCTGGGGCCGCCGCCGAGCTGCTGTGCGCAATATCCCA
GCAGCCAGCTAGCGGGTGGCCTATAGTCACCCTACTACTGTAGCCTCATATACTGTGCATCAAGCTCCA
GTGGCCGCCACACTGTGACAGCTGCTTATGCTCCTGCCGCCGTACCGTCGCGTAGCGAGACCCGCTC
CAGTCGCAGTAGCAGCAGCAGCGACTGCCGAGCTTACGGGGTTATCCAACCGCCATACAGCCACAGA
TTATGGTTACTCAGAGACAGCAGGAGGCTCCCCCCCACCACCAGCCACGACCCAGAATTACCAG
GACTCTTATTCATACGTCCGGTCAACCGCACCAGCTGTAGCTTACGATTCAAACAGTATTATCAGCAGC
CTACAGCAACCGCAGCCGCGTGGCCGCTGCAGCTCAACCTCAGCCAGTGTGGCCGAAACTTACTATCA
AACTGCACCCAAGGCAGGATATTCCAGGGCGCCACCAGTATACTCAAGCCAGCAAGCTAGACAAGTT
ACCGCCATAAAGCCTGCTACACCTAGTCCGGCTACTACCACATTCTAACTACCCAGTCTCCAGTACCG
TCCAGCCTGTGGCCGAGCAGCAACCGTTGTGCCAGCTACACACAATCTGCTACATATTCTACTACCGC
TGTGACATATAGTGGACCTCTTATCCGGCTACGAGGCGCCGTGTATAGTGCAGCATCCTCCTACTAT
CAGCAGCAACAGCAACAGCAGAAACAGGCTGCAGCAGCCGCTGCCGAGCCGAGCCACTGCGGCCTGGA
CCGGAACAACCTTCACTAAGAAGACCCCTCCAGAACAAGCAGTTGAAACAAAACAGCCTCCTAAGCC
ACCCAGATCCACTACTGCGATGTTTGAAGATTTTCATGCGCTGGCCCGAGACTATAAGGAACACCTG
GAAGGCGAGAAGCACAAGAAGAAAGAGGAGCTCTGAAGGCTTCCAGAACACCTTCTCCAACAACCT



[View online »](#)

CAACGCGCGGGACTCAGAACCAGCTTAGGTGTGAACTCTGCGACGTGAGCTGCACCGGAGCTGATGCATA
TGCCGCTCACATCAGGGCGCGAAGCACCAGAAGTGGTCAAGCTCCATACGAAGCTGGCAAACCAATT
CCCTCTACAGAACC GAATGTGGTCTCACAGGCTACTAGCAGCACAGCTGCCTCTGCTTCAAAACCTACGG
CTTCACCATCAAGTATCGGCGCAAGCAATTGCACTCTCAACACCAGCTCCATTGCCACGTCTAGTGTTAA
GGGTTTGTCTACGACAGGCAATTCATCCCTCAACTCAACCAGTAACACTAAGGTGAGCGCTATACCCACA
AACATGGCAGCTAAGAAGACCTCCACTCCTAAGATAAACTTTGTCGGCGGAAACAAGCTGCAGAGTACAG
GTATAAGACAGAGGACCTGAAGGCATCGACTGCGTCAAAAACACACCTGCGGCAAGCGCAGTGCAGAT
TCCAGAGGTCAAGCAAGATGCAGGATCAGAGCCTGTACCCTGCCTCCCTCGCAGCGCTTCAGAGCGAC
GTCCAACCAGTCCGGTACGACTACGTGGAAGAGGTTAGAAAACGATGAGGGGAAGGTTATTGCTTTTCATT
GCAAGCTTTGCGAATGTAGTTTTAACGATCCAAACGCAAAGGAGATGCACCTGAAGGGTTCGGCGGCACAG
GCTGCAGTATAAGAAAAAGTGAACCCAGACCTCCAGGTGGAAGTTAAGCCGTC AATTTCGAGCACGGAAA
ATTCAGAAGAAAAGATGAGAAAAGCAAATGCAGAAAGAGGAGTACTGGAGAAGACGAGAGGAGGAAGAGC
GATGGCGGATGGAGATCCGGCGTACGAAGAGGACATGTATTGGCGGCAATGGAAGAAGAACAGCACCA
TTGGGACGACAGGCGCAGAATGCCTGATGGGGGTACCCACACGGGCCCGCAGGCCCGCTCGGACTTCTC
GGCGTCAGACCAGGAATGCCACCTCAACCACAAGGCCAGCACCTCTCAGAAGACCAGACTCAAGTGATG
ATCGGTATGTCATGACCAAACATGCTACCATATACCCAACAGAAGAAGAGTTGCAGGCAGTCCAGAAAAT
AGTGTCTATCACAGAGCGGGCCCTGAAGCTGGTTTCAGACTCCCTGAGTGAGCACGAAAAGAGTAAAAAC
AAGAAGGGGATGATAAAAAGGAGGGCGGCAAAGACCGAGCCCTGAAAGGGGTTCTTCGGTTGGCGTCC
TGGCAAAGGGACTCCTGCTCCGCGGCGACAGAAACGTGAATCTCGTTCTTCTTTGTAGCGAGAAACCTTC
TAAAAGTCTGTTGTCTAGAATTGCCGAAAACCTCCCAAAGCAGCTCGCAGTCATTAGCCAGAAAAATAT
GATATTAAGTGC GCGTTAGCGAGGCGGCCATCATCCTGAACTCCTGTGTGGAGCCAAAAATGCAAGTCA
CAATAACTCTGACCTACCAATTATCCGCGAAGAGAATATGAGGGAAGGGCAGCTCACCAGTGGCATGGT
AAAGGACCCACCCGACGTGCTGGACAGGCAGAAGTGTCTCGATGCCCTGGCCGCGCTTAGGCACGCCAAA
TGGTTTCAGGCCAGAGCAAACGGCCTGCAGTCTTGCGTGATCATCATCAGAATCCTGCGGGACCTGTGCC
AGCGAGTCCCCACTTGGTCTGATTTCCCTAGCTGGGCTATGGAGCTGCTGGTTGAAAAGGCTATCAGTTC
AGCAAGCAGCCCTCAGTCTCCCGGCGATGCGCTGAGGAGGGTGTGGAGTGCATCAGCAGCGCATTATT
TTGAAGGGTAGCCCCGCGCTGCTGGACCCATGTGAGAAGGACCCCTTCGATACACTGGCAACGATGACAG
ATCAGCAGAGGGAAGACATTACTAGCTCTGCCAGTTCGCTCTGCGCCTCTTGGCATT CAGGCAGATCCA
CAAAGTACTTGGCATGGACCCTTTCCTCAGATGAATCAGAGATTCAACATTCATAACAATAGAAAAGAGG
CGCAGGGACTCTGACGGAGTCGATGGGTTTGAGGCTGAAGGAAAAAGGATAAAAAGGATTACGATAACT
TC

ACGCGTACGCGGCCGCTCGAG – GFP Tag – GTTTAA

Protein Sequence: >MG224811 representing NM_011767
Red=Cloning site Green=Tags(s)

```

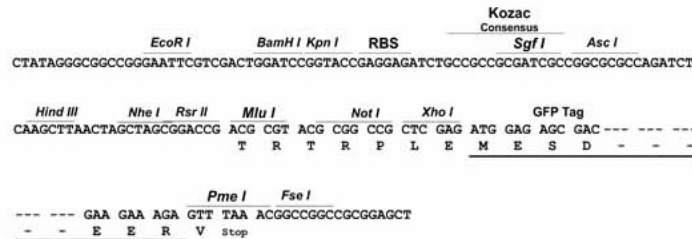
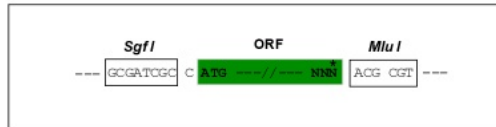
MIPICPVVSFTYVPSRLGEDAKMATGNYFGFTHSGAAAAAAQYSQQPASGVAYSHPTTVASYTVHQAP
VAAHTVTAAYAPAAATVAVARPAPVAVAAAAATAAYGGYPTAHTATDYGYTORQQEAPPPPPATTQNYQ
DSYSYVRSTAPAVAYDSKQYYQQPTATAAAVAAAAQPPSVAETYYQTAPKAGYSQGATQYTAQQARQV
TAIKPATPSPATTTFSIYPVSSTVQPVAAAATVVPSTYQSATYSTTAVTYSGTSYSGYEAAYSAASSYY
QQQQQQKQAAAAAAAAATAAWTGTTFTKKTFFQNKQLKPKQPPKPPQIHYCDVCKISCAGPQTYKEHL
EQQKHKKKAALKASQNTSSSNSTRGTQNLRCCLDVSTGADAYAAHIRGAKHQKVKVHLHTKLGKPI
PSTEPNVVSQATSSTAASASKPTASPSSIGASNCTLNTSSIATSSVKGLSTTGNSSLNSTNTKVSIAIPT
NMAAKKTSTPKINFVGGNKLQSTGNKTEDLKGIDCVKNTPAASAVQIPEVKQDAGSEPVTPASLAALQSD
VQPVGHDYVEEVRNDEGVIRFHCKLCECSFNPNKEMHLKGRRHRLQYKKNVNDLQVEVKPSIRARK
IQEEKMRKQMQKEEYWRREEEERWRMEIRRYEEDMYWRRMEEQHHWDDRRRMPDGGYPHGGPGLLL
GVRPGMPPQPQPAPLRRPDSSDDRYVMTKHAT IYPTEEELQAVQKIVSITERALKLVSDSLSEHEKSKN
KEGDDKKEGGKDRALKGVLRVGLAKGLLLRGDRNVNLVLLCSEKPSKSLLSRIAENLPKQLAVISPEKY
DIKCAVSEAAIILNSCVPEKMQVTITLTSPIIREENMREGDVTSGMVKDPDVLDRQKCLDALAALRHAK
WFQARANGLQSCV IIRILRDLQQRVPTWSDFPSWAMELLVEKAISSASSPQSPGDALRRVFECISSGII
LKGSPGLLDPCCKDPFDLATMTDQREDITSSAQFALRLLAFRQIHKVLMGMDPLPQMNQRFINHNRKR
RRDSDGVDGFEAEGKDKKDYDNF
    
```

TRTRPLE - GFP Tag - V

Restriction Sites: SgfI-MluI

Cloning Scheme:

Cloning sites used for ORF Shutting:



ACCN: NM_011767

ORF Size: 3222 bp

OTI Disclaimer: The molecular sequence of this clone aligns with the gene accession number as a point of reference only. However, individual transcript sequences of the same gene can differ through naturally occurring variations (e.g. polymorphisms), each with its own valid existence. This clone is substantially in agreement with the reference, but a complete review of all prevailing variants is recommended prior to use. [More info](#)

OTI Annotation: This clone was engineered to express the complete ORF with an expression tag. Expression varies depending on the nature of the gene.

Components: The ORF clone is ion-exchange column purified and shipped in a 2D barcoded Matrix tube containing 10ug of transfection-ready, dried plasmid DNA (reconstitute with 100 ul of water).

Reconstitution Method:

1. Centrifuge at 5,000xg for 5min.
2. Carefully open the tube and add 100ul of sterile water to dissolve the DNA.
3. Close the tube and incubate for 10 minutes at room temperature.
4. Briefly vortex the tube and then do a quick spin (less than 5000xg) to concentrate the liquid at the bottom.
5. Store the suspended plasmid at -20°C. The DNA is stable for at least one year from date of shipping when stored at -20°C.

RefSeq: [NM_011767.2](#), [NP_035897.2](#)

RefSeq Size: 4612 bp

RefSeq ORF: 3225 bp

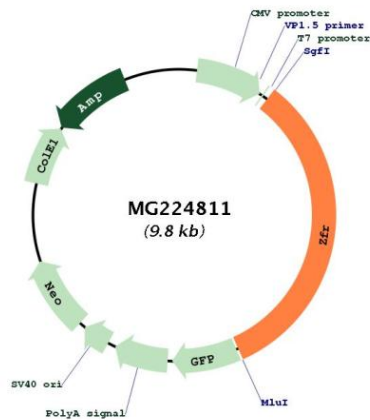
Locus ID: 22763

UniProt ID: [O88532](#)

Cytogenetics: 15 A1

Gene Summary: Involved in postimplantation and gastrulation stages of development. Binds to DNA and RNA. Involved in the nucleocytoplasmic shuttling of STAU2 (By similarity).[UniProtKB/Swiss-Prot Function]

Product images:



Circular map for MG224811