

## Product datasheet for **MG224798**

### Myo18a (NM\_011586) Mouse Tagged ORF Clone

#### Product data:

Product Type:	Expression Plasmids
Product Name:	Myo18a (NM_011586) Mouse Tagged ORF Clone
Tag:	TurboGFP
Symbol:	Myo18a
Synonyms:	MAJN; MyoPDZ; MysPDZ; SP-R210
Mammalian Cell Selection:	Neomycin
Vector:	pCMV6-AC-GFP (PS100010)
E. coli Selection:	Ampicillin (100 ug/mL)
ORF Nucleotide Sequence:	>MG224798 representing NM_011586 Red=Cloning site Blue=ORF Green=Tags(s)

TTTTGTAATACGACTCACTATAGGGCGGCCGGGAATTCGTCGACTGGATCCGGTACCGAGGAGATCTGCC  
GCC**CGATCGCC**

ATGTTTAACTCATGAAGAAAGATAAGGACAAAGATGGCGGGCGGAAGGAGAAGAAGGAAAAAAGGAGA  
AGAAGGAGAGGATGTCTGCGGCAGAAGTGGGAGCCTGGAAGAGATGAGCATGCGCCGTGGCTTTTTCAA  
CTTGAACCGTCTCCAAGCGGGAATCTAAGACGCGCCTGGAAATCTCCAACCCATCCCTATCAAGGTG  
GCCAGTGGCTCTGACCTGCACCTGACGGACATTGACTCTGACAGCAATCGGGGTAGCATCATCCTGGACT  
CAGGACACCTAAGCACAGCCAGCTCCAGTGATGACCTCAAGGGTGAAGAAGGCAGCTTCCGGGGCTCTGT  
GCTGCAGCGGGCAGCCAAGTTCGGTTCAGTGGCCAAGCAGAAGTCTCAGATGATTGTCAAACGTTTTTCC  
TTCTCTCAACGGAGCCGGATGAGAGTGCTCGGAGACCTCAACCCCTCAGAGCACTCTGCAGCCCAT  
CACCTCAGGTAGAGGTGCGGACGCTTGAGGGACAGCTAATGCAGCATCCTGGGCTAGGCATTCTCGACC  
AGGACCACGGTCTCGAGTCCCTGAGCTGGTGACTAAAAGATTCAGCTGATCTACGTCTTCCCGCTCTG  
GTGCCACCACCACCTCTGCTCTCCGGGAGCTGGAGTTACAACGAAGACCCACAGGAGACTTTGGCTTCT  
CACTGCGGCGCACAACTGCTGGATCGGGCCCTGAGGGTCAGGCTTATCGACGGGTGGTTCACCTTTCG  
TGAGCCAGGGGCAGGCACCAAGGACCTGGCCTTGGGCTGGTACCAGGAGATCGACTGGTGGAGATTAAT  
GGACAGAATGTGGAGAATAAATCCAGGGATGAAATTGTGGAGATGATCCGGCAGTCTGGGACAGTGTGC  
GGCTCAAGGTACAGCCCATCCAGAGCTTAGCGAGCTGAGCCGGAGCTGGCTTCGACTGGCGAGGGACA  
CCGAGGGAGCCGGCTGATGCCAAGACGGAAGAGCAGATTGCCGCTGAAGAGGCCTGGTATGAGACGGAG  
AAGGTGTGGTGGTCCATAGAGATGGATTCTCCTTAGCCAGCCAGCTCAAGTCTGAGGAGCTCAGCCTAC  
CCGAGGGGAAGGCGCTGTGAAGCTGGACCATGACGGAGCCATCCTGGATGTGGATGAAGATGATATAGA  
GAAGGCTAATGCTCCTTCATGTGACCGTCTAGAAGATCTGGCCTCACTGGTATACCTCAACGAGTCTAGC  
GTCCTGCATACACTGCGCCAGCGCTATGGGGCTAGCCTGCTACACACCTATGCTGGCCCCAGCCTGCTTG  
TCCTTAGCACCCGAGGGCTCCTGCTGTGATTACAGAAAGGTGATGCACATGTTCAAGGGGTGTCGGCG  
GGAGGACATGGCACCCACATCTACGCTGTAGCCAGACTGCATATAGGGCGATGTTGATGAGTCGTCAG



[View online >](#)

GACCAGTCCATTGTCCTTCTGGGTAGTAGTGGCAGTGGCAAGACTACCAGCTTTCAGCATCTGGTGCACT  
ATCTGGCTACCATCGCGGTACCAGTGGGACCAAGGTGTTCTCAGTGGAGAAGTGGCAGGCTCTGTCCAC  
CCTCTGGAAGCCTTTGGGAACAGCCCCACCATCATGAATGGCAGTGGCACCCTTCTCCCAGATCCTC  
TCCCTGGACTTTGACCAAGCTGGCCAGGTGGCTTCGGCTCCATCCAGACAATGCTCCTGGAGAAGCTGC  
GTGTGGCCCGGCCAGCCAGTGGCTACTTCAATGTCTTACTACTTGTGGCTGTGGGATGC  
CACCTCAGGACAGACTCCACCTGAACCACTGGCAGAGAACAATGTGTTTGAATTGTCCACTGTCC  
AAGCTGAGGAGAAGCAGAAGGCTGCACAGCAAGTTCAGTAAGCTCCAGGCTGCCATGAAGTGTGGCCA  
TCTCCCCGAGGAACAGAAGACCTGCTGGCTCATCCTGGCTTCCATCTACCACCTGGGGCTGCTGGAGC  
TACCAAGAAGCTGCTGAAGCTGGACGAAAGCAGTTTGCCCGCCACGAATGGGCCAGAAGGCAGCATA  
CTGCTGGCTGCAGCTTGAAGAGCTGTCTCGGCTATCTTCAAACACCAGCTAAAAGGAGGCACCTGC  
AACGGTCCACCTCCTTCCGTGAGGGCCCTGAGGAGAGCGGCTGGGAGAGGGCACCAAAGTGTCTCT  
GGAGTCTTAGAGGGTATGGCGTCTGGCTCTACAGTGTCTTACTCTCTCATCTCCCTGGTAAAC  
AGGGCTCTCAAGTCCAGCCAGCACTCACTCTGTTCCATGATGATCGTGGACACCAGGCTTCCAGAACC  
CTGAATGGGGCGGCTCGCCCGTGGAGCCTCCTTCGAGGAGCTGTCCACAACATATGCCAGGACAGGCT  
GCAGAGGCTGTTCCAGAGCGCACCTTCTCCAGGAGTTGGAGAGATACAAGGAGGATAACATAGAAGT  
GGTTTTGATGACTTGGAGCCAGTTGCAGATGACTCCGTGGCTGCTGTGGACCAGGCTTCCACCTGGTTC  
GCTCACTGGCCATGCCGATGAGGCAAGAGGGCTACTGTGGCTCCTGGAAGAGGAGGCACTGGTGCCTGG  
TGCGACAGAGGATGCCCTCCTTGATCGTCTTTCTCCTATTATGGCCCCAGGAGGGTGACAAAAAGGC  
CAGAGTCTCTTCTGCGAAGTAGCAAACCTCGGCCTTCTCCTGGGCCACAGCCACGGTACCAACTGGG  
TGGAGTACAACGTGGCTGGCTGGCTGAATTACACCAAGCAGAACCAGCCACCCAGAATGCACCCCGGCT  
TCTGCAGGACTCCAGAAAAAGATCATCAGTAACCTGTTTCTGGCCGGGCGGCGAGTCCACGGTGTCT  
TCAGGCTCGATTGCAGGCTGGAAGGTGGCTCCAGCTGGCTTGCAGGAGCAACAGCAGTGAAGAAAA  
CCTTACCACCGGATGGCCGCTCAAGAAGAAGTGCCTGTGCATACAGATTAAGCTGCAAGTGTGAGT  
CCTCATTGATACCATCAAGAGGTTCAAGATGCATTTCTGTCAGTCTTCTTCTGTCAGGAGGCTGG  
CCTGGGGAGCCCGGCTGCTCCTTCCCGCAGAGTCAAGCAGCAGTGTGAGCTGGACCTGCCCGGGAG  
ACCCCTGTGAGGCTGGGCTGCTACAACGGATGTGTCCCTGCTCCGAGCCAGCTCCGGGATCCCGCT  
GCTTGATGCGATGCGCATGTACCGCAAGGTTACCCAGACCACATGGTGTCTTCTGAGTCCGCGGCGC  
TTTGATGCTCTGGCTCCACACCTGACCAAGAAACATGGTGTAACTACATCGTGGTGGATGAGAAGCGG  
CTGTGGAAGAGCTGTGGAGTCCCTGGACTGGAAAAGAGCAGCTGCTGTCTGGGCTAAGCCGGGTGT  
CTTCCGGGAGGACGTTGGCACGGTGGAAAGAACAACGAGACGAGCAAACCAGCAGGCACTGACCCTG  
TCCAGGACGCTGCCGGGCTACCTTGCCCGCCAGCACTTCAAGAAGAGAAAGATCCAGGACCTGGCCA  
TTGCTGTGTGCAAGAAGACATCAAGAAGAACAAGGGGGTGAAGGACTGGCCCTGTTGGAAGCTCTTCA  
CACCGTGCAGCCCTCATCCAAGTTCAGCTGTGAGGAGCAGATCCGAAACAAAGACGAGGAGATCCAG  
CAGCTGCGCAGCAAGCTTGAAGGTGGAGAAGGAGAGGAACGAGCTCCGACTCAGCAGTACCCGCTAG  
AGACCCGATCTCAGAAGTACATCGGAGCTGACTGATGAACGCAACACGGGAGAGTCCGCTCCAGCT  
GCTGGACGCGGAGACAGCCGAGAGGCTCCGACCGAGAAGGAGATGAAAGAGCTACAGACCCAGTATGAC  
GCACTGAAGAAGCAGATGGAGGTGATGGAGATGGAAGTGTGGAAGCCCGGCTATTCCGGCAGCCGAGA  
TCAACGGGAGGTGGATGATGATGATGCAGGGGAGAGTGGAGGCTGAAGTACGAGCAGCTGTTCCGGG  
GGTGGACTTCAACAAGAAGCGGCTCCAGCAGGAGCTGGAAGACAAGATGGAGGTGGAACAGCAGAGCAGG  
AGGACGCTGGAGAGGCGGCTTGGGACCTGCAAGCAGATAGTGTGAGAGTCAACGGGCACTGCAGCAGC  
TCAAGAAGAAGTGCCAAAGGCTCACAGCTGAGCTGCAGGACACCAAGCTGCACCTGGAGGCCAGCAGGT  
CCGAAACCAGGCTGGAGAAGAAGCAGAGGAGGTTTCAGAGTGTGCTTCCAGGCCACGAGGAGACG  
CAGCGGGAGAAGCTGCAGAGGGAGAACTCCAGCGGGAGAAGGACATGCTCCTGGCTGAGGCTTTCAGCT  
TGAAGCAGCAAATGGAGGAAAAGACTTGGACATTGCGGGGTTTACCAGAAAGTGGTTTCTTGGAGGC  
TGAGCTTCAGGACATTTCTCAAGAGTCAAGGATGAGGCTTCTTGCCAAAGTCAAGAAGCAGCTC  
CGGACTTGGAGCCAAGTCAAGGACCAGGAAGAGGAGCTGGATGAGCAGGCTGGGAGTATACAGATGC  
TGGAGCAGGCAAGCTGCTGCTGGAGATGGAGATGGAGAGAATGAGCAGACCCATTCCAAGGAGATGGA  
GAGTCCGGATGAGGAGGTGGAAGAGGCCCGGCACTGATGTGAGAAGAAGTAAAACAGATGGAAGTGCAG  
CTCGAGGAGGAGTATGAAGACAAGCAGAAGGCGCTGCGGGAGAAAACGGGAGCTGGAGAGCAAGCTCTCA  
CGCTCAGTGACCAGGTGAACCAGCGGACTTTGAATCAGAGAAGCGGCTACGGAAGACCTGAAGCGCAC  
CAAAGCGCTGCTGGCAGATGCCAGATCATGCTGGACCTTAAAGAACAATGCCCGGAGCAAGAGGGAG  
ATTGCCAGCTGAAGAACCAGCTGGAAGAGTGGAAATTCACCTGTGCAGCAGCTGTAAGGCACGGAAAG

CGATGGAGGTGGAGATGGAAGACCTGCACCTGCAGATTGATGACATCGCCAAAGCCAAGACAGCGCTGGA  
 GGAGCAACTGAGTCGACTTCAGCGTGAGAAAAACGAGATTCAAAACCGGCTGGAAGAGGATCAGGAGGAC  
 ATGAATGAGCTGATGAAGAAGCACAAGGCAGCTGTGGCCAGGCCTCCCGGGACATGGCAGATGAACG  
 ATCTCCAGGCTCAGATTGAAGAGTCCAACAAGGAGAAGCAAGAGCTACAGGAGAAGCTACAAGCTCTGCA  
 GAGCCAGTGGAGTTCCTGGAGCAGTCCATGGTGGACAAGTCCCTCGTCAGCAGGCAGGAAGCGAAGATC  
 AGGGAGCTGGAGACACGCTGGAGTTCGAAAAGACCCAAGTGAAGCGCCTGGAGAACCTGGCCAGTCGGC  
 TCAAAGAAACCATGGAGAAGCTGACTGAGGAACGGGACCAGCGCCGACGCTGAGAACCCTGAGAAGGA  
 GCAGAACAAGAGGCTCCAGCGACAGCTTCGTGACACCAAGGAGGAGATGAGCGAGCTTGCCAGGAAGGAA  
 GCCGAGGCTAGCCGCAAGAAGCATGAACTGGAGATGGACCTGGAGAGCCTGGAAGCTGCTAACCAAAGCC  
 TGCAAGCCGACCTAAAGCTGGCGTTCAAACGCATTGGGGACTTGAAGCTGCCATTGAGGATGAGATGGA  
 AAGTGACGAGAACGAGGACCTCATCAACAGTGAGGGGACTCAGATGTGGACTCAGAGCTGGAGGACCGG  
 GTCGACGGGGTCAAGTCTGTTGTCAAAGAACAAGGGACCTTCTAAGGCACCTTCTGACGATGGCAGCT  
 TGAAGAGTTCCAGCCCAACCAGCCACTGGAAGCCACTCGCCCTGACCCATCGGATGATGAGCATGATCC  
 TGTGGACAGCATCTCCAGACCCCGTTCTCCACAGCTATCTGAGTGACAGCGACACAGAGGCCAAGCTG  
 ACAGAGACCAGTGA

ACGCGTACGCGGCCGCTCGAG – GFP Tag – GTTTAA

**Protein Sequence:**

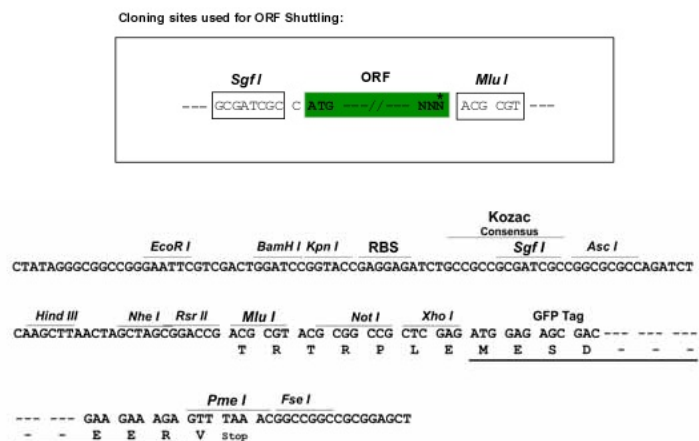
>MG224798 representing NM\_011586  
 Red=Cloning site Green=Tags(s)

MFNLMKKDKDKDGGRRKEKKEKKEKMSAAELRSLSEMSMRGFFNLRSSKRESKTRLEISNPIPIKV  
 ASGSDLHLTDIDSDSNRGSIIILDSGHLSTASSDDLKGEESFRGSVLQRAAKFGLAKQNSQMIVKRFS  
 FSQSRDESASETSTPSEHSAAPSPQVEVRTLEGQLMQHPGLGIPRPGPRSRVPELVTKRFPADLRPAL  
 VPPPPALRELELQRRPTGDFGFLRRTTMLDRAPEGQAYRRVVHFAEPGAGTKDLALGLVPGDRLVEIN  
 GQNVENKSRDEIVEMIRQSGDSVRLKVQPIPELSELRSWLRTGEGHREPADAKTEEQIAAEEAWYETE  
 KVWLVRHDGFLASQLKSEELSLPEGKARVKLDHDGAILDVEDDIEKANAPSCDRLEDLASLVYLNES  
 VLHLTRQRYGASLLHTYAGPSLLVLSTRGAPAVYSEKVMHMFKGCRRDMAPHIYAVAQTAAYRAMLSRQ  
 DQSI VLLGSSSGSKTTSFQHLVQYLATIAGTSKTKVFSVEKWQALSTLLEAFGNSPTIMNGSATRFSQL  
 SLDFDQAGQVASASIQTMLEKLRVARRPASEATFNVFYLLACGDATLRELHLNHLAENNVFQIPLS  
 KPEEKQKAAQFQSKLQAAMKVLAI SPEEQKTCWILASIYHLGAAGATKEAAEAGRKFARHEWAQKAA  
 LLGCSLEELSSAIFKHQLKGGTLQRSTFRQGPESGLGEGTKLSALECLEGMASGLYSELFTLLISLVN  
 RALKSSQHSLCSMMIVDTPGFQNPWEGSARGASFEELCHNYAQDRLQRLFHERTFQLERLYKEDNIEL  
 AFDDLEPVADDSVAAVDQASHLVRSLAHADAEARGLLWLEEEALVPGATEDALLDRLF SYYPQEGDKK  
 QSPLLRSKPRHFLGHSHGTNWVEYNVAGWLN YTKQNPATQNPRLQDSQKKIISNLFGRAGSATVL  
 SGIAGLEGGSQLALRRATSMRKTFTTGMAAVKKKSLCIQIKLQVDALIDTIKRSKMHFVHCFLPVAEGW  
 PGEPRSSRRVSSSELDLPPGDPCEAGLLQLDVSLLRAQLRGSRLLDAMRMYRQGYPDHMFVSEFR  
 FDVLAHLTKKHGRNYIVVDEKRAVEELLESLEKSSCCLGLSRVFFRAGTLARLEEQRDEQTSRHLTL  
 FQAACRGYLARQHFKKRIQDLAIRCQVQNIKKNGVKDWPWWKLF TTVRPLIQVQLSEEQIRNKDEEIQ  
 QLRSKLEKVEKERNELRLSSDRLETRISELSEL TDERNTGESASQLLDAETAERLRTEKEMKELQTQYD  
 ALKKQMEMEMEMEARLIRAAEINGEVDDDDAGGEWRLKYERAVREVDFTKKRLQOELEDKMEVEQQSR  
 RQLERRLDLQADSDSQRALQQLKKKQRLTAELODQTKLHLEGGQVRNHELEKKQRRFDSLSQAHEET  
 QREKLQREKLQREKMDMLAEAFSLKQMEKDLDIAGFTQKVVSLEAELQDISSQESKDEASLAKVKKQL  
 RDLEAKVKDQEEELDEQAGSIQMLEQAKLRLEMEMERMRTTHSKEMESRDEEVEEARQSCQKLLKQMEVQ  
 LEEYEYEDKQKALREKRELESKLSLSDQVNQRDFESEKRLRKDLKRTKALLADAQIMLDHLKNNAPSKRE  
 IAQLKNQLEESEFTCAAAVKARKAMEVEMEDLHLQIDDIKAKTAL EEQLSRLQREKNEIQNRLEEDQED  
 MNELMKKHKAAVAQASRDMAQMNDLQAQIEE SNKEKQELQEKLQALQSQVEFLEQSMVDKSLVSRQEAKI  
 RELETRLEFEKTVKRLNLSRLKETMEKLEERDQRAAAENREKEQNKRLQRQLRDTKEEMSELARKE  
 AEASRKKHELEMDLESLEAANQSLQADLKLAFKRIQDLQAAIEDEMESDENEDLINSEGSDVDSELEDR  
 VDGKSWLSKNKGPSKAPSDDGSLKSSSPTSHWKPLAPDPSDDEHDPVDSISRPRF SHSYLSDSDTEAKL  
 TETSA

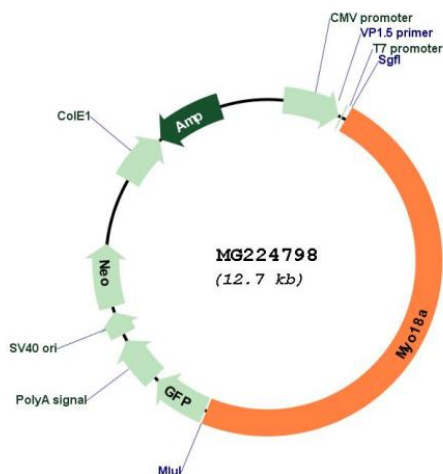
TRTRPLE – GFP Tag – V

Restriction Sites: SgfI-MluI

## Cloning Scheme:



## Plasmid Map:



**ACCN:** NM\_011586

**ORF Size:** 6105 bp

**OTI Disclaimer:** The molecular sequence of this clone aligns with the gene accession number as a point of reference only. However, individual transcript sequences of the same gene can differ through naturally occurring variations (e.g. polymorphisms), each with its own valid existence. This clone is substantially in agreement with the reference, but a complete review of all prevailing variants is recommended prior to use. [More info](#)

**OTI Annotation:** This clone was engineered to express the complete ORF with an expression tag. Expression varies depending on the nature of the gene.

**Components:** The ORF clone is ion-exchange column purified and shipped in a 2D barcoded Matrix tube containing 10ug of transfection-ready, dried plasmid DNA (reconstitute with 100 ul of water).

**Reconstitution Method:**

1. Centrifuge at 5,000xg for 5min.
2. Carefully open the tube and add 100ul of sterile water to dissolve the DNA.
3. Close the tube and incubate for 10 minutes at room temperature.
4. Briefly vortex the tube and then do a quick spin (less than 5000xg) to concentrate the liquid at the bottom.
5. Store the suspended plasmid at -20°C. The DNA is stable for at least one year from date of shipping when stored at -20°C.

**RefSeq:** [NM\\_011586.3](#), [NP\\_035716.1](#)

**RefSeq Size:** 7304 bp

**RefSeq ORF:** 6108 bp

**Locus ID:** 360013

**UniProt ID:** [Q9JMH9](#)

**Cytogenetics:** 11 B5

**Gene Summary:** May link Golgi membranes to the cytoskeleton and participate in the tensile force required for vesicle budding from the Golgi. Thereby, may play a role in Golgi membrane trafficking and could indirectly give its flattened shape to the Golgi apparatus (PubMed:19837035). Alternatively, in concert with LURAP1 and CDC42BPA/CDC42BPB, has been involved in modulating lamellar actomyosin retrograde flow that is crucial to cell protrusion and migration (By similarity). May be involved in the maintenance of the stromal cell architectures required for cell to cell contact (PubMed:10733906). Regulates trafficking, expression, and activation of innate immune receptors on macrophages. Plays a role to suppress inflammatory responsiveness of macrophages via a mechanism that modulates CD14 trafficking (PubMed:25965346). Acts as a receptor of surfactant-associated protein A (SFTPA1/SP-A) and plays an important role in internalization and clearance of SFTPA1-opsionized S.aureus by alveolar macrophages (PubMed:21123169). Strongly enhances natural killer cell cytotoxicity (By similarity).[UniProtKB/Swiss-Prot Function]