

## Product datasheet for **MG224780**

### **Dnaic1 (NM\_175138) Mouse Tagged ORF Clone**

#### **Product data:**

Product Type:	Expression Plasmids
Product Name:	Dnaic1 (NM_175138) Mouse Tagged ORF Clone
Tag:	TurboGFP
Symbol:	Dnaic1
Synonyms:	1110066F04Rik; b2b1526Clo; BB124644; Dnai1
Mammalian Cell Selection:	Neomycin
Vector:	pCMV6-AC-GFP (PS100010)
E. coli Selection:	Ampicillin (100 ug/mL)



[View online »](#)

ORF Nucleotide  
Sequence:

>MG224780 representing NM\_175138  
Red=Cloning site Blue=ORF Green=Tags(s)

TTTTGTAATACGACTCACTATAGGGCGGCCGGGAATTCGTCGACTGGATCCGGTACCGAGGAGATCTGCC  
GCCGCGATCGCC

ATGCCCTCGAAACAGATTCGTAAGCAGAGCATCAGTGTAAACCAGAGGAGCCAGGAGACGAGATGAAGATT  
CAGGGACTGATGTGGGAGAAGGAACTGATGAATGGTCCCAATCCAAAGCCACCGTGCACCCCTGACCA  
GCTGGAGCTGACCGATGCGGAGTTAAAGGAGGAGTTCACTCGGATCCTGACAGCCAAACAACCCACATGCA  
CCCCAGAATATTGTCAGGTACAGCTTCAAAGAGGGCACATATAAACTTATTGGTTTTGTGAACCAATGG  
CGGTTCACTTCAGCCAGGTGGGAACTGATACCCAAAGACTCAGATGAAGGCCGTGCCAGCACTACCG  
TGATGAGATGGTGGCAGGTTACAGGAGTCTATCAAGGTGGTACTTCAAGAGCAGAAAACCTTGAAGAA  
GAGGAAGAACCCAAAGAAGGAGAAGGAGAAGCAGAAGCAGAAGCAGAAGCCGGGAGCCAAACGGACATCC  
CTGCTGCAGCTGAGACAACCTGAAAAGGTGATTGAAGAAGAGCTGATGGCTCCTGTGCAGCCCAAGGAACG  
GAAGCTCAGCAACCAAGTTAACTTCAGTGAGAGAGCATCCAGACCTTCAACAACCCCTCCGGGATCGA  
GAGTGTGATGAGTGGAGCCTCCACCGAGGACGAATTTTCAGCCACAGCCAAATCAGTGGGAAATCTATGATG  
CCTATGTAGATGAGCTCGAGAAACAGGAAAAGACCAAAAGAGAAGGAGAAGGCAAAGACTCCAGTGGCTAA  
GAAAACAGAGAAGATGGCCATGAGGAACTGACATCTATGGAGTCCCAGAGTGTATGATATCACCAAAGTG  
ACCCAAGCTGCTAAAATCGTGGAGCGAATGGTCAACCAAATACGTATGATGATGTTGCTCAAGATTTTA  
AGTACTATGAGGATACTGCTGATGAATACAGGGACCGAGGGGTACGCTGCTGCCTCTCTGGAAGTTTCA  
AAATGACAAAGCCAAGCGCTGGCAGTCAACCGCTCTGCTGGAATCCAAAGTACAAGGATCTTTTTGCA  
GTGGGACACGGCTCCTATGACTTCATGAAACAGAGCCGTGGCATGCTGCTGCTCTACAGCATGAAGAACC  
CTAGCTTTCCCGAGTACATGTTTCAGCAGTGAGAGTGGCATCATGTGTCTGGACGTGCACGTGGACCACCC  
GTACCTGGTGGTCTGTTGGCTACTATGATGGCAACGTGGCCATCTACAACCTCAAGAAGCCCACTCGCAG  
CCCTGTTCCGCAGCACCTCCAAGTCTGGCAAGCACACGACCCTGTATGGCAGGTCAAGTGGCAGAAGG  
ATGACATGGACCACAACCTCAACTTCTTTTCTGTGTCGTCGATGGCAGGATAGTGTATGGACCCTCGT  
CAAGAGCGAGCTGGTTCACATCGACATTATCAAGCTGAAGACTGAAGGCAGCACTACAGAAATCCCCGAG  
GGGCTGCAGTTGCACACTGTAGGCTGTGGCACTGCCTTTGACTTCCACAAAGAGATCGACTACATGTTCC  
TGGTGGGCACAGAAGAGGAAAAATCTACAAGTCTCAAATCCTACTCCAGCCAGTTCTTGGACACCTA  
TGATGCTCACAACATGGCAGTAGACGCTGTGCTATGGAACCCATACCACCAAGGTCTTCATGTCCTGC  
AGCTCTGACTGGACAGTGAAGATCTGGGACCACACCATCAAGACCCCATGTTTCATTTATGATCTGAACT  
CAGCCGTGGGTGACGTGGCCTGGCACCCTACTTCCACTGTGTTTGCAGCAGTACCACGGACGGGAA  
GGCCCATGTGTTGACTTAGCGGTCAACAAGTATGAAGCTATCTGCAACCAAGCCTGTGGTAGCCAAGAAG  
AAGAACAAGATCACCCACGTGCAGTTCAATCCCATCCACCCCATCATAATCGTGGGCGACGACCGTGGCC  
ACATCATCTGCTCAAGCTCTCTCCAACCTTGGGAAAGATGCCAAAGGAGAAGAAGGGGCAGGAAGTGCA  
GAAGGGGCCAGCTGTGGAGATTGCAAAATTGGACAAACTGCTAAACCTCGTGAGGGAAGTAAAAACCAAA  
ACC

ACGCGTACGCGGCCGCTCGAG - GFP Tag - GTTTAA

**Protein Sequence:** >MG224780 representing NM\_175138  
 Red=Cloning site Green=Tags(s)

MPSKQIRKQSI SVTRGARRRDEDSGTDVGEGETDEWSQSKATVRPPDQLEL TDAELKEEFTRILTANNPHA  
 PQNIVRYSFKEGTYKLI GFVNQMAVHF SQVGNL IPKDSDEGRRQHYRDEM VAGSQESI KVVTSE AENLEE  
 EEEPKEGEGEAEAEAGS QTDIPAAAETTEKVIEEELMAPVQPKERKL TNQFNF SERASQTFNNPLRDR  
 ECQMEPPPRTNFSATANQWEIYDAYVDELEKQEKTEKEKAKTPVAKKTEKMAMRKLTSMESQSDDITKV  
 TQAAKIVERMVNQNTYDDVAQDFKYEDT ADEYRDQEGTLLPLWK FQNDKAKRLAVTALCWNP KYKDLFA  
 VGHGSYDFMKQSRGMLLLYSMKNPSFPEYMFSS ESGIMCLDVHVDHPYL VVVGYYDGNVAIYNLKKPHSQ  
 PCFRSTSKSGKHTDPVWQVKWQKDDMDHNLNFFSVSSDGRIVSWTLVKSELVHIDI IKLKTEGSTTEIPE  
 GLQLHTVCGGTAFDFHKEIDYMF LVGTEEGKIYKCSKSYSSQFLD TYDAHNAVD AVLWNPYHTKVFMSC  
 SSDWTVKIWDHTIKTPMFIYDLNSAVGDVAWAPYSSTVFAAVTTDGKAHVFDLAVNKYEAI CNQPVVAKK  
 KNKITHVQFNPIHP I IIVGDDRGH I ICKLSPNL RKMPKEKKGQEVQKGP AVEIAKLDKLLNLVREVKT  
 T

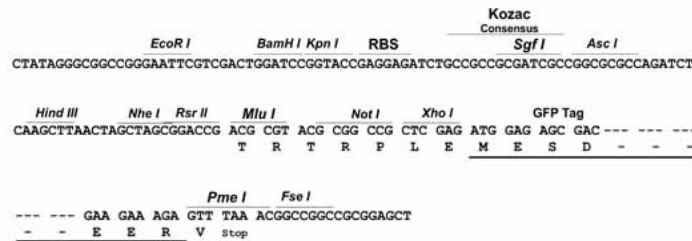
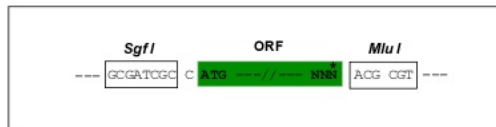
TRTRPLE - GFP Tag - V

**Restriction Sites:**

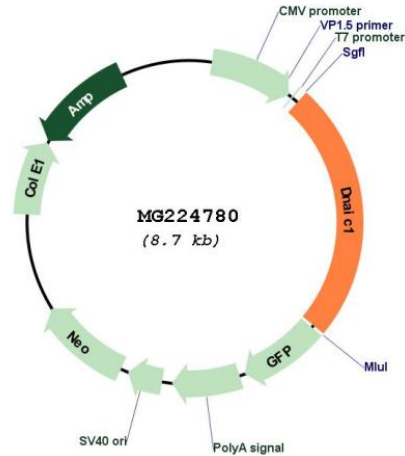
SgfI-MluI

**Cloning Scheme:**

Cloning sites used for ORF Shutting:



Plasmid Map:



ACCN: NM\_175138

ORF Size: 2103 bp

OTI Disclaimer: The molecular sequence of this clone aligns with the gene accession number as a point of reference only. However, individual transcript sequences of the same gene can differ through naturally occurring variations (e.g. polymorphisms), each with its own valid existence. This clone is substantially in agreement with the reference, but a complete review of all prevailing variants is recommended prior to use. [More info](#)

OTI Annotation: This clone was engineered to express the complete ORF with an expression tag. Expression varies depending on the nature of the gene.

Components: The ORF clone is ion-exchange column purified and shipped in a 2D barcoded Matrix tube containing 10ug of transfection-ready, dried plasmid DNA (reconstitute with 100 ul of water).

Reconstitution Method:

1. Centrifuge at 5,000xg for 5min.
2. Carefully open the tube and add 100ul of sterile water to dissolve the DNA.
3. Close the tube and incubate for 10 minutes at room temperature.
4. Briefly vortex the tube and then do a quick spin (less than 5000xg) to concentrate the liquid at the bottom.
5. Store the suspended plasmid at -20°C. The DNA is stable for at least one year from date of shipping when stored at -20°C.

RefSeq: [NM\\_175138.4](#), [NP\\_780347.2](#)

RefSeq Size: 2508 bp

RefSeq ORF: 2106 bp

Locus ID: 68922  
UniProt ID: [Q8COM8](#)  
Cytogenetics: 4 A5  
Gene Summary: Part of the dynein complex of respiratory cilia.[UniProtKB/Swiss-Prot Function]