

Product datasheet for **MG224770**

Bmf (NM_138313) Mouse Tagged ORF Clone

Product data:

Product Type: Expression Plasmids
Product Name: Bmf (NM_138313) Mouse Tagged ORF Clone
Tag: TurboGFP
Symbol: Bmf
Synonyms: AW260063; AW411872
Mammalian Cell Selection: Neomycin
Vector: pCMV6-AC-GFP (PS100010)
E. coli Selection: Ampicillin (100 ug/mL)
ORF Nucleotide Sequence: >MG224770 representing NM_138313
 Red=Cloning site Blue=ORF Green=Tags(s)

TTTTGTAATACGACTCACTATAGGGCGGCCGGAATTCGTCGACTGGATCCGGTACCGAGGAGATCTGCC
 GCC**CGATCGCC**

ATGCCCGAGCGGGCGTATTTGGAAACAATACCGCGGGTGTGCCGTGGCCTCCTCCCGGCCAGCTCG
 CGCCTGCAGCAGTCGCTGCCGAGCCCGGCCACCGCCTCCACCGCAGCCCGCTGGAGTTGCCCCCTT
 CTTCCAATCGAGTGTGGGCACCAAGCCCCCGAGTGTTCTTACCCTGGACCCTGGCGCAGAGCCCTGG
 CATCACAACCTCGGAGGCTGAGACGCTGTCTGGAGTCACCCAGGAGAGATGGAGCCACCTCAGTGTGTGG
 AGGAGCTAGAAGATGATGTGTTCCAGTCAGAGGATGGGGAGCCAGGGACACAGCCTGGGGCTTGCTCTC
 TGCTGACCTGTTTGCCCAGAGCCAGCTGGACTGTCCCCTCAGTCGACTCCAGCTCTCCCTCACCCTAT
 TGCTGTGGTCCCGGACTCCGGCCATAAGCCAGGAAGACAAGGCCACTCAGACCCCTCAGTCCAGTTCCTC
 CAAGCCAGGGTGTATGCTGCCTTGTTGGGGTGACAGAGGAACCCAGAGACTCTTTACGGCAACGCTGG
 CTACAGGCTTCTCTCCCTGCCAGTTTCCCTGCAGGCTCACCCCTTGGGGAGCAGCCCCCTGAAGGACAG
 TTCCTTACGACCCGAGCAGAGGTGCAGATCGCCAGAAAGCTTCAGTGTATTGCAGACCAGTTCATCGGC
 TTCATACGCAACAACACCAGCAGAACCAGACCGTGCCTGGTGGCAGGTCTTCTTTCTTCAAACCT
 CGCCCTGAACAGACAAGAAAACAGGGAAGGGTGGGGCCCTGG

ACGCGTACGCGGCCGCTCGAG - GFP Tag - GTTTAA



[View online »](#)

Protein Sequence: >MG224770 representing NM_138313
 Red=Cloning site Green=Tags(s)

MPGAGVFWKQYRAVCRGLLPRQLAPAAVAAAARATASHRSPLEFAPFFPIECGHQAPRVFFTLDPGAEPW
 HHNSEAETLSWSHPGEMEPQCVEELEDVDFQSEDEPGTQPGLLSADLFAQSQLDCPLSRLQLFPLTH
 CCGPGLRPISQEDKATQTLSPASPSQGVMLPCGVTEEPQRLFYGNAGYRLPLPASFPAGSPLGEQPPEGQ
 FLQHRAEVQIARKLQCIADQFHRLHTQQHQQRDRAWVQVFLFLQNLALNRQENREGVGPW

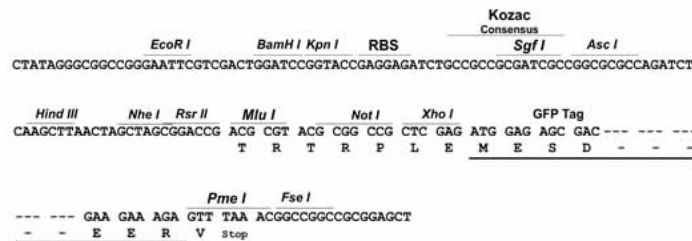
TRTRPLE - GFP Tag - V

Chromatograms: https://cdn.origene.com/chromatograms/ja1674_e08.zip

Restriction Sites: SgfI-MluI

Cloning Scheme:

Cloning sites used for ORF Shutting:



ACCN: NM_138313

ORF Size: 813 bp

OTI Disclaimer: The molecular sequence of this clone aligns with the gene accession number as a point of reference only. However, individual transcript sequences of the same gene can differ through naturally occurring variations (e.g. polymorphisms), each with its own valid existence. This clone is substantially in agreement with the reference, but a complete review of all prevailing variants is recommended prior to use. [More info](#)

OTI Annotation: This clone was engineered to express the complete ORF with an expression tag. Expression varies depending on the nature of the gene.

Components: The ORF clone is ion-exchange column purified and shipped in a 2D barcoded Matrix tube containing 10ug of transfection-ready, dried plasmid DNA (reconstitute with 100 ul of water).

Reconstitution Method:

1. Centrifuge at 5,000xg for 5min.
2. Carefully open the tube and add 100ul of sterile water to dissolve the DNA.
3. Close the tube and incubate for 10 minutes at room temperature.
4. Briefly vortex the tube and then do a quick spin (less than 5000xg) to concentrate the liquid at the bottom.
5. Store the suspended plasmid at -20°C. The DNA is stable for at least one year from date of shipping when stored at -20°C.

RefSeq: [NM_138313.4](#)

RefSeq Size: 4654 bp

RefSeq ORF: 816 bp

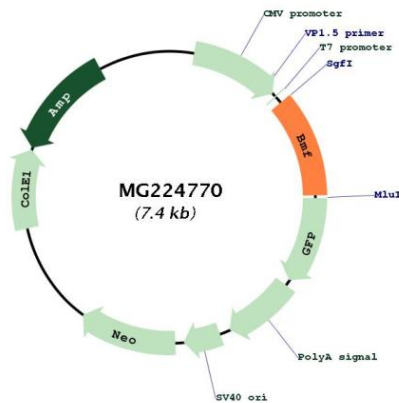
Locus ID: 171543

UniProt ID: [Q91ZE9](#)

Cytogenetics: 2 E5

Gene Summary: May play a role in apoptosis.[UniProtKB/Swiss-Prot Function]

Product images:



Circular map for MG224770