

Product datasheet for **MG224698**

Agxt2 (NM_001031851) Mouse Tagged ORF Clone

Product data:

Product Type:	Expression Plasmids
Product Name:	Agxt2 (NM_001031851) Mouse Tagged ORF Clone
Tag:	TurboGFP
Symbol:	Agxt2
Synonyms:	AI303810; AI663818
Mammalian Cell Selection:	Neomycin
Vector:	pCMV6-AC-GFP (PS100010)
E. coli Selection:	Ampicillin (100 ug/mL)



[View online »](#)

ORF Nucleotide Sequence:

>MG224698 representing NM_001031851
 Red=Cloning site Blue=ORF Green=Tags(s)

TTTTGTAATACGACTCACTATAGGGCGGCCGGGAATTCGTCGACTGGATCCGGTACCGAGGAGATCTGCC
 GCC**GCGATCGCC**

ATGTCTCTAGCCTGGAGAAATTTGCAGAAACCCTTTTATCTGGAGACTTCTCTCAGAATACTCCAGATGC
 GTCCATCCCTGAGCTTAGGTGCTCCCGATAGCTGTGCCAAGCTCACTCTTATACAAAAGCACAGCAT
 GCCACCGTGTGACTTCTCACCTGAGAAATACCAGTCCCTGGCCTACAGCCGTGTGCTGGCGATTACAAG
 CAGCATCTTTCTCTGTGGATACAGCCTATTTCCGGAAGCCTTTGCTACTCCACCAGGGACACATGGAGT
 GGCTCTTTGATTCTGAGGAAACAGATACCTGGACTTCTTCTCTGGGATTGCTACTGTTAGTGTGGTCA
 CTGCCACCGAAGGTAAGTGCAGTGGCAAAAAACAGATAGACCGCCTGTGGCATAACAAGTTCTGTCTTC
 TTCCACTCTCCGATGCATGAATATGCAGAGAAGCTCTCAGCACTCCTTCTGAGCCTCTTAAGGTCATTT
 TCTTGGTGAACAGTGGATCAGAAGCCAACGACCTGGCCATGGTGTGGCCGAGCACACTCGAATCACAC
 AGACATCATATCTTTAGAGGAGCCTATCACGGATGCAGTCCCTATACACTTGGCCTGACAAATGTCGGA
 ATCTACAAGATGGAAGTCCCTGGTGGGATAGGCTGCCAATCAACAATGTGCCCAGATGTTTTCCGTGGCC
 CTTGGGGAGGAATCCATTGTCGAGATTCTCCAGTGCAAACAGTGAGGGACTGCAGCTGTGCTCCAGGTCC
 AAATGGGCAGGGAGGAAGGCGAGAATGCCATTCTAACATCAAAATGCTGTGACTTGTGTATGTGTGTATGT
 TTTGCTACAGACTGTGCCAAGCTAAAGAACGGTATATCGAACAAATCAAGGTGTGAATGGTGTGTCCAGTACCCAAA
 GGAGTTTCTGAAGGAAGCCTTTGCGTTGGTCCGAGAGCGGGGAGGTGTGTGCATCGCAGATGAAGTGCAG
 ACAGGCTTTGGCAGGCTGGGCTCACTTCTGGGGTTCCAGACACATGATGTACTTCTGACATTTGCA
 CCATGGCTAAAGGATTGAAATGGCTTCCCATGGCTGCAGTTGTGACCACTCCAGAAATGCGAAGT
 TTTGGCTAAACGTTTGTCTTCACTTCAGCACATTTGGAGGAAATCCCTGGCCTGCCCATTTGGATCTGCT
 GTGCTTGAGGTGATTGAAGAAGAAAATCTCCAGAGAAACAGTCAAGAAGTTGGCACCTACATGCTGCTGA
 AGTTTGTAAAGCTTCGGGACGAATTTGATATCGTTGGGGATGTCCGAGGCAAAGGCTTATGGTGGGGAT
 AGAGATGGTTCAAGACAAGATAAGCCGACAACCTCTTCTAAAACAGAAGTCAATCAAAATCCATGAGGAC
 TGCAAAGACATGGGGCTCCTAGTGGGTAGAGGTGGTAATTTTTCTCAGACTTTTCGAATTTGCCCCCGA
 TGTGTGCACGAAGATGGAAGTAGATTTTGCATATGAAGTATTTTCGAGCTGCCTAATTCACACATGGA
 GAGAAGAGCTAAG

ACGCGTACGCGGCCGCTCGAG - GFP Tag - GTTTAA

Protein Sequence:

>MG224698 representing NM_001031851
 Red=Cloning site Green=Tags(s)

MSLAWRNLQKPFYLETSLRILQMRPSLSLGASRIAVPKLTLHTKHSMPPCDFSPEKYQSLAYSRLAIHK
 QHLSPVDTAYFRKPLLLHQHMEWLFDESEGNRYLDFFSGIVTVSVGHCHPKVSAVAKKQIDRLWHTSSVF
 FHSPMHEYAEKLSALLPEPLKVIFLVNSGSEANDLAMVMARAHSNHTDII SFRGAYHGCSPYTLGLTNVG
 IYKMEVPGGIGCQSTMCPDVFRGPWGGIHCARDSPVQTVRDCSCAPGPNQGGRRECHSNIKCCDLMCVC
 FATDCCQAKERYIEQFKDTLNTSVATSIAGFFAEPIQGVNGVVQYPKEFLKEAFALVRERGGVCIADDEVQ
 TGFGRLGSHFWGFQTHDVL PDIVTMAKIGNGFPMAAVVTTPEIAKSLAKRLLHFSTFGGNPLACAIGSA
 VLEVIEEENLQRNSQEVGTYMLLKFAKL RDEFD IVDVRGKGLMVGIEMVQDKISRQPLPKTEVNIHED
 CKDMGLLVGRGGNFSQTFRIVPPMCVTKMEVDFAYEVFRAALI QHMERRAK

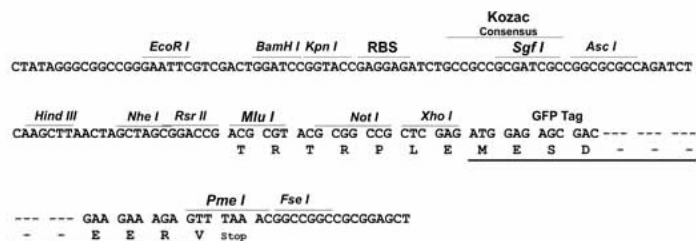
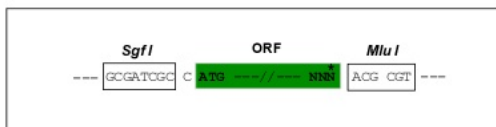
TRTRPLE - GFP Tag - V

Restriction Sites:

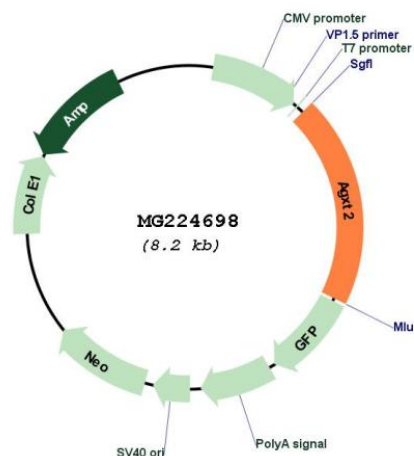
Sgfl-MluI

Cloning Scheme:

Cloning sites used for ORF Shutting:



Plasmid Map:



ACCN:	NM_001031851
ORF Size:	1623 bp
OTI Disclaimer:	The molecular sequence of this clone aligns with the gene accession number as a point of reference only. However, individual transcript sequences of the same gene can differ through naturally occurring variations (e.g. polymorphisms), each with its own valid existence. This clone is substantially in agreement with the reference, but a complete review of all prevailing variants is recommended prior to use. More info
OTI Annotation:	This clone was engineered to express the complete ORF with an expression tag. Expression varies depending on the nature of the gene.
Components:	The ORF clone is ion-exchange column purified and shipped in a 2D barcoded Matrix tube containing 10ug of transfection-ready, dried plasmid DNA (reconstitute with 100 ul of water).
Reconstitution Method:	<ol style="list-style-type: none">1. Centrifuge at 5,000xg for 5min.2. Carefully open the tube and add 100ul of sterile water to dissolve the DNA.3. Close the tube and incubate for 10 minutes at room temperature.4. Briefly vortex the tube and then do a quick spin (less than 5000xg) to concentrate the liquid at the bottom.5. Store the suspended plasmid at -20°C. The DNA is stable for at least one year from date of shipping when stored at -20°C.
RefSeq:	NM_001031851.1 , NP_001027021.1
RefSeq Size:	1825 bp
RefSeq ORF:	1626 bp
Locus ID:	268782
Cytogenetics:	15 A1
Gene Summary:	Can metabolize asymmetric dimethylarginine (ADMA) via transamination to alpha-keto-delta-(NN-dimethylguanidino) valeric acid (DMGV). ADMA is a potent inhibitor of nitric-oxide (NO) synthase, and this activity provides mechanism through which the kidney regulates blood pressure.[UniProtKB/Swiss-Prot Function]