

Product datasheet for **MG224696**

Trmt1 (NM_001164560) Mouse Tagged ORF Clone

Product data:

| | |
|---------------------------|---|
| Product Type: | Expression Plasmids |
| Product Name: | Trmt1 (NM_001164560) Mouse Tagged ORF Clone |
| Tag: | TurboGFP |
| Symbol: | Trmt1 |
| Synonyms: | 6720406L13Rik; 6720477L24; D8Erttd812e |
| Mammalian Cell Selection: | Neomycin |
| Vector: | pCMV6-AC-GFP (PS100010) |
| E. coli Selection: | Ampicillin (100 ug/mL) |



[View online »](#)

ORF Nucleotide
Sequence:

>MG224696 representing NM_001164560
Red=Cloning site Blue=ORF Green=Tags(s)

TTTTGTAATACGACTCACTATAGGGCGGCCGGAATTCGTCGACTGGATCCGGTACCGAGGAGATCTGCC
GCCGCGATCGCC

ATGCGAGAAGCATGCACCGTGA CTGCTGGATCCTCTGTAGAGCTCAGTTTCATGGAACGGAAGGCC
AGAAGCCTCCCTCTCCACCAGCGATGGAGAACGGCACCCGGTCTGGGAAGAGCGCCACCCGCGGACCC
GGTTGCGACTGTCACTGAGGGCGCCGCAAAAATCGTCTTTCCAGTGCTAACGAGTTTTCTATAACCCG
GTGCAGGAATCAACCGGACCTGACGTGTGTGTGATCACAGAGTTTGTCTGAATTCATCTTGGGGCCA
AGGGAATCCAGATCAAGTTCCAGGAGAGAAGGACTCAGAGAAAAAGCTGTGGACTTGTCTGATCAAGA
AGAGGAAACAGCTGAAAAGAATGAAAATCTGGCCCCAGGGGACTGGCCACGGACTGCTGCAGTGGGTGAG
ATCTGTGAGGAAGGTCTACGAGTGTGGAAGGCCTGGCAGCTTCCGGTCTGCGCTCCATCCGTTTTGCC
TGGAGGTTCTGGCCTCCAGTCTGTGGTGGCAATGATGCCTCTGCCCGGCTGTAGAGCTTATGCACAG
AAATGTGGAGCTCAATGGTGTGGCAGATCTTGTTCAGCCCAACCAGGCAGATGCCCGGATGCTGATGTAC
CAACACAAAAGGCACCTGAGCGATTTGATGTCAATTGACCTGGACCCCTATGGCAGCCCCGCCCTTCC
TGGATGCAGCAGTGCAGGCTGTGAGTGTGGAGGACTTCTGTGTGTACCTGCACAGACATGGCAGTCTCT
GGCGGGAAACAGCGGAGAGACATGCTACAGCAAGTATGGGGCCATGGCCCTCAAGAGCCGAGCCTGCCAT
GAAATGGCCCTGCGGATTGTGCTGCACAGCCTGGACCTGCACGCCAAGTCTACCAGCGCTATATCGTGC
CGCTGCTCAGCATCAGTGTGACTTCTATATCCGGGTCTTTGTACGTGTTTTACAGGCCAGGCCAAGGT
TAAGTCTCAGCCAGCAAACAGGCCCTGGTGTCCAGTGTGTGGGTTGTGGAGCCTTCTACCTGCAACGC
CTTGGCAAAGCATCAGGAGACCTGGTGGCAGGATCAAGTCTCTGCAGCCTGTGGTCTCCAGTAACTC
CCGAGTGTGAGCACTGTGGACAGAGACACCAGCTTGGGGCCCCATGTGGGCAGAGCCCATCCATGACCT
GGACTTTGTGGCCGAGTTCTTGACGCAGTGACCACGAATCCTGGCCGCTTCCACACTTCCATGAGGATC
CAAGGCGTCTCAGTGTGTTACTGAGGAACTTCTGATGTCCCTCTCTACTACACACTGGACCAACTGA
GCAGCACTATCCACTGCAACACACCCCGCCTTCTGCAGCTTCGGTCTCAGCTCTCCTTCATGCTGGTTCCG
AGTCTCTCTCTCCATGCTTGTAAAGATGCAGTGAAGACAGATGCTCCCCCTGAGGCCCTCTGGGACATC
ATGCGTTGCTGGGAAAAGGAATGTCCAGTGAACGGGAGCGGCTGTCTGAAAGCAGTCCAGCATTCCGAA
TTCTTGTGTGGAGCCCAGGCTGAAGGCCAAGTCAACATCCGGGAAGACGCCAACCCAGCTCCCGCCA
GCGAGGACTTAAGCGCTTCCAGGCCAATCCAGAAGCCAAGTGGGGTCCCCGGCCCGTCCCGGCCAGGG
GGCAAGGCAGCAAGTGAAGATCTAGCAGGGAGGCGGAGGCTGCTACAGAATAAGAGGAAGGAGCCAGCTG
AGGACCCGGCCAGCGTGCAGCTCGCCTTAAGACATTTCTTGCAAACGATTCAAAGAGGGTACCTGTCA
ACTAGGGGACCAGTGTGTTATTACACAGTCTGCGAGCTCTGTGGCCTCTGGTGTATATCCCCATCGAA
GAATGTCCAGAGACTACCACCAAGATCTCCCTGGACCAAGGCTGCTGTGGGGTATTCTGGGCCAG
GTGTAGAC

ACGCGTACGCGGCCGCTCGAG - GFP Tag - GTTTAA

Protein Sequence: >MG224696 representing NM_001164560
 Red=Cloning site Green=Tags(s)

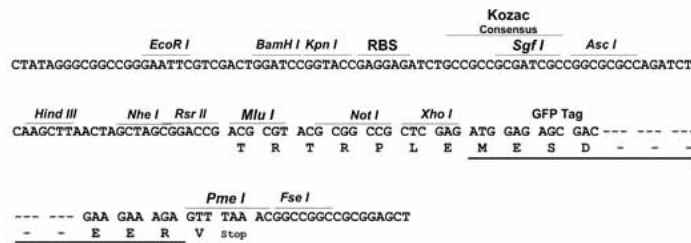
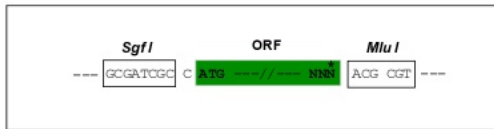
MREACTVTRWILLCRAQFMERKAQKPPSPAMENGRSWEERPPADPVATVTEGAAKIVFPSANEVFYNP
 VQEFNRDLTCAVITEFARIHLGAKGIQIKVPGEKDSEKIAVDLSDQEEETAGKNENLAPGDWPRTAAVGE
 ICEEGLRVLEGLAASGLRSIRFALEVPLQSVVANDASARAVELMHRNVELNGVAHLVQPNQADARMLMY
 QHQKAPERFDVIDLDPYGSPPAPFLDAAVQAVSDGGLLCVTCTDMAVLAGNSGETCYSKYGAMALKSRACH
 EMALRIVLHSLDLHANCYQRYIVPLLSISADFYIRVFRVFTGQAKVKSSASKQALVFQCVGCGAFYLQR
 LGKASGDPGGRIKFSAAACGPPVTPCEHCGQRHQLGGPMWAEPIDHDLDFVGRVLDVTTNPRGFHTSMRI
 QGVL SVVTEELPDVPLYYTLDQLSSTIHCNTPRLLQLRSALLHAGFRVSLSHACKNAVKTDAPEALWDI
 MRCWEKECPVKRERLSESSPAFRILAVEPRLKANFNIRE DANPSSRQRLKRFQANPEANWGPRPRARP
 GKAAEDLAGRRRLQNKRKEPAEDPAQRAARLKTFFPCKRFKEGTCQLGDQCCYSHSPAAPVASGDIPIE
 ECPETTTKISPGPKAAAGGIPGPGVD

TRTRPLE - GFP Tag - V

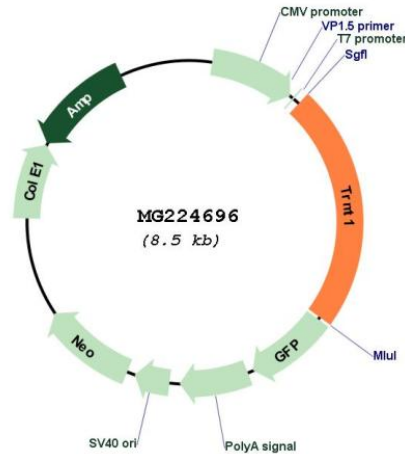
Restriction Sites: SgfI-MluI

Cloning Scheme:

Cloning sites used for ORF Shuttling:



Plasmid Map:



ACCN: NM_001164560

ORF Size: 1968 bp

OTI Disclaimer: The molecular sequence of this clone aligns with the gene accession number as a point of reference only. However, individual transcript sequences of the same gene can differ through naturally occurring variations (e.g. polymorphisms), each with its own valid existence. This clone is substantially in agreement with the reference, but a complete review of all prevailing variants is recommended prior to use. [More info](#)

OTI Annotation: This clone was engineered to express the complete ORF with an expression tag. Expression varies depending on the nature of the gene.

Components: The ORF clone is ion-exchange column purified and shipped in a 2D barcoded Matrix tube containing 10ug of transfection-ready, dried plasmid DNA (reconstitute with 100 ul of water).

Reconstitution Method:

1. Centrifuge at 5,000xg for 5min.
2. Carefully open the tube and add 100ul of sterile water to dissolve the DNA.
3. Close the tube and incubate for 10 minutes at room temperature.
4. Briefly vortex the tube and then do a quick spin (less than 5000xg) to concentrate the liquid at the bottom.
5. Store the suspended plasmid at -20°C. The DNA is stable for at least one year from date of shipping when stored at -20°C.

RefSeq: [NM_001164560.1](#), [NP_001158032.1](#)

| | |
|---------------|--|
| RefSeq Size: | 2083 bp |
| RefSeq ORF: | 1971 bp |
| Locus ID: | 212528 |
| UniProt ID: | Q3TX08 |
| Cytogenetics: | 8 41.02 cM |
| Gene Summary: | Dimethylates a single guanine residue at position 26 of most tRNAs using S-adenosyl-L-methionine as donor of the methyl groups.[UniProtKB/Swiss-Prot Function] |