

Product datasheet for **MG224695**

Polb (NM_011130) Mouse Tagged ORF Clone

Product data:

Product Type: Expression Plasmids
Product Name: Polb (NM_011130) Mouse Tagged ORF Clone
Tag: TurboGFP
Symbol: Polb
Synonyms: A430088C08Rik
Mammalian Cell Selection: Neomycin
Vector: pCMV6-AC-GFP (PS100010)
E. coli Selection: Ampicillin (100 ug/mL)
ORF Nucleotide Sequence: >MG224695 representing NM_011130
Red=Cloning site Blue=ORF Green=Tags(s)

TTTTGTAATACGACTCACTATAGGGCGGCCGGAATTCGTCGACTGGATCCGGTACCGAGGAGATCTGCC
GCC**CGATCGCC**

ATGAGCAAACGCAAGGCGCCGAGGAGACCCTCAACGGCGGCATCACGGACATGCTCGTGGAACTCGCAA
ACTTTGAGAAGAACGTGAGCCAGGCGATCCACAAGTACAATGCGTACAGAAAAGCGGCATCTGTGATAGC
CAAGTACCCACACAAAATCAAGAGCGGAGCGGAAGCTAAGAACTGCCAGGAGTAGGAACAAAATTGCT
GAAAAGATTGATGAATTTTAGCAACTGGAAAATTGCGTAACTGGAAAAGATTCGTCAGATGATACAA
GTTTCATCCATCAATTTCTGACTCGAGTTACTGGCATTGGACCATCTGCTGCAAGGAAGTTGTAGATGA
AGGAATTAAGACATTAGAAGATCTCAGGAAAAATGAAGATAAACTGAACCATCATCAACGAATTGGGCTG
AAATATTTGAGGACTTTGAAAAGAGAATTCCTCGTGAGGAAATGCTGCAGATGCAGGATATTGACTTA
ATGAAATTAAGAAAGTGGACTCTGAGTACATTGCTACAGTCTGTGGCAGTTTCAGAAGAGGCGCAGAGTC
GAGTGGAGACATGGATGTCCTGCTGACCCACCCAACTTACGTCAGAGTCCAGCAAACAGCCAAAGTTG
TTACATCGTGTGTGGAACAGTTACAAAAGTCCATTTTACAGATACTCTGTCAAAGGGTGAACAA
AGTTTATGGGTGTTTCCAGCTTCCAGCGAGAAGGATGGAAAGGAATATCCACACAGGAGAATCGATAT
CAGGTTGATCCCCAAGATCAGTACTACTGTGGTGTCTCTACTTCACTGGGAGTGACATCTTTAATAAG
AACATGAGAGCGCACGCCCTGGAAAAGGGCTTCAATCAATGAGTACCCATCCGCCCCCTGGGGTCA
CTGGAGTCGCTGGGAGCCCTTCTGTGGACAGTGAGCAGGACATTTTGTATTACATCCAGTGGCGCTA
CCGGGAGCCCAAGGATAGAAGTAAA

ACGCGTACGCGGCCGCTCGAG - GFP Tag - GTTTAA



[View online »](#)

Protein Sequence: >MG224695 representing NM_011130
 Red=Cloning site Green=Tags(s)

MSKRKAPQETLNGGITDMLVELANFEKNVSQAIHKYNAYRKAASVIKYPHKIKSGAEAKKLPVGVGTKIA
 EKIDEFLATGKLRKLEKIRQDDTSSSINFLTRVTGIGPSAARKFVDEGIKTLEDLRKNEDKLNHHQRIGL
 KYFEDFEKRIPREEMLMQDIVLNEIKKVDSEYIATVCGSFRRGAESSGDMVLLTHPNFTSESSKQPKL
 LHRVVEQLQKVHFITDTLSKGETKFMGVCQLPSEKDGKEYPHRRIDIRLIPKDQYYCGVL YFTGSDIFNK
 NMRHAHALEKGFITNEYTIRPLGVTGVAGEPLPVDSEQDIFDYIQWRYREPKDRSE

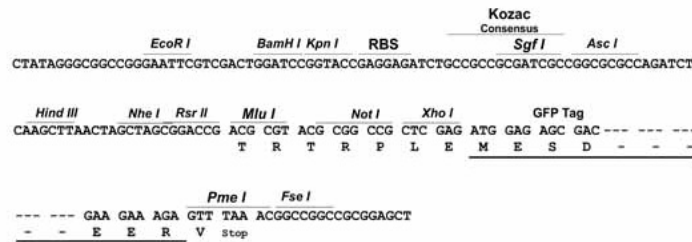
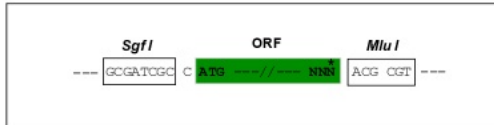
TRTRPLE - GFP Tag - V

Restriction Sites:

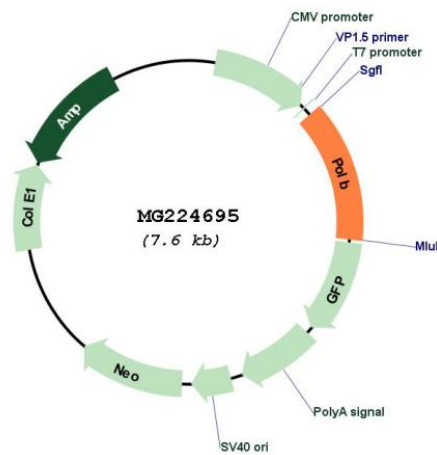
SgfI-MluI

Cloning Scheme:

Cloning sites used for ORF Shuttling:



Plasmid Map:



ACCN: NM_011130

ORF Size: 1005 bp

OTI Disclaimer:	The molecular sequence of this clone aligns with the gene accession number as a point of reference only. However, individual transcript sequences of the same gene can differ through naturally occurring variations (e.g. polymorphisms), each with its own valid existence. This clone is substantially in agreement with the reference, but a complete review of all prevailing variants is recommended prior to use. More info
OTI Annotation:	This clone was engineered to express the complete ORF with an expression tag. Expression varies depending on the nature of the gene.
Components:	The ORF clone is ion-exchange column purified and shipped in a 2D barcoded Matrix tube containing 10ug of transfection-ready, dried plasmid DNA (reconstitute with 100 ul of water).
Reconstitution Method:	<ol style="list-style-type: none">1. Centrifuge at 5,000xg for 5min.2. Carefully open the tube and add 100ul of sterile water to dissolve the DNA.3. Close the tube and incubate for 10 minutes at room temperature.4. Briefly vortex the tube and then do a quick spin (less than 5000xg) to concentrate the liquid at the bottom.5. Store the suspended plasmid at -20°C. The DNA is stable for at least one year from date of shipping when stored at -20°C.
RefSeq:	NM_011130.2 , NP_035260.1
RefSeq Size:	1227 bp
RefSeq ORF:	1008 bp
Locus ID:	18970
UniProt ID:	Q8K409
Cytogenetics:	8 11.42 cM
Gene Summary:	Repair polymerase that plays a key role in base-excision repair. Has 5'-deoxyribose-5-phosphate lyase (dRP lyase) activity that removes the 5' sugar phosphate and also acts as a DNA polymerase that adds one nucleotide to the 3' end of the arising single-nucleotide gap. Conducts 'gap-filling' DNA synthesis in a stepwise distributive fashion rather than in a processive fashion as for other DNA polymerases (By similarity).[UniProtKB/Swiss-Prot Function]