

## Product datasheet for **MG224685**

### Hmga1 (NM\_001166540) Mouse Tagged ORF Clone

#### Product data:

**Product Type:** Expression Plasmids  
**Product Name:** Hmga1 (NM\_001166540) Mouse Tagged ORF Clone  
**Tag:** TurboGFP  
**Symbol:** Hmga1  
**Synonyms:** AL023995; Hmg; HMG-I(Y; Hmga; Hmga1a; Hmga1b; Hmgj; HMGI(Y; Hmgjy; Hmgy  
**Mammalian Cell Selection:** Neomycin  
**Vector:** pCMV6-AC-GFP (PS100010)  
**E. coli Selection:** Ampicillin (100 ug/mL)  
**ORF Nucleotide Sequence:** >MG224685 representing NM\_001166540  
Red=Cloning site Blue=ORF Green=Tags(s)

TTTTGTAATACGACTCACTATAGGGCGCCGGGAATTCGTCGACTGGATCCGGTACCGAGGAGATCTGCC  
GCC**CGATCGCC**

ATGAGCGAGTCGGGCTCAAAGTCCAGCCAGCCCTGGCCTCCAAGCAGGAAAAGGATGGGACTGAGAAGC  
GAGGCCGGGCAGGCCACGCAAGCAGCCTCCGAAAGAGCCAGTGAAGTGCCAACTCCGAAGAGACCTCG  
GGGCCACCAAAGGGAAGCAAGAATAAGGGCGCCCAAGACCCGAAAGTCACCACAGCTCCAGGGAGG  
AAACCAAGGGCAGACCAAGAACTGGAGAAGGAGGAAGAGGGGCATCTCCAGGAGTCTCTGAGG  
AGGAGCAG

**ACGCGT**ACGCGGCCGCTCGAG - GFP Tag - GTTTAA

**Protein Sequence:** >MG224685 representing NM\_001166540  
Red=Cloning site Green=Tags(s)  
MSESGSKSSQPLASKQEKGTEKRGRGRPRKQPPKEPSEVPTPKRPRGRPKGSKNKGAATRKYVTTAPGR  
KPRGRPKKLEKEEEEIGISQESSEEEQ

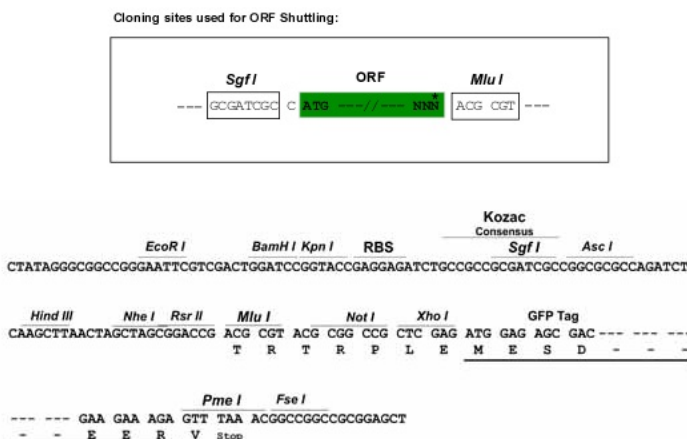
**TRTRPLE** - GFP Tag - V

**Restriction Sites:** Sgfl-MluI

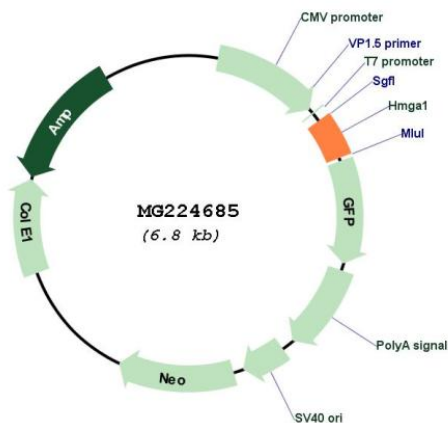


[View online »](#)

Cloning Scheme:



Plasmid Map:



ACCN:

NM\_001166540

ORF Size:

288 bp

OTI Disclaimer:

The molecular sequence of this clone aligns with the gene accession number as a point of reference only. However, individual transcript sequences of the same gene can differ through naturally occurring variations (e.g. polymorphisms), each with its own valid existence. This clone is substantially in agreement with the reference, but a complete review of all prevailing variants is recommended prior to use. [More info](#)

<b>OTI Annotation:</b>	This clone was engineered to express the complete ORF with an expression tag. Expression varies depending on the nature of the gene.
<b>Components:</b>	The ORF clone is ion-exchange column purified and shipped in a 2D barcoded Matrix tube containing 10ug of transfection-ready, dried plasmid DNA (reconstitute with 100 ul of water).
<b>Reconstitution Method:</b>	<ol style="list-style-type: none"><li>1. Centrifuge at 5,000xg for 5min.</li><li>2. Carefully open the tube and add 100ul of sterile water to dissolve the DNA.</li><li>3. Close the tube and incubate for 10 minutes at room temperature.</li><li>4. Briefly vortex the tube and then do a quick spin (less than 5000xg) to concentrate the liquid at the bottom.</li><li>5. Store the suspended plasmid at -20°C. The DNA is stable for at least one year from date of shipping when stored at -20°C.</li></ol>
<b>RefSeq:</b>	<u><a href="#">NM_001166540.1</a></u> , <u><a href="#">NP_001160012.1</a></u>
<b>RefSeq Size:</b>	1684 bp
<b>RefSeq ORF:</b>	291 bp
<b>Locus ID:</b>	15361
<b>UniProt ID:</b>	<u><a href="#">P17095</a></u>
<b>Cytogenetics:</b>	17 14.5 cM
<b>Gene Summary:</b>	This locus encodes a member of the nuclear, non-histone high mobility group protein family. This architectural transcription factor binds to A-T rich DNA sequences and participates in enhanceosome formation, chromatin remodeling and regulation of transcription. This protein functions in many cellular processes, including cell growth and differentiation. Alternatively spliced transcript variants have been described. [provided by RefSeq, Oct 2009]