

Product datasheet for **MG224637**

Lmtk2 (NM_001081109) Mouse Tagged ORF Clone

Product data:

Product Type:	Expression Plasmids
Product Name:	Lmtk2 (NM_001081109) Mouse Tagged ORF Clone
Tag:	TurboGFP
Symbol:	Lmtk2
Synonyms:	2900041G10Rik; A330101P12Rik; aatyk2; BREK; cprk; KPI-2; KPI2
Mammalian Cell Selection:	Neomycin
Vector:	pCMV6-AC-GFP (PS100010)
E. coli Selection:	Ampicillin (100 ug/mL)
ORF Nucleotide Sequence:	>MG224637 representing NM_001081109 Red=Cloning site Blue=ORF Green=Tags(s)

TTTTGTAATACGACTCACTATAGGGCGGCCGGAATTCGTCGACTGGATCCGGTACCGAGGAGATCTGCC
GCC**CGATCGCC**

ATGCCGGGGCCGGCGCTCGCCGCCGCCGATGCTCCTGCTGCTCCTGCTCCTGACGGTCGGCTGTG
CCCGGGCCCGCCACTTCCGCAAACAGGTGCAGGGGAAGTACCTGTTGTAGAAGTCCCTCCTGTTTGT
GATCCTGTCGGTGTGCAGTTTATTGATACTGATAGTGTTAATTGCAAAGTGTGTTTCTGCTGTAAGGAC
CCAGAAATAGACTTTAAGGAATTTGAAGACAATTTTATGATGATGAGATAGACTTCACCCACCAGCAGAAG
ACACCCCGTCCATCCAGTCCCGCAGAGGTCTTCACGCTCTCAGTGCCCAACATCTCACTCCAGCTCC
ATCCCAGTTCAGGCTTCTGTGGAAGGTTTGAAGTCTCAAGTCGCCGCCACAGTCTCAACTACATACAG
GAGATCGGGAGTGGCTGGTTTGGAAAGGTCCTCCTGGGAGAGACTTACACAGGCACCAGCGTCGCGAGAG
TCATAGTGAAGGAGTTAAAAGTCAGTGCAAGCCCAAGGAGCAGGACACTTTCCTGAAGAGTGGAGAGCC
TTACTACATCCTCCAGCATCCAAATGTCCTCCAGTGTGTGGGACAGTGTGTGGAAGCCATCCCTACCTT
CTGGTGTGTTGAGTCTGCGACCTGGGTGACCTGAAGGCTTACCTGCACAATGAGCAAGAACAGTGGCGG
GTGATTCACAGACCATGCTGCTACAGAGGATGGCGTGTGAGATTGCCGCAGGGCTGGCAGCCATGCACAA
GCTGCACCTTTCTGCACAGTGTGCTGGCCCTGCGGAATTTATCTCACCTCCGACTTAAATGTCAAAGTG
GGTACTATGGAATAGGCTTACAGAGTACAAGGAGGATTACATTGAGACAGATGACAAGAAAGTTTTCC
CCCTGAGATGGACTGCTCCAGAATTAGTGACCAGCTTTCAAGACAGACTTTGACTGCAGATCAGACTAA
ATACAGTAATATCTGGTCTTAGGTGTAACACTTTGGAACTCTTCAACAATGCTGCTCAGCCGTATGCA
AACCTTTCTGACCTGGATGTCCTCAATCAAGTCATTTCGGGAGAGGGACATGAAGCTCCCAAAGCCGACG
TGGAGCAGCCGTAAGTACGATAGATGGTACGAAGTGTGCAAGTCTGCTGGCTGCCCTGACAAGAGGCC
AGCCGCAGAAGACGTGCACCGTCTGCTAACTTACCTGAGGATGCAGAGCCAGCGGGACTCGGAGGTGCAC
TTTGAACAGCAGTGGACTGCTCTCAAGCCCGACACCAACAGCAGGGACGCATCCAGCAGCGCTGCCTTCC
CCATCCTTGACCACTTCGCCCGGACCGGCTGGGTGGGAGATGGAGGAGTCTCACGGTGACGGAGAC
CAGCCAGGGCCTGAGCTTTGAGTATGTGTGGGAGGCTGCCAAGCAGCACCATTTTATGAGCAGGGCCGG



[View online >](#)

GGCCACCCAGATGAAGCCCTGTCTTACTCCAGCATGTTCTTCCCAGTGGAGGTGTTTGAGAATTCGCTTT
CAGATCCTGGCCCTGGCAAGCAAGATGACAGTGGCCAGGAGGTGCCCGTGAGGGCCCTGGGGTGGTTCC
TGTGTTTGATGCACACAACCTCTCTGTTGGAAGTGACTACTACATCCAGCTGGAGGAGAAAAGCAGCAGC
AATCTGGGACTGGACCCCTGCACTGCTCACAAGTGAAGTAGATAAGCTAGAGAGGGCTGGGGCTGAGG
AACCCAGGACAGAAGAGGATTTCTTCCAGAGCAGTGTCCACCCAAAGAAGCCAGCTCTACCGAGGACTC
ACGTGCTACCAGCATCCCTGGGAGCCCTTCAACCTATTTAGTGACCTTGACAAAAGCAGATGACCTGCC
AGTCACCAAAAAATATTTGATCTAATGGAACATAATGGAGTTCAAGCTGACTTTAAGCCAGCCATTTGA
GTTCAAGCCTGGATGACCCCAAGGACACCTGCCAGTCTGACAAAAGAAAAGCCCATAAAGCTCTTGACCA
GGCCCTCTGTGCTTATCAGAAAGCCTTTTGCACCAAGATCACTTTGATCCACTGAGTGTCCAAGAATTG
TCAGAAAATTTTTATTTCTTCCAGGAGAAAAATCTACTGAAAGGCTCTCTGACTACCAAGGAGCAAGTGA
GCGACCTTCAAACAGAAGTCAAGAATGCAGGTTTTACCTCAGCACTGTTGGAGTCAACCCAGAGAGGCTC
TGAAAGTTCTGAACTTGAGTTCCTGAAAATACACTAGACTTTCCCTTGTACAGGGAGACACGCGTGGA
CAGAATGAAGGTGCAGGTGTCCAGCGTCACAGTGGTACCTCACCACAGGCCTCCCAGCCTTGCTCAGAG
AAGAAGGATCTCCTACTGCCCCACAGACCCAATTCTGAAGCCAGAAGAAACCAATCCTTTAGAGATGT
CAGAGTCCCCGAGGACTCCATCTGCTTGGAGCTAGGCCCGACCCCGTACTGTTGGAGTTGAAATTCCT
GCTACTGATGCCAAAACCTCGATGGGGCAACAGACCCCAAGCAGTCACTTGCCAAAGCAAGGAGGCC
TGAGTCTAACCAACAGACACCCATCCTTGTGAATGATATTACTGCTCAGGGTAGCGTGGAGAGTTGCT
TCCAGAATCGAGACAGGATTTACAAAATGAGCCATTTTTCAGAAGACCCTCTTAGTGTCAGCTCACTGGAG
AAACACTCGGAAGCTGCGGAGACTTTAAACCAGCTTAACTCTAAGGCTGCCCCGGAGGATGCAGCCTTGG
CGTCTGCCCTCTCCTCGGATTCTACCAGCAAGATAGCCTCTTAGAAGACAGTTTGTCAACCCATCCC
CACCTCAGAGCAGTCTGTGGAGACGCCAGACTCCCTGGATTCAAGTGGATGTCGTAAGCATTGCTAGAG
TCCCTAGGCTCCACACCCCTCGGAACTCTTGCCTCCGATAAGCCTGCCGACAGCGGCTATGAGACGG
AGAACCTGGAATCTCCTGAGTGGACCCTGCACCCTGCACCCGAAGGCAGTCTGACTCAGACAGCAGTGC
AGCAGGTGACAGTGGCCACAGCAGTTCCTCCCAACCCGGTCATTGTCATCTCGGATGCAGGCGATGGC
CACAGAGGTGCTGAAGGTCTCCTCAGAGCTTCAACTTGGCCCCAGAGTTCATATCGAGACTCTGCAT
ACTTCTCAGACAATGACTCGGAGCCAGATAAAAAGCCCGAGGAGGTCCCAGGAACATCTGCCAATGCCCT
GGTGTGGTAAAGGGCCAGTCCCCACCTGAGTCAGTTGTCCAGAAGAAAGCTCTGATGTCAGAGAAGGC
TGCCTGGAAGCCACAGGACAAGCCAGATCAAAGTGGGTGTCTACTTTGCAGAATTCTTGTCACTCAG
AACTACAAGAAACATTGCAGCCACACCAGCTGATGCTTCCAGAGAGTCTGTCTGTGAACGACGAGGC
CAGCAGCCCTTGAGTTTGTGAATTGAGAACCTAGCAGCTGCGATGACCTGGACACACAGGAAGATCGC
CCATGCACCCTGGCCTCCACAGGTACAATAACCAATGAACTCCTTGCATACATGAGTTCCCACTGGATA
AATCTTTGCCAGCCACTTGGAGAGCTCCAAGCTGAAGGAGCCAGACATTGAAGGGAAATACCTTGCAA
ACTTTGTGTGCTGGGATGCTGGACCTCTCGGAGGATGGGATGGATGCCGATGAGGAGGATGAGAACAGC
GACGACTCGGACGAGGACCTTCGAGCCTTCAACTTGCACAGCCTAAGCTCTGAGTCTGAAGACGACACGG
AGCACCCTGTGCCATCATTGTGAGTAAAGATGATGGTAGGCACCTGCGGAGTTTGTGAAACCCCTCAGC
TGCCGAGGCCATTGAGCAGTGGCGAAGACTGGAAGAAGGAAAAGAAGGCAGTGAATTTTCGATGAT
GTCACCGTTTATCTGTTGACCAGGAAACCCCAACAAAGACTGGGGCACTGCGGGGAGAAAGCACATG
GCCCTGGGCCAGCAGCCAGCAGCGTCTCAAGTTCCCCTACCTAGGGAGTGCATGAATTCGAAAG
TTCCACGGATGAAGAAGGCGGAGGCTTTGAATGGGACGATGACTTCTCCCGACCCTTTCATGTCAAAG
ACAACAAGCCTTCTGGTTCCAAGCCTTCTTCAAACCTCAAATACTTCTCTCCTCCCCACCGGCCA
GGAGCGCAGAGCAGAGTGGCCGACGTGTCCCTGCTCCCGTTCTCCATCTCTCCTGCCAACATTGC
CAGCTTCTCTCACACCTCACGGACTCAGACATTGAACAAGGAGGCAGCAGTGAAGACGGAGACAAG
GAC

AGCGGACCGACGCGTACGCGGCCGCTCGAG - GFP Tag - GTTTAA

Protein Sequence: >MG224637 representing NM_001081109
 Red=Cloning site Green=Tags(s)

```

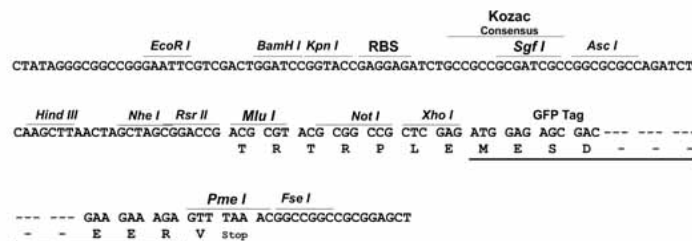
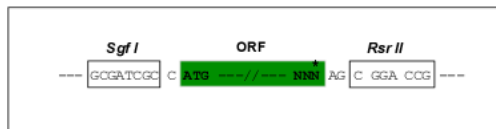
MPGPPASPPPMLLLLLLLLLVGCAARAAPLPQTGAGEVPVVEVPSL FVILSVCSLLILIVLIANCVSCCKD
PEIDFKEFEDNFDDEIDFTPPAEDTPSIQSPA EVFTLSVPNISLPAPSQFQASVEGLKKSQVARHSLNYIQ
EIGSGWFGKVLGETYTGTSVARVIVKELKVSASPKEQDTFLKSGEPYYILQHPNVLQCVGQCVEAIPYL
LVFEFCDLGDLKAYLHNEQEHVGRGDSQTMLLQRMACEIAAGLAAMHKLHFLHSDLALRNCYLTSDLNVK
VDYVIGFSGRYKEDIETDDKKVFLRWTAPELVTSFQDRLLTADQTKYSNIWSLGVTLWELFNNAQPYA
NLSDLVNLQVIRERDMKLPKPQLEQPYSDRWYEVLFQFVLPDPKRPAAEDVHRLLTLYLRMQSQRDSEVD
FEQQWTALKPDTNSRDASSAAFPILDHFAARDLGREMEEVLTVTETSQGLSFEYVWEAAKHDFDEQGR
GHPDEALSYSSMFFPVEVFENSLSDPGPGKQDDSGQEVVVRAPGVVVFDAHNLSVGSYYIQLEEKSSS
NLGLDPPALLTTEVDKLERAGAEERTEEDFFQSSAHPKEASSTEDSRATSI PGSPFNLFSDLDKADDLP
SHQKIFDLMELNGVQADFKA I LSSSLDDPKDTCQSDKEKPHKLLDQGPLCLSESL LHQDHFDP LSVQEL
SENF LFLQEKNLK GSLTTKEQVSDLQTE LKNAGFTSALLESPQRGSESELEFLENTLDFPLSQGDTRG
QNEGAGVRRHSGTSPQAS PALLTEEGSPTAPTDPILKPEETKSFDRVVRPEDSICLELGPDPVTVGVEIP
ATDAKTL DGGNRPPDVT CQSKEALSLTNRHPILVNDIT AQGSVE SCLPESRQDLQNEPFS EDPLSVSSLE
KHSEAAETLNQLNSKAAPEDAALASALSSDSTSQDSLLED SLSTPIPTSEQSVETPDSLDSVDVREALLE
SLGSHTPRKL LPPDKPADSGYETENLESPEWTLHPAPEGTADSDAAAAGDSGHSSLPNPVIVISDAGDG
HRGAEGPPQSFTLGPQSSYRDSAYFSDNDSEPDKKPEEVPGTSANALVLVKGQSPPE SVVPEESSD VREG
CLEAPQDKPDQSRVSTLQNSCHSELQETLQPTPADASRESCPVNDEASSPLSLLNSEPSSCDDLDTQEDR
PCTLASTGTNTNELLAYMSSTLDKSLPSHLESSK LKEPDIEGKYL GKLCVSGMLDLSEDGMDADEEDENS
DSDDEDLRAFNLHSLSSESEDDTEHPVPIIVSND DGRHLRSL LKPSAAEAIEQLPEDWKKKKA VTFDD
VTVYLFQDET PKELGHC GGEAHGPGPSSPAASSSSPYLGRCMNSE SSTDEEGGF EWDDDFSPDPFMSK
TTSLLGSKPSLQTSKYFSPPPP ARSAEQSWPHVSPCSRFSISP ANIASFSLTHL TDSIDIEQGSSEDDGDK
D
    
```

SGPTRRRLE - GFP Tag - V

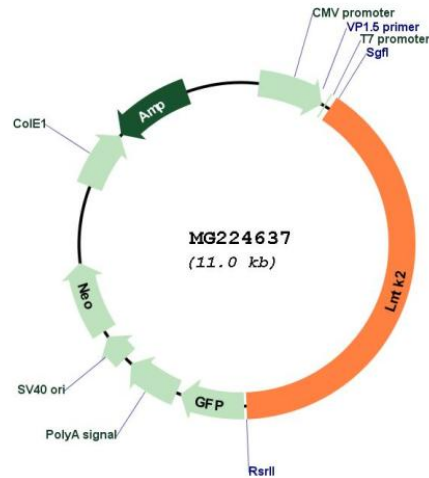
Restriction Sites: SgfI-RsrII

Cloning Scheme:

Cloning sites used for ORF Shuttling:



Plasmid Map:



ACCN: NM_001081109

ORF Size: 4413 bp

OTI Disclaimer: The molecular sequence of this clone aligns with the gene accession number as a point of reference only. However, individual transcript sequences of the same gene can differ through naturally occurring variations (e.g. polymorphisms), each with its own valid existence. This clone is substantially in agreement with the reference, but a complete review of all prevailing variants is recommended prior to use. [More info](#)

OTI Annotation: This clone was engineered to express the complete ORF with an expression tag. Expression varies depending on the nature of the gene.

Components: The ORF clone is ion-exchange column purified and shipped in a 2D barcoded Matrix tube containing 10ug of transfection-ready, dried plasmid DNA (reconstitute with 100 ul of water).

Reconstitution Method:

1. Centrifuge at 5,000xg for 5min.
2. Carefully open the tube and add 100ul of sterile water to dissolve the DNA.
3. Close the tube and incubate for 10 minutes at room temperature.
4. Briefly vortex the tube and then do a quick spin (less than 5000xg) to concentrate the liquid at the bottom.
5. Store the suspended plasmid at -20°C. The DNA is stable for at least one year from date of shipping when stored at -20°C.

RefSeq: [NM_001081109.2](#)

RefSeq Size: 8114 bp

RefSeq ORF: 4416 bp

Locus ID: 231876

UniProt ID: [Q3TYD6](#)

Cytogenetics: 5 G2

Gene Summary: Phosphorylates PPP1C, phosphorylase b and CFTR.[UniProtKB/Swiss-Prot Function]