

Product datasheet for **MG224628**

Slc18a2 (NM_172523) Mouse Tagged ORF Clone

Product data:

Product Type:	Expression Plasmids
Product Name:	Slc18a2 (NM_172523) Mouse Tagged ORF Clone
Tag:	TurboGFP
Symbol:	Slc18a2
Synonyms:	1110037L13Rik; 9330105E13; Vmat2
Mammalian Cell Selection:	Neomycin
Vector:	pCMV6-AC-GFP (PS100010)
E. coli Selection:	Ampicillin (100 ug/mL)



[View online »](#)

ORF Nucleotide Sequence:

>MG224628 representing NM_172523
 Red=Cloning site Blue=ORF Green=Tags(s)

TTTTGTAATACGACTCACTATAGGGCGGCCGGAATTCGTCGACTGGATCCGGTACCGAGGAGATCTGCC
 GCC**CGGATCGCC**

ATGGCCCTGAGCGATCTGGTCTGCTGCGATGGCTGCGGGACAGCCGCACTCGCGCAAGCTGATCCTGT
 TCATCGTGTTCCTCGCGCTGCTGTAGACAACATGCTGCTCACCGTCGTAGTTCCCATCATTCCCAGCTA
 CCTGTACAGCATTAAAGCACGAGAAAAATACTACGGAAATCCAGACTGCCAGGCCAGCGCTCACAGCCTCC
 ACTTCCGAAAGCTTCCACAGCATCTTCTTACTATAACAACCTACTGTGTTACGCGGGAATGCCACGG
 GGGGCTCCCAGGAGGGAGTACCCCAAGGCTACCACCACACAGCACACTGTGACCAACAGACTGTCCC
 TCCCGACTGCCCCAGTGAAGACAAAGACCTTCTAAATGAGAATGTGCAAGTTGGGCTGCTGTTTGCCTCC
 AAAGCCACTGTCCAGCTCCTACCAACCCATTCATAGGACTTCTAACCAACAGAATTGGCTATCCAATTC
 CCATGTTTCTGGATTCTGCATTATGTTTATCTCAACAGTTATGTTTGCCTTCTCCAGCAGCTATGCCTT
 CCTGCTGATCGCCAGGTCCTGCAGGGAATCGGCTCCTTTGCTCATCTGTGGCTGGGATGGGCATGCTG
 GCCAGCGTGTACAGATGATGAAGAGAGGGGTAAACCCATGGGGATTGCTCTGGGGGCGCTGGCCATGG
 GGGTCTTAGTGGGACCCCTTTGGAAGTGTGCTCTATGAGTTTGTGGGGAAGACAGCTCCTTTCCTGGT
 GCTTGCTGCCTTGGTCTTGGATGGAGCTATTCAGCTCTTGTGCTCCAGCCATCCCAGTGCAGCCA
 GAAAGTCAGAAGGGGACACCTCTTACGACCTTGTGAAGACCCATACATTCTCATCGCTGCAGGCTCCA
 TCTGCTTTGCAACATGGGGATAGCCATGCTGGAGCCCGCCCTGCCCATCTGGATGATGGAGACCATGTG
 TTTCCGAAAGTGGCAGCTGGGCGTTGCCTTCTGCCAGCGAGCATCTCTATCTCATTGGAACCAATATT
 TTTGGGATACTTGACACAAAAATGGGAAGTGGCTGTGTGCTCTCTGGGAATGATAGTTGTTGGGATCA
 GCATTTTATGTATTCCTTTTGCAAAAAATATCTACGGACTCATCGCTCCCACTTTGGAGTTGGTTTTC
 CATTGGGATGGTGGACTCCTCCATGATGCCTATCATGGGCTACCTGGTGGACCTGCGGCACGTGTCTGTC
 TATGGGAGTGTGTATGCCATTGCAGATGTAGCCTTCTGCATGGGGTATGCTATCGGTCCCTCTGCTGGT
 GTGCTATTGCAAAGGCAATTGGCTTTCCTTGGCTCATGACAATTATTGGGATAATTGATATTGTTTTTGC
 TCCACTCTGCTTTTTTCTCGAAGTCCACCTGCTAAGGAAGAAAAATGGCTATCCTCATGGACCACAAC
 TGCCCCATTAAGACAAAGATGTACACTCAGAATAATGTCCAGCCGTAACCCGTCGGTGATGATGAAGAT
 CTGAGAGTGAC

ACGCGTACGCGGCCGCTCGAG - GFP Tag - GTTTAA

Protein Sequence:

>MG224628 representing NM_172523
 Red=Cloning site Green=Tags(s)

MALSDLVLLRDLRDRSRKLIILFIVFLALLLDNMLLTVVPIIPSYLYSIKHEKNTTEIQTARPALTAS
 TSESFHSIFSYYNNSTVFTGNATGGLPGGESPKATTTQHTVTNTTVPDCPSEDKDLLNENVQVGLLFAS
 KATVQLLTNPFIGLLTNRIGYIPMFAGFCIMFISTVMFAFSSSYAFLLIARSLQIGSSCSSVAGMGL
 ASVYTDDEERGNAMGIALGGLAMGVLVGPFFGSVLYEFVGKTAFLVLAALVLLDGAIQFLVLPQSRVQP
 ESQKGTPLTLLKDPYILIAAGSICFANMGIAMLEPALPIWMMETMCSRKWLGVAFPLPASISYLIQTNL
 FGI LAHKMGRWLCALLGMIVVGISILCIPFAKNIYGLIAPNFGVGFAGMVDSSMMPIMGYLVDLRHVSV
 YGSVYAIADVAFCMGYAIGPSAGGAIKAIIGFPWLMIIIGIIDIIVFAPLFFLRSPPAKEEKMAILMDHN
 CPIKTKMYTQNNVQYPYVGDDEESES

TRTRPLE - GFP Tag - V

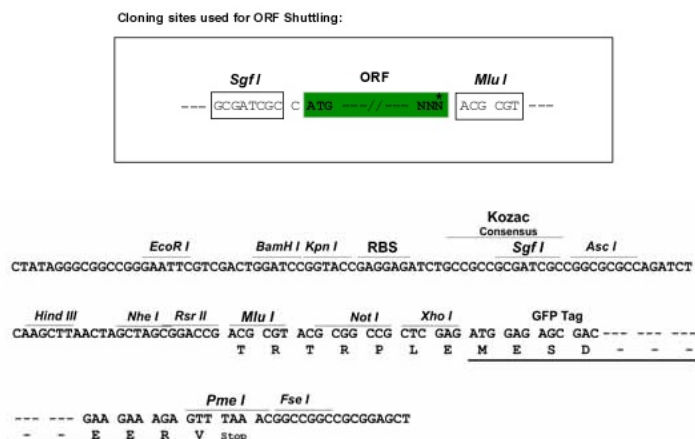
Chromatograms:

https://cdn.origene.com/chromatograms/ja1256_b10.zip

Restriction Sites:

Sgfl-Mlul

Cloning Scheme:



ACCN: NM_172523

ORF Size: 1551 bp

OTI Disclaimer: The molecular sequence of this clone aligns with the gene accession number as a point of reference only. However, individual transcript sequences of the same gene can differ through naturally occurring variations (e.g. polymorphisms), each with its own valid existence. This clone is substantially in agreement with the reference, but a complete review of all prevailing variants is recommended prior to use. [More info](#)

OTI Annotation: This clone was engineered to express the complete ORF with an expression tag. Expression varies depending on the nature of the gene.

Components: The ORF clone is ion-exchange column purified and shipped in a 2D barcoded Matrix tube containing 10ug of transfection-ready, dried plasmid DNA (reconstitute with 100 ul of water).

Reconstitution Method:

1. Centrifuge at 5,000xg for 5min.
2. Carefully open the tube and add 100ul of sterile water to dissolve the DNA.
3. Close the tube and incubate for 10 minutes at room temperature.
4. Briefly vortex the tube and then do a quick spin (less than 5000xg) to concentrate the liquid at the bottom.
5. Store the suspended plasmid at -20°C. The DNA is stable for at least one year from date of shipping when stored at -20°C.

RefSeq: [NM_172523.3](#), [NP_766111.1](#)

RefSeq Size: 3803 bp

RefSeq ORF: 1554 bp

Locus ID: 214084

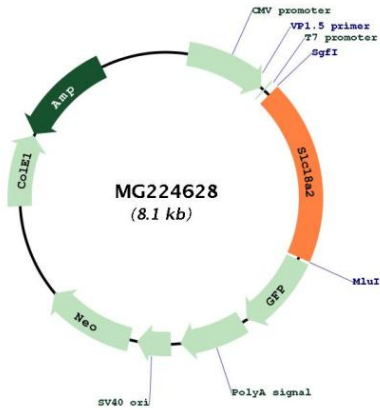
UniProt ID: [Q8BRU6](#)

Cytogenetics: 19 54.64 cM

Gene Summary:

Involved in the ATP-dependent vesicular transport of biogenic amine neurotransmitters. Pumps cytosolic monoamines including dopamine, norepinephrine, serotonin, and histamine into synaptic vesicles. Requisite for vesicular amine storage prior to secretion via exocytosis (By similarity).[UniProtKB/Swiss-Prot Function]

Product images:



Circular map for MG224628