

Product datasheet for **MG224624**

Zfp750 (NM_178763) Mouse Tagged ORF Clone

Product data:

Product Type:	Expression Plasmids
Product Name:	Zfp750 (NM_178763) Mouse Tagged ORF Clone
Tag:	TurboGFP
Symbol:	Zfp750
Synonyms:	A030007D23Rik; Znf750
Mammalian Cell Selection:	Neomycin
Vector:	pCMV6-AC-GFP (PS100010)
E. coli Selection:	Ampicillin (100 ug/mL)



[View online »](#)

ORF Nucleotide Sequence:

>MG224624 representing NM_178763
 Red=Cloning site Blue=ORF Green=Tags(s)

TTTTGTAATACGACTCACTATAGGGCGGCCGGGAATTCGTCGACTGGATCCGGTACCGAGGAGATCTGCC
 GCC**CGGATCGCC**

ATGAGTCTCTAAAGGAACGGAAACCAAAAAAGCCACACTATATTCACGGCCCCAGGAAAGCCCTTCA
 AGTACAAATGCTTCCAGTGTCTTTTACATGTAACGAGAAGTCACATCTTTTCAATCACATGAAGTACGG
 TCTCTGTAAAACTCCATTACTTTAGTGTGAGCAAGATCGTATTCCCAAGTGTCCAAATCTAGCTCG
 CTGGATCCTAAGCAGACCCACCAGCCAGAGCCACCTCAAAGCCAGCCACTTCCAAATCTCTCTAAATG
 GACTCTCCAGCTTTGATCCAAAGTCTCAACAGGGCTCTGCAAAGGAGGATGCCAAAGAGAACCTAGAAAT
 GCAGGCTCGGGGAGCCCAAAAGTCCCGAAGCCAGCCCTACAGAAAGAAATGGCACCAGAAGCCATT
 CTCAGCACCCAGCCCTGCCTCGACAGTGGGGTTAGACATTCAGCATTGTTCAGTTGGGGAACACAGAC
 TTAGGGGGCCAGAAGATACAGAGGCCACTGAAGTCTGGCCAACCTACCACCAAAGCCCTCTCATTCCA
 TGCCAAGTCTGCATTCCACACGCCGGTTACCCCTGAAAAGCTGGCTCCCATTCTCCCTCTGACTTT
 CCACATAAAATCTCTCTACAAAGGGGTTTGGTGCATCTCCCCCTATATGCATCCTGCAATCCCGGAGT
 ACCCCCATCCCTTCTACGCAGAGCATGGGCTGGCTGCCATCTACTCCCCCTACCTCTGACTGGGAACAC
 GCCTGAGTGTGAGACCACTTTGCTGTCTGTCTATGGGACCCAAGACCAAAGACACTTCTGTCTCTGCT
 GGGCCAATCCCAAGCACTTGAACACATCCCCATCAACATATGACCACTACAGATTTTTCCAGCAGTACC
 ACTCTAATCTGCCGATCCCTTATGGGTTTTACAGACCAGAGTCTGCATTTCCCTCTACAGTCTCAGGCT
 CCCATCTGTCACTGGCATCACCCGAGATCAGAGCTCTCGTTGCTTGAAGATGCAACCCTGGCTTACCCA
 GCCTCAAGTCCCTCAGAGTTAAACCTTTCAAGCTCCCACAGGAAACACACAGAGTGTGAGAAGGGAAGTC
 CAGTTCCTGAGGCTAAAGATCCTTCTAAAGATGGGCAAGGGATGCAGAAGAAGCCAAATGAGCCCCCG
 AGCAGGGAGCGCTGCCACGGGCTCCCCGGGAGGCCAAGCCCCACCAACTTCACCCAAACAAGCCAAACA
 TTCGAAGGCCTGTGTGACCTCTCAAACAAGCAGCCTCCTCCGGAACCCTAGAGCGACTCCAGCAAGCTG
 AGCAGAGCCCCACCGCTTCAAACCTGTCCAGAGGGGTTGAGAAAGCCCTCACTCTCAACCTCTGCAAA
 CAGAACAGAGTCTCAAAAAGCCTTCCAGGCCATGAATGGTACCCTCCGGCCAGACAGGGAGCAGTAAC
 TCTTTCATCACAGAGGCCCCACCCTCCAGCCCAGAGGACCACTCCAGAATAGGTCCTCAATCTCTCTA
 AGAAGCTGGAGACAAACCCTGCAGCCACGTATGGACCATGTATGCAAGCAACGCCAGGCAGACACTCT
 GCAAGACCTGCCACTCAATCTGTCCGTGAAGGATCTCTGCAACGCCTGGGCTCCAAGGCCTGCCCTCCA
 GGCCACCACAAGGTGCAGAACCCGCTGCCACTCAAAGACTGAGACAAAGGGTTCTGAAGATAGGACAA
 GCCGCGTGGAGACACCACAAGACAAGGCCACAGCAGGACAACCCAGAGGTGCACACGGAGGACAGCAG
 TGATGAACAGAAGCAGACGGCAGCTGTAGCTCTGTGACGCTGGCGGCCTACAGCCCAGGGAACGTCGGA
 GTGGCCGATGAGGAAGGCACAGCCAGGAACCCACCCGTCAGGATGTGCCACCCCTCAGTGTACAGAGA
 ACCTGGAGGCTCAGTGTGACCTCAGACCCAAAGGACAAAAGAGGACAAGTCAAAGGGACACAGGAAAATC
 CCAGCAAGGAACATAAAAGCCAAAGCTGAATGACCCCGTCCCAAGAGTGCTTACTCTCCGCAGAAGAACC
 CGGGTATCC

ACGCGTACGCGGCCGCTCGAG - GFP Tag - GTTTAA

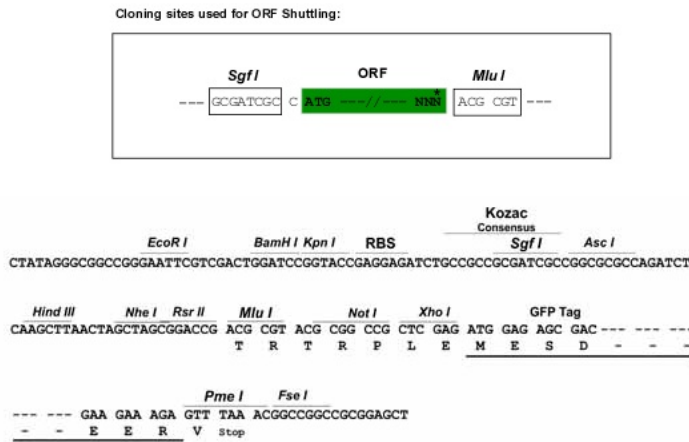
Protein Sequence: >MG224624 representing NM_178763
 Red=Cloning site Green=Tags(s)

```
MSLLKERKPKPHYIPRPPGKPFKYKCFQCPFTCNEKSHLFNHMKYGLCKNSITLVSEQDRIPKCPKSSS
LDPKQTHQPEPTSKPATSKSLLNGLSSFDPKSQQGSAKEDAKENLEMQARGAHKGPQKPALQKEMAPEAI
LSTQPCLDSGVRHSFVVPVGEHRLRGPEDTEATEVLANSSTKASSFHAKSAFHTPGYPWKAGSPFLPPDF
PHKISSTKGFAGAI SPYMHPAIP EYPHPFYAEHGLAAIYSPYLLTGNTPECETLLLSVYGTQDRHFLSPA
GP I PKHLNTSPSTYDHYRFFQYHSNLP I PYGFYRPESAFPSYSLRRLPSVTGITRDQSSRLLEDATLAYP
ASSPSELNLSSSH RKHTECEKGSVPVEAKDPSKDGQRDAEEAKMSPRAGSAATGSPGRPSPTNFTQTSQT
FEGLCDL SNKAASSGTLERLQQAEQSPTAFKPVQRGSESPHSQPPANRTE SPKSLQAMNGDPPAQTGSSN
SF I TEAPPSSPEDHSRIGPLNLSKKLETPAATYGP MYASNAQADTLQDLPLNLSVKDL CNAWAPRALP
GPPQGAEP AATPKTETK GSEDRTSRVETPQDKAHSRTTPDVHTEDSSDEQKQTA AVALCQLAAYSPGNVR
VADEEGTAQEPTRQDVPTLSATENLEAQCDLRPKGQKRTSQRDTGKSQQGTKKPKLNDPVPRVLT LRRRT
RVS
```

TRTRPLE - GFP Tag - V

Restriction Sites: SgfI-MluI

Cloning Scheme:

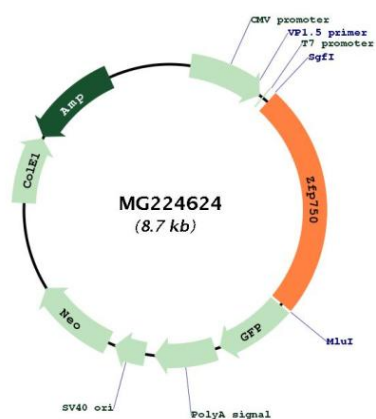


ACCN: NM_178763

ORF Size: 2109 bp

OTI Disclaimer:	<p>Due to the inherent nature of this plasmid, standard methods to replicate additional amounts of DNA in E. coli are highly likely to result in mutations and/or rearrangements. Therefore, OriGene does not guarantee the capability to replicate this plasmid DNA. Additional amounts of DNA can be purchased from OriGene with batch-specific, full-sequence verification at a reduced cost. Please contact our customer care team at custsupport@origene.com or by calling 301.340.3188 option 3 for pricing and delivery.</p> <p>The molecular sequence of this clone aligns with the gene accession number as a point of reference only. However, individual transcript sequences of the same gene can differ through naturally occurring variations (e.g. polymorphisms), each with its own valid existence. This clone is substantially in agreement with the reference, but a complete review of all prevailing variants is recommended prior to use. More info</p>
OTI Annotation:	This clone was engineered to express the complete ORF with an expression tag. Expression varies depending on the nature of the gene.
Components:	The ORF clone is ion-exchange column purified and shipped in a 2D barcoded Matrix tube containing 10ug of transfection-ready, dried plasmid DNA (reconstitute with 100 ul of water).
Reconstitution Method:	<ol style="list-style-type: none"> 1. Centrifuge at 5,000xg for 5min. 2. Carefully open the tube and add 100ul of sterile water to dissolve the DNA. 3. Close the tube and incubate for 10 minutes at room temperature. 4. Briefly vortex the tube and then do a quick spin (less than 5000xg) to concentrate the liquid at the bottom. 5. Store the suspended plasmid at -20°C. The DNA is stable for at least one year from date of shipping when stored at -20°C.
RefSeq:	NM_178763.4 , NP_848878.1
RefSeq Size:	3254 bp
RefSeq ORF:	2112 bp
Locus ID:	319530
UniProt ID:	Q8BH05
Cytogenetics:	11 E2
Gene Summary:	Transcription factor involved in epidermis differentiation. Required for terminal epidermal differentiation; acts downstream of p63/TP63 and activates expression of late epidermal differentiation genes. Specifically binds to the promoter of KLF4 and promotes its expression (By similarity).[UniProtKB/Swiss-Prot Function]

Product images:



Circular map for MG224624