

Product datasheet for **MG224616**

Lsr (NM_001164184) Mouse Tagged ORF Clone

Product data:

Product Type:	Expression Plasmids
Product Name:	Lsr (NM_001164184) Mouse Tagged ORF Clone
Tag:	TurboGFP
Symbol:	Lsr
Synonyms:	ILDR3; Lisch7
Mammalian Cell Selection:	Neomycin
Vector:	pCMV6-AC-GFP (PS100010)
E. coli Selection:	Ampicillin (100 ug/mL)



[View online »](#)

ORF Nucleotide Sequence:

>MG224616 representing NM_001164184
 Red=Cloning site Blue=ORF Green=Tags(s)

TTTTGTAATACGACTCACTATAGGGCGGCCGGAATTCGTCGACTGGATCCGGTACCGAGGAGATCTGCC
 GCC**CGGATCGCC**

ATGGCGCCGGCGCCAGCGCGTGTGCTGGGGCGCCTGGCTCCACCCGGCCACCAGATCTTCGTGTGTC
 TTTTCTCATCTTTACTGCCAGACCGTGCCAGTGCCATCCAGGTGACCGTGCCTGACCCCTACCACGT
 AGTGATCTGTTCCAGCCAGTGACACTACACTGCACCTACCAGATGAGCAATACCCTCACAGCCCCTATC
 GTGATCTGGAAGTATAAGTCGTTCTGTGCGGACCGTGTGCCGACGCCTTCTCCCCTGCCAGCGTGGACA
 ACCAGCTCAACGCCAGCTGGCGGTGGCAACCCCGGCTACAACCCCTATGTGGAGTGCCAGGACAGCGT
 ACGCACTGTCAGGGTGGTGGCCACCAACAGGGCAATGCTGTGACCCTGGGAGACTACTACCAGGGCAGG
 AGAATCACCATCACAGGAAATGCTGACCTGACCTTCGAGCAGACGGCCTGGGAGACAGTGGAGTGTATT
 ACTGCTCCGTGGTCTCAGCCAAGATCTGGATGGGAACAACGAGGCGTACGCAGAGCTCATTGTCCTTGA
 TTGGCTCTTTGTGGTCTGCTGCTGCCTGGCAAGCCTCCTTCTTCTCCTCCTGGGCATCTGCTGGTGC
 CAGTGCTGTCCACACCTGCTGCTGCTATGTCAGATGTCCTGCTGCCAGACAAGTGCTGTTGCCTG
 AGGCCCTTATGCTGCTGGCAAAGCAGCCACCTCAGGTGTGCCAAGCATCTATGCCCCAGCATCTATAC
 CCACCTCTCCTGCCAAGACTCCGCCACCTCCGCCTGCCATGATTCCCATGCGTCTCCCTATGGGTAC
 CCTGGAGACTTTGACAGGACCAGCTCAGTTGGTGGCCACAGCTCCAGGTGCCCTGCTGCGTGAAGTGG
 ATGGGAGCGTATCTTCAGAAGTACGAAGTGGCTACAGGATCCAGGCTAACAGCAAGATGACTCCATGAG
 GGTCTATACTATATGGAGAAGGAGTAGCCAACCTCCATGAAGATGACTGGCGATCTCGGCATCCAGGGCTC
 GTGCCCTCACACCCATCAGGGATGAGGAGTGAATCGCCACTCCCCTCGGAGTCCAGAACATGGGAGCA
 GGAACCCCTTCAAGAACAGCCAAGGGTGGTGGGGTCTGGGCGCCTCGGGCCCGCTCTGTGGATGCT
 CTAGATGACATCAACCGCCTGGCTCCACTGAATCAGGAAGTCTTCTCCCCAAGTAGTGGACGGAGAG
 GGCGGGCCTATGCACCTCCGAGAAGTCCGACCGGGATGACCTCTATGACCCCGACGATCTAGAGACTT
 GCCACATCCCGAGATCCCACTATTATGATGATTTGAGGTCTAGGGATCCACGTGCTGACCCAGATCC
 CGTCAGCGATCCACGATCCTCGGGATGCTGGCTTACAGTACAGGGACCCCTCAGTATGATGGGCGACTCT
 TAGAAGAGGCTTTAAAGAAAAAAGGGGCTGGGAGAGAAGACGCGTTTACAGGGAGGAAGAAGAAGA
 AGAGGAGGGCCACTATCCCCAGCACCTCCGCCTTACTCTGAGACTGACTCGCAGGCCTCGAGGGAGCGG
 AGGATGAAAAAGAATTTGGCCCTGAGTCGGGAAAGTTTAGTCGTC

AG**CGGACCG**ACGCGTACGCGGCCGCTCGAG - GFP Tag - GTTTAA

Protein Sequence:

>MG224616 representing NM_001164184
 Red=Cloning site Green=Tags(s)

MAPAASACAGAPGSHPATTFIVCLFLIIYCPDRASAIQVTVDPYHVIVLFPVTLHCTYQMSNTLTAPI
 VIWKYKSFCDRDRVADAFSPASVDNQLNAQLAAGNPGYNPYVEQCDSVRTVRVATKQGNVTLGDYYQGR
 RITITGNADLTFEQTAWGDSGVYYSVSAQDLNNEAYAEIIVLDWLFVVVCLASLLFFLLLGICWC
 QCCPHTCCCYVRCPCPKDCCPEALYAAGKAATSGVPSIYAPSIYTHLSPAKTPPPPPAMIPMRPPYGY
 PGDFDRTSSVGGHSSQVPLLREVDGVSSEVRSYRIQANQQDDSMRVLYYMEKELANFDPSRPGPPNGR
 VERAMSEVTSLHEDDWSRPSRAPALTPIRDEEWNRHSPRSPTWEQEPLQEQRGGWGSGRPRARSVDA
 LDDINRPGSTESGRSSPPSSGRRGRAYAPPRSRRDDL YDPDDPRDLPHSRDPHYDDLRSRDPADPRS
 RQRSHDPRDAGFRSRDPQYDGRLLLEALKKKGAGERRRVYREEEEEEGHYPPAPPYSETDSQASRER
 RMKKNLALSRESLVV

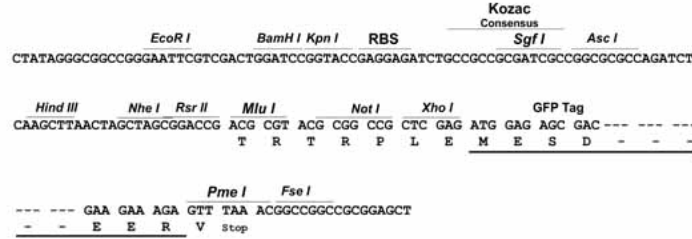
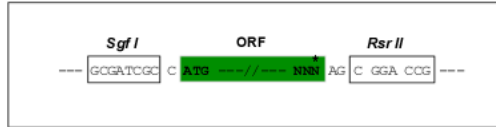
SGP**TRTRRLE** - GFP Tag - V

Restriction Sites:

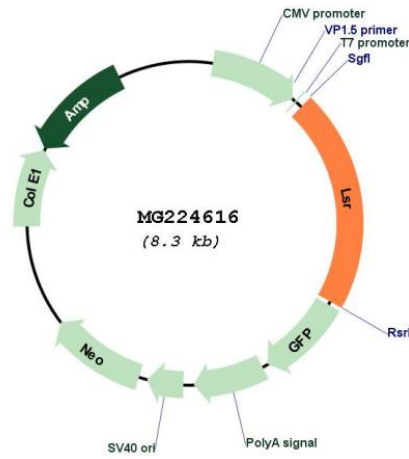
Sgfl-RsrII

Cloning Scheme:

Cloning sites used for ORF Shuttling:



Plasmid Map:



ACCN: NM_001164184

ORF Size: 1725 bp

OTI Disclaimer: Due to the inherent nature of this plasmid, standard methods to replicate additional amounts of DNA in E. coli are highly likely to result in mutations and/or rearrangements. Therefore, OriGene does not guarantee the capability to replicate this plasmid DNA. Additional amounts of DNA can be purchased from OriGene with batch-specific, full-sequence verification at a reduced cost. Please contact our customer care team at custsupport@origene.com or by calling 301.340.3188 option 3 for pricing and delivery.

The molecular sequence of this clone aligns with the gene accession number as a point of reference only. However, individual transcript sequences of the same gene can differ through naturally occurring variations (e.g. polymorphisms), each with its own valid existence. This clone is substantially in agreement with the reference, but a complete review of all prevailing variants is recommended prior to use. [More info](#)

OTI Annotation: This clone was engineered to express the complete ORF with an expression tag. Expression varies depending on the nature of the gene.

Components: The ORF clone is ion-exchange column purified and shipped in a 2D barcoded Matrix tube containing 10ug of transfection-ready, dried plasmid DNA (reconstitute with 100 ul of water).

Reconstitution Method:

1. Centrifuge at 5,000xg for 5min.
2. Carefully open the tube and add 100ul of sterile water to dissolve the DNA.
3. Close the tube and incubate for 10 minutes at room temperature.
4. Briefly vortex the tube and then do a quick spin (less than 5000xg) to concentrate the liquid at the bottom.
5. Store the suspended plasmid at -20°C. The DNA is stable for at least one year from date of shipping when stored at -20°C.

RefSeq: [NM_001164184.1](#), [NP_001157656.1](#)

RefSeq Size: 2120 bp

RefSeq ORF: 1728 bp

Locus ID: 54135

UniProt ID: [Q99KG5](#)

Cytogenetics: 7 B1

Gene Summary: Probable role in the clearance of triglyceride-rich lipoprotein from blood. Binds chylomicrons, LDL and VLDL in presence of free fatty acids and allows their subsequent uptake in the cells (By similarity).[UniProtKB/Swiss-Prot Function]