

## Product datasheet for **MG224591**

### **Ebf2 (NM\_010095) Mouse Tagged ORF Clone**

#### **Product data:**

Product Type:	Expression Plasmids
Product Name:	Ebf2 (NM_010095) Mouse Tagged ORF Clone
Tag:	TurboGFP
Symbol:	Ebf2
Synonyms:	D14Ggc1e; EBF-2; Mmot1; O/E-3; OE-3
Mammalian Cell Selection:	Neomycin
Vector:	pCMV6-AC-GFP (PS100010)
E. coli Selection:	Ampicillin (100 ug/mL)



[View online »](#)

**ORF Nucleotide Sequence:**

>MG224591 representing NM\_010095  
 Red=Cloning site Blue=ORF Green=Tags(s)

TTTTGTAATACGACTCACTATAGGGCGGCCGGAATTCGTCGACTGGATCCGGTACCGAGGAGATCTGCC  
 GCC**CGCATCGCC**

ATGTTTGGGATTCAAGATACGCTAGGAAGAGACCAGCTCTGAAAGACAAGTCGCTGGTGCCGAGATGG  
 ATTCGGTCAGGTCTGGGTCCGGAATGTCGGCGTGGTGGACGCCAATGTCGGCGCTCAGAGCGGAGTTGC  
 TCTGTCCCGGCCCATTTTAAAAAGCAACCTCCTTCAAACCTTGAGGAAATCCAACCTCTTTTCATTTTGT  
 CTGGCGCTCTACGACAGGCAGGGACAGCCGGTGGAGATTGAGCGCACAGCCTTCGTGGACTTTGTGGAGA  
 ATGACAAAAGAGCAAGGCAATGAGAAGACCAACAATGGTACTACTACAAGTTACAGCTCCTTTACAGCAA  
 CGGTGTCCGCACGGAGCAGGACCTGTATGTCAGGCTCATCGACTCTGTCACCAAACAGCCCATAGCCTAT  
 GAGGGACAGAATAAGAATCCCGAAATGTCAGAGTTCTGCTGACACAGAGGTGATGTGCAGTCGATGCT  
 GTGAGAAGAAGAGCTGCGGGAACCGGAACGAGACCCCTTCAGACCCGGTTCATCATCGACAGATTCTTTT  
 AAAATTTTCTGAAGTCAATCAGAATTGTTTAAAACAGCGGAAACCCAAGGGACATGAGGCGGTTT  
 CAGGTCGTGTTGCCACAACAGTAAATGTGGATGGACATGTGCTGGCTGTTTCTGACAACATGTTTGTTC  
 ATAACAATTCTAAGCATGGAAGGAGAGCAAGAAGGCTTGACCCATCTGAAGCTACACCCTGCATCAAAGC  
 CATCAGCCCAAGTGAAGGCTGGACCACAGGAGGGGCCATGGTCATCATCATTGGTGACAACCTTTTTTGT  
 GGTCTCCAGGTTGTGTTGGTACCATGCTTGTATGGAGTGAGCTCATAACCCCTCATGCCATCAGAGTAC  
 AGACCCCTCCCGGCATATCCCTGGAGTTGTGGAAGTGACACTATCTTATAAATCCAAACAGTTCTGCAA  
 AGGAGCCCCGGCAGGTTTCATCTACACAGCCTTAAATGAACCCACCATAGACTATGGCTTCCAAAGATTG  
 CAGAAAGTCATCCAAGGCACCCAGGTGACCTGAGAGGCTAGCTAAGGAAATGCTGTTGAAAAGAGCTG  
 CGGACCTGGTGAAGCCCTCTACGGCACACCACACAATAATCAGGACATCATTTTAAAGCTGCTGCAGA  
 CATTGCTGAAGCCCTGTACAGTGTCCCGGAAACCCAGCCAGATTCCAGCTCTTTCCAGCTCCCGAGCT  
 CACAGCGGTATGATGGGTATCAACTCTTACGGCAGCCAGCTCGGCGTCAGCATTTCAGAGTCCACACAAG  
 GAAATAACCAAGGATACATCCGCAACACAAGCAGCATCTCCCGCGGGGATACTCTCCAGCTCCACGCC  
 TCAGCAATCTAATTACAGCACCTCCAGCAACAGCATGAACGGCTACAGCAATGTTCTATGGCCAACCTG  
 GGTGTGCCAGGATCCCGGGATTCTGAATGGCTCACCCACGGGCTCCCATATGGAATCATGTCTTCAA  
 GCCCCACCGTGGGATCTCCAGCACGTCTCCATCCTCCCGTTCTCTCTCAGTTTTCTCTGCTGTCAA  
 ACAGAAGAGTGCCTTTGCCCTGTATCAGGCCCAAGGCTCCCATCGCTGCCTGCTCCAGCGGCAAT  
 GGAACGGATTACAGCCATGACAGGACTTGTGTTCCCCGATG

**ACGCGTACGCGGCCGCTCGAG - GFP Tag - GTTTAA**

**Protein Sequence:**

>MG224591 representing NM\_010095  
 Red=Cloning site Green=Tags(s)

MFGIQDTLGRGPALKDKSLGAEMDSVRSWVRNVGVVDANVAAQSGVALSRAHFEKQPPSNLRKSNFFHFV  
 LALYDRQGQPVEIERTAFVDFVENDKEQNEKTNNGTHYKQLLYSNGVRTEQDLVYRLIDSVTKQPIAY  
 EGQNKNPMECRVLLTHEVMCSRCEKKSNGRNETPSDPVIIDRFLLKFFLKNQNLKTAGNPRDMRRF  
 QVVLSTTVNVDGHVLAUSDNMFVHNSKHGRRARRLDPSEATPCIKAIISPSEGWTGGAMVIIIGDNFFD  
 GLQVVFMTLVWSELITPHAIRVQTPPRHIPGVVEVTLVSYKSKQFCGAPGRFIYALNEPTIDYGFQRL  
 QKVIPRHPGDPERLAKEMLLKRAADLVEALYGTPHNNQDIILKRAADIAEALYSVPRNPSQIPALSSSPA  
 HSGMMGINSYGSQLVSISESTQGNQGYIRNTSSISPRGYSSSSTPQQSNYSTSSNSMNGYSNVPANL  
 GVPGSPGFLNGSPTGSPYIMSSSPTVGSSTSSILPFSSSVFPAVKQKSAFAPVIRPQGSPPACSSGN  
 NGFRAMTGLVPPM

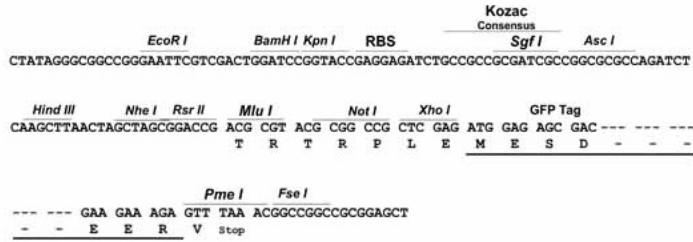
**TRTRPLE - GFP Tag - V**

**Restriction Sites:**

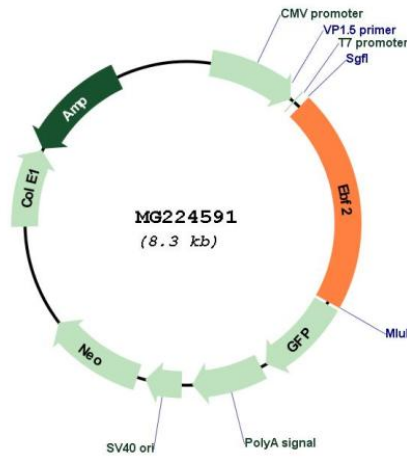
SgfI-MluI

Cloning Scheme:

Cloning sites used for ORF Shutting:



Plasmid Map:



ACCN: NM\_010095  
 ORF Size: 1725 bp

<b>OTI Disclaimer:</b>	<p>Due to the inherent nature of this plasmid, standard methods to replicate additional amounts of DNA in E. coli are highly likely to result in mutations and/or rearrangements. Therefore, OriGene does not guarantee the capability to replicate this plasmid DNA. Additional amounts of DNA can be purchased from OriGene with batch-specific, full-sequence verification at a reduced cost. Please contact our customer care team at <a href="mailto:custsupport@origene.com">custsupport@origene.com</a> or by calling 301.340.3188 option 3 for pricing and delivery.</p> <p>The molecular sequence of this clone aligns with the gene accession number as a point of reference only. However, individual transcript sequences of the same gene can differ through naturally occurring variations (e.g. polymorphisms), each with its own valid existence. This clone is substantially in agreement with the reference, but a complete review of all prevailing variants is recommended prior to use. <a href="#">More info</a></p>
<b>OTI Annotation:</b>	<p>This clone was engineered to express the complete ORF with an expression tag. Expression varies depending on the nature of the gene.</p>
<b>Components:</b>	<p>The ORF clone is ion-exchange column purified and shipped in a 2D barcoded Matrix tube containing 10ug of transfection-ready, dried plasmid DNA (reconstitute with 100 ul of water).</p>
<b>Reconstitution Method:</b>	<ol style="list-style-type: none"><li>1. Centrifuge at 5,000xg for 5min.</li><li>2. Carefully open the tube and add 100ul of sterile water to dissolve the DNA.</li><li>3. Close the tube and incubate for 10 minutes at room temperature.</li><li>4. Briefly vortex the tube and then do a quick spin (less than 5000xg) to concentrate the liquid at the bottom.</li><li>5. Store the suspended plasmid at -20°C. The DNA is stable for at least one year from date of shipping when stored at -20°C.</li></ol>
<b>RefSeq:</b>	<p><a href="#">NM_010095.6</a>, <a href="#">NP_034225.1</a></p>
<b>RefSeq Size:</b>	<p>5527 bp</p>
<b>RefSeq ORF:</b>	<p>1728 bp</p>
<b>Locus ID:</b>	<p>13592</p>
<b>UniProt ID:</b>	<p><a href="#">O08792</a></p>
<b>Cytogenetics:</b>	<p>14 D1</p>
<b>Gene Summary:</b>	<p>Transcription factor that, in osteoblasts, activates the decoy receptor for RANKL, TNFRSF11B, which in turn regulates osteoclast differentiation. Acts in synergy with the Wnt-responsive LEF1/CTNNB1 pathway. Recognizes variations of the palindromic sequence 5'-ATTCCCNNGGGAATT-3'. [UniProtKB/Swiss-Prot Function]</p>