

Product datasheet for **MG224585**

Slc16a7 (NM_011391) Mouse Tagged ORF Clone

Product data:

Product Type:	Expression Plasmids
Product Name:	Slc16a7 (NM_011391) Mouse Tagged ORF Clone
Tag:	TurboGFP
Symbol:	Slc16a7
Synonyms:	4921534N07Rik; Mct2
Mammalian Cell Selection:	Neomycin
Vector:	pCMV6-AC-GFP (PS100010)
E. coli Selection:	Ampicillin (100 ug/mL)



[View online »](#)

ORF Nucleotide Sequence:

>MG224585 representing NM_011391
 Red=Cloning site Blue=ORF Green=Tags(s)

TTTTGTAATACGACTCACTATAGGGCGGCCGGAATTCGTCGACTGGATCCGGTACCGAGGAGATCTGCC
 GCC**CGGATCGCC**

ATGCCATCAGAGCCTTCCGCGCCGCTTCCACAACCACTTCTCCCGACGGAGGGTGGGGCTGGTGTAG
 TCTGTGCGTCCTTATCTCCATTGGATTTTCATATGCCTTCCCAAAGCTGTACAGTATTCTTCAAAGA
 CATCCAGGAAATATTCAACACCACCTCCAGTCAGATCGCTTGGATATCGTCCATCATGCTAGCTGTCATG
 TATGCGGGAGGTCCCATCAGTAGTGTGTTGGTGAATAACTATGGCAGCCGGCCTGTGGTATAGTGGGAG
 GACTATTGTGCTGCATTGGAATGATCTTGGCTTCTACAGCAACAGCGTGATAGACTTTATCTCACCGT
 TGGCTTATTGGAGTTTAGGATTAGCATTCAACCTGCAACCAGCCTTAAACAATAATTGGAAAATACTTC
 TATAGAAGACGACCCTTGCAAATGGCTGCGCCATGGCTGGAAGTCTGTTTTCTTAAGCACACTGGCTC
 CTTTCAATCAGTACCTATTTAACTATGGCTGGAAGGGGAGTTTTTTGATTTTGGGAGGTATATTTT
 GCACTCCTGTGTGGCTGGGTGCCTCATGAGACCTGTTGGCCAAGTCAAATACTAAGAAGTCTAAAAGT
 AAGGTTGGCTCAAGACATGATCAACTCTGAAGAAAGCCAGTAAGGTATCAACAGCACAAAAGGTTAATA
 GTTTTTATGATTTAGCCTTTTTATGCATAGAGGATTTTTGATCTACCTATCTGGAACGTCATATTGTT
 TTTAGGGATTTTTGCCCTATTATTTCTTGGCTCAGTACGCTAAACACATAGGAGTGGATGACTATAAC
 TCAGCTTTTTTACTGTCTGTGATGGCTTTTATCGATATGTTTGTCTCGGCCTTCTGTAGGATTAATAGCCA
 AACTAGATTAATCCGTCACGAATCCAGTACCTTTCAGCTCTGCAATCATCTTTACTGGCATATGCCA
 TCTCTTATGCCCCCTAGCAACTACCTACTCAGCTTTGGTGGTCTACGTTGATTTTTTGGATTGGGATTT
 GGAAGTATTAGCAGTCTCCTCTTTGAATGCCTTATGGACATTGTTGGAGCTACCAGTTCTCCAGTGCTG
 TGGGACTCACAAATCGTGGAGTGTGTCAGCTCTTTTCGGCCCTCTCTGGCTGTTAAATGCTTGA
 TATAACTGGAGAATAAATACTGTACATAGCCAGCGGAACAGTCGTGTTAGTATCAGGTACTTACCTC
 CTGATTGGCAATGCTATAAACTATAGACTTCTCGACAAGGAAAGGAGAGAGAAGGCAAAGAAGAAGA
 AGTCAGCTTACACGCGTCCAGAGAAATGGAGGCCCTGAACAGATCTAAACAGGACGAAGTTACTGTCAA
 AGCTTCAAACGCACACAATCCTCCCTCAGACAGGGACAAAGAGTAATATT

AG**CGGACCG**ACGCGTACGCGGCCGCTCGAG - GFP Tag - GTTTAA

Protein Sequence:

>MG224585 representing NM_011391
 Red=Cloning site Green=Tags(s)

MPSEPSAPLPQPLPPDGGWGWVVCASFISIGFSYAFPKAVTVFFKDIQEIFNNTSSQIAWISSIMLAVM
 YAGGPISSVLVNNGSRPVVIVGGLLCCIGMILASYSNSVIELYLTGVF IGGLGLAFNLQPALTIIGKYF
 YRRRPLANGCAMAGSPVFLSTLAPFNQYLFNNYGWKGSLILGGIFLHSCVAGCLMRPVGSPNTKKS
 KVSRRHSTLKKASKVSTAQKVNRFDFSLFMHRGFLIYLSGNVILFLGIFAPIIFLAQYAKHIGVDDYN
 SAFLLSVMFIDMFARPSVGLIANTRLIRPRIQYLFSSAIFTGICHLLCPLATTYSALVYVYVFFGLGF
 GSISLLFECLMDIVGATRFSSAVGLTTIVECCPVLFPPPLAGKLLDITGEYKLYIASGTVVLVSGTYL
 LIGNAINYRLDKERKREKAKKKKSASHASREMEALNRKQDEVTVKASNAHNPPSDRDKESNI

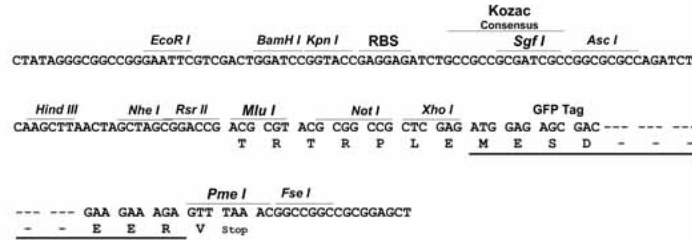
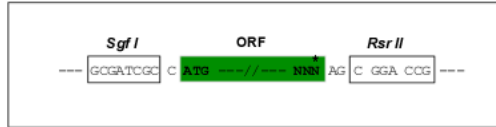
SGP**TRRRLE** - GFP Tag - V

Restriction Sites:

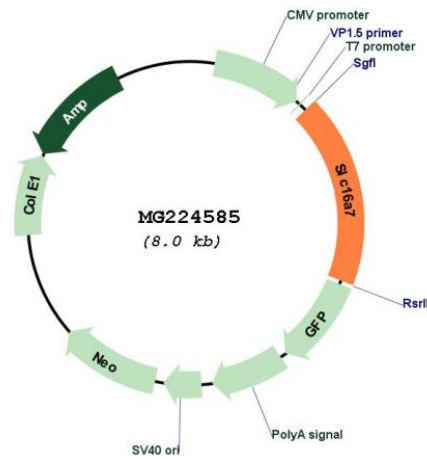
SgfI-RsrII

Cloning Scheme:

Cloning sites used for ORF Shuttling:



Plasmid Map:



ACCN: NM_011391
 ORF Size: 1452 bp

OTI Disclaimer:	<p>Due to the inherent nature of this plasmid, standard methods to replicate additional amounts of DNA in E. coli are highly likely to result in mutations and/or rearrangements. Therefore, OriGene does not guarantee the capability to replicate this plasmid DNA. Additional amounts of DNA can be purchased from OriGene with batch-specific, full-sequence verification at a reduced cost. Please contact our customer care team at custsupport@origene.com or by calling 301.340.3188 option 3 for pricing and delivery.</p> <p>The molecular sequence of this clone aligns with the gene accession number as a point of reference only. However, individual transcript sequences of the same gene can differ through naturally occurring variations (e.g. polymorphisms), each with its own valid existence. This clone is substantially in agreement with the reference, but a complete review of all prevailing variants is recommended prior to use. More info</p>
OTI Annotation:	<p>This clone was engineered to express the complete ORF with an expression tag. Expression varies depending on the nature of the gene.</p>
Components:	<p>The ORF clone is ion-exchange column purified and shipped in a 2D barcoded Matrix tube containing 10ug of transfection-ready, dried plasmid DNA (reconstitute with 100 ul of water).</p>
Reconstitution Method:	<ol style="list-style-type: none">1. Centrifuge at 5,000xg for 5min.2. Carefully open the tube and add 100ul of sterile water to dissolve the DNA.3. Close the tube and incubate for 10 minutes at room temperature.4. Briefly vortex the tube and then do a quick spin (less than 5000xg) to concentrate the liquid at the bottom.5. Store the suspended plasmid at -20°C. The DNA is stable for at least one year from date of shipping when stored at -20°C.
RefSeq:	<p>NM_011391.1, NP_035521.1</p>
RefSeq Size:	<p>2422 bp</p>
RefSeq ORF:	<p>1455 bp</p>
Locus ID:	<p>20503</p>
UniProt ID:	<p>O70451</p>
Cytogenetics:	<p>10 D3</p>
Gene Summary:	<p>Proton-coupled monocarboxylate transporter. Catalyzes the rapid transport across the plasma membrane of many monocarboxylates such as lactate, pyruvate, branched-chain oxo acids derived from leucine, valine and isoleucine, and the ketone bodies acetoacetate, beta-hydroxybutyrate and acetate. Functions as high-affinity pyruvate transporter. [UniProtKB/Swiss-Prot Function]</p>