

Product datasheet for **MG224578**

PPP3CC (NM_008915) Mouse Tagged ORF Clone

Product data:

Product Type:	Expression Plasmids
Product Name:	PPP3CC (NM_008915) Mouse Tagged ORF Clone
Tag:	TurboGFP
Symbol:	PPP3CC
Synonyms:	Calnc; PP2BA gamma
Mammalian Cell Selection:	Neomycin
Vector:	pCMV6-AC-GFP (PS100010)
E. coli Selection:	Ampicillin (100 ug/mL)



[View online »](#)

ORF Nucleotide Sequence:

>MG224578 representing NM_008915
 Red=Cloning site Blue=ORF Green=Tags(s)

TTTTGTAATACGACTCACTATAGGGCGGCCGGAATTCGTCGACTGGATCCGGTACCGAGGAGATCTGCC
 GCCGCGATCGCC

ATGTCCGTGAGGGCCCTCAGTTCTCCAGCACCAGCGCGTCATCAAAGCTGTCCCTTTCTCCAACCC
 GACGGCTAACTTTGAAGGAAGTTTTGAGAATGGGAAACCTAAAATGGATCTTTGAAAAACCATTTAGT
 AAAAGAAGGTCGGGTGGAAGAGGAGGTGGCCTTAAAGATCATCAATGATGGGGCTGCCATCCTGAAGCAG
 GAGAAGACCATGATAGAGGTGGAGGCTCCGATCACAGTGTGTGGTGTGTTGATGGACAATCTTTGACC
 TGATGAAGTTGTTGAAGTTGGGGGATCACCTAGTAATACTCGCTACCTCTTCTGGGTGACTATGTGGA
 CAGAGGCTATTTAGTATAGAGTGTGTGCTGTATCTATGGAGCTTAAAGATTAACCATCTAAAACATTG
 TTTCTGCTCGAGGAAATCATGAATGCAGGCATTTACAGAGTACTTACCTTCAAACAGGAATGTCGGA
 TCAAGTATTCAGAGATGGTGTACGATGCGTGCATGCACACTTTCGACTGTCTTCTTGTGCCCTCTT
 AAACCAGCAGTTTCTCTGTGACATGGAGGAATGTCTCCTGAAATTAAGTTGTTAGAGGACATTAGGAAA
 TTAGATAGGTTTTCTGAGCCTCCTGCTTTTGGGCCAGTGTGTGACCTGTGTGGTCTGATCCCTTAGAGG
 ACTACGGCAGCGAGAAGACCCTGGAGCACTATACCCACAACACTGTCCGAGGCTGCTCCTACTTCTTCAG
 TTACCCTGCAGTTTGTGAATTTTACAGAACAACAGTTTATTATCAATAATCAGAGCCCATGAAGCCGAG
 GATGCGGGGTACCGAATGTATAGGAAGAACAAGCAACTGGCTTTCCGTCACCTATTACGATTTTCTCTG
 CCCCTAATTACCTAGATGTCTATAACAATAAAGCTGCAGTGTGAAGTATGAAAACAATGTCATGAACAT
 CAGGCAGTTCACTGTCCCCACACCCCTACTGGCTCCCAAATTCATGGATGTTTTACGTTGGTCTTTG
 CCTTTTGTGGAGAGAAAGTGACAGAGATGCTGGTCAATATTCTCAACATATGCTCGGATGAAGAAATGA
 ACGTAACCGATGAAGAAGGAGCTACTACAGGTCGAAAAGAAGTCAAGAATAAAATCCGAGCCATTGG
 GAAAATGGCCCGGTCTTTACGGTCTTTCGGGAAGAGAGTGAAGAATGTGCTGACCCCTCAAGGGCCTCACT
 CCCACAGGCACACTCCCCTGGGGTCTCTCTGGAGGAAAGCAGACCATTGAGACTGCCAAACAAGAAG
 CCGCAGAGGAGCGGAAGCCATCAGAGTTTTACAATTGCACACAGGATCCGAAGTTTTGAAGAAGCCG
 AGGTCTAGACCGAATTAATGAGAGAATGCCACCCCGAAAAGAGGCTTCATATCATCATGATGCAGGGAGG
 ATGCACTCACACTCGCATCCGCCACACCACAGGCGTCAAGAAGGACCGACCATGGAAAGAAAGCCCTG

ACGCGTACGCGGCCGCTCGAG - GFP Tag - GTTTAA

Protein Sequence:

>MG224578 representing NM_008915
 Red=Cloning site Green=Tags(s)

MSVRRPQFSTTERVIKAVPFPTRRLTLKEVFENGKPKMDLLKNHLVKEGRVEEVALKIINDGAAILKQ
 EKTMIIEVEAPITVCGDVHGQFFDLMKLFEVGGSPNTRYLFLGDYVDRGYFSIECVLYLWSLKINHPKTL
 FLLRGNHECRHLTEYFTFKQECRIKYSYEMVYDAMHTFDCLPLAALLNQFLCVHGGMSPEITCLEDIRK
 LDRFSEPPAFGPVCDLLWSDPLEDYGSEKLEHYTHNTVRGCSYFFSYPVACEFLQNSLLSIIRAHEAQ
 DAGYRMYRKNQATGFPSLITIFSAPNYLDVYNNKAAVLKYENNVNIRQFNCSPPHYWLPNFMDFVFTWSL
 PFVGEKVTEMLVNILNICSDEEMNVTDEEGATTGRKEVIKNIKIRAIKMARVFTVLRRESENVLTLLGLT
 PTGTLPLVLGGKQTIETAKQEAEEEREAIRGFTIAHRIRSFEEARGLDRINERMPPRKEASYHHDAGR
 MHSHPHPHPQASRRTDHGKAL

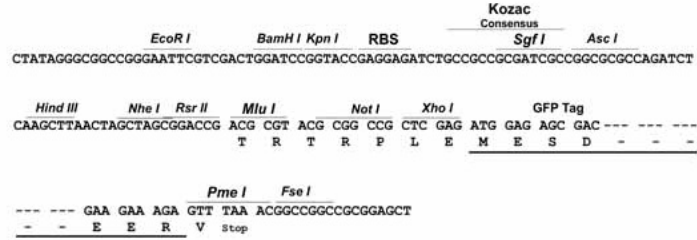
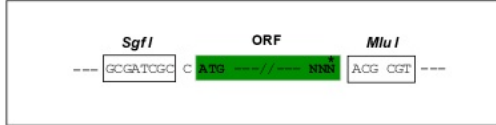
TRTRPLE - GFP Tag - V

Restriction Sites:

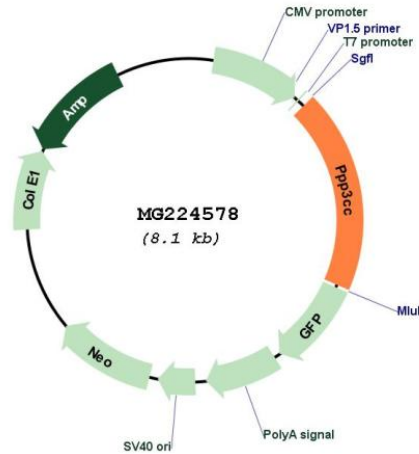
Sgfl-MluI

Cloning Scheme:

Cloning sites used for ORF Shutting:



Plasmid Map:



ACCN: NM_008915

ORF Size: 1539 bp

OTI Disclaimer: The molecular sequence of this clone aligns with the gene accession number as a point of reference only. However, individual transcript sequences of the same gene can differ through naturally occurring variations (e.g. polymorphisms), each with its own valid existence. This clone is substantially in agreement with the reference, but a complete review of all prevailing variants is recommended prior to use. [More info](#)

OTI Annotation: This clone was engineered to express the complete ORF with an expression tag. Expression varies depending on the nature of the gene.

Components: The ORF clone is ion-exchange column purified and shipped in a 2D barcoded Matrix tube containing 10ug of transfection-ready, dried plasmid DNA (reconstitute with 100 ul of water).

Reconstitution Method:

1. Centrifuge at 5,000xg for 5min.
2. Carefully open the tube and add 100ul of sterile water to dissolve the DNA.
3. Close the tube and incubate for 10 minutes at room temperature.
4. Briefly vortex the tube and then do a quick spin (less than 5000xg) to concentrate the liquid at the bottom.
5. Store the suspended plasmid at -20°C. The DNA is stable for at least one year from date of shipping when stored at -20°C.

RefSeq: [NM_008915.3](#), [NP_032941.1](#)

RefSeq Size: 1948 bp

RefSeq ORF: 1542 bp

Locus ID: 19057

UniProt ID: [P48455](#)

Cytogenetics: 14 D2

Gene Summary: Calcium-dependent, calmodulin-stimulated protein phosphatase which plays an essential role in the transduction of intracellular Ca(2+)-mediated signals. Dephosphorylates and activates transcription factor NFATC1. Dephosphorylates and inactivates transcription factor ELK1. Dephosphorylates DARPP32.[UniProtKB/Swiss-Prot Function]