

Product datasheet for **MG224532**

Cbfa2t3 (NM_001109873) Mouse Tagged ORF Clone

Product data:

Product Type:	Expression Plasmids
Product Name:	Cbfa2t3 (NM_001109873) Mouse Tagged ORF Clone
Tag:	TurboGFP
Symbol:	Cbfa2t3
Synonyms:	A630044F12Rik; AI465270; AW229127; Cbfa2t3h; ETO-2; Eto2; MTGR2
Mammalian Cell Selection:	Neomycin
Vector:	pCMV6-AC-GFP (PS100010)
E. coli Selection:	Ampicillin (100 ug/mL)



[View online »](#)

ORF Nucleotide Sequence:

>MG224532 representing NM_001109873
 Red=Cloning site Blue=ORF Green=Tags(s)

TTTTGTAATACGACTCACTATAGGGCGGCCGGAATTCGTCGACTGGATCCGGTACCGAGGAGATCTGCC
 GCC**CGGATCGCC**

ATGTCCCAGGCATCCACCACCACTCTGGAGAGTGGGGCACTCCTCTCGGGACCCCGGGTCTTCAGAATG
 GAAGCCCAGCTCACAGGAAGGAGAAGGCTGCAGCAATGCCAGACTCCCGGCTGAAGTGAAGACGCAGCC
 CCGGTCCACACCCCCAGCATGCCGCCCCACCTCCACCTCATCCAGGGAGCCACACGACCACCTCC
 TTCACACCTCACACATGGCGAGGATGGACCTGCGACGTCTCTCCCATGGCCGTTTCCACGGTGTCT
 TAAAGTGGTCCATGGTCTGTCTTGTGTAACGGCAGCAGCCACTCACCCAGGCCATCCACGGTCCCC
 ATCTACACCCAATGGCTTCAGCAACGGCCAGCCACCTCATCCACGGCTCGCTCTCCACACAGCACCTG
 CCCCCGGCTGCGGGCACGGCAGCTCAGCAAGCTTAAGCGTTTCTCACCACCTACAGCAGTTTGGCA
 GTGACATCTCACCTGAGATCGGGAGCGGTGCGCACACTGGTGTGGGCTGGTGAACCAACTCTGAC
 GATCGAAGAGTTTCATGCCAAGTCCAGGAAGCCACCAACTTTCCACTGAGGCCGTTTGTATCCCTTTT
 CTGAAGGTAATCTTCCACTGCTGCAGCGTGAGCTCCTGCACTGTGCCCGCTGGCCAAACAGACACCTG
 CCCAGTACCTGGCCAGCACGAACAGCTGCTGCTGGACGCCAGCGCCACCTCCCTGTGCACTCGTCTGA
 GCTCCTGCTGGAAGTCAACGAGAACGGCAAAAGGAGAACCTGCAGGACCAAAGAGAATGGATCAGAC
 CGGGACCTCTGCACCCGACCACCTCAGTAAGCGGTCTGCACCTGAGCCCGCCAGCGCTGCAGCC
 CCAGCAATGGGCTGCCCCACCCGACGCCACCCCAACCCCGCACTATCGCTGGAGGACATGGCCATGGC
 CCACCATTTCCGGGACTCCTACCGCCATCCTGATCCCCGAGAGCTACGGGAACGCCACCGGCCCTGGCC
 ATACCTGGTCTCGACAAGAAGAAGTATTGATCACAGGCTCACAGAACGCGAGTGGGCAGAAGAATGGA
 AGCACCTCAACAGTCTTCTGAACATGCATCATGGACATGGTGGAGAAGACCCGGCGATCCCTCACCCTCT
 AGCCCGGTGTGAGGAGCCGACCGTGAGGAATCAACCACTGGATCCGGTGTACAGTACTCTGAGGAG
 GGAAGAAGGGCCCTACCCCATCTCTGCCGGTCCCTCAACAGCTGCAGTGGCCCTGAGGGTCTCAGC
 TAGATGTTACCGGGACTTCACGCCAGGACCCTGTCTGGCTACATGCCTGAAGAGATCTGGAGGAAGGC
 TGAAGAAGCTGTGAATGAGGTGAAGCGCCAGGCCATGTCAGAACTACAGAAAGCTGTGTCTGATGCGGAG
 CGCAAAGCCCATGAACTCATCACACAGAGCGTGCCAAGATGGAACGAGCCCTGGCGGAGCCAAGCGAC
 AGGCCTCGGAGGATGCCCTGACTGTCATCAACCAGCAAGAGGACTCCAGCGAGAGCTGCTGGAACGCGG
 GCGCAAGGCCAGCGAGAGCTGCAGTGGCTGTAAACGCCCGCTACTGCGGGTCTTCTGTCAGCACAAA
 GACTGGGAGAAACACCATCACGTGTGCGCCAGAGTCTGCAGGGCCCGGGCTGCAGTGGCTGACCCAC
 TACCTGGACAGCCTGACGCCACTGCCAGCCCCAGCGAAGCCGGCTCGGCAGGGCCCTCTCGTCCCTGCTC
 TCGGGGCGCCAGGCCGCTGGACGCTGCTGTGCCCCG

ACGCGTACGCGGCCGCTCGAG – GFP Tag – GTTTAA

Protein Sequence:

>MG224532 representing NM_001109873
 Red=Cloning site Green=Tags(s)

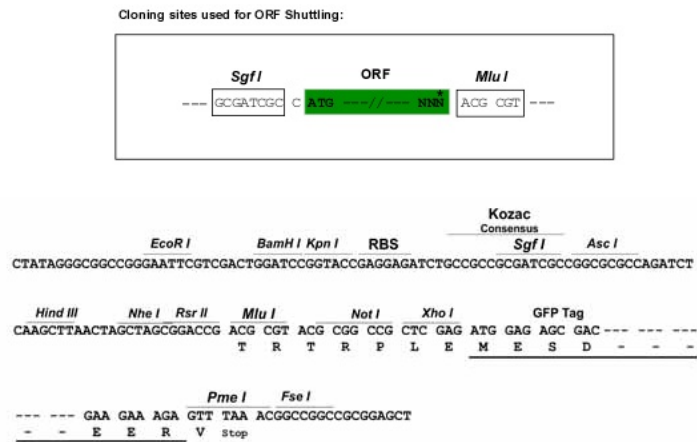
MSQASTTTLESGALLSGPRGLQNGSPAHRKEKAAAMPDSPADEVKTPRSTPPSMPPPPPTSSQGATRPPS
 FTPHTHGEDGPATSLPHGRFHGCLKWSMVCLLMNGSSHSPTAIHGAPSTPNGFSNGPATSSASLSTQHL
 PPACGARQLSKLKRFLTTLQQFGSDISPEIGERVRLVLGLVNSTLTIEEFHAKLQEATNFPLRPFVIPP
 LKANLPLLQRELLHCARLAKQTPAQYLAQHEQLLLDASATSPVDSELLLLEVNENGRKRRTPDRTKENGSD
 RDPLHPDHLKRSCTLSPAQRCSNGLPHPTPPPPHYRLEDMAAAHFRDSYRHPDRELRLRHRPLA
 IPGSRQEEVIDHRLTEREWAEEWKHLNLLNCLNIMDMVEKTRRSLTVLRRCQEAADREELNHWIRCYSDSEE
 GKKGPTPISARSLNSCSGPEGSQLDVHRDFTPTRLSGYMPPEIWRKAEEAVNEVKRQAMSELQKAVSDAE
 RKAEHLITTERAKMERALAEAKRQASEDALTVINQQEDSSESCWNCGRKASETCSGCNAARYCGSFCQHK
 DWEKHHHVCGQSLQGPAAAVADPLPGQPDATASPEAGSAGPSRCPSPGPPGLDAAVPR

TRTRPLE – GFP Tag – V

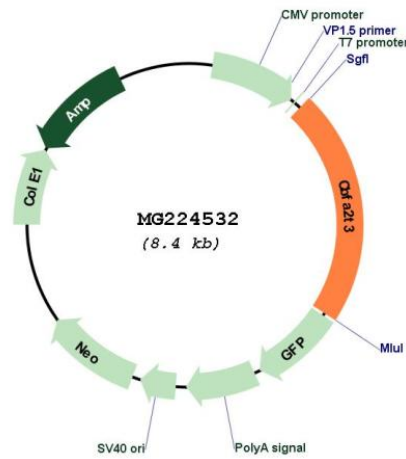
Restriction Sites:

Sgfl-MluI

Cloning Scheme:



Plasmid Map:



ACCN: NM_001109873
 ORF Size: 1755 bp

OTI Disclaimer:	The molecular sequence of this clone aligns with the gene accession number as a point of reference only. However, individual transcript sequences of the same gene can differ through naturally occurring variations (e.g. polymorphisms), each with its own valid existence. This clone is substantially in agreement with the reference, but a complete review of all prevailing variants is recommended prior to use. More info
OTI Annotation:	This clone was engineered to express the complete ORF with an expression tag. Expression varies depending on the nature of the gene.
Components:	The ORF clone is ion-exchange column purified and shipped in a 2D barcoded Matrix tube containing 10ug of transfection-ready, dried plasmid DNA (reconstitute with 100 ul of water).
Reconstitution Method:	<ol style="list-style-type: none"> 1. Centrifuge at 5,000xg for 5min. 2. Carefully open the tube and add 100ul of sterile water to dissolve the DNA. 3. Close the tube and incubate for 10 minutes at room temperature. 4. Briefly vortex the tube and then do a quick spin (less than 5000xg) to concentrate the liquid at the bottom. 5. Store the suspended plasmid at -20°C. The DNA is stable for at least one year from date of shipping when stored at -20°C.
RefSeq:	NM_001109873.1 , NP_001103343.1
RefSeq Size:	7678 bp
RefSeq ORF:	1758 bp
Locus ID:	12398
UniProt ID:	O54972
Cytogenetics:	8 E1
Gene Summary:	Transcriptional corepressor which facilitates transcriptional repression via its association with DNA-binding transcription factors and recruitment of other corepressors and histone-modifying enzymes. Can repress the expression of MMP7 in a ZBTB33-dependent manner. Reduces the protein levels and stability of the transcriptional regulator HIF1A; interacts with EGLN1 and promotes the HIF1A prolyl hydroxylation-dependent ubiquitination and proteasomal degradation pathway. Contributes to inhibition of glycolysis and stimulation of mitochondrial respiration by down-regulating the expression of glycolytic genes including PFKFB3, PFKFB4, PDK1, PFKP, LDHA and HK1 which are direct targets of HIF1A (By similarity). Regulates the proliferation and the differentiation of erythroid progenitors by repressing the expression of TAL1 target genes (PubMed:16407974). Plays a role in granulocyte differentiation (PubMed:15231665).[UniProtKB/Swiss-Prot Function]