

## Product datasheet for **MG224515**

### **Bbs9 (NM\_178415) Mouse Tagged ORF Clone**

#### **Product data:**

Product Type:	Expression Plasmids
Product Name:	Bbs9 (NM_178415) Mouse Tagged ORF Clone
Tag:	TurboGFP
Symbol:	Bbs9
Synonyms:	E130103I17Rik
Mammalian Cell Selection:	Neomycin
Vector:	pCMV6-AC-GFP (PS100010)
E. coli Selection:	Ampicillin (100 ug/mL)



[View online »](#)

**ORF Nucleotide Sequence:**

>MG224515 representing NM\_178415  
 Red=Cloning site Blue=ORF Green=Tags(s)

TTTTGTAATACGACTCACTATAGGGCGGCCGGAATTCGTCGACTGGATCCGGTACCGAGGAGATCTGCC  
 GCC**CGCATCGCC**

ATGTCCTTATTTAAAGCCCGTACTGGTGGTCTACTGTGTGGGAGAAAAAGAAGATTTGACCAGGGCT  
 GCTTATGCTTGGCTGATGTGGACAACAGTGGGAACGGCCACGATAAAAATCATTGTGGGCAGCTTCATGGG  
 CTACCTGAGAATCTTTAGTCCCCATTCTGTAAAAGCTGGAGGTGGGCCTCAGGCTGAAGATTTACTTCTA  
 GAAGTGCATCTGCGGGACCCAGTCTGCAAGTGGAAAGTGGGAAGTTTGTCTCGGGCACCAGATGCTTC  
 ATCTGGCCGTGCTGCACTCCCGAAGCTCTGTGTCTACTCCGTCTCAGGGACATTGGGAAATGTGGAACA  
 TGGAAACCAATATCAGATAAACTAATGTATGAGCACCATCTCAGAGGACGGCTGCAATATGACGTAT  
 GGACCTTTGGTGGTGTAAAAGGTGGGATTTAATTTGTATCCAGTCTCTGGATGGGATGCTGATGGTGT  
 TTGAGCAGGAAAGCTATGCGTTTGGGAGTTTCTCCCTGGTTTTCTTCTGCCTGGCCCTCTTGCTTACAG  
 TCCCCGCACGGATTCCTTCATAACTGTGTCTTCTTGCAGACAAGTGGAAAGTTACAAGTACCAGGTA  
 GCCTTTGCCACAGATGCAGACAAGAAGCAGGAGATGGAACAGCAAAAACCTGGTTCTGGAAGCGGCTAG  
 TTGTGGACTGGACTCTGAATATTGGCGAGCAAGCCCTTGATATCTGTATCTTCCCTTTGAACCAATCTGC  
 ATCTTCTGTTTTTGTCTTGGTGTGAGAGAACTCTTTTGCCTAAAGGATAATGGGCAGATTGATTCATG  
 AAGAAGCTCGGTTATAACCCCAAGTTGTTTTCTACCGTACTGCTCAGTTTCTGAAGGTACAATAAATACTT  
 TGATTGGAACCAATAACCCATGCTGCATATTTACCAGGACGTGACACTGAAGTGGGCCACACAACCTCCC  
 CCACGTCCCCGTGGCCGTGAGTAGGCTGTTTTCATGATTTGAAGGGAGTGATAGTACTCTCAGTGAT  
 GACGGTCACCTGCAGTGTCTGATCTGGGACAGACCTTCTTTGTTCCAGGCTCCAAAAGTTGAATCAA  
 GAGACTCAACTATGATGAACCTGATGTGGAATTGAAAGAATCAGAAAATCATCAAAGTCAAAAGTT  
 GCAAGGTGTTTGGCCCTTGACTGAACAGGAAGTGAAGTGAAGTCTCTGCTTCAAGTGTCTTACCCCTG  
 GATTCTGTGTCTCAAGCCACCAATGTGGAACCTGGAGCTGACTCTGTCCCGTCCATCACAGTGAAGATTA  
 CCCTGCAGAACCAGTGGTGTGTCAGAAGTCAAGCTGTCTATCTATGTGCAGCCTCCACTACAGTTGAC  
 TTGTGATCAGTTCACCTTTGACTTCACGGTTCAGATATGACGAGTTCAGTAGCGTTTTCTGTGTACCTG  
 AAGAGAACTACACACCATCCGAGTTAGAAGGAAATGCTGTTGTTTTCTACTCCAGACCGACAGGTATTC  
 CTCGGGTGTCCAATGTAATTTAGACTTCCTCTGAAACTGATTTGCCTACCTGGTCAGCCTTCAAAAAC  
 TGCAAGCCACAACTAATAATAGACACCAACAAATCTCCTGTGAGTCTGCTCGGTCTTCCAGACTTT  
 GCCAACCCATCAGATGACGACCAAGTGAATGTAATGGGCTTCCGTCTCCTAGGAGCGCTCGAGTGACTC  
 TTCTTGCTTCCAGAACATCCCAACGATACCGCATTTCAGAGCGAACAGTTTGAAGATCTCTGGCTCATAAC  
 CAATGAACCTATCTCCGCTTCAGGAACATTTTGA AAAACAGGGAACCAAGACTTTTTCGTGTCTTTT  
 TCTGGGTGTGTGCCCTTCAAGAATATTTTGTGATTGATTGATCATATTTTGTGCTGCGGATAAATGGTA  
 AAAAATTTGGAAGAATTTTATCTGAAAGAGCTGTACAATTTGGGGCCATTGAGCTCGGCTTCTGACAAG  
 ATTCAGAGACAAGACCCCTGCCCACTGCAGCACCTGGACACCCTGTGGACGGGACATAACAAGCAGGTG  
 ATTGCTTAGCAGATGCGATCGAGGAGAACCAGGACAGGCTGTTGCAATCATTCTCAGGCCTGAAGAGTG  
 CCACCCATTTGCTGATCCTGCTAATCAGGCTGTGGCAGAGGCTGAGCGCTGACCAGACTGCTATTTCTGGA  
 AGCAGCATTTCTGCCACTACAGGAAGACACGACGAACTGGGCTGGGAAGAAACCGTGGATGCTGCCATT  
 GCCTACCTTTTGA AACCTGCCTGTGCAAGAGTTCCAAGGAGCAGGCTTTGAACCTCAGCAGCCAACTGA  
 ACATACCCAAAGATACCAGCCGGCTGAAGAAGCACATCACCTGTGTGTGATAGTTAGCCAAAGTGG  
 GCGTCTCTGCGTGAGCACAGATGCAGCGGCCCGCAGGCCATGTTGTGCCAGGTGGCTGTACTCCAATC  
 CCAGAGTCAGACCTAGAGGAAAGGTCACTAGATGACTCCACAGAGCTGTTTACCAACCACAAGCACCTCA  
 TGACCGAGCCCCCATGCCTGAAGTCTCAGCCCGCAAGGAGTTTTGGAA

**ACGCGTACGCGGCCGCTCGAG** - GFP Tag - **GTTTAA**

**Protein Sequence:** >MG224515 representing NM\_178415  
 Red=Cloning site Green=Tags(s)

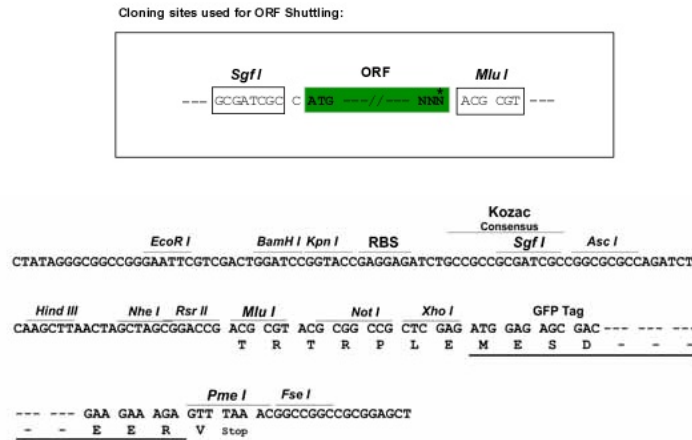
```
MSLFKARDWSTVLGEKEEFDQGCLCLADVNSGNHDKIIVGSFMGYLRIFSPHSVKAGGGPQAEDLLL
EVHLRDPVLQVEVGK FVSGTEMLHLAVLHSRKL CVYSVSGTLGNVEHGNQYQIKLMEHHLQRTACNMTY
GPFGGVKGRDLICIQSLDGLMVFEQESYAFGRFLPGFLLPGPLAYSPRTDSFITVSSCRQVESYKYQVL
AFATDADKKQEMEQQKLGSGKRLVVDWTLNIGEQALDICIFPLNQSASSVFLGERNFFCLKDNGQIRFM
KKLGYNPSCFLPYCSVSEGTINTLIGNHNHMLHIYQDVTLKWATQLPHVPVAVRVGCFHDLKGVIVTLD
DGHLQCSYLGTDPSLFQAPKVESRELNDELDELVELKELQKIKDVKLGQVWPLTEQEDDLKVSASVSSTL
DSVSQATNVEPGADSVPSITVKITLQNRVVLQKVKLSIYVQPPLQLTCDQFTDFTVPDMTSSVAFSVYL
KRNYTPSELEGNVVSYSRPTGIPRVVQCKFRLPLKLI CLPGQPSKTASHKLTIDTNKSPVSLGLFPDF
ANPSDDDQVNMVGFRLGGARVTLASRTSQRYSIQSEQFEDLWITNELILRLQEHFEKQGTDFSCSF
SGCVPLQEYFELIDHHFELRINGKLEELL SERAVQFRATQRLLTRFRDKTPAPLQHLDTLLDGTQYKQV
IALADAIEENQDRLLQSF SGLKSATHLLILLIRLWQRLSADQTAILEAFLPLQEDTQELGWEETVDAAI
AYLLKTCLSKSSKEQALNLSSQLNIPKDT SRLKKHITLLCDRLAKGGRLCVSTDAAPQAMVVPGGCTPI
PESDLEERSLDDSTELFTNHKHLMT EPPMPEVSARQGVLE
```

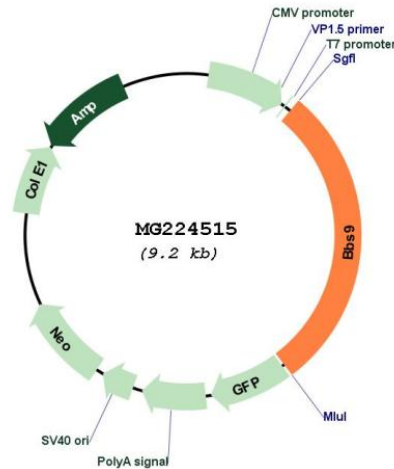
TRTRPLE - GFP Tag - V

**Restriction Sites:**

Sgfl-MluI

**Cloning Scheme:**



**Plasmid Map:**


**ACCN:** NM\_178415

**ORF Size:** 2640 bp

**OTI Disclaimer:** Due to the inherent nature of this plasmid, standard methods to replicate additional amounts of DNA in E. coli are highly likely to result in mutations and/or rearrangements. Therefore, OriGene does not guarantee the capability to replicate this plasmid DNA. Additional amounts of DNA can be purchased from OriGene with batch-specific, full-sequence verification at a reduced cost. Please contact our customer care team at [custsupport@origene.com](mailto:custsupport@origene.com) or by calling 301.340.3188 option 3 for pricing and delivery.

The molecular sequence of this clone aligns with the gene accession number as a point of reference only. However, individual transcript sequences of the same gene can differ through naturally occurring variations (e.g. polymorphisms), each with its own valid existence. This clone is substantially in agreement with the reference, but a complete review of all prevailing variants is recommended prior to use. [More info](#)

**OTI Annotation:** This clone was engineered to express the complete ORF with an expression tag. Expression varies depending on the nature of the gene.

**Components:** The ORF clone is ion-exchange column purified and shipped in a 2D barcoded Matrix tube containing 10ug of transfection-ready, dried plasmid DNA (reconstitute with 100 ul of water).

- Reconstitution Method:**
1. Centrifuge at 5,000xg for 5min.
  2. Carefully open the tube and add 100ul of sterile water to dissolve the DNA.
  3. Close the tube and incubate for 10 minutes at room temperature.
  4. Briefly vortex the tube and then do a quick spin (less than 5000xg) to concentrate the liquid at the bottom.
  5. Store the suspended plasmid at -20°C. The DNA is stable for at least one year from date of shipping when stored at -20°C.

**RefSeq:** [NM\\_178415.1](#), [NP\\_848502.1](#)

RefSeq Size: 3438 bp

RefSeq ORF: 2643 bp

Locus ID: 319845

UniProt ID: [Q811G0](#)

Cytogenetics: 9 A3

**Gene Summary:** The BBSome complex is thought to function as a coat complex required for sorting of specific membrane proteins to the primary cilia. The BBSome complex is required for ciliogenesis but is dispensable for centriolar satellite function. This ciliogenic function is mediated in part by the Rab8 GDP/GTP exchange factor, which localizes to the basal body and contacts the BBSome. Rab8(GTP) enters the primary cilium and promotes extension of the ciliary membrane. Firstly the BBSome associates with the ciliary membrane and binds to RAB3IP/Rabin8, the guanosyl exchange factor (GEF) for Rab8 and then the Rab8-GTP localizes to the cilium and promotes docking and fusion of carrier vesicles to the base of the ciliary membrane. Required for proper BBSome complex assembly and its ciliary localization (By similarity).[UniProtKB/Swiss-Prot Function]