

Product datasheet for **MG224497**

Piwil4 (NM_177905) Mouse Tagged ORF Clone

Product data:

Product Type:	Expression Plasmids
Product Name:	Piwil4 (NM_177905) Mouse Tagged ORF Clone
Tag:	TurboGFP
Symbol:	Piwil4
Synonyms:	9230101H05Rik; Miwi2
Mammalian Cell Selection:	Neomycin
Vector:	pCMV6-AC-GFP (PS100010)
E. coli Selection:	Ampicillin (100 ug/mL)



[View online »](#)

ORF Nucleotide Sequence:

>MG224497 representing NM_177905
 Red=Cloning site Blue=ORF Green=Tags(s)

TTTTGTAATACGACTCACTATAGGGCGGCCGGAATTCGTCGACTGGATCCGGTACCGAGGAGATCTGCC
 GCC**CGCATCGCC**

ATGCGCCTGCGCATTCTGGGGTCCACCGGCCCTGCCACCCACGCTCGGGTTGCTGTTTGTAGTAAC
 ATCTTGGGAAGCTTGAATACTCCCAAATCCGAGTCACAGCCACACCGTCTCTTTTGCCAAAGAGAAAAC
 ACTCCTGTTGAGGCTCACCAGCCCTGGAAAGCCGCTGGCACCCAGGAACATGAGTGGACGGGCCCGTGTG
 AGAGCGGAGGCATCACCAGTGGCCACAGTGTAGGGAAGTGGGGCGGTCTCAAGAGACCTCATGGTTA
 CATCTGCCAGTCTGGGGACAGCGAGGCCGGAGGTGGGACAAGTGTATTTCACAGCCATATGAACCTGG
 TGTCTCTTCTGGTGTGGTGGACGTACCTTCATGGAAAGAAGAGGCAAAGGCAGACAGGACTTCGAAGAG
 TTGGGTGTCTGTACCAGGAAAAGTTGACCCACGTAAGATTGTAAAACAGGTTCTAGCGGAATACCTG
 TCGCGGTGTTACAAATCTCTTTAATTTAGATTTGCCCCAGGATTGGCAGCTGTACCAGTACCATGTCAC
 GTACAGCCAGATTTAGCCTCTAGGAGGCTGAGGATTGCTTTGCTTTATAATCACAGCACTCTCAGAC
 AAGGCAAAGCATTGACGGTGCCAGCCTTTCCCTCTCAGAAAAGCTGGACCAGAAGGTCACAGAACTGA
 CAAGTGAAACACAAGAGGTGAGACTATAAAGATAACGCTCACCCTAACGAGCAAGCTCTTCCCAAACCTC
 CCCTGTGTGCAATTCAGTCTTCAATGTCATCTTCAGAAAGATCTTGAAAACTTGAGTATGTACCAAATT
 GGACGGAACCTTCTATAAGCCTTCAGAACCAGTGGAGATCCCTCAGTACAACAAGCTCCTATTCAATGCTG
 ACGTGAACATAAAAGTCTCCGCAATGAGACCGTCTGGACTTCATGACTGATCTCTGCCTCAGAAGTGG
 CATGCTTGTCTCACCGAGATGTGCCACAAACAAGTGGGGCTCGTTGCCTTACCAGATAACAACAAC
 AAAACATATCGTATCGATGACATTGACTGGTCTGTGAAGCCACACAGGCCTTTCAGAAGCGGGACGGCT
 CAGAGTACATATGTGGATTACTACAAGCAGCAATATGATATCACCTTATCTGACCTAAATCAGCAGT
 GCTTGTTAGTCTGTTGAAAAGAAAAGAGAAATGATAACTCTGAGCCTCAGATGGTCCACCTGATGCCAGAG
 CTCTGCTTTCTCACAGGCCTGAGCAGCCAAAGCAACCTCAGATTTCCGCCTGATGAAGGCAGTAGCTGAAG
 AGACTCGGCTCAGTCTGTGGGAAGGCAGCAGCAGCTGGCCCGACTCGTGGATGACATCCAGAGAACCTT
 ACCTTCTTCTCAAGAAGTCTCTCTCATACTTCCCTTGCCTTTGTGGGCCCCAGAGCCAGGAGGACTTAGC
 AGTGCTATACCACTGAGCACTGTGCTTCCCTTTGCCAGCAGCTGTTAACTGCCCTGAGCCTCTCCCGG
 GAATCCCTCTGCCCCACCTCAAGCCTCCCTCCTTCTGTTCTTGTGTCAACCTGCATTTGCTGCTGACTG
 GTCCAAAGATATGCGATCTTCAAAGTTTTGAGTCTCAGCCTTGAATAGATGGTTGATCGTGTGCTGT
 AACAGGGCTGAGCACTTGATTGAAGCCTTCTGAGCTGTCTGAGGAGAGTTGGAGGTTCCATGGGATTTA
 ACGTGGGCTACCCAAAATCATAAAAGTGGACGAGACCCAGCAGCGTTCCTTCGAGCCATCCAGGTGCA
 CGCGACCCCGATGTTCAAGTGGTGTGATGTGCATTTCTGCCTTCTAATCAGAAGAACTATTACGACTCCATT
 AAAAGTATTTGAGCTCTGACTGCCAGTGCCAAGCCAGTGTGTGCTGACCCGGACCTTGAATAAGCAGG
 GAACGATGCTGAGTGTGGCCACCAAGATCGCCATGCAGATGACCTGCAAACCTTGGCGGAGAGCTGTGGTC
 TGTGGAGATCCATTGAAGTCCCTGATGGTCTGGGATTTGATATCTGCAGAGATGCCCTCAACAAGAAAT
 GTGGTGGTCTGCGGGTTGTAGCCAGCATTAAATCCAGGATCACAGGTGGTTTTCCCGCTGTGCTCTC
 AGAGAACAGCGGCTGATATTGCAGATTGCCTCAAAGTCTGCATGACTGGTGTCTCAACCGGTGGTACAG
 ACACAACCATGACTTGGCGCACGGATAGTCTGTACCGGACGGTGTAGGCAATGGCCAGCTAAAGGCA
 GTTTTGGAATATGAAGTCCACAGCTACTGAAAAGTGTAAACAGAGTGGCGCTCGGATGCCAGGTATGACT
 TCTACCTGATCAGCCAGACTGCTAACCGGGGACTGTTAGTCCCACCACTACAACGTTATCTATGATGA
 CAATGCCTTGAAGCCTGACCACATGCAGCGACTGACCTTCAAACCTGTGCCATCTCTACTACAACCTGGCAG
 GGCTTAATCAGTGTCCCGCACCATGCCAATATGCACACAAGCTGACCTTCTGGTGGCACAAGTGTCC
 ACAAGGAACCAAGTCTGGAATTAGCCAATAATCTTTTCTACCTC

ACGCGTACGCGGCCGCTCGAG - GFP Tag - GTTTAA

Protein Sequence: >MG224497 representing NM_177905
 Red=Cloning site Green=Tags(s)

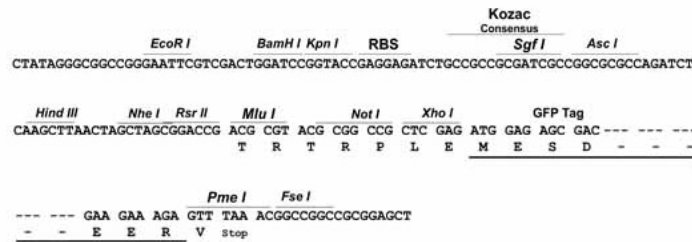
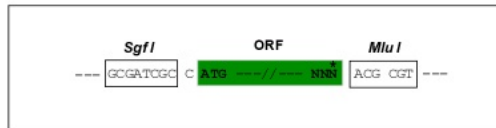
MRLRILGVHRALPTHARVAVCSNYLGKLEYSQTPSHSHTVSFAKEKTL LRLTSPGKPLAPRNM SGRARV
 RARGITTHGSAREVGRSSRDLMVTSASPGDSEAGGTSVISQPYELGVSSGDGGRTFMERRGKGRQDFEE
 LGVCTREKLTHVKDCKTGSSGIPVRLVTNLFNLDLPQDWQLYQYHVTYSPDLASRRRLIALLYNHSILSD
 KAKAFDGASLFLSEKLDQKVTELTSETQRGETIKITLTLT SKLFPNSPVCIQFFNVIFRKILKNLSMYQI
 GRNFYKPEPVEIPQYNKLLFNADVNYKVL RNETVLD FMTDLC LRTGMSCFTEMCHKQLVGLVVLTRYNN
 KTYRIDDDIDWSVKPTQAFQKRDGSEVTYVDYKQYDITLSDLNQPVLV SLLKRRKNDNSEPQMVHLMPE
 LCFLTGLSSQATSDFRLMKAVA ETRLSPVGRQQQLARLVDDIQRTLPS SQEVL SHTSLPLWAPEPGGLS
 SA IPLSTVLPFAQQLLTALSLSPGIPLPHLKPPSFLFCQPAFAADWSKDMRSCKV LSSQPLNRWLIVCC
 NRAEHLIEAFLSCLRRVGGSMGFNVGYPKIIKVDETPA AFLRAIQVHGDPDVQLVMCILPSNQKNYYDSI
 KKYLSDDCPVPSQCVL TRTLNKQGTMLSVATKIAMQMTCKLGGELWSVEIPLKSLM VVGIDICRDALNKN
 VVVVGFVASINSRITRWF SRCVLQRTAAD IADCLKVCM TGALNRWYRHNDL PARI VVYRDGVGNGQLKA
 VLEYEVPQLLKS VTECGSDARYDFYLISQTANRGTVSP THYNVIYDDNALKPDHMQR LTFKLCHLYYNNWQ
 GLISVPAPCQYAHKLTFLVAQSVHKEPSLELANNLFYL

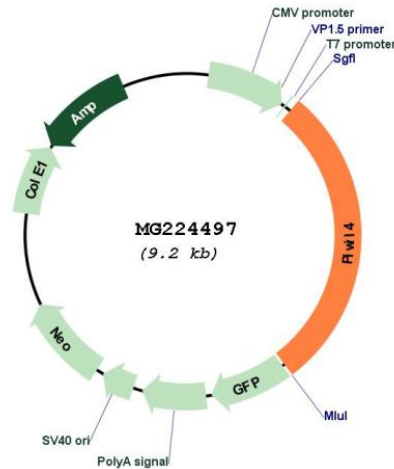
TRTRPLE - GFP Tag - V

Restriction Sites: SgfI-MluI

Cloning Scheme:

Cloning sites used for ORF Shuttling:



Plasmid Map:


ACCN: NM_177905

ORF Size: 2634 bp

OTI Disclaimer: The molecular sequence of this clone aligns with the gene accession number as a point of reference only. However, individual transcript sequences of the same gene can differ through naturally occurring variations (e.g. polymorphisms), each with its own valid existence. This clone is substantially in agreement with the reference, but a complete review of all prevailing variants is recommended prior to use. [More info](#)

OTI Annotation: This clone was engineered to express the complete ORF with an expression tag. Expression varies depending on the nature of the gene.

Components: The ORF clone is ion-exchange column purified and shipped in a 2D barcoded Matrix tube containing 10ug of transfection-ready, dried plasmid DNA (reconstitute with 100 ul of water).

Reconstitution Method:

1. Centrifuge at 5,000xg for 5min.
2. Carefully open the tube and add 100ul of sterile water to dissolve the DNA.
3. Close the tube and incubate for 10 minutes at room temperature.
4. Briefly vortex the tube and then do a quick spin (less than 5000xg) to concentrate the liquid at the bottom.
5. Store the suspended plasmid at -20°C. The DNA is stable for at least one year from date of shipping when stored at -20°C.

RefSeq: [NM_177905.3](#), [NP_808573.2](#)

RefSeq Size: 2637 bp

RefSeq ORF: 2637 bp

Locus ID: 330890

UniProt ID: [Q8CGT6](#)

Cytogenetics: 9 A2

Gene Summary: Plays a central role during spermatogenesis by repressing transposable elements and preventing their mobilization, which is essential for the germline integrity (PubMed:17395546, PubMed:18381894, PubMed:18922463, PubMed:26669262, PubMed:22020280). Acts via the piRNA metabolic process, which mediates the repression of transposable elements during meiosis by forming complexes composed of piRNAs and Piwi proteins and governs the methylation and subsequent repression of transposons (PubMed:17395546, PubMed:18381894, PubMed:18922463, PubMed:26669262, PubMed:22020280). Directly binds piRNAs, a class of 24 to 30 nucleotide RNAs that are generated by a Dicer-independent mechanism and are primarily derived from transposons and other repeated sequence elements. Associates with secondary piRNAs antisense and PIWIL2/MILI is required for such association (PubMed:17395546, PubMed:18381894, PubMed:18922463, PubMed:26669262, PubMed:22020280). The piRNA process acts upstream of known mediators of DNA methylation (PubMed:17395546, PubMed:18381894, PubMed:18922463, PubMed:26669262, PubMed:22020280). Does not show endonuclease activity (PubMed:22020280). Plays a key role in the piRNA amplification loop, also named ping-pong amplification cycle, by acting as a 'slicer-incompetent' component that loads cleaved piRNAs from the 'slicer-competent' component PIWIL2 and target them on genomic transposon loci in the nucleus (PubMed:22020280). In addition to its role in germline, PIWIL4 also plays a role in the regulation of somatic cells activities. Plays a role in pancreatic beta cell function and insulin secretion (By similarity). Involved in maintaining cell morphology and functional integrity of retinal epithelial through Akt/GSK3alpha/beta signaling pathway (By similarity). [UniProtKB/Swiss-Prot Function]