

Product datasheet for **MG224478**

Nin (NM_008697) Mouse Tagged ORF Clone

Product data:

Product Type:	Expression Plasmids
Product Name:	Nin (NM_008697) Mouse Tagged ORF Clone
Tag:	TurboGFP
Symbol:	Nin
Synonyms:	3110068G20Rik; AI385615; AU024711; mKIAA1565
Mammalian Cell Selection:	Neomycin
Vector:	pCMV6-AC-GFP (PS100010)
E. coli Selection:	Ampicillin (100 ug/mL)
ORF Nucleotide Sequence:	>MG224478 representing NM_008697 Red=Cloning site Blue=ORF Green=Tags(s)

TTTTGTAATACGACTCACTATAGGGCGGCCGGAATTCGTCGACTGGATCCGGTACCGAGGAGATCTGCC
GCC**CGATCGCC**

ATGGATGAGGTGGAGGAGGACCAGCATGAAGCCCGACTCAAGGAGCTGTTTGACAGTTTTGACACCCTGG
GAACTGGGTCTCTGGGTCAAGAGGAGCTCACTGACCTCTGCCACGTGCTGTGCTTGGAGGATGTGGGCC
GGTGTGCAACAGACGCTACTCCAGGACAACCTTTGGGCAGGGTACATTTTGACCAATTTAAAGAAGCA
TTAATACTTATCTGTCTAGAACTCTATCCAGTGAGGAGCACTTTGAGGAGTCAGACTGTCCCCAGAAG
CTCAGCCCAAATATGTTAGAGGTGGGAAGCGTTATGGACGAAGATCACTGCCGAGTTTCAAGAGTCTGG
GGAAGAGATCGAGGAGGTGACAGTGCTTGAGCCACTAGAGGAAGAAGCGAGGTCATCACCCATCCCAGCT
GGGACTGCGGCCGAGCACTGGAAGACACAACGCAGTGAGGAGTATGAAGCAGAAGGCCAGCTGAGGTTTT
GGAACCCAGATGACCTGAATGCTTCACATGGTGGGTCTTGCCCTCCTCCAGACTGGATAGAAGAGAACT
GCAAGAGGTTTGTGAAGATCTGGGGATCACTCGAGATGGTCACCTGAACCGGAAGAAGCTGGTTTCCATC
TGCGAACAGTATGGATTACAGAAATGTGGATGGAGCGATGCTGGAAGAGGTGTTTCTCAGCCTTGATCCC
ATGGAACAATGAGTGTGGAAGACTTTTTCTATGGTCTGTTAAGACTGGAAAATCTCTCACACCATCAGC
ATCTACTCCCTATAGACAACGAAACGGCATCTCTATGCAGTCTTTTCGATGAGAGTGGACGGCGGACC
GCAACCTCGTCAGCAATGACGAGTACCATTTGGCTTCCGGTCTTCTCCTGCTTGGATGACGGGATGGCC
AGGCGTCTGTGGAGAGGATACTGGACACCTGGCAGGAAGAAGGCATTGAGAACAGTCAGGAGATTCTGAA
GGCCCTGGATTTGAGCCTGGATGGAACATCAACCTGACAGAGCTGACACTGGCTCTGGAGAATGAACTT
TTGGTTACCAAGAATGGCATTACCAGGCAGCACTAGCTAGCTTCAAGGCCGAGATCCGGCACTTGTAG
AACGAGTTGACCAAGTAGTCAGAGAAAAGGAGAAGCTACGGTCGGACCTGGACAAAGCAGAAAAGCTGAA
GTCTCTCATGGCTTCCGAGGTGGACGATCACCACGCGCCATTGAGCGGAGGAATGAATACAACCTCAGG
AAACTGGATGAAGAATACAAGGAGCGCATAGCAGCCTTAAAGAACGAACTCCGCCAGGAGAGGGAACAGA
TGTTGCAGCAAGTGGCAAGCAGCGGTGGAGCTGGAACAGGAAATCAAAGGCCAAGACGGAAGAGAA
TTACATCCGGACCGCTTGCCCTCCTCCTGAAGGAAAACAATCGCCTGGAGACTGAGCTTCTGGAAAAC



[View online »](#)

GCAGAGAAGTTGGCAGAGTACGAGAGCCTGACGCAGAAGCTCCAGCGCAGTTTGGAAAATGTGTTAGCAG
AAAAGTTTGGTGACCTCGATCCCAGCAGTGTGAGTTCTTTCTTCAAGAGGAGAGGCTGGCGCAGATGAG
AAATGAATATGAGCAACAGTGCAGGCTATTACAAGACCAAGTGGATGAGCTTCAGTCTGAACTAGAAGAA
TACCAGGCTCAAGGCAGGGTGTCTGAGCTCCCTTGAAGAACTCGCTGTGAGAAGAACTCGACGGTCACA
GTGGTGGTATTGAGCCCGACCAAGGGCTGGATCTGAAGAGTGAACCCCTGAATATGAGCATTGAGGC
AGAGCTGGTTCATCGAGCAGATGAAGGAGCAGCACCACCGGACCTGTGTACCTGAGACTGGAGCTGGAA
GACAAAGTGCGCCACTATGAAAAGCAGCTGGATGATACCAAGGGTGCCTCTGAACAGGAGCAGCGGCCA
TGAAAGCAGAAGTATGAGCAGGGAGTGCACACCTTGGAGAAGCGAGTCAAGCGAGCTTCGGAGTGAATTGC
AGACCTGGAAGGGCAGGCAGCCGTGCTGAGGGAGGCCACCACAAGGCCAGCTGCAGGCACGAGGAGGAA
AAGAGACAACGCAATGGCGTTTCGATGAGGAAAAGGCTCAGCTCCAGGAGGAGCTGCGGCAGGAGCATG
AGAGGGAGCTCCAGGCCAGGCTGCAGCAGGCAGCGGAGAGCTTTCGCCAGGAGAGAGAGGGACTCGCCCA
GGCTGCCTGGACTGAGGAGAAGGTGAGAGGCTTGGAGCAATCTTACCAGGAGCAGCTGCTGAGCCTGGAG
GAGAAGCATGCTCTAGAGAAAGAAGAGCTGAGGGAAGAGCTCTCGGAACATCACCGAAGGAACTCCAGG
AGGGAAGGGAAGAAATGAAAACAGAGTGAATAGAAGAGTCTCTCAGATAGAAGCCAGTCCAGGCTGA
CTGTGAGAAAGTCACTGAGCACTGTGAACAACTCTGCAAGCCTCGAGGTTCCGCCACCGCCAGGAGCTG
AGGGACCTCTTGACCAGCACCTGGAGGAAAGGTCTCAGTGGGAGTTTGAAGAAGGATGAGCTTACACAAG
AGTGCACAGATGCCAGGAGCAGCTGAAGGAGGCGCTCCAGAGGGAGAGGGCGACCCGCTGCGGCCATGAA
GCAGGAACAGGAGATACTGGAGAGGACATACAAGGACCGTTTGAATATCCTGAGCACGAAAAGAGAGCAG
CTGCTGCAAGACCTGAAAGACCTACAGAACGCATCTGAGAGCCAGCATGGCCTCCTGTCTGGCCAGATAC
TTGAGCTGAAGAGAAGTCAAGGAGAGAGAACTGAGGGACCAAGGGCAGGCGCTATGCCAGACGGGGTCTC
TGAGCAGCTGGCCAGCCAGCAGCTCGAAAGGCTCCGGTTGAGCATGAGCAAGAGAGGGCGAGAAATGACG
GGCAAGCTTCCCGCCTGGAGAGCGCCACAGAGCAAGCCTTGAAGAGCAGATCAAGAGAAGCGGAGAG
TGACACAGAAATCTGCAGGCTTCAAGATACAGTCAAGGACATGCAGCAGGCAGCATCTCTTTGATGCT
TCAGGGTGGCTGCCAGGCAACGGCAGGGAGGAGGAGGAGAGAGATGGAGCCATGTCCCTGCTTCAGCAA
GGCGAGCAGCTATTGGAAGAAAACGAGATGTCCTCATCAGCCTGCAGAGAGCTCACGAGCATGCAGTGA
AGGAAAATGCAAAGATGGCTACTGAAATTTACCGATTGCAGCAGAGGCTGAAGAAGTTAGAGCCGGGGTCT
GGTGATCTCGTCTGTTTGGAGGAGGGGACGTCTGAGATTTCTGGAAGTCCAGGGAACAAGTAGAACCC
ATAATGAAACAAGGTCCAGCCACCAAGCACTTCTGAGCGATCTAGGAGACCACGAGGCCCGGGACCTGG
CAAGTACCGGGACAAGCTCTGTTGAGAGGAGGAGTGCAAAACCGAGGCGTCCGGAAGCTTCCCTGGACTG
CTTTTCTGAGCTTGAACACAGTGAAGACACCAGGACCGAGTCTGGGACCTCAAGAGTCAAGTCAAGCCAG
CTTCGGGAGCAACTGACGGTCTTGCAGCAGACTGCGATCGGGCTTCGAGAGGAAACAGGACCTGCTTT
TCGATATCTCTGTGCTGAAAAGAACTGAAGATGCTGGAGAGACTCCCGGAGGCATCTCCAGGTATAA
GGTATTATACGAGGATGCCGCCGAGAAAACCTCTGCCTTCAGGAGGAGCTGAGACTTGTAGAGACGCGC
TACGAGGAGTTCGCTGGACAGCAACAAGAGCTCACGGCGGAGGTCTACAGGTTGCAGGATGAGATGAAGA
AAATGGAGGAGGTGATGGAGACGTTCTCAGCCTGGAGAAGAGTTACGATGAGGTCAAAGTGGAAAATGA
GGAACCTCCGTGCTCTGGTGTGAGACTTCAAGGGAAGATGGAGAAGGTGCTGGGAAGGGCCCGCCTGCAG
GGTGACAGCTACGCCCTCTGGGAAGCCCTTCAAGAACTGGAGGTCCGCTCGGATGAAAAGATGCTTG
AACTCCGTGAGCTCCGAAAGAGTGTACGCCAAGGTCTGAGCATGCACCACATCATAGAAGAGTGTAC
ACAAGAAACCCAGTGTGTGAGCAGGGAAGCAGCAAGCTCTAGCTAGAATAAAAGCACACGAAATCGCC
TGTTCCACAGAGCAATTAAGACACATCCGAAAAGCCTAGCGCGCAGAACCAGTCAATCCCGAGGGAA
GTGCTGCTCTCCTAGGCCTACAAGACAAGCATCTTCAAGCAGGAGGCCACCATCGCAGAGTTAGAAGTGA
GAAGCAAAAGCTACAGGAGCTGACTAGAAATCTGAGGGAGCGAGTCACTGCACTAGTTAGGCAAAAAGAC
GCCCTTCTCAAGGGCAGAAGGAGGAGGAGCTGAAGGCAATGATGCAGGACCTGCAGATCACGTGCGGGG
AGATGCAGAGGAAGGTTGAACTCCTGAGATATGAATCTGAAAAGCTTCAAGAGGAAAATCTATTTTGA
AAATGAAATTAATACTTTAAATGAAGAAGATAGCATCTCTAACCTGAAATGGAGGAATTAATGGCTCT
CAGGAAGAATTGTGCAGAAAATAGAAACCATAGAGCAGGAAAAGCTTCAATTCAGACAATGGTTGAAA
AATTAAGAAACAGGTTTCAAGTTTAAAAATCAAAAACCAACAGTTGGATTCAAGAAAATATAGAAGTCA
CCAAAAGAACTCCAAAACAAGGAAGAACTGAAAACCTTAATCAACGTCTGGCAGAAATGCTGTGCCAG
AGGGAGGAGCCAGGAGCTTGACCTCTGAGAAATGGGAACAAGAAAATGCAAGCCTCAAAGAAAGAACTGG
ATCACTACAAAGTGCAGACTTCCACTTTGGTGTCTTCTTGGAGGCAGAACTTCCGAAAGTTAAACTGCA
GACTCACGTCAAGGAGCAGGAAAACCTCCTTCTCAAAGATGAACTGGAGAGACTGAAGCAACTGCACAGA
TGTCTGACCTCTGACTTCCAGCAAAAATGTCTAGCATTCTAAGCTACAATGAAAACCTGCTGAAGG

AAAAAGAAGTTCTGAGTGAAGAGTTAAAGAGCTGTGCAGATAAGCTGGCAGAGTCAAGCCTCTTAGAGCA
 CAGAATTGCTACAATGAAGCAGGAGCAGACCGCCTGGGAAGAGCAGAGTGAGAGCCTGAAGTCACAGCTG
 GCAGTGTGCGAGGCAAAGGTTTCAAGACTTAGAAGATGTCTGCAGAAATGTCAACCTTCAGATGGCTGAGA
 TTGAATCAGATCTCCAAGTGACTCGACAGGAAAAGGAGGCGCTAAAGCAGGAAGTGATGTCATTACACAG
 ACAGCTTCAGAAATGCCATTGATAAAGACTGGGTCTCGAAACAGCTCCCCATCTCTCAGGGCTCCGGGGC
 CAGCAGAGAAGGCTGTCTGGGACAAACTGGACCATCTGATGAATGAGGAACACAGCTGTTTTGTCAAG
 AAAGCAAGAGACTCCAGACTGTGGTACAGAATACCCAAGCAGATCTCACCCTCCCGGGAGAAGGTCCG
 TCAACTGGAATCCAACCTCCTTCCACCAAACCAAAAAACAACCTCAACCAACCATGTACTGTGAAGTCC
 ACAGAACAAGAAAACTGACCTTAAAGAGAGAGTGAACAGTCTCAGAAAAGAACAATCTCTACCAGCA
 GGAAGGTGGGTCAGATGGGTTCCCTTGAGCGAGGATTAGAAAACAATCCATTTGAAAAACGAAGTCTGAA
 GAAGAAACAGGTGAGACTGGACGAGAAGCTAATGGAGATGCAGCCCTGAGGTCCACTGTGACGCGTAGC
 CCATCCTCTCACTGGGATCTGCAGTTGCTCCAGCAGCAAGCTGTCCGATGGTCCCAGGGAGCAGTTTC
 TGCAGCTTCAACAGCAGCTGCTGCAGGCAGAAAAGAGAAGCCAGCACCTGCAGGAGGAGCTCGAAAAACAG
 AACCTCCGAAACCAACACACCACAGGCTTGTACTGGAGCAGCAGCTGTGCATGCAGATCTCTGCAGA
 AGGATTGGGCACCTC

ACGCGGCCGCTCGAG - GFP Tag - GTTTAA

Protein Sequence:

>MG224478 representing NM_008697
 Red=Cloning site Green=Tags(s)

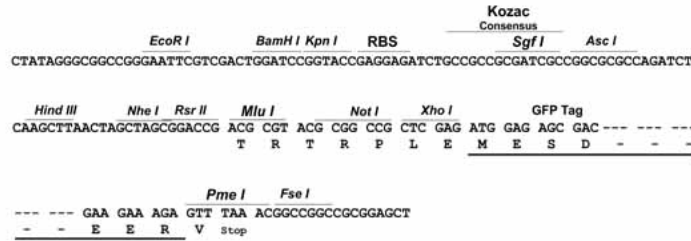
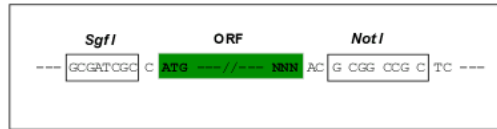
MDEVEEDQHEARLKELFDSFDLTGTGSLGQEELTDLCHVLCLEDVGPVLLQTTLLQDNLLGRVHFDQFKEA
 LILILSRTLSSSEHFEESSDCSPEAQPXYVRGGKRYGRRSLPEFQESGEEIEEVTVLEPLEEEARSSPIPA
 GDCGEHWKTQRSEYEAEQGLRFWNPDDL NASHGGSCPPPDWIEEKLQEVCELDGITRDGHLNRKLLVSI
 CEQYGLQNVGDGAMLEEVFLSLDPDGTMSVEDFFYGLFKTGKSLTPSASTPYRQLKRHLMSQSFDESGRR
 ATSSAMTSTIGFRVFSCLDDGMGQASVERILDTWQEEGIENSQEILKALDFSLDGNINLTELTLALENEL
 LVTKNGIHQALASFKAERHLLERVDQVREKEKLRSDLDKAEKLSLMASEVDDHAAIERRNEYNL
 KLDEEYKERIAALKNELRQEREQMLQQVGKQRVELEQEIQKAKTEENYIRDRLALSLKENRLETELLEN
 AEKLAEYESLTQKLQRSLENVLAEKFGDLDPSSAEFFLQEERLAQMRNEYEQQRLLQDQVDELQSELEE
 YQAQGRVLRPLKNSLSEELDGHSGGIEPDQGGSEECNPLNMSIEAELVIEQMKEQHHRDLCHLRLELE
 DKVRHYEKQLDDTRVASEQEQAAMKQKYEQGVHTLEKRVSELRSEIADLEGQAAVLRHAAHKASCRHEEE
 KRQLQMAFDEEKAQLQEELRQEHRELQARLQQAESFRQEREGLAQAAWTEEKVRGLEQSYQEQLLSLE
 EKHALEKEELREELSEHHRRELQEGREEMETECNRRVSQIEAQCCADCEKVTEHCEQTLQSLVHRHQEL
 RDLLDQHLLEERSQWFEKDEL TQECTDAQEQLKEALQRERATAAAMKQEQEILERTYKDRNLNSTEREQ
 LLQDLKDLQNASQHGGLSGQILELKRQERELRDQGGALCQTGVSEQLASQQLERLRVEHEQERREMT
 GKLAALSAHRASLERADQEKAEEMSTEICRLQNTVKDMQQAASLLMLQGGCQATAGEEAEGDGAMSLQ
 GEQLLEENGDLISLQRAHEHAVKENAKMATEIYRLQQRLLKLEPGSVISSCLEEGTSEISGSSREQVPEP
 IMKQGPATKHFLSDLGDHEARDLASTGTSSVQRQECKTEASEASLDCFSELENSEDTRTESWDLKSQISQ
 LREQTLVLRADCDRASERKQDLDFDISVLKKKLKMRLERLPEASSRYKVL YEDAARENSCLQEELRLVETR
 YEESLDSNKELTAEVYRLQDEMCKMEVMEFLSLEKSYDEVKVENEELRALVLRQGMKMEVLRGAAALQ
 GDSYALWEAPSENLEVASDEKMLELRQTPKECTPKVVMHIIIEECTQETQCCEQGSTKLLARIKAHEIA
 WFHRAIKTHPEKPSAQNRIPEGSAALLGLQDKHLQQEATIAELELEKQKLQELTRNLRRVTRALVRQKD
 APSQGQKEEELKAMMQDLQITCGEMQRKVELLRYESEKLQEENSILRNEITTLNEEDSISNLKLEELNGS
 QEELWQIETIEQEKASIQTMVEKLLKQVSDLKIKNQQLDSENIELSQKNSQNKEELKTLNQRLAEMLCQ
 REEPGACTSEKWEQENASLKEELDHYKVTSTLVSSLEAELSEVKLQTHVMEQENLLKDELERLKLHR
 CPDL SDFQKMSILSYNEKLLKEKEVLSEELKSCADKLAESSLLEHRIATMKQEQTAWEEQSESLKSQ
 AVSQAQVQNLLEDVLRQVNLQMAEIESDLQVTRQKEALKQEVMSLHRQLQNAIDKDWVSETAPHL SGLRG
 QQRRLSWDKLDHLMNEEPQLFCQESKRLQTVVQNTQADLTHSREKVRQLESNLLPTKHQQLNQPCVKS
 TEQEKLTLLKRECEQSKEQSPTS SRKVGQMGSLERGLT IHLNEGLKKKQVRLDEKLMEMQPLRSTVTRS
 PSSHWDLQLLQQACPMVPREQFLQLQQQLLQAEKRSQHLQEELNRTSETNTPQALLLEQRAVHADSCR
 RIGHL

TRPLE - GFP Tag - V

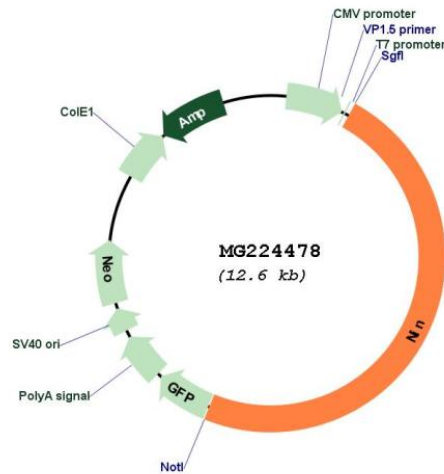
Restriction Sites: SgfI-NotI

Cloning Scheme:

Cloning sites used for ORF Shutting:



Plasmid Map:



ACCN: NM_008697

ORF Size: 6105 bp

OTI Disclaimer: The molecular sequence of this clone aligns with the gene accession number as a point of reference only. However, individual transcript sequences of the same gene can differ through naturally occurring variations (e.g. polymorphisms), each with its own valid existence. This clone is substantially in agreement with the reference, but a complete review of all prevailing variants is recommended prior to use. [More info](#)

OTI Annotation: This clone was engineered to express the complete ORF with an expression tag. Expression varies depending on the nature of the gene.

Components: The ORF clone is ion-exchange column purified and shipped in a 2D barcoded Matrix tube containing 10ug of transfection-ready, dried plasmid DNA (reconstitute with 100 ul of water).

Reconstitution Method:

1. Centrifuge at 5,000xg for 5min.
2. Carefully open the tube and add 100ul of sterile water to dissolve the DNA.
3. Close the tube and incubate for 10 minutes at room temperature.
4. Briefly vortex the tube and then do a quick spin (less than 5000xg) to concentrate the liquid at the bottom.
5. Store the suspended plasmid at -20°C. The DNA is stable for at least one year from date of shipping when stored at -20°C.

RefSeq: [NM_008697.2](#), [NP_032723.2](#)

RefSeq Size: 6708 bp

RefSeq ORF: 6108 bp

Locus ID: 18080

UniProt ID: [Q61043](#)

Cytogenetics: 12 C2

Gene Summary: Centrosomal protein required for the positioning and anchorage of the microtubule minus-end in epithelial cells (PubMed:15784680, PubMed:10934040). May also act as a centrosome maturation factor (By similarity). May play a role in microtubule nucleation, by recruiting the gamma-tubulin ring complex to the centrosome (PubMed:15784680). Overexpression does not perturb nucleation or elongation of microtubules but suppresses release of microtubules (By similarity). Required for centriole organization and microtubule anchoring at the mother centriole (By similarity).[UniProtKB/Swiss-Prot Function]