

Product datasheet for **MG224446**

Itga7 (NM_008398) Mouse Tagged ORF Clone

Product data:

Product Type:	Expression Plasmids
Product Name:	Itga7 (NM_008398) Mouse Tagged ORF Clone
Tag:	TurboGFP
Symbol:	Itga7
Synonyms:	al; alpha7; [a]; [a]7
Mammalian Cell Selection:	Neomycin
Vector:	pCMV6-AC-GFP (PS100010)
E. coli Selection:	Ampicillin (100 ug/mL)
ORF Nucleotide Sequence:	>MG224446 representing NM_008398 Red=Cloning site Blue=ORF Green=Tags(s)

TTTTGTAATACGACTCACTATAGGGCGGCCGGAATTCGTCGACTGGATCCGGTACCGAGGAGATCTGCC
GCC**CGATCGCC**

ATGGCCAGGATCCGAGGTGCGATTTTCTCCGGCCCCCGGAATCTACTATCTTATTACTTCCTTGCTCG
CTGGACTGTTCTTACCACCGCTATCGCCTTCAATCTGGATGTGATGGGTGCCATACGCAAGGAGGGAGA
ACCCGGCAGCCTATTCGGCTTTTCGGTGGCCCTGCACCGACAATTACAGCCCCGACCCAGAGCTGGCTG
CTGGTGGGCGCTCCCGAGCCCTGGCTCTTCTGGACAGCAGGCAAACCGCACCGGAGGCCTCTTGCTT
GTCCCTGAGCCTAGAGGAGACAGATTGCTACAGAGTGGACATTGACAGGGGAGCTAACGTGCAGAAGGA
GAGCAAGGAGAACAATGGCTGGGAGTCAGTGTCCGGAGCCAGGGGCCAGGGGCAAGATTGTTACGTGT
GCACACCGATATGAGTCTCGACAGAGAGTGGACCAGGCTTTGGAGACTCGGGATGTGATTGGCCGCTGT
TTGTGCTAAGCCAGGACCTGGCCATCCGTGATGAGCTGGATGGTGGGAGTGGAAGTTCTGTGAGGGGCG
CCCCAGGGCCATGAACAGTTTGGGTTCTGTCAGCAGGGCACAGCTGCCACCTTCTCCCTGACAGTCA
TACCTCGTCTTTGGGCTCCAGGAACCTATAACTGGAAGGGTTGCTTTTTGTGACCAACATTGATAGCT
CAGACCTGACCAGCTGGTGTATAAACTTTGGACCTGCTGACCGGCTCACAGGACCAGCCGAGACTT
GACCTTGAATAGCTATTTAGGTTTCTCCATCGATTCTGGGAAGGGTCTTATGCGCTCAGAAGAGCTGAGT
TTTGTGGCAGGGGCCACGTGCCAACCAAAAGGGCTGTGGTCACTTCTGCGCAAGGATAGCCAGCC
GCTTGATACCTGAGGTTGTGCTGTCTGGGAGCGCCTGACCTCTGGCTTTGGCTACTCACTGGCTGTGAC
TGATCTCAACAATGATGGCTGGGAGACCTGATTGTGGTGGCCCTACTTCTTTGAACGCCAAGAAGAG
CTGGGAGGTGCTGTATGTGTACATGAACCAGGGTGGCCATTGGGCAGATATCTCTCTCCGAATCT
GTGGCTCCCTGATTCCATGTTTGGGATCAGTTTGGCTGTATTGGGGACCTCAACCAAGATGGCTTCCC
AGACATTGCCGTGGGAGCTCCCTTTGACGGAGATGGGAAGGTCTTTATCTACCATGGGAGCAGCCTTGGG
GTGGTTGTCAAACCTTACAGGTGCTGGAGGGCGAGGCGGTGGGTATCAAGAGCTTTGGTTACTCCCTGT
CTGGTGGCCTGGATGTGGATGAAATCACTACCCAGACCTGCTTGTGGGCTCCCTGGCTGATACCGCTGC
TCTGTTACAGGCCAGACCTGTTCTACATGTCTCCAAGAGATCTTATTGACCCAGAGCCATCGATCTG



[View online »](#)

GAACAACCCAAGTGTGCCGATGGACGCTTGGTCTGTGTGGACATAAAGATCTGTTTCAGCTATGTCGCTG
 TGCCACAGCTACAGCCCTAGTGTGGCCTTAGATTATATGTTAGATGGGGACACAGACCCGAGGCTCCG
 GGGCCAGGTTCCACGTGTGACGTTTCTGAGCCGAGGCCTGGATGACCTCAGGCATCAGTCTCCGGCACC
 GTGTGGCTGAAGCACAACATGACCCGAGTCTGTGGAGATACTGTGTTCCAGCTGCAGGAAAACGTCAAAG
 ACAAGCTACGGGCCATTGTGGTACCCTGTCATATGGTCTCCGAACCCCTCCATTAGGGAGGCAAGCACC
 TGGCCAGGAGCTCCCACTGTGGCTCCCATCCTCAATGCTCACCAGCCCAGCACCAGGAGTATGAGTATC
 CACTTTTGAAGCAAGGCTGCGGTGAAGATAAGATCTGTGAGCAACCTCCAGCTCGAGCGGTACCACT
 TCTGTTCCAGGATCAGCGACACAGAGTTCCAGGCTCTGCCATGGATCTGGATGGAAGGACCGCCCTGTT
 CGCATTGAGTGGGACGCGTTCATAGGCCCTGAACTGACAGTACCAACCTGCCCTCTGACCCTGCCCGG
 CCTCAGGCAGATGGGGATGATGCTCATGAAGCACAGCTCTTGGTCACTCTCCAGCCTCTCTACGGTACT
 CAGGAGTCCGTGCTCTGGACTCTGTGGAGAAGCCGCTCTGCCTGTCCAATGACAGCGCCTCTCATGTCGA
 GTGTGAGCTGGGAACCCATGAAGAGAGGCGCTCAGGTCACTTTTTACCTATCCTCAGCACCTCTGGG
 ATCACTATTGAGACCACAGAGCTGGAGGTGAAATTGCTGTAGCCAGCATCAGTGAAGCAGGAGCTGGATC
 CGGTCTCCGTTCCGGCTCATGTCTTCATTGAATTGCCACTGTCCATTTCCAGGGTGGCCACTCCCAGCA
 ACTCTTCTCTCTGGCGAGGTGAAGGGCAAAGTCCATGCGATCTGAGAGGGACGTGGGCAGCAAAGTC
 AAGTATGAGGTACGGTCTCCAATCAAGGCCAGTCTCTCAATACTCTGGGCTCTGCGTTCCTCAACATCA
 TGTGGCCCCACGAGATCGCAATGGAAAGTGGCTGCTGTACCCCATGCGGGTAGAGCTGGAGGGCGGACA
 GGGCCTGGCAAGAGAGGGATCTGTTCCCAAGACCCAACATCCTCCAGCTGGATGTGGACAGCAGGGAT
 AGGAGGCGCGAGAGCTGGGACGCCGAGCCGAGGAGCCTCCAGAGAAGTGGAGCCTAGCACATCCT
 GGTGGCCAGTGTCTCTGCTGAGAAGAGAAACGTGACTCTGGACTGCGCCAGGGCAGCGCAAGTGTGT
 GGTGTTACAGTGGCCACTCTACAGCTTTGATCGTGCAGCCGTGCTTACGCTCTGGGGCCGCTCTGGAAC
 AGCACCTTTCTGGAGGAGTACATGGCCGTGAAATCCCTGGAAGTATCGTCCGAGCCAACATCACAGTGA
 AATCCTCCATTAAGAATTGTTGCTCAGAGATGCATCCACAGTATCCAGTATGGTGTACTTGGACCC
 CATGGCCGTGGTTGTGGAAGGAGTCCCCTGGTGGTTCATCTCCTGGCAGTGTGCTGGCTGGTGTAGTC
 CTGGCCTTGTGCTACTGCTGCTGTGGAAGCTGGGATTCTTCAAGCGGGCAAGCACCCCGAGGCCACCG
 TGCCCCAGTACCACGAGTGAAGATCCCTCGGGAAGACCAGCAGGATCAAGGAGGAGAAGACAGGCAC
 CATCCAGAGGAGTAACTGGGGCAACTCCCAGTGGGAGGGTCCGACGCACACCCCATCTTGGCTGCCGAC
 TGGCATCTGAGCTGGTCTGATGGACATCCGGTCCAGCCACTGCC

ACGCGTACGCGGCCGCTCGAG – GFP Tag – GTTTAA

Protein Sequence:

>MG224446 representing NM_008398
 Red=Cloning site Green=Tags(s)

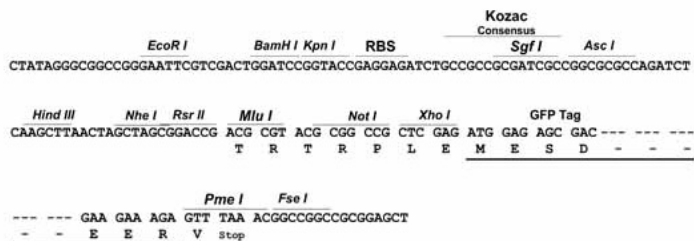
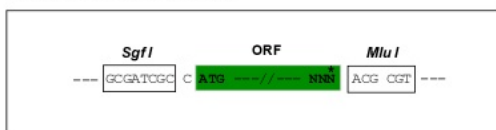
MARIPRCDFLRPPGIYYLITSLLAGLFLPPAIAFNLDVMGAIRKEGEPGSLFGFSVALHRQLQPRPQSWL
 LVGAPQALALPGQQANRTGGLFACPLSLEETDCYRVDIDRGANVQKESKENQWLGVSVRSQGPGGKIVTC
 AHRYESRQRVDQALETRDVIIGRCFVLSQDLAIRDELGGGEWKFCEGRPQGHEQFGFCQQTAAATFSPDSH
 YLVFGAPGTYNWKGLLFTVNIDSSDPDQLVYKTLDPADRLTGPAGDLTLNSYLGFSIDSGKGLMRSEELS
 FVAGAPRANHKGAVVILRKDSASRLIPEVVLSEGERLTSFGYSLAVTDLNNDGWADLIVGAPYFFERQEE
 LGGAVVYVMNQGGHWADISPLRICGSPDSMFGISLAVLGDNLNQGFPDIAVGAFFDGDGKVFYIYHSSSLG
 VVVKPSQVLEGEAVGIKFSFGYSLSGGLDVDGNHYPDLLVGLADTAALFRARPVLHVSQEIFIDPRAIDL
 EQPNCADGRLVCVDIKICFSYVAVPSSYSVALDYMLDGDTRRLRGQVPRVTFSLRGLDDLHQSSGT
 VWLKHQHDRVCGDVFQQLQENVKDKLRAIVVTLSYGLRTPPLGRQAPGQELPTVAPILNAHQPSQRTETI
 HFLKQCGGEDKICQSNLQLERYQFCRSISDTEFQALPMDLDGRTALFALSGQPFIGLELTVTNLPSDPAR
 PQADGDDAHEAQLLVTLPASLRYSGVRALDSVEKPLCLSNDSASHVECELGNPMKRGAQVTFYLILSTSG
 ITIETTELEVKLLLATISEQELDPVSVRAHVFIELPLSISGVATPQQLFSSGEVKGESAMRSERDVGSKV
 KYEVTVSNQGSNLTLSAFLNIMWPHEIANGKWLLYPMRVELEGGQGPGRGICSPRPNILQLDVSARD
 RRRRELGOPEPQEPPEKVEPSTSWVPVSSAEKRNVTLDCAQGTAKCVVFSCLPYSDRAAVLHVWGRLLN
 STFLEEYMAVKSLEIVRANITVKSSIKNLLLRDASTVIPVMVYLDPMVAVVEGVPWWVILLAVLAGLLV
 LALLVLLLWKLGFKRAKHPEATVPQYHAKIPREDRQQFKEEKTGTIQRSNWGNQWEGSDAHPILAAD
 WHPELGPDPGHPVATA

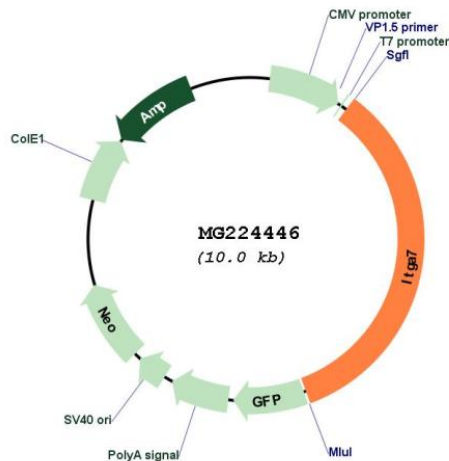
TRTRPLE – GFP Tag – V

Restriction Sites: SgfI-MluI

Cloning Scheme:

Cloning sites used for ORF Shuttling:



Plasmid Map:


ACCN: NM_008398

ORF Size: 3408 bp

OTI Disclaimer: The molecular sequence of this clone aligns with the gene accession number as a point of reference only. However, individual transcript sequences of the same gene can differ through naturally occurring variations (e.g. polymorphisms), each with its own valid existence. This clone is substantially in agreement with the reference, but a complete review of all prevailing variants is recommended prior to use. [More info](#)

OTI Annotation: This clone was engineered to express the complete ORF with an expression tag. Expression varies depending on the nature of the gene.

Components: The ORF clone is ion-exchange column purified and shipped in a 2D barcoded Matrix tube containing 10ug of transfection-ready, dried plasmid DNA (reconstitute with 100 ul of water).

Reconstitution Method:

1. Centrifuge at 5,000xg for 5min.
2. Carefully open the tube and add 100ul of sterile water to dissolve the DNA.
3. Close the tube and incubate for 10 minutes at room temperature.
4. Briefly vortex the tube and then do a quick spin (less than 5000xg) to concentrate the liquid at the bottom.
5. Store the suspended plasmid at -20°C. The DNA is stable for at least one year from date of shipping when stored at -20°C.

RefSeq: [NM_008398.2](#), [NP_032424.2](#)

RefSeq Size: 4035 bp

RefSeq ORF: 3411 bp

Locus ID: 16404

Cytogenetics: 10 77.2 cM

Gene Summary:

This gene encodes a member of the integrin family of cell surface proteins that mediate cellular interactions with the extracellular matrix and other cells. The encoded transmembrane protein is the alpha subunit that forms a noncovalent heterodimer with the beta subunit to form the functional integrin receptor that binds to laminin. Mice lacking the encoded protein exhibit symptoms of progressive muscular dystrophy, impaired axonal regeneration and cerebral vascular defects. [provided by RefSeq, Aug 2016]