

Product datasheet for **MG224443**

Slamf6 (NM_030710) Mouse Tagged ORF Clone

Product data:

Product Type: Expression Plasmids
Product Name: Slamf6 (NM_030710) Mouse Tagged ORF Clone
Tag: TurboGFP
Symbol: Slamf6
Synonyms: KAL1; KAL1b; Ly108; NTB-A; NTBA; SF2000
Mammalian Cell Selection: Neomycin
Vector: pCMV6-AC-GFP (PS100010)
E. coli Selection: Ampicillin (100 ug/mL)
ORF Nucleotide Sequence: >MG224443 representing NM_030710
 Red=Cloning site Blue=ORF Green=Tags(s)

TTTTGTAATACGACTCACTATAGGGCGCCGGGAATTCGTCGACTGGATCCGGTACCGAGGAGATCTGCC
 GCC**CGATCGCC**

ATGGCTGTCTCAAGGGCTCCAGCACCCGACTCCGCCTGTCAGAGGATGGTCTGGCTCTTTCCACTTGTCT
 TCTGCCTCGGCTCAGGGAGTGAAGTTTCACAGAGCAGCTCAGACCCCGCTAATGAATGGCGTTCTAGG
 AGAGTCTGCAGTCTTCTCTAAAGCTTCTGCAGGGAAGATAGCCAATATCATCATCTGGAATTATGAA
 TGGGAAGCGTCACAAGTCACTGCCCTCGTTATCAACCTAAGTAATCCTGAAAGTCCAAATCATGAACA
 CTGATGTAAGAAGAGACTGAACATCACCCAGTCTACTCCCTGCAAATCAGCAACCTTACCATGGCAGA
 CACAGGATCATACACTGCGCAGATAACCACAAAGGACTCTGAAGTGATCACCTTCAAATATATTCTGAGG
 GTCTTTGAACGACTGGGTAACCTAGAACTACCACTATACTCTCCTGCTAGAGAATGGGACCTGCCAGA
 TACACCTGGCCTGTGTTTGAAGAATCAAAGTCAAAGTCTCAGTTGAGTGGCAAGCCACAGGAAACAT
 CTCTTTAGGAGGACCAATGTCATATCTTTGGGACCCGAGGAATTCGGTGACCAGACTTACGTCTGC
 AGAGCCAAGAATGCTGTCAGCAATTTGTCAGTCTCTGTTTCGACCCAGAGTCTCTGCAAAGGGTTCTAA
 CTAATCCACCCTGGAATGCAGTATGGTTTATGACTACAATTTCAATAATCAGTGTCTACTCATCTT
 TGTGTCTGGAGCATACATGTTTGAAGAGAAGAGGTTCTCTTCTTTGACTAGCCAACATCCAGAGTCC
 TCCAGAGCACAGATGGCCAGGCTCTCCAGGGAACACTGTGTATGCACAAGTCACTCGTCCAATGCAGG
 AAATGAAAATCCCAAACCTATCAAAAATGACTCCATGACAATTTACTCCATAGTTAATCATTCCAGAGA
 GGCCGAATACTCT

ACGCGTACGCGGCCGCTCGAG - GFP Tag - GTTTAA



[View online »](#)

Protein Sequence: >MG224443 representing NM_030710
 Red=Cloning site Green=Tags(s)

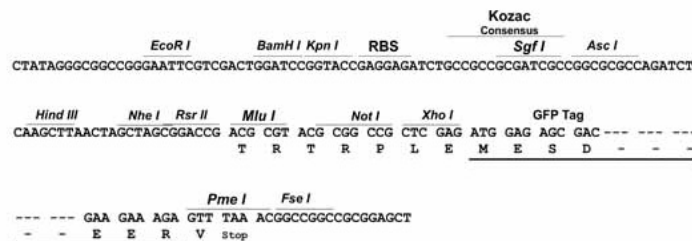
MAVSRAPAPDSACQRMVWL FPLVFCLGSGSEVVSQSSSDPQLMNGVLGESAVLPLKLPAGKIANIIWNYE
 WEASQVTALVINLSNPESPOIMNTDVKKRLNITQSYSLQISNLTMADTGSYTAQITTKDSEVITFKYILR
 VFERLGNLETTNYTLLENGTCQIHLACVLKNQSQTVSVEWQATGNISLGGPNVTFWDPNRNSGDQTYVC
 RAKNAVSNLSVSVSTQSLCKGVLTNPPWNAVWFMTTISIIISAVILIFVCSIHVWKRRGSLPLTSQHPES
 SQSTDGPGSPGNTVYVYQVTRPMQEMKIPKIPKINDSMTIYSIVNHSREAEYS

TRTRPLE - GFP Tag - V

Restriction Sites: SgfI-MluI

Cloning Scheme:

Cloning sites used for ORF Shuttling:



ACCN: NM_030710

ORF Size: 993 bp

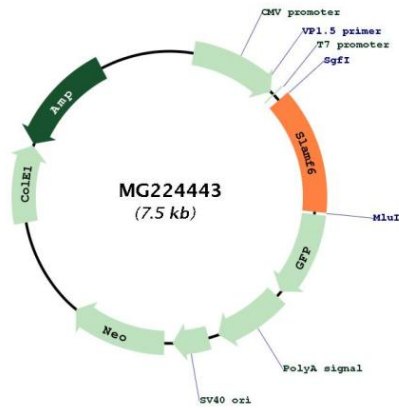
OTI Disclaimer: Due to the inherent nature of this plasmid, standard methods to replicate additional amounts of DNA in E. coli are highly likely to result in mutations and/or rearrangements. Therefore, OriGene does not guarantee the capability to replicate this plasmid DNA. Additional amounts of DNA can be purchased from OriGene with batch-specific, full-sequence verification at a reduced cost. Please contact our customer care team at custsupport@origene.com or by calling 301.340.3188 option 3 for pricing and delivery.

The molecular sequence of this clone aligns with the gene accession number as a point of reference only. However, individual transcript sequences of the same gene can differ through naturally occurring variations (e.g. polymorphisms), each with its own valid existence. This clone is substantially in agreement with the reference, but a complete review of all prevailing variants is recommended prior to use. [More info](#)

OTI Annotation: This clone was engineered to express the complete ORF with an expression tag. Expression varies depending on the nature of the gene.

| | |
|-------------------------------|--|
| Components: | The ORF clone is ion-exchange column purified and shipped in a 2D barcoded Matrix tube containing 10ug of transfection-ready, dried plasmid DNA (reconstitute with 100 ul of water). |
| Reconstitution Method: | <ol style="list-style-type: none">1. Centrifuge at 5,000xg for 5min.2. Carefully open the tube and add 100ul of sterile water to dissolve the DNA.3. Close the tube and incubate for 10 minutes at room temperature.4. Briefly vortex the tube and then do a quick spin (less than 5000xg) to concentrate the liquid at the bottom.5. Store the suspended plasmid at -20°C. The DNA is stable for at least one year from date of shipping when stored at -20°C. |
| RefSeq: | NM_030710.3 |
| RefSeq Size: | 2443 bp |
| RefSeq ORF: | 996 bp |
| Locus ID: | 30925 |
| UniProt ID: | Q9ET39 |
| Cytogenetics: | 1 79.54 cM |
| Gene Summary: | <p>Self-ligand receptor of the signaling lymphocytic activation molecule (SLAM) family. SLAM receptors triggered by homo- or heterotypic cell-cell interactions are modulating the activation and differentiation of a wide variety of immune cells and thus are involved in the regulation and interconnection of both innate and adaptive immune response. Activities are controlled by presence or absence of small cytoplasmic adapter proteins, SH2D1A/SAP and/or SH2D1B/EAT-2 (PubMed:19648922). Triggers cytolytic activity only in natural killer cells (NK) expressing high surface densities of natural cytotoxicity receptors (By similarity). Positive signaling in NK cells implicates phosphorylation of VAV1. NK cell activation seems to depend on SH2D1B and not on SH2D1A (By similarity). In conjunction with SLAMF1 controls the transition between positive selection and the subsequent expansion and differentiation of the thymocytic natural killer T (NKT) cell lineage (PubMed:18031695). Promotes T cell differentiation into a helper T-cell Th17 phenotype leading to increased IL-17 secretion; the costimulatory activity requires SH2D1A (By similarity). Promotes recruitment of RORC to the IL-17 promoter (By similarity). In conjunction with SLAMF1 and CD84/SLAMF5 may be a negative regulator of the humoral immune response (PubMed:25926831). In the absence of SH2D1A/SAP can transmit negative signals to CD4(+) T-cells and NKT cells. Negatively regulates germinal center formation by inhibiting T-cell:B-cell adhesion; the function probably implicates increased association with PTPN6/SHP-1 via ITSMs in absence of SH2D1A/SAP (PubMed:22683125). However, reported to mediated T-cell adhesion, to participate in stable T-cell:B-cell interactions and to be involved in maintaining B-cell tolerance in germinal centers and in preventing autoimmunity (PubMed:20153220, PubMed:25801429). Involved in regulation of autoimmunity. Isoform 3 may be suppressor of pathogenic T-cell proliferation (PubMed:21422172).[UniProtKB/Swiss-Prot Function]</p> |

Product images:



Circular map for MG224443