

Product datasheet for **MG224410**

Asph (NM_133723) Mouse Tagged ORF Clone

Product data:

Product Type: Expression Plasmids
Product Name: Asph (NM_133723) Mouse Tagged ORF Clone
Tag: TurboGFP
Symbol: Asph
Synonyms: 2310005F16Rik; 3110001L23Rik; AI848629; AW261690; AW561901; BAH; C79816; cl-37
Mammalian Cell Selection: Neomycin
Vector: pCMV6-AC-GFP (PS100010)
E. coli Selection: Ampicillin (100 ug/mL)
ORF Nucleotide Sequence: >MG224410 representing NM_133723
 Red=Cloning site Blue=ORF Green=Tags(s)

TTTTGTAATACGACTCACTATAGGGCGGCCGGAATTCGTCGACTGGATCCGGTACCGAGGAGATCTGCC
 GCC**CGATCGCC**

ATGGCTGAAGATAAAGAGGCAAAGCACGGAGGACACAAGAATGGGAGAAGAGGAGGGATTCAGGAGGGT
 CCTTTTTACATGGTTCATGGTCATTGCATTGCTCGGCGTCTGGACATCTGTGGCTGTGCGTGTGGTTGA
 CTTGGTCGATTATGAAGAAGTTCTAGGAAAAGCTAGGAGTCTATGATGCGGATGGCGATGGAGACTTTGAT
 GTGGATGATGCCAAAGTTTTATTAGAAGGACCTGGTGGGTTAGCCAAGAGGAAAAGCTAAGGCTAAAGCTA
 AAGAACCATCAAGAAGAGCTGAAGAAGGAGAGAGGGAAAGCTGTGCCTAGCAAGAATGAAGAGCGAAG
 GCAGGGGAAGAAGGAGCAGGAGGATAGAGGGAAGGGAGGAAGAAGCCTGACTCAGACACATCCAGAAA
 GCATCCGCTGCAGGGAAGAGAGACAGAGACAAGGAAAGCCAGCTCTGACAAGATTCCAAGTCTAAGG
 AAAGCTGGAAGAAGGCCGTAGAGACAAAGGCTGTTTCTAGTAAAGTGGCTGCCAGAGACAAAGACAGGCC
 AGGAAGAAGCTCCTCTGGCATGCTCACGTCGCCAAGGAAAATGGCCAGAAGAGAAAAGAAC

ACGCGTACGCGGCCGCTCGAG - GFP Tag - GTTTAA

Protein Sequence: >MG224410 representing NM_133723
 Red=Cloning site Green=Tags(s)

MAEDKEAKHGGHKNRRGGISGGSFFTWFMVIALLVVWTSVAVVWFDLVDYEEVLGKLGVDADGDGDFD
 VDDAKVLLLEPGGLAKRRTKAKAKEPIKEELKKERGKAVPSKNEERRQGKKEQEDRGKGRKKPDSQK
 ASAAGKRDRDKEKASSDKSSKSKESWKKAVETKAVSSKVAARDKRRGRSSSGHAHVAKENGQKRKN

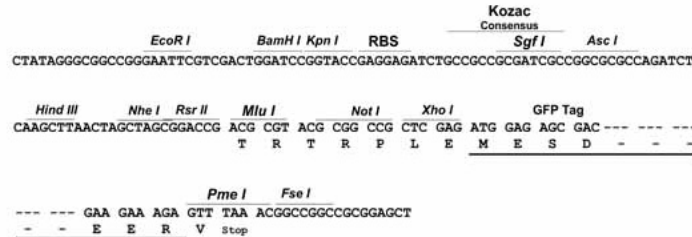
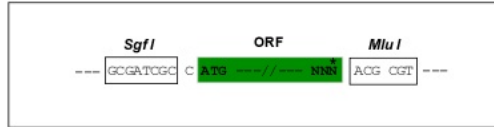
TRTRPLE - GFP Tag - V

Restriction Sites: SgfI-MluI

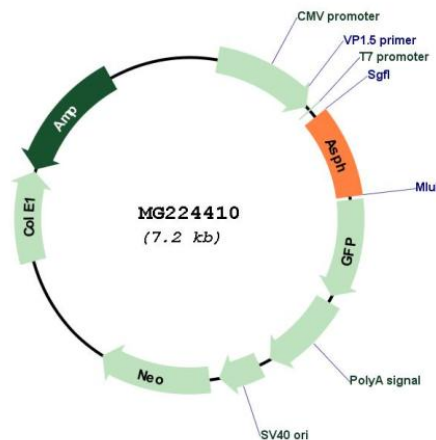


Cloning Scheme:

Cloning sites used for ORF Shutting:



Plasmid Map:



ACCN: NM_133723

ORF Size: 621 bp

OTI Disclaimer: The molecular sequence of this clone aligns with the gene accession number as a point of reference only. However, individual transcript sequences of the same gene can differ through naturally occurring variations (e.g. polymorphisms), each with its own valid existence. This clone is substantially in agreement with the reference, but a complete review of all prevailing variants is recommended prior to use. [More info](#)

OTI Annotation: This clone was engineered to express the complete ORF with an expression tag. Expression varies depending on the nature of the gene.

Components: The ORF clone is ion-exchange column purified and shipped in a 2D barcoded Matrix tube containing 10ug of transfection-ready, dried plasmid DNA (reconstitute with 100 ul of water).

Reconstitution Method:

1. Centrifuge at 5,000xg for 5min.
2. Carefully open the tube and add 100ul of sterile water to dissolve the DNA.
3. Close the tube and incubate for 10 minutes at room temperature.
4. Briefly vortex the tube and then do a quick spin (less than 5000xg) to concentrate the liquid at the bottom.
5. Store the suspended plasmid at -20°C. The DNA is stable for at least one year from date of shipping when stored at -20°C.

RefSeq: [NM_133723.2](#), [NP_598484.2](#)

RefSeq Size: 1761 bp

RefSeq ORF: 624 bp

Locus ID: 65973

Cytogenetics: 4 A1

Gene Summary: Isoform 1: specifically hydroxylates an Asp or Asn residue in certain epidermal growth factor-like (EGF) domains of a number of proteins.[UniProtKB/Swiss-Prot Function]