

Product datasheet for **MG224397**

Islr2 (NM_001161536) Mouse Tagged ORF Clone

Product data:

Product Type:	Expression Plasmids
Product Name:	Islr2 (NM_001161536) Mouse Tagged ORF Clone
Tag:	TurboGFP
Symbol:	Islr2
Synonyms:	B930052A04Rik; Linx; Mbu-3; mKIAA1465
Mammalian Cell Selection:	Neomycin
Vector:	pCMV6-AC-GFP (PS100010)
E. coli Selection:	Ampicillin (100 ug/mL)



[View online »](#)

ORF Nucleotide Sequence:

>MG224397 representing NM_001161536
 Red=Cloning site Blue=ORF Green=Tags(s)

TTTTGTAATACGACTCACTATAGGGCGGCCGGAATTCGTCGACTGGATCCGGTACCGAGGAGATCTGCC
 GCC**CGCATCGCC**

ATGGGGCCCTTTGGAGCCCTGTGTTTGGCCTGGGCTTTGCTAGGAGTGGTCAGAGCGTGTCCCGAGCCTT
 GCGCCTGTGTTGACAAGTACGCCACCAGTTTGCAGACTGTGCCTACAAGGAGCTGCGCGAGGTCCCAGA
 AGGACTGCCAGCCAACGTGACCACGCTTAGTCTGTCTGCCAACAAAGATTACGGTACTAAGCGGGGGGCC
 TTCGTCACAGTACGCAGGTCACTTCGCTGTGGCTGGCTCACAGTGAGGTACGCACGGTAGAGTCAGGGG
 CATTGGCAGTGTGAGTCAGCTCAAGAACCTCGACCTAAGCCACAACCTTATATCCAACCTCCCTTGGAG
 CGACCTTCGTAACCTTGGCGCGCTGCAGCTGTGAAAATGAACCACAACCGTCTGGGATCGCTGCCCGG
 GATGCACTCGGCGCGCTCCGGACCTGCCTCTCTGCGCATCAACAACAACCGGCTGCGTACCCTGGAGC
 CCGGCACGTTTCGACGCACTAAGCGCGCTGTCTCACCTGCAACTCTATCACAACCCCTTCCACTGCAGCTG
 TGGTCTCGTGTGGCTGCAGGCCCTGGGCAGCGAGCACCCGGGTCTCCTTACCGGAGCCGATTCTATAGCG
 TCGCCTCGCCCCCTGAGCTGCAGGGCGTGCCCGTGCACCGCCTGCCCGCCTGCCCTGCGCACCCCCCA
 GCGTGCCTGAGCGCAGAGCCCGCCCTGAGGCACCTGGCACCCCTCTGCGCGCAGGCTTGGCTTTCAT
 GTTACATTGCGTCGCCGAAGGCCACCCACACCCCGCCTGCAATGGCAACTTCAGATCCCGGGTGGCACT
 GTAGTCTTAGTGCCACCGGTTCTCAGCAAGGAAGAAGTGGAGGAGATAAGGTGGAGGATGGAGAGGGTG
 ACGGAGATGAGGACCTGCCTACGCAGACTGAAGCGCCAACCCCAACTCCAGCACCTGCTTGGCCAGCGCC
 TCCAGCCACCCCGCGCTTCTTGGCCCTCGCAAATGGCTCTCTGTTGGTGCCCTTCTGAGTGCCAAGGAG
 GCAGGCATCTACACTTGTCTGTCACACAATGAGCTGGGCACCAACTCAACGTCTTACGGGTGACGGTGA
 CTGCAGCGGGGCGCCAAAACACGCTCCTGGAACAGGGGAAGAACCTGATGCGCAGTCCCGACCTTGA
 GCGCAAGGCCACCACTAAGGGCCGTAGCAACAGGGTCTGCCCTTCAAGCCTGAAGGCAAAACCAAGGC
 CAAGGTCTTGCCGAGTCAGCGTCTTGGGAAAATCGAGGCAGAGCTGGAGGAGACAGATGAAGGAGAGC
 AGATGGAAGGTCAGATCCCTGCAGATCCGATGGGAGAGAAGCACTGTGGCCATGGGGACCCCTCTCGCTA
 TGTGTCTAACCATGCATTCAACCAGAGCTCAGATCTCAAGCCGCACGTTTTTGGATTGGCGTTCATCGCG
 CTGGATGTAGCAGAGCGTGAGGCTCGGGTGCAGCTGACGCCTTGTGTCGCGCTGGGGCCCTGGGCCAG
 ATGGTGTAGCGGAGCGCGGGCGGGGAGGCGGCCACTGCGCCTACTCTATCTGTGTCCTGCGGGGGG
 TGGCACGGCAGTTCAGTGGTCACGAGTGAAGAGGGGGTCAATGCCTACTGGTTTCGCGGCTGCGGCT
 GGCACCAACTACTCCGTATGCTGGCACTGGCGGGCGAGGCGTGTACAGTGCAGGTGGTGTCTTCTACCA
 AGAAAGAACTGCCGTCCCTGCTGTTATCGTGACCGTGAGTGTCTTCTCCTGGTGTGGCCACCGTGCC
 CCTGCTGGGTGCCGCTGCTGCCATCTGCTGGCCAAACATCCGGGCAAACCTACCGTTTAACTCTGAGG
 CCACAGGCCCCGGACCCTATGGAGAAACGCATCGCGGCCGATTTTCGATCCGCGTGCTTCTACCTTGTGAGT
 CTGAGAAAAGCTACCTGCTCGTGGCGAGGCGGGAGGTGAGGAGCCAGAGGAGGTCCCGGAGGAAGGCT
 GGATGAAGATGTGGAGCAGGGGGACCAAGCGGGACCTTTCAGAGAGAGGAAAGCCTGGCGGGTTGCTCA
 TTGGTGGAGTCTCAGTCCAAGGCCAACCAAGAGGAGTTCGAGGCTGGCTCGGAGTACAGCGATCGGCTGC
 CCCTGGGAGCGGAAGCAGTCAACATCGCCAGGAAATAAACGGCAACTACAGGCAGACAGCGGGC

ACGCGTACGCGGCCGCTCGAG - GFP Tag - GTTTAA

Protein Sequence: >MG224397 representing NM_001161536
 Red=Cloning site Green=Tags(s)

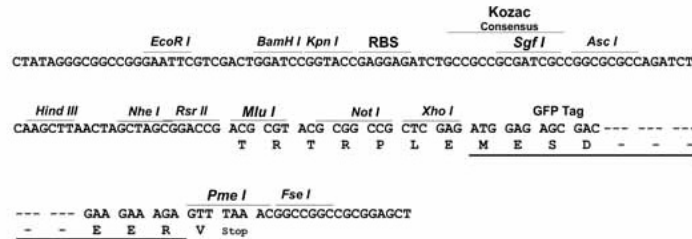
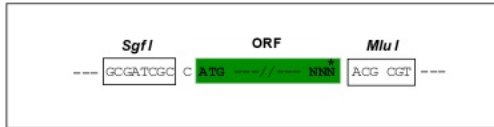
MGPFGALCLAWALLGVVRACPEPCACVDKYAHQFADCAKELREVPEGLPANVTTLSSLANKITVLRGA
 FVNVTQVTSWLVAHSEVRTVESGALAVLSQLKNLDLSHNLSNFPWSDLRNL SALQLLKMNNHRLGSLPR
 DALGALPDLRSLRINNRLRRTLEPGTFDAL SALSHLQLYHNPFFHCSCGLVWLQAWAASTRVSLPEPDSIA
 CASPPQLQGVVHRLPALPCAPPSVRLSAEPPPEAPGTPLRAGLAFMLHCVAEGHPTPRLQWLQIPGGT
 VVLVPPVLSKEEDGGDKVEDGEGDDELPTQTEAPTPTPAPAWPAPPATPRFLALANGSLLVPLL SAKE
 AGIYTCRAHNELGTNSTSLRVTVAAGPPKHAPGTGEEPDAQVPTSERKATTKGRSNSVLPFKPEGKTKG
 QGLARVSVLGEIEAELEETDEGEQMEGQIPADPMGEKHCGHGDPSTRYSNHFQSSDLKPHVFELGVIA
 LDVAEREARVQLTPLAARWGPDPGASGARRPGRRLRLLYLCPAGGGTAVQWSRVEEGVNAVWFRGLRP
 GTNYSVCLALAGEACHVQVVFSTKKELPSLLVIVTVSVFLLVLATVPLLGAACCHLLAKHPGKPYRLILR
 PQAPDPMEKRIAADFDPRASYLESEKSYPARGEAGGEEPEEVPEEGLDEDVEQGDPSGDLQREESLAGCS
 LVESQSKANQEEFEAGSEYSDRLPLGAEAVNIAQEINGNYRQTAG

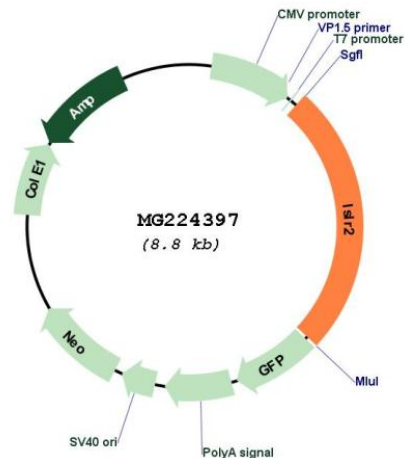
TRTRPLE - GFP Tag - V

Restriction Sites: SgfI-MluI

Cloning Scheme:

Cloning sites used for ORF Shutting:



Plasmid Map:


ACCN: NM_001161536

ORF Size: 2235 bp

OTI Disclaimer: The molecular sequence of this clone aligns with the gene accession number as a point of reference only. However, individual transcript sequences of the same gene can differ through naturally occurring variations (e.g. polymorphisms), each with its own valid existence. This clone is substantially in agreement with the reference, but a complete review of all prevailing variants is recommended prior to use. [More info](#)

OTI Annotation: This clone was engineered to express the complete ORF with an expression tag. Expression varies depending on the nature of the gene.

Components: The ORF clone is ion-exchange column purified and shipped in a 2D barcoded Matrix tube containing 10ug of transfection-ready, dried plasmid DNA (reconstitute with 100 ul of water).

Reconstitution Method:

1. Centrifuge at 5,000xg for 5min.
2. Carefully open the tube and add 100ul of sterile water to dissolve the DNA.
3. Close the tube and incubate for 10 minutes at room temperature.
4. Briefly vortex the tube and then do a quick spin (less than 5000xg) to concentrate the liquid at the bottom.
5. Store the suspended plasmid at -20°C. The DNA is stable for at least one year from date of shipping when stored at -20°C.

RefSeq: [NM_001161536.1](#), [NP_001155008.1](#)

RefSeq Size: 4319 bp

RefSeq ORF: 2238 bp

Locus ID: 320563

UniProt ID: [Q5RKR3](#)

Cytogenetics: 9 B

Gene Summary: Required for axon extension during neural development.[UniProtKB/Swiss-Prot Function]