

## Product datasheet for **MG224366**

### Ildr2 (NM\_001164528) Mouse Tagged ORF Clone

#### Product data:

Product Type:	Expression Plasmids
Product Name:	Ildr2 (NM_001164528) Mouse Tagged ORF Clone
Tag:	TurboGFP
Symbol:	Ildr2
Synonyms:	2810478N18Rik; 3110063L10Rik; AI852300; D1Ertd471e; Dbsm1; ENSMUSG00000040612; LI
Mammalian Cell Selection:	Neomycin
Vector:	pCMV6-AC-GFP (PS100010)
E. coli Selection:	Ampicillin (100 ug/mL)



[View online »](#)

**ORF Nucleotide Sequence:**

>MG224366 representing NM\_001164528  
 Red=Cloning site Blue=ORF Green=Tags(s)

TTTTGTAATACGACTCACTATAGGGCGGCCGGAATTCGTCGACTGGATCCGGTACCGAGGAGATCTGCC  
 GCC**CGATCGCC**

ATGCCCGCTTTTCCCACTCTGGATCTGGATGGGAAGTTGGGAAGATGGATAGGGTCGTGTTGGGTGGA  
 CCGCTGTCTTCTGGTTAACAGCCATGGTTGAAGGCCTTCAGGTCACAGTGCCTGACAAGAAGAAGGTGGC  
 CATGCTCTTCCAGCCCACTGTGCTTCGATGCCACTTTTCCACGTCTCCATCAGCCTGCGGTGGTTCAG  
 TGAAGTTCAAATCCTACTGCCAGGATCGCATGGGAGAATCCTTGGGCATGTCTTCTCCCGAGCCCAAG  
 CGCTCAGCAAGAGGAACCTGGAATGGGACCCCTACTTGGATTGTTTAGACAGCAGAAGGACCGTCCGAGT  
 GGTAGCTTCCAAACAGGGCTCGACGTTACCCTGGGAGATTTCTACAGGGCAGAGAGATCACAATAGTT  
 CACGATGCAGATCTTCAAATTGAAAGCTCATGTGGGGAGACAGCGGACTCTACTACTGTATCATCACCA  
 CCCCAGGATGACCTGGAAGGCAAAAACGAAGACTCAGTGGAACTGCTGGTGTGGGACAGGAGGGCTGCT  
 TGCTGATCTCTTCCCAGTTTTGCTGTGGAGATTATGCCAGAGTGGGTGTTTGTCCGCTGGTGATCCTG  
 GGGATTTTCTCTTCTTGTGCTGGTGGGATCTGCTGGTGCCAATGCTGCCCTCACAGTTGCTGCTGCT  
 ATGTCCGCTGCCATGCTGCCAGATTCCTGCTGCTGCCCTCAGGCCCTGTATGAAGCAGGAAAGCAGC  
 CAAGGCCGGGTACCCTCCCTCTGTCTCCGGTGTCCCCGGCCCCTACTCCATCCCCTCTGTCCCTTTGGGA  
 GGAGCCCCCTTCTGGCATGCTGATGGACAAGCCGCATCCACCTCCCCTGGCACCAAGTGATCCACTG  
 GAGGAAGCCACAGTGTTCGCAAAGGTTACCGGATCCAGGCTGACAAGAGAGAGACTCCATGAAGTCTCT  
 GTACTATGTCGAGAAGGAGCTGGCTCAGTTTGATCCAGCCAGGAGGATGAGAGGCAGATAAACAACACC  
 ATCTCGAACTCAGCTCCCTGCATGATGATGACAGCAATTTCCGCCAGTCTTACCACCAGATGCGGAATA  
 AGCAGTTCCTATGTCTGGAGACCTGGAAGCAATCCTGACTACTGGTCAGGTGTCATGGGAGGCAACAG  
 TGGGACCAACAGGGGCCAGCCTTGGAGTATAACAAGAGGACCGTGAGAGCTTCAGGCACAGCCAGCAG  
 CGCTCAAATCTGAGATGCTGTGCGGAAGAATTTGCCACGGCGTGCCGGCCGTGTCGATGGACGAGC  
 TGGCAGCCTTCGACAGCTCGTACGGCCAGCGGTGCGGGCGCCAATGGCAACAGCCACGAGGCGCGGGC  
 GGGGAGCCGCTTCGAGCGCTCGGAGTCCGCGGCCACGGTGCCTTCTACCAGGACGGCTCGCTGGATGAG  
 TACTACGGGCGCGGACGCAGTCCGCGAGCCCGGGAGACGGGAGCGTGGCTGGACCTACAGCCCCGCAC  
 CCGCACGCCGCCGCGCCAGAGGATGCGCCTCTGCCGCGCTGGTGAGCCGACCCGGGACCCGCGCC  
 CAAGTACGATCACTCGTACCTGAGCAGCGTGTGGAGCGCCAGGCGGGCCGAGAGCAGCAGCCGCGGG  
 GGCAGCCTGGAGACGCCGTCCAAGCTGGGCGCGCAGCTGGGCCCGCGCAGCGCATCTACTACGCCTGGT  
 CGCCGCCAACACATACAAAGCTGGGGCCAGCGAGGGCGAAGACGAGGACGACGCGCGGATGAGGACGC  
 GCTGCCACCTACAGCGAGCTGGAGCTGAGCCGCGGAGAGCTGAGCCGGGGCCCTCCTACCGTGGGCGT  
 GACCTGTCTTCCACAGCAACTCGGAGAAGAGGAGGAAAAAGGAGCCCGCAAGAAACCCGGCGACTTTC  
 CAACCAGGATGTCCCTTGTAGTC

**ACGCGT**ACGCGGCCGCTCGAG - GFP Tag - GTTTAA

Protein Sequence: >MG224366 representing NM\_001164528  
 Red=Cloning site Green=Tags(s)

MPAFPTLDDLKGLGKMDRVVLGWTAVFWLTAMVEGLQVTVPDKKKVAMLFQPTVLRCHFSTSSHQPAVVQ  
 WKFKSYCQDRMGESLGMSSPRAQALSKRNLEWDPYLDCLDSRRTVRVASKQGSTVTLGDFYRGREITIV  
 HDADLQIGKLMWGD SGLYYCIIITPDDLEGNEDSVELLVLRGRTGLLADLLPSFAVEIMPEWVFLVIL  
 GIFLFFVLVIGICWCQCCPHSCCCYVRCPCPDSCCCPQALYEAGKAAKAGYPPSVSGVPGPYISVPLG  
 GAPSSGMLMDKPHPPPLAPSDSTGGSHSVRKGYRIQADKERDSMKVLYYVEKELAQFDPARRMRGRYNN  
 ISELSSLHDDSNFRQSYHQMRNKQFPMSGDLESNPDYWSGVMGGNSGTNRGPALEYNKEDRESFRHSQQ  
 RSKSEMLSRKNFATGVPAYSMDELAFAFADSYGQRSRRANGNSHEARAGSRFERSESRAHGAFYQDGLSDE  
 YYGRGRSREPPGDGERGWTYSPAPARRRPPEDAPL PRLVSRTPGTAPKYDHSYLSVLERQARPESSSRG  
 GSLETPSKLG AQLGPRSASYYAWSPPTTYKAGASEGEDEDDA ADEDALPPYSELELSRGELSRGSPSYRGR  
 DLSFHNSSEKRRKKEPAKKPGDFPTRMSLVV

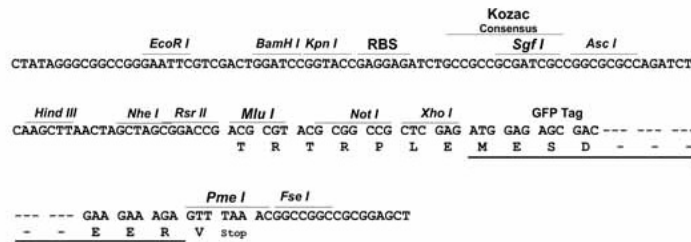
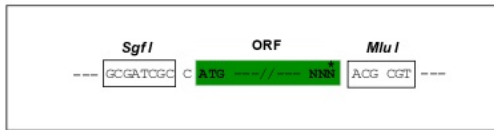
TRTRPLE - GFP Tag - V

Chromatograms: [https://cdn.origene.com/chromatograms/ja1847\\_g07.zip](https://cdn.origene.com/chromatograms/ja1847_g07.zip)

Restriction Sites: Sgfl-MluI

Cloning Scheme:

Cloning sites used for ORF Shuttling:



ACCN: NM\_001164528

ORF Size: 1983 bp

**OTI Disclaimer:** Due to the inherent nature of this plasmid, standard methods to replicate additional amounts of DNA in E. coli are highly likely to result in mutations and/or rearrangements. Therefore, OriGene does not guarantee the capability to replicate this plasmid DNA. Additional amounts of DNA can be purchased from OriGene with batch-specific, full-sequence verification at a reduced cost. Please contact our customer care team at [custsupport@origene.com](mailto:custsupport@origene.com) or by calling 301.340.3188 option 3 for pricing and delivery.

The molecular sequence of this clone aligns with the gene accession number as a point of reference only. However, individual transcript sequences of the same gene can differ through naturally occurring variations (e.g. polymorphisms), each with its own valid existence. This clone is substantially in agreement with the reference, but a complete review of all prevailing variants is recommended prior to use. [More info](#)

**OTI Annotation:** This clone was engineered to express the complete ORF with an expression tag. Expression varies depending on the nature of the gene.

**Components:** The ORF clone is ion-exchange column purified and shipped in a 2D barcoded Matrix tube containing 10ug of transfection-ready, dried plasmid DNA (reconstitute with 100 ul of water).

**Reconstitution Method:**

1. Centrifuge at 5,000xg for 5min.
2. Carefully open the tube and add 100ul of sterile water to dissolve the DNA.
3. Close the tube and incubate for 10 minutes at room temperature.
4. Briefly vortex the tube and then do a quick spin (less than 5000xg) to concentrate the liquid at the bottom.
5. Store the suspended plasmid at -20°C. The DNA is stable for at least one year from date of shipping when stored at -20°C.

**RefSeq:** [NM\\_001164528.1](#), [NP\\_001158000.1](#)

**RefSeq Size:** 8260 bp

**RefSeq ORF:** 1986 bp

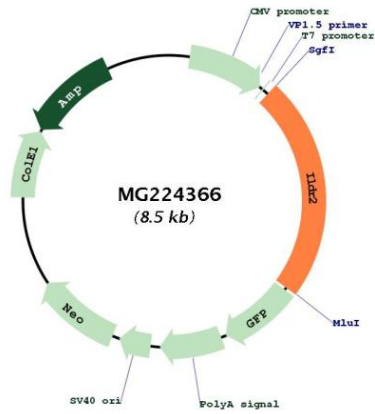
**Locus ID:** 100039795

**UniProt ID:** [B5TVM2](#)

**Cytogenetics:** 1 73.61 cM

**Gene Summary:** May be involved in lipid homeostasis and ER stress pathways.[UniProtKB/Swiss-Prot Function]

Product images:



Circular map for MG224366