

Product datasheet for **MG224361**

Ptch2 (NM_008958) Mouse Tagged ORF Clone

Product data:

Product Type:	Expression Plasmids
Product Name:	Ptch2 (NM_008958) Mouse Tagged ORF Clone
Tag:	TurboGFP
Symbol:	Ptch2
Synonyms:	ptc; ptc2
Mammalian Cell Selection:	Neomycin
Vector:	pCMV6-AC-GFP (PS100010)
E. coli Selection:	Ampicillin (100 ug/mL)
ORF Nucleotide Sequence:	>MG224361 representing NM_008958 Red=Cloning site Blue=ORF Green=Tags(s)

TTTTGTAATACGACTCACTATAGGGCGGCCGGAATTCGTCGACTGGATCCGGTACCGAGGAGATCTGCC
GCC**CGATCGCC**

ATGGTTCGGCCACTGTCCCTTGGAGAGCTACCTCCCAGCTACACACCTCCAGCTCGGTCTCCGCACCTC
ATATCCTAGCTGGGAGCCTGCAGGCTCCTCTGGCTTCGAGCTTACTTCCAAGGTCTACTTCTCCCT
GGGGTGCAGGATCCAGAAACACTGCGGCAAGTCTCTTCTGGGACTGGTGGCCTTTGGGGCTCTGGCA
CTGGGTCTCCGAGTGGCTGTAATTGAGACAGACCTAGAACAGCTCTGGTAGAAGTGGGCAGCAGGGTGA
GCCAGGAGCTGCACTACACCAAGGAGAAGCTGGGGGAAGAGGCTGCGTACACCTCCAGATGTTGATTCA
GACTGCGCACCAGGAAGGGGAAACGTCTCACCCCGAGGCACTTGACTTGCACCTCCAGCGCGGCTC
ACTGCCAGTAAAGTCAAAGTATCACTCTATGGGAAATCCTGGGATTTGAACAAGATCTGCTACAAATCAG
GGGTTCCCTTATTGAAAATGGGATGATCGAGCGGATGATTGAGAAGCTGTTTCCCTGTGTGATCCTCAC
CCCCTTGACTGCTTCTGGGAAGGAGCCAACTCCAAGGGGGCTCTGCCTACTTGGCGGGCCGCCCTGAT
ATCCAGTGGACCAACCTGGACCTCAGCAGCTGCTCGAGGAGCTGGGCCCTTTGCCTCTCTGGAGGGCT
TCCGGAACTGCTAGATAAGGCACAGGTGGGCCAGGCCTATGTGGGGCGACCCTGTCTGGACCCTGATGA
CCCCACTGTCCACCTAGTGTCTCCAACCGGCACAGCAGGCAGGCTCCCAATGTGGCTCAGGAGCTGAGT
GGGGTGCATGGCTTCTCCACAAGTTCATGCACTGGCAGGAGGAAGTCTACTAGGGGGCACAGCCA
GAGATCTCCAAGGACAGCTGCTGAGGGCAGAGGCCTTGACAGACACCTTCCCTGCTCATGAGTCCCGTCA
GCTGTACGAGCACTTCCGGGGCGACTACCAGACACATGACATCGCTGGAGCGAGGAGCAGGCCAGCATG
GTGCTGCAGGCCTGGCAGAGGCGCTTTGTGACGCTAGCCAGGAGGCTCTGCCGGCAACCGTCCCAGC
AGATCCATGCCTTCTCCTCCACCACCCTGGATGACATCCTGCGCGGTTCTCTGAAGTCAGCACCACCCG
TGTGGTAGGAGGCTATCTGCTTATGCTGGCCTATGCCTGCGTAACAATGCTGCGGTGGGACTGCGCCAG
TCCCAGGTGCCGTAGGTCTTGTGGGGTGTGCTGGTGGCCCTGGCGGTGGCCTCAGGTCTTGGGCTTT
GTGCCCTACTTGGCATCACTTTCAATGCTGCCACTACACAGGTGCTGCCCTTCTTGGCTCTGGGCATTGG
CGTGGATGACATCTTCTGCTGGCGCATGCCTTCAAAAAGCCACCTGACACCCCTCTCCAGAGCGT



ATGGGTGAGTGTTTGAGGAGCACGGGCACCAGCGTGGCACTCACATCCGTCAACAACATGGTCGCCTTTT
TCATGGCTGCCCTGGTTCCCATTCCTGCGCTGCGGGCCTTCTCCCTGCAGGCAGCCATAGTGGTCGGCTG
CAACTTTGACGCGGTAATGCTCGTCTTCCCTGCCATCCTCAGCCTCGACCTGCGCCGGCGCCACCGCCAA
CGCCTGGACGTTCTCTGTGCTTTTCTAGCCCCGCTCCGCTCAGGTCATTAGATGCTGCCCCAGGAGC
TAGGGGACAGAGCAGTACCAGTGGGCATTGCCACCTGACTGCCACCGTGAAGCCTTACCACCTGCGA
AGCCAGCAGCCAGCATGTAGTCACCAATTTGCCTCCTCAAGCCCACCTGCTGTCTCCAGCTTCTGACCCA
CTGGGCTCCGAACCTATAGCCCTGGAGGGTCTACACGGGACCTTCTCAGTCAGGAGGAGGGACAGGGC
CACAGGGCGCCTGCAGGGCCCTGCTCTGTGCCACTGGACTCTCGCCATTTTGCCCGCTATCAGTTTGC
ACCTTTACTGCTCCAGACACGAGCCAAGGCCCTGGTGTGCTGTTCTTTGGGGCTCTTTGGGCCTGAGC
CTCTATGGAGCCACCTTGGTACAAGATGGGCTGGCCCTGACAGATGTGGTCCCTAGGGGCACCAAGGAAC
ATGCTTTCCTGAGCGCCAGCTCAGGTAATCTCCCTGTACGAGGTGGCTCTAGTGACACAGGGTGGCTT
TGACTACGCCACTCCCAACGCGCCCTTTGATCTGCACCAGCGCTTACGCTCCCTCAAGGCTGTGCTG
CCCCACCTGCCACCCAGGCACCCCGCACCTGGCTTCACTACTACCGAGCTGGTACAGGGTATCCAGG
CTGCATTTGACCAAGACTGGGCTTCTGGGCGCATCACCTGCCACTTACCGCAACGGCTCAGAAGATGG
CGCCCTGGCCTACAAGCTGCTCATCAAACCGGAATGCCAGGAGCCTCTGGATTTAGCCAGCTGACC
ACAAGGAAACTGGTGGACAAGGAGGGACTATTCCCCAGAGCTTCTACATGGGGTAACCGTGTGGG
TGAGCAGCGACCCCTGGGCCTCGCAGCCTCTCAGGCCAATTCTACCCCCACCTCCAGAGTGGCTTCA
CGACAAATATGATACCACCGGGGAGAACCTTCGCATCCCGGCAGCCAGCCCTTGGAGTTTGCCAGTTC
CCCTTCTGCTGCATGGACTCCAGAAGACTGCAGACTTTGTAGAAGCCATCGAAGGGGCCAGGGCGGCAT
GCACAGAGGCAGGCCAGGCAGGGGTGCATGCCTACCCAGTGGCTCCCCCTTCTCTTCTGGGAGCAGTA
TCTGGGCTTTCGGCGCTGCTTCTGCTGGCAGTCTGCATCTTGTGGTGTGCACCTTCTCGTCTGTGCC
CTGCTTCTACTCAGCCCCTGGACAGCTGGCCTCATAGTGTGGTCTGGCAATGATGACTGTGGAGCTCT
TTGGTATCATGGGATTCCTGGGCATCAAACCTGAGTGCCATCCCCGTGGTAATCCTCGTGGCCTCATAGG
CATTGGTGTGAATTCACAGTTCACGTGGCTCTGGGCTTCTGACCAGCCATGGTAGCCGGAACCTGCGG
GCTGCTAGCGCTCTGGAACAGACCTTTGCCCTGTGACTGATGGAGCTGTCTCCACCTTGTGGGCTGCTG
TCATGCTTGTGGTTCTAACTTTGACTTTCATCATAAGGTATTTCTTTGTGGTGTGACGGTGTGACACT
CTTGGGCTGCTCCATGGACTCCTGCTGCTGCCTGTGCTGCTCTATCCTAGGCCCCCCGCCACAGGTG
GTGCAGGTATACAAGGAGAGTCCACAGACCCTAAACTCCGCTGCTCCACAGAGAGGTGGGCTCAGGTGGG
ACAGGCCCCCCACCTGCCCCAGAGTTTGGCAGAGTACTACCTCCATGACTGTGGCCCTCCACCCACC
ACCTCTGCCTGGAGCATACGTCCACCCAGCCTCCGAGGAGCCACA

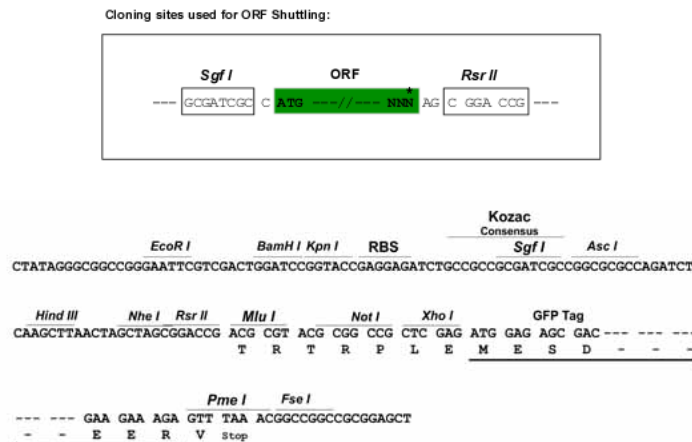
AGCGGACCGACGCGTACGCGGCCGCTCGAG - GFP Tag - GTTTAA

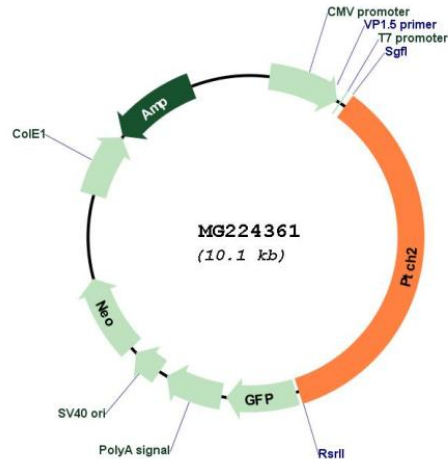
Protein Sequence: >MG224361 representing NM_008958
 Red=Cloning site Green=Tags(s)

MVRPLSLGELPPSYTPPARSSAPHILAGSLQAPLWLRAYFQGLLFSLGCRIQKHCGKVLFLGLVAFGALA
 LGLRVAVIETDLEQLWVEVGSRSVSELHYTKEKLGEEAAYTSQMLIQTAHQEGGNVLTPEALDLHLQAAL
 TASKVQVSLYKSWDLNKICYKSGVPLIENGMIERMIEKLFPCVILTPLDCFWEAKLQGG SAYLPGRPD
 IQWTNLDPQQLLEELGPFASLEGFRELLDKAQVQAYVGRPCLDPDDPHCPPSAPNRHSRQAPNVAQELS
 GGCHGF SHKFMHWQEELLLGGTARDLQGQLLRAEALQSTFLLMSRQLYEHFRGDYQTHDIGWSEEQASM
 VLQAWQRRFVQLAQEALPANASQIHAFSSTTLDILRAFSEVSTTRVVGYYLLMLAYACVTMLRWDCAQ
 SQGAVGLAGVLLVALAVASGLGLCALLGITFNAATTQVLPFLALGIGVDDIFLLAHAFTKAPDTPPER
 MGECLRSTGTSVALTSVNNMVAFFMAALVIPALRAFSLQAAIVVGCNFAAVMLVFPAILSLDLRRRHRQ
 RLDVLCFFSSPCSAQVIQMLPQELGDRAPVGI AHLTATVQAFTHCEASSQHVVITLPPQAHLSPASDP
 LGSEL YSPGGSTRDLLSQEEGTGPQAACRPLLCAHWTLAHFARYQFAPLLLQTRAKALLFFGALLGLS
 LYGATLVQDGLALTDVVRGTKEHAFLSAQLRYFSLYEVALVTQGGFDYAHSQRALFDLHQRFSSSLKAVL
 PPPATQAPRTWLHYYRSWLQGIQAAFDQDWASGRITCHSYRNGSEDGALAYKLLIQTGNAQEPLDFSQLT
 TRKLV DKEGLIPPELFYMGLTVWVSSDPLGLAASQANFYPPPPEWLHDKYDTTGENLRIPAAQPLEFAQF
 PFLLHGLQKTADFVEAIEGARAACTEAGQAGVHAYPSGSPFLFWEQYGLRRCFLLAVCILLVCTFLVCA
 LLLLSPWTAGLIVLVLAMMTVELFGIMGFLGIKLSAIPVVILVASIGIGVEFTVHVALGFLTSHGSRNLR
 AASALEQTFAPVTDGAVSTLLGLLMLAGSNFDFIIRYFFVVLTVLTLGLLHGLLLL PVLVLSILGPPPVQ
 VQVYKESPQTLNSAAPQRGGLRWRPPTLPQS FARVTTSMVALHPPPLPGAYVHPASEEPT

SGPTRRRLE - GFP Tag - V

Restriction Sites: SgfI-RsrII
 Cloning Scheme:



Plasmid Map:


ACCN: NM_008958

ORF Size: 3546 bp

OTI Disclaimer: The molecular sequence of this clone aligns with the gene accession number as a point of reference only. However, individual transcript sequences of the same gene can differ through naturally occurring variations (e.g. polymorphisms), each with its own valid existence. This clone is substantially in agreement with the reference, but a complete review of all prevailing variants is recommended prior to use. [More info](#)

OTI Annotation: This clone was engineered to express the complete ORF with an expression tag. Expression varies depending on the nature of the gene.

Components: The ORF clone is ion-exchange column purified and shipped in a 2D barcoded Matrix tube containing 10ug of transfection-ready, dried plasmid DNA (reconstitute with 100 ul of water).

Reconstitution Method:

1. Centrifuge at 5,000xg for 5min.
2. Carefully open the tube and add 100ul of sterile water to dissolve the DNA.
3. Close the tube and incubate for 10 minutes at room temperature.
4. Briefly vortex the tube and then do a quick spin (less than 5000xg) to concentrate the liquid at the bottom.
5. Store the suspended plasmid at -20°C. The DNA is stable for at least one year from date of shipping when stored at -20°C.

RefSeq: [NM_008958.3](#), [NP_032984.1](#)

RefSeq Size: 3549 bp

RefSeq ORF: 3549 bp

Locus ID: 19207

UniProt ID: [O35595](#)

Cytogenetics: 4 53.41 cM

Gene Summary:

This gene encodes a member of the patched family of transmembrane receptor proteins. The encoded protein may be a functional receptor for the morphogen sonic hedgehog (Shh) and is reportedly involved in limb and skin development. Homozygous mutant mice for this gene exhibit hair loss and epidermal hyperplasia. Alternative splicing results in multiple transcript variants. [provided by RefSeq, Aug 2015]