

Product datasheet for **MG224352**

Gpr26 (NM_173410) Mouse Tagged ORF Clone

Product data:

Product Type: Expression Plasmids
Product Name: Gpr26 (NM_173410) Mouse Tagged ORF Clone
Tag: TurboGFP
Symbol: Gpr26
Synonyms: 9630036A11Rik; A730021D22
Mammalian Cell Selection: Neomycin
Vector: pCMV6-AC-GFP (PS100010)
E. coli Selection: Ampicillin (100 ug/mL)
ORF Nucleotide Sequence: >MG224352 representing NM_173410
Red=Cloning site Blue=ORF Green=Tags(s)

TTTTGTAATACGACTCACTATAGGGCGGCCGGAATTCGTCGACTGGATCCGGTACCGAGGAGATCTGCC
 GCCCGATCGCC

ATGAACCTCGTGGGACGCGGGCTGGCGGGCTGCTGGTGGGCACTATCGGCGTGTGCTGCTGTCCAACG
 GGCTGGTGTGCTCTGCCTCCTGCACAGCGTGACATCCGCCGCCAGGCGCCGGCGCTTCTCACTCTCAA
 CCTCACGTGTGGCAACCTGCTGTGTACCGTGGTCAACATGCCACTAACTGGCCGGCGTGTGGCACA
 CGGCAGCCGGCCGGGACCGCTGTGCCGCTGGCCGCTTCTCGACACCTTTCTGGCCGCAACTCCA
 TGCTCAGCATGGCCGCGCTCAGCATCGACCGCTGGGTGGCTGTGGTCTTCCGCTGAGCTACCGTGCCAA
 GATGCGCCTCCGAGATGCCGCTTCATGGTGGCTACACGTGGCTGCACGCGCTCACCTCCCGGCCACC
 GCGCTCGCCCTGTCTGGCTCGGCTTCCACCAGCTATATGCCTCGTGCACACTGTGCAGCCGGCGCCGG
 ACGAGCGCTGCGCTTGTCTTCCACAGCGCTTCCATGCGCTCAGCTTCTGCTCTCCTTCATCGT
 GCTCTGCTTACGTACCTCAAGGTGCTCAAGGTGGCCCGCTTCCACTGCAAGCGCATCGACGTGATCACC
 ATGCAGACGCTTGTGCTGTTGGTGGACATACACCCAGTGTGAGGGAACGGTGTCTGGAGGAACAGAAGC
 GGAGGCGACAGCGTGCCACCAAGAAGATCAGCACCTTCATAGGGACCTCCTTGTGTGCTTTGCACCCTA
 TGTGATTACCAGGCTGGTGAACCTTCTCCACAGCACCCATTGGCTCTCACTGGGAGTGCTGTCCAAG
 TGCTTGGCCTACAGCAAGCCGCTTCTGACCCCTCGTGTATTCTTGGTGCACACCAATACCGCAGGA
 GCTGCAAGGAGCTCCTGAACAGGATCTTCAACAGACGCTCCCTCACTCTGTGGGCTCACAGGTGACTC
 TCACAGCCAGAATTCTGCCAGTGTGCGAA

ACGCGTACGCGGCCGCTCGAG - GFP Tag - GTTTAA



[View online »](#)

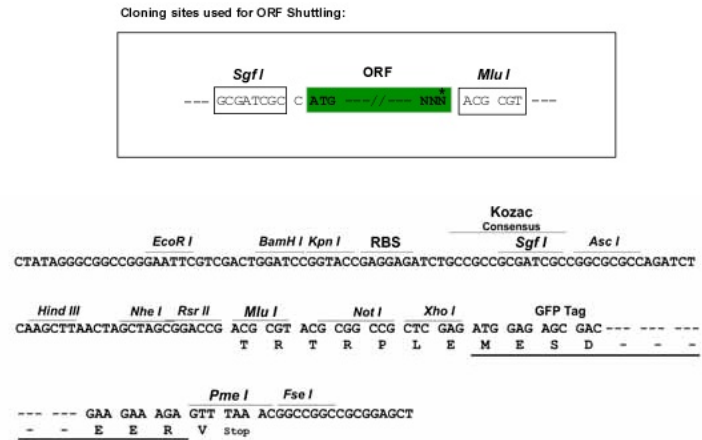
Protein Sequence: >MG224352 representing NM_173410
 Red=Cloning site Green=Tags(s)

MNSWDAGLAGLLVGTIGVSLLSNGLVLLCLLHSADIRRQAPALFTLNLTCGNLLCTVVNMPLTLAGVVAQ
 RQPAGDRLCRLAAFLDTFLAANSMLSMAALSIDRWVAVVFPLSYRAKMLRDAAFMVAYTWLHALTFPAT
 ALALSWLGFHQLYASCTLCSSRPDERLRFVFTSAFHALSFLLSFIVLCFTYLKVLKVARFHCKRIDVIT
 MQTLVLLVDIHPVSRERCLLEEQRRRQRATKKISTFIFGTFVLCFAPYVITRLVELFSTAPIGSHWGLSK
 CLAYSKAASDPFVYSLLRHQYRRSCKELLNIRIFNRRSLHSVGLTGDSHSQNILPVSE

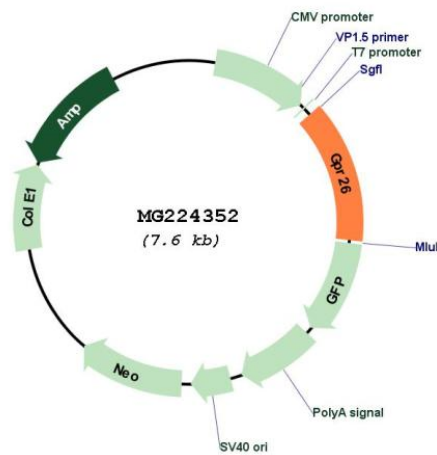
TRTRPLE - GFP Tag - V

Restriction Sites: SgfI-MluI

Cloning Scheme:



Plasmid Map:



ACCN: NM_173410

ORF Size: 1011 bp

OTI Disclaimer:	The molecular sequence of this clone aligns with the gene accession number as a point of reference only. However, individual transcript sequences of the same gene can differ through naturally occurring variations (e.g. polymorphisms), each with its own valid existence. This clone is substantially in agreement with the reference, but a complete review of all prevailing variants is recommended prior to use. More info
OTI Annotation:	This clone was engineered to express the complete ORF with an expression tag. Expression varies depending on the nature of the gene.
Components:	The ORF clone is ion-exchange column purified and shipped in a 2D barcoded Matrix tube containing 10ug of transfection-ready, dried plasmid DNA (reconstitute with 100 ul of water).
Reconstitution Method:	<ol style="list-style-type: none">1. Centrifuge at 5,000xg for 5min.2. Carefully open the tube and add 100ul of sterile water to dissolve the DNA.3. Close the tube and incubate for 10 minutes at room temperature.4. Briefly vortex the tube and then do a quick spin (less than 5000xg) to concentrate the liquid at the bottom.5. Store the suspended plasmid at -20°C. The DNA is stable for at least one year from date of shipping when stored at -20°C.
RefSeq:	NM_173410.3 , NP_775586.1
RefSeq Size:	2799 bp
RefSeq ORF:	1014 bp
Locus ID:	233919
UniProt ID:	Q8BZA7
Cytogenetics:	7 F3
Gene Summary:	Orphan receptor. Displays a significant level of constitutive activity. Its effect is mediated by G(s)-alpha protein that stimulate adenylate cyclase, resulting in an elevation of intracellular cAMP (By similarity).[UniProtKB/Swiss-Prot Function]