

Product datasheet for **MG224350**

Abcc9 (NM_021042) Mouse Tagged ORF Clone

Product data:

Product Type:	Expression Plasmids
Product Name:	Abcc9 (NM_021042) Mouse Tagged ORF Clone
Tag:	TurboGFP
Symbol:	Abcc9
Synonyms:	AI414027; AI449286; SU; SUR; Sur2; SUR2A; SUR2B
Mammalian Cell Selection:	Neomycin
Vector:	pCMV6-AC-GFP (PS100010)
E. coli Selection:	Ampicillin (100 ug/mL)
ORF Nucleotide Sequence:	>MG224350 representing NM_021042 Red=Cloning site Blue=ORF Green=Tags(s)

TTTTGTAATACGACTCACTATAGGGCGGCCGGAATTCGTCGACTGGATCCGGTACCGAGGAGATCTGCC
GCC**CGATCGCC**

ATGAGCCTTTCTTTTGTGGGAACAACATCTCCTCCTACAACATCTATTATGGTGTCTCCAAAACCCCT
GCTTTGTGGACGCACTCAACCTGGTCCCACATGTCTTCTGCTGTTTATCACCTTTCCAATACTGTTTCAT
TGGATGGGGGAGCCAAAGCTCAAAGTGCAAATTCATCATAACACGTGGCTTCATTTTCCGGACACAAC
CTGAGATGGATTCTGACGTTTGGCTCCTGTTTGTGCATGTTTGTGAGATAGCGGAAGGCATCGTTTCAG
ACTCGCATCGGGGTCCAGGCATCTCCACCTTTTCATGCCGGCTGTGATGGGATTTGTCGCCACAACAAC
GTCCATCGTCTATTATCATAACATTGAAACATCAAATTTCCCTAAATTACTTTTAGCTTTATTCTGTAC
TGGGTAATGGCCTTTATTACAAAGACGATAAAGTTGGTCAAATACTGGCAGTTGGGGTGGGAGTGTGAG
ACCTGCGCTTCTGCATCAGAGGATGATGGTCACTTGAATGGGCTGCTGATGGCTGTGGAGATCAATGT
CATCCGGGTCAGAAGATATGTTTCTTCATGAATCCCCAGAAAGTGAAGCCTCCGGAAGACCTCCAGGAC
CTGGGCGTGAGGTTCTCCAGCCATTTGTGAATTTACTGTCCAAAGCTACTTACTGGTGGATGAACACAC
TTATCATATCAGCTCACAGGAAACCTATCGATCTGAAGGCGATTGGAAAGTTGCCGATAGCGATGAGGGC
GGTGACCAATTATGTCTGCCTAAAGGAAGCCTATGAAGAGCAGAAGAAAAAGGCTGCCGATCATCCAAAT
CGGACTCCCTCCATATGGCTGGCCATGTACAGAGCTTTTGGGAGACCAATCCTGCTGAGCAGCACATTCC
GGTACTTGGCTGACTTGCTGGGGTTGCTGGTCTCTTTGTATATCTGGGATAGTCCAGCGAGTAAATGA
AAAGACTAACACAACAAGAGAAATGTTTCCAGAGACACTCTCATCAAAGGAATTTCTGAAAAACGCCAT
GTGCTGGCTGTCTGCTTTTCTGGCCCTTATCCTACAGAGGACCTTTCTGCAGGCTTCTACTATGTGA
CCATAGAGACCGCATCAACCTCCGTGGGGCTCTGCTGGCTATGATATACAATAAAATCCTTCGGCTCTC
GACTTCTAACCTATCCATGGGTGAGATGACCCTGGGACAGATCAACAACCTGGTTGCCATAGAAACCAAT
CAGCTCATGTGGTTCTTGTCTGTGCCAATCTGTGGCCATGCCTGTTCCAGATCATAATGGGGTGA
TCCTGCTCTACAATTTGCTTGGGTGAGTGCAGTGGTGGCGCTGCAGTCATTGTCTCCTTGCACCGAT
TCAGTACTTATTGCCACGAAGCTGGCGGAGGCTCAGAAGAGCACTCTGGATTATCCACCGAGAGGTTG



AAGAAGACGAATGAGATACTGAAGGGCATCAAACCTCCTTAAGCTGTACGCCTGGGAGCACATTTTCTGCA
 AGAGCGTGGAGGAGACACGAATGAAGGAGCTCTCCAGCCTCAAAACCTTCGCGCTCTACACGTCACCTTC
 CATCTTCATGAACGCAGCAATCCCATCGCAGCTGTTCTTGCACATTTGTGACACATGCGTACGCCAGT
 GGAACAACCTGAAGCCTGCAGAGGCCCTTTCCTCTGTCTCTTCCACATCCTCGTCACACCCTCT
 TCCTGTGTCCACGGTGGTCAGATTTCGAGTCAAAGCCATCATCAGTGTCAAAGCTGAATGAGTTTCT
 CTTGAGCGATGAGATTGGTGAGGACAGCTGGAGGGCCGGGAGGGCAGCTGCCTTCGAGTCTGTAAAG
 AAGCACCCGGAGTGGTGACAAAATGGATACTTCTCATGGGGCAGTGGTTTACTACATTGTCCAATTTG
 ACATTCGAATTCACAGGTGAGCTAACCATGATTGTAGGCCAAGTGGTTGTGGAAAATCATCTCTTCT
 CCTTGCCATCCTTGGTGAGATGCAGACCCTGGAAGGAAAAGTTTACTGGAACAATGTAATGAATCTGAG
 CCTTCTTTTGAAGCAACCCGAAGCAGAAGCAGGTATTCTGTGGCTTACGCTGCCAGAACCTTGGCTCC
 TAAATGCTACAGTTGAGGAAAATACACTTTTGGAAAGCTTTTCAACAGACAGAGGTACAAGGCTGTAC
 CGATGCCTGTCTCTTACGCCAGACATTGATTTGCTACCATTTGGAGACCAAACCTGAAATCGGAGAGAGG
 GGCATCAACCTGAGTGGGGTTCAGAGGCAGAGAATCTGCGTGGCAGGGCACTCTACCAAAACCAACA
 TCGTCTTTTGGACGACCATTCTGCCCTGGACATCCACCTGAGCGATCATTTGATGCAGGAAGGAAT
 CCTGAAGTTTCTCCAGGATGACAAGAGGACGGTTGTTCTGTGACGCACAACTGCAGTACCTGACGCAC
 GCTGACTGGATCATAGCCATGAAGGATGGCAGTGTGTTAAGGGAAGGGACTTTGAAAGACATTAGACCA
 AAGACGTGGAGCTTTATGAACACTGGAACCCCTCATGAATAGACAGGATCAAGAATTAGAAAAGGACAT
 GGAAGCAGACAAACAACACTGGAGAGGAAGACTCTCCGGAGAGCCATGTATTCAAGAGAGGCCAAGGCA
 CAGATGGAGGATGAAGATGAAGAGGAGGAAGAGGAGGAAGATGAGGAAGATAACATGTCAACGGTGTGA
 GGCTCAGGACCAAGATGCCCTGGAAGACCTGCTGGTGGTACCTCACTTCAGGAGGGTTTTTCTGCTCTT
 CCTCATGATCTTCCAAGCTTTTGAAGCACTCGGTGATTGTGGCTATAGACTACTGGCTAGCTACGTGG
 ACATCCGAATACAGTATAAACCATCCTGGAAGAGCTGACCAGACCTTCTATGTGGCTGGTTTTCAGCATCC
 TCTGTGGAGCAGGCATTTTCTTTCCTGCTGTCACCTCCCTCACCGTGAATGGATGGGCTCACAGCCGC
 CAAGAACCTCCACCACAACCTCCTCAATAAGATAATTCTCGGGCAATAAGGTTCTTTGATACCACCCG
 CTGGGGCTGATCCTCAATCGTTTTCTGCTGATACGAACATCATCGACCAGCATATCCCTCCGACCTTGG
 AGTCGCTGACGCGCTCCACCCTGCTGCTGTCTGCTATTGGGATGATCTCCTATGCTACACCCGTGTT
 TCTCGTCGCCCTTGCGCCCTGGGTGTAGCCTTTTATTTTCCAGAAATACTTCCGGTTGCTCTAAG
 GATCTCCAGGAACCTGACGACAGCACCCAGCTCCCTGCTTTGTCACTTCTCAGAAACAGCTGAAGGGC
 TCACCCTATCCGGCCCTCAGGCATGAAACCAGATTCAAGCAACGCATGCTGGAGCTGACAGACACGAA
 CAACATTGCTACTTATTTCTCAGCAGCCAACAGATGGCTGGAGGTCAGGACGGACTATCTGGGAGCG
 TGCATTGTTCTGACAGCCTCCATTGCATCCATTAGTGGCTTTCACACTGGACTGGTGGGCTTGGGCC
 TTCTCTATGCCCTCACGATAACCAATTACCTAAATGGGTTGTAAGGAACCTGGCCGACCTGGAAGTCCA
 GATGGGTGCGAGTGAAGAAAGTGAACAGTTTCTTACTATGGAGTCCGAGAATATGAAGGCCACATGGAT
 CCTTCTCAAGTCCCAGAGCACTGGCCACAGGAAGGCGAGATCAAGATTACGATCTGTGTGTCAGATATG
 AAAATAACCTGAAGCCGTTCTGAAACATGTCAAGGCTTACATCAAAACCCGGGAGAAAGTGGGCATCTG
 TGGTCGAACTGGCAGTGGGAAGTCTCCTTATCCCTGGCTTTCTCAGAATGGTGCACATATTTGACGGA
 AAGATAGTCATTGATGGGATAGACATCTCAAACCTGCCCTGCACACGCTCCGCTCCAGGCTGTCCATCA
 TTCTCCAGGACCAATCCTGTTACGCGGCTCCATCAGGTTAACCTGGATCCTGAATGCAAGTGCACAGA
 TGACAGGCTCTGGGAGGCTCTAGAAATGGCCAGCTGAAGAATATGGTCAAATCTCTGCCGAGGCTTA
 GATGCCACTGTCACCGAAGGTGGTGAGAACTTCAAGTGGTGGACAGAGACAGCTGTTCTGCCTGGCCAGGG
 CCTTTGTTGGAAGAGCAGTATACTCATCATGGATGAAGCCACTGCTTCCATCGACATGGCCACGAAAA
 CATTTTGCAGAAAGTAGTCATGACAGCCTTTCGGATCGACGGTGTGTAACCATAGCTCACCGTGTCTCT
 TCTATTGTGGATGCAGGCCTTGTGTTTGTCTTTTCTGAGGGTATTTTGTGGAGTGTGACTGTTCCAA
 ACCTGCTCCAGCACAAGAATGGCCTTTTTCTACTTTGGTGTGACCAACAAG

ACGCGTACGCGGCCGCTCGAG - GFP Tag - GTTTAA

Protein Sequence: >MG224350 representing NM_021042
 Red=Cloning site Green=Tags(s)

```

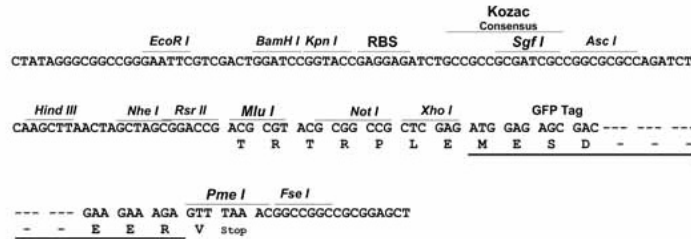
MSLSFCGNNISSYNIYYGVLQNPCFVDALNLVPHVFLFITFPILFIGWGSQSSKVQIHHNTWLHFPGHN
LRWILTFALLFVHVCEIAEGIVSDSHRASRHLHLMFPAVMGFVATTTISIVYYHNIETSNFPKLLALFLY
WYMAFITKTIKLVKYQLGWGVSDFRCITGVMVILNGLLMAVEINVIRVRRYVFFMNPQKVKPPEDLQD
LGVRFLOPFVNLLSKATYWMNTLII SAHRKPIDLKAIGKLP IAMRAVTNYVCLKEAYEEQKKAADHPN
RTPSIWLAM YRAFRPILLSSTFRYLADLLGFAGPLCISGIVQRVNEKTNTTREMFPETLSSKEFL ENAH
VLAVLLFLALILQRTFLQASYVYTIETGINLRGALLAMIYNKILRLSTSNLSMGEMTLGQINNLVAIETN
QLMWFLFLCPNLWAMPVQIIMGVILLYNLLGSSALVGAIVVLLAPIQYFIATKLAEAQKSTLDYSTERL
KKTNEILKGIKLLKLYAWEHIFCKSVEETRMKELSSLKTFALYTSLSIFMNAIPIAAVLATFVTHAYAS
GNNLKPAEAFASLSL FHILVTPFLLLSTVVRFAVKAIISVQKLNELL SDEIGEDSWRAGEGLPFESCK
KHTGVVTNGYFSWGSGLATLSNIDIRIPTGQLTMI VGVQVCGKSSLLLA ILGEMQTLGKVVYWNVNESE
PSFEATRSRSRYSVAYAAQKPWLLNATVEENITFGSPFNRQRYKAVTDACSLQPDIDLLPFGDQTEIGER
GINLSGGQRQRICVARALYQNTNIVFLDDPF SALDIHLS DHLMQEGILKFLQDDKRTVVLVTHKLQYLTH
ADWIIAMKDGSVLREGTLKDIQTKDVELYEHWKTLMNRQDQELEKDMEADQTTLERKTLRRAMYSREAKA
QMEDEDEEEEEDEEDNMSTVMRLR TKMPWKCWYLTSGGFLLFLMIFSKLLKHSVIVAIDYWLATW
TSEYSINHPGKADQTFYVAGFSILCGAGIFLCLVTSLTVEWMGLTAAKNLHNNLLNKIILGPIRFFDTP
LGLILNRF SADTNIIDQHIPP TLES LRSTLLCLSAIGMISYATPVFLVALAPLGVAFYFIQKYFRVASK
DLQELDDSTQLPLLCHFSETAEGLT TIRAFRHETRFKQRMLELTD TNNIAYLFLSAANRWLEVRTDYLGA
CIVLTASIASISGSSNSGLVGLLLYAL TITNYLNWVVRNLADLEVQMGAVKVN SFLTMESEN YEGTMD
PSQVPEHWPQEGEIKI HDLCVRYENNLKPV LKHVKAYIKPGQKVGICGRTGSGKSSLSLAFR MVDIFDG
KIVIDGIDISKLP LHTLRSRLS IILQDPILFSGSIRFNLDP ECKCTDDRLWEALEIAQLKNMVKSLPGGL
DATVTEGGENFSV GQRQLFCLARAFVRKSSILIMDEATASIDMATENILQKV VMTAFADRTVVTIAHRVS
SIVDAGLVLVFSEGILVECDTGP NLLQHKNGLFSTLVMTNK
  
```

TRTRPLE - GFP Tag - V

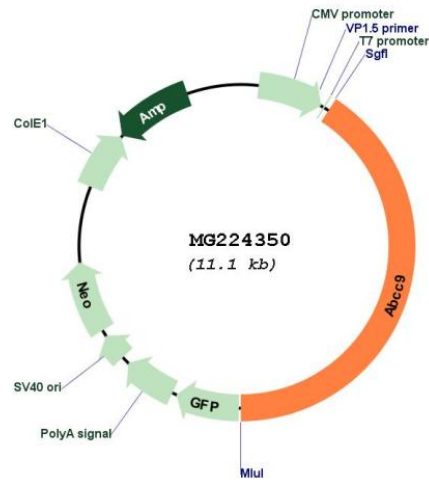
Restriction Sites: SgfI-MluI

Cloning Scheme:

Cloning sites used for ORF Shutting:



Plasmid Map:



ACCN: NM_021042

ORF Size: 4533 bp

OTI Disclaimer: The molecular sequence of this clone aligns with the gene accession number as a point of reference only. However, individual transcript sequences of the same gene can differ through naturally occurring variations (e.g. polymorphisms), each with its own valid existence. This clone is substantially in agreement with the reference, but a complete review of all prevailing variants is recommended prior to use. [More info](#)

OTI Annotation: This clone was engineered to express the complete ORF with an expression tag. Expression varies depending on the nature of the gene.

Components: The ORF clone is ion-exchange column purified and shipped in a 2D barcoded Matrix tube containing 10ug of transfection-ready, dried plasmid DNA (reconstitute with 100 ul of water).

Reconstitution Method:

1. Centrifuge at 5,000xg for 5min.
2. Carefully open the tube and add 100ul of sterile water to dissolve the DNA.
3. Close the tube and incubate for 10 minutes at room temperature.
4. Briefly vortex the tube and then do a quick spin (less than 5000xg) to concentrate the liquid at the bottom.
5. Store the suspended plasmid at -20°C. The DNA is stable for at least one year from date of shipping when stored at -20°C.

RefSeq: [NM_021042.2](#), [NP_066379.2](#)

RefSeq Size: 7433 bp

RefSeq ORF: 4536 bp

Locus ID: 20928

UniProt ID: [P70170](#)

Cytogenetics: 6 74.35 cM

Gene Summary: The membrane-associated protein encoded by this gene is a member of the superfamily of ATP-binding cassette (ABC) transporters. ABC proteins transport various molecules across extra- and intra-cellular membranes. ABC genes are divided into seven distinct subfamilies (ABC1, MDR/TAP, MRP, ALD, OABP, GCN20, White). This protein is a member of the MRP subfamily which is involved in multi-drug resistance. The human protein is thought to form ATP-sensitive potassium channels in cardiac, skeletal, and vascular and non-vascular smooth muscle. Protein structure suggests a role as the drug-binding channel-modulating subunit of the extrapancreatic ATP-sensitive potassium channels. Alternative splicing of this gene results in multiple transcript variants. [provided by RefSeq, Jul 2015]