

Product datasheet for **MG224346**

Slc25a44 (NM_178696) Mouse Tagged ORF Clone

Product data:

Product Type:	Expression Plasmids
Product Name:	Slc25a44 (NM_178696) Mouse Tagged ORF Clone
Tag:	TurboGFP
Symbol:	Slc25a44
Synonyms:	6720482A19; B430110G05Rik
Mammalian Cell Selection:	Neomycin
Vector:	pCMV6-AC-GFP (PS100010)
E. coli Selection:	Ampicillin (100 ug/mL)
ORF Nucleotide Sequence:	>MG224346 representing NM_178696 Red=Cloning site Blue=ORF Green=Tags(s)

TTTTGTAATACGACTCACTATAGGGCGGCCGGAATTCGTCGACTGGATCCGGTACCGAGGAGATCTGCC
GCC**CGATCGCC**

ATGGAGGACAAACGGAACATCCAGATCATCGAGTGGGAGCACCTGGACAAGAAGAAGTTCTATGTGTTTG
GTGTTGCATGACAATGATGATCAGGGTCAGCGTGTACCCGTTACCCTCATCCGCACCCGCTGCAGGT
CCAGAAGGGCAAGAGCCTCTACCACGGGACCTTCGATGCCTTTGTCAAGATCCTGCGAGCAGATGGAGTG
GCGGGCCTCTACCGGGGTTCTGGTCAACACCTTCACACTCATCTCCGGCCAGTGCTATGTCACCACTT
ACGAGCTCACCCGGAAGTTTGTGGCAGACTACAGCCAGAGTAACACAGTCAAATCACTCGTAGCCGGGG
CTCGGCCCTCCCTTGTGGCCAGAGCATCACGGTCCGATCGATGTTGTCTCCCAACATCTGATGATGCAG
CGGAAGGGTGAGAAAATGGTTCGCTTCCAAGTGCACGGGAACCTAGAGGGACAAGGGGTGATTGCCTTTG
GCCAGACTAAGGACATCATCAGGCAGATCCTTCGGGCTGACGGTCTCCGAGGCTTCTACCGGGGCTATGT
GGCCTCGCTGCTAACGTACATCCCAAACAGTGTGTCTGGTGGCCCTTCTACCATTCTATGCAGAGCAG
CCTGTCGCGCCTGTGCCCTCAGGAGTGCCCTCACATTGTCTTTCAAGCCATCTCTGGGCCCTGGCTGCAG
CCTGCTCCATCCTCACCAATCCCATGGATGTATCAGAACCCTGTGCAGGTTGAAGGCAAGAGCTC
CATCGTCTGACCTTCAGGCAGCTGATGGCAGAGGAGGGCCCTTGGGGCCTCATGAAGGGCCTCTCGGCA
AGAATCATCTCGGCTACCCCTCACCATCGTCATCGTGGTGGCTACGAGAGCCTCAAGAAGCTCAGCC
TGCGACCTGAGCTGGTGGACTCGAGACTG

ACGCGTACGCGGCCGCTCGAG - GFP Tag - GTTTAA



[View online »](#)

Protein Sequence: >MG224346 representing NM_178696
Red=Cloning site Green=Tags(s)

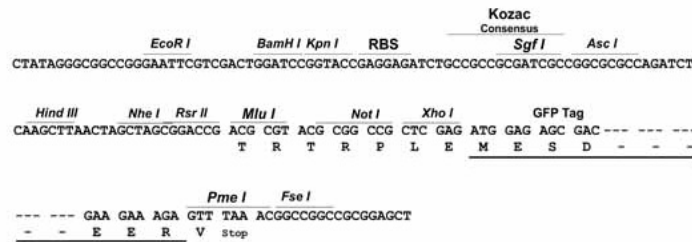
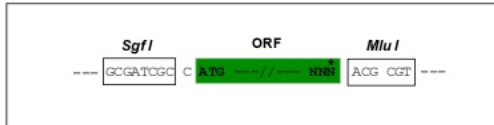
MEDKRNIQIIEWEHLDKKKFYVFGVAMTMMIRVSVYPFTLIRTRLQVQKGSLYHGTFDAFVKILRADGV
 AGLYRGLVNTFTLISGQCYVTTYELTRKFVADYSQSNTVKSLVAGGSASLVAQSITVPIDVVSQHLMMQ
 RKGEKMGRFQVHGNLEGQGVIAFGQTKDIIRQILRADGLRGFYRGYVASLLTYIPNSAVWWPFYHFYAEQ
 LSRLCPQECPHIVFQAISGPLAAATASILNTPMDVIRTRVQVEGKSSIVLTFRQLMAEEGPWGLMKGLSA
 RIISATPSTIVVVGYESLKKLSLRPELVDSRHW

TRTRPLE - GFP Tag - V

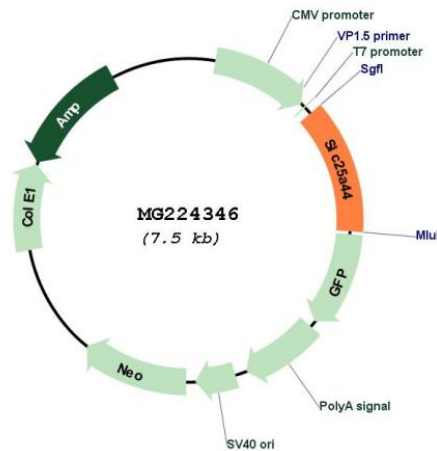
Restriction Sites: SgfI-MluI

Cloning Scheme:

Cloning sites used for ORF Shuttling:



Plasmid Map:



ACCN: NM_178696

ORF Size: 3581 bp

OTI Disclaimer:	The molecular sequence of this clone aligns with the gene accession number as a point of reference only. However, individual transcript sequences of the same gene can differ through naturally occurring variations (e.g. polymorphisms), each with its own valid existence. This clone is substantially in agreement with the reference, but a complete review of all prevailing variants is recommended prior to use. More info
OTI Annotation:	This clone was engineered to express the complete ORF with an expression tag. Expression varies depending on the nature of the gene.
Components:	The ORF clone is ion-exchange column purified and shipped in a 2D barcoded Matrix tube containing 10ug of transfection-ready, dried plasmid DNA (reconstitute with 100 ul of water).
Reconstitution Method:	<ol style="list-style-type: none">1. Centrifuge at 5,000xg for 5min.2. Carefully open the tube and add 100ul of sterile water to dissolve the DNA.3. Close the tube and incubate for 10 minutes at room temperature.4. Briefly vortex the tube and then do a quick spin (less than 5000xg) to concentrate the liquid at the bottom.5. Store the suspended plasmid at -20°C. The DNA is stable for at least one year from date of shipping when stored at -20°C.
RefSeq:	NM_178696.3
RefSeq ORF:	1002 bp
Locus ID:	229517
Cytogenetics:	3 F1
Gene Summary:	Mitochondrial solute transporter which transports branched-chain amino acid (BCAA; valine, leucine and isoleucine) into mitochondria in brown adipose tissue (BAT) (PubMed:31435015). BAT is involved in BCAA catabolism and actively utilizes BCAA in the mitochondria for thermogenesis (PubMed:31435015).[UniProtKB/Swiss-Prot Function]