

Product datasheet for **MG224327**

Clcn3 (NM_173873) Mouse Tagged ORF Clone

Product data:

Product Type:	Expression Plasmids
Product Name:	Clcn3 (NM_173873) Mouse Tagged ORF Clone
Tag:	TurboGFP
Symbol:	Clcn3
Synonyms:	Clc3
Mammalian Cell Selection:	Neomycin
Vector:	pCMV6-AC-GFP (PS100010)
E. coli Selection:	Ampicillin (100 ug/mL)



[View online »](#)

ORF Nucleotide Sequence:

>MG224327 representing NM_173873
 Red=Cloning site Blue=ORF Green=Tags(s)

TTTTGTAATACGACTCACTATAGGGCGGCCGGAATTCGTGACTGGATCCGGTACCGAGGAGATCTGCC
 GCC**CGGATCGCC**

ATGGAGTCTGAGCAGCTGTTCCATAGAGGCTACTATAGAAACAGCTACAACAGCATAACCCAGCGCGAGTA
 GCGATGAGGAGCTCCTAGATGGAGCAGGTGCCATTATGGACTTTCAGACTTCTGAAGATGACAATTTGTT
 AGACGGGGACACAGCAGCTGGAACCTATTATACAATGACAAATGGAGGCAGCATTAAATAGCTCTACACAC
 TTGCTGGATCTTTTGGATGAGCCTATCCAGGTGTGGTACCTACGATGATTTCCATACTATTGACTGGG
 TGCGAGAGAAGTGAAGGACAGAGAAAGGCACAGACGGATCAACAGTAAAAAAAAAGAATCAGCATGGGA
 AATGACAAAAAGTCTGTATGACGCCTGGTCAAGATGGCTTGTGTACTGACGGGACTGGCATCAGGG
 GCACTAGCTGGATTGATAGACATTGCTGCTGACTGGATGACTGACCTGAAGGAGGGCATCTGCCTCAGTG
 CATTGTGGTACAACCATGAACAGTGTGTTGGGGCTCTAATGAGACAACGTTTGAAGAGAGGGATAAATG
 TCCACAGTGGAAAACATGGGCAGAGTTAATCATTGGCCAAGCAGAGGGCCCTGGATCTTATATCATGAAC
 TACATCATGTACATCTTTTGGGCTTTGAGTTTTGCCTTCTTGCAGTTTCTTTGGTGAAAGTATTTGCTC
 CATATGCCTGTGGCTCTGGAATCCAGAGATTAATACTATTTTGGAGTGGATTTATCATCAGAGGATACTT
 GGGAAAATGGACTTTAATGATTAATACTATCACGTTAGTGTGGCTGTGGCATCAGGTTTGGATTTAGGA
 AAAGAAGTCCCCTGGTACATGTTGCCTGCTGTGGAAACATCTTTTCTACCTCTTCCAAAGTATA
 GCACCAATGAAGCTAAAAAGAGGGAGGTGCTGTGAGCCGCTCAGCTGCTGGGGTTTCTGTGGCTTTTGG
 TGCACCGATCGGAGGAGTCTTTTTAGCTTGGAGGAGTTAGCTATTATTTTCTCTCAAACTTTATGG
 AGATCATTTTTTGTGCTGCTTTGGTGGCAGCATTGTTTTGAGATCCATCAATCCATTTGGTAACAGCCGTC
 TGGTCTCTTTTATGTGGAGTACATACACCATGGTACCTTTTTGAACTGTTTCTTTTATCTCTCTAGG
 GGTATTTGGAGGGCTTTGGGGAGCTTTTTTTATTAGGGCAAATATTGCCTGGTGTGCTGACGCAAGTCC
 ACCAAATTTGAAAGTATCCTGTTCTCGAAGTCATTATTGTTGCAGCCATTACTGCTGTGATAGCCTTCC
 CCAACCCATACACAAGGCTCAACACCAGTGAAGTATTAAGAGCTGTTTACAGATTGTGGGCCGTTGGA
 ATCCTCTCTCTGTGACTACAGAAATGACATGAATGCCAGTAAAATTGTTGACGATATCCTGACCGT
 CCAGCAGGCGTTGGAGTATATTCAGCTATCTGGCAGTTGTGCCTAGCGCTCATATTTAAAATAATAATGA
 CAGTATCACTTTTGGTATCAAGGTCCCCTCAGGCTTGTATCCCCAGCATGGCCATTGGAGCCATTGC
 AGGGAGAATTGTGGGGATCGCTGTGGAGCAGCTTGCCACTATCACACGACTGGTTTATCTTCAAGGAG
 TGGTGTGAGGTTGGGGCTGACTGCATCACTCCCGGCTGTATGCCATGGTTGGGGCTGCTGCGTGTAG
 GTGGTGTGACAAGAATGACTGTGCTCTGGTGGTTATTGTTTTGAACTTACTGGAGGCTTGAATATAT
 TGTTCCTCTTATGGCTGCAGTAATGACCAGTAAATGGGTTGGTGTGCTTTTGGTAGGGAAGGTATTTAT
 GAAGCACACATCCGACTAAATGGGTACCCTTCTTGGATGCAAAAAGAAGTCACTCATACAACCTGG
 CTGCTGATGTTATGAGACCTCGAAGAAGTGACCCTCCCTTAGCTGTTTTGACACAGGACAATATGACAGT
 AGATGACATAGAAAACATGATTAATGAAACCAGCTATAATGGCTTTCCTGTTATAATGTCAAAAAGTCT
 CAGAGATTAGTGGGATTTGCCCTCAGAAGAGACCTGACTATTGCAATAGAAAAGTCCAGAAAAAACAAG
 AAGGGATTGTTGGCAGTCTCGGGTGTGTTTTGCACAGCATACTCCATCTTCCAGCAGAAAGTCCAGC
 GCCATTAACACTGAGAAGCATCCTTGACATGAGCCCTTTTACAGTGACAGACCACACCCCAATGGAGATT
 GTGGTAGACATCTTTCGAAAGCTTGGTCTGAGGCAGTGCCTTGTAACTACAACGACGACGCTCCTTGCCA
 TTATAACAAAAAAGATATCCTCCGTCATATGGCCCAGACGGCAAACCAAGACCCCGCTTCAATAATGTT
 CAAC

ACGCGTACGCGGCCGCTCGAG – GFP Tag – GTTTAA

Protein Sequence: >MG224327 representing NM_173873
Red=Cloning site Green=Tags(s)

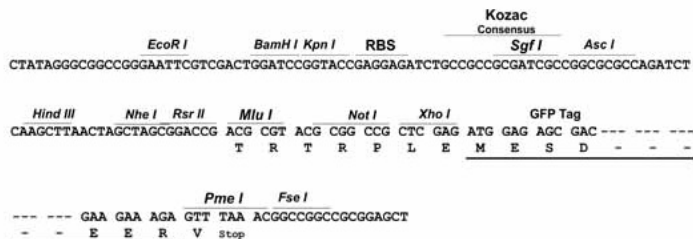
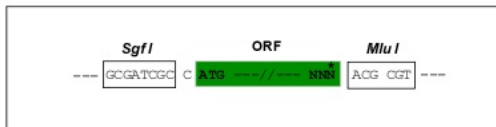
```
MESEQLFHRGYRNSYNSITSASSDEELLDGAGAIMDFQTSEDDNLDDGDTAAGTHYMTNGGSINSSTH
LLDLLDEPIPGVGTYYDDFHTIDWVREKCKDRERHRRINSKKKESAWEMTKSLYDAWSGWL VVTLTGLASG
ALAGLIDIAADWMTDLKEGICLSALWYNHEQCCWGSNETTFEERDKCPQWKTWAEIIGQAEGPGSYIMN
YIMYIFWALSFAFLAVSLVKVFAPYACGSGIPEIKTILSGFIIRGYLGKWTLMIKTITLVLAVASGLSLG
KEGPLVHVACCCGNIFSFLPKYSTNEAKKREVL SAASAAGVSVAFGAPIGGVLFSLLEEVSYFFPLKTLW
RSFFAALVAAFVLRSLNPFNSRLVLFYVEYHTPWYLFELFPFILLGVFGGLWGFAFFIRANIAWCRRRKS
TKFGKYPVLEVIIVAAITAVIAFPNPYTRLNLTSELIKELFTDCGPLESSSLCDYRNDMNASKIVDDIPDR
PAGVGVYSAIWQLCLALIFKIIIMTVFTFGIKVPSGLFIPSMAGIAGRIVGIAVEQLAYYHHDWFIFKE
WCEVGADCITPGLYAMVGAACLGGVTRMTVSLVVIVFELTGLEYIVPLMAAVMTSKWVGDAFGREGIY
EAHIRLNGYFFLDAKEEFTHHTLAADVMPRRSDPPLAVLTQDNMTVDDIENMINETSNGFVIMSKES
QRLVGFALRRDLTIAIESARKKQEGIVGSSRVCF AQHTPSLPAESPRPLKLR SILDMSPFTVTDHTPMEI
VVDFRKLGLRQCLVTHNGRLLGIITKKDILRHMAQTANQDPASIMFN
```

TRTRPLE - GFP Tag - V

Restriction Sites: Sgfl-MluI

Cloning Scheme:

Cloning sites used for ORF Shutting:


ACCN: NM_173873

ORF Size: 2454 bp

OTI Disclaimer: The molecular sequence of this clone aligns with the gene accession number as a point of reference only. However, individual transcript sequences of the same gene can differ through naturally occurring variations (e.g. polymorphisms), each with its own valid existence. This clone is substantially in agreement with the reference, but a complete review of all prevailing variants is recommended prior to use. [More info](#)
OTI Annotation: This clone was engineered to express the complete ORF with an expression tag. Expression varies depending on the nature of the gene.

Components: The ORF clone is ion-exchange column purified and shipped in a 2D barcoded Matrix tube containing 10ug of transfection-ready, dried plasmid DNA (reconstitute with 100 ul of water).

Reconstitution Method:

1. Centrifuge at 5,000xg for 5min.
2. Carefully open the tube and add 100ul of sterile water to dissolve the DNA.
3. Close the tube and incubate for 10 minutes at room temperature.
4. Briefly vortex the tube and then do a quick spin (less than 5000xg) to concentrate the liquid at the bottom.
5. Store the suspended plasmid at -20°C. The DNA is stable for at least one year from date of shipping when stored at -20°C.

RefSeq: [NM_173873.1](#), [NP_776298.1](#)

RefSeq Size: 5705 bp

RefSeq ORF: 2457 bp

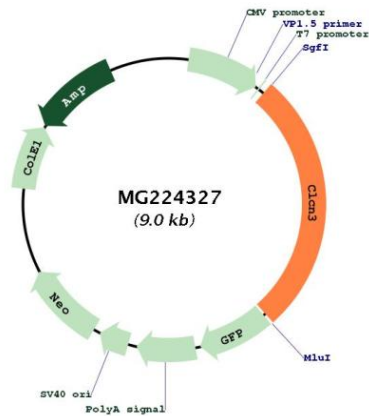
Locus ID: 12725

UniProt ID: [P51791](#)

Cytogenetics: 8 30.9 cM

Gene Summary: Mediates the exchange of chloride ions against protons. Functions as antiporter and contributes to the acidification of the endosome and synaptic vesicle lumen, and may thereby affect vesicle trafficking and exocytosis. May play an important role in neuronal cell function through regulation of membrane excitability by protein kinase C. It could help neuronal cells to establish short-term memory.[UniProtKB/Swiss-Prot Function]

Product images:



Circular map for MG224327