

Product datasheet for **MG224243**

Mesp1 (NM_008588) Mouse Tagged ORF Clone

Product data:

Product Type: Expression Plasmids
Product Name: Mesp1 (NM_008588) Mouse Tagged ORF Clone
Tag: TurboGFP
Symbol: Mesp1
Synonyms: bHLHc5
Mammalian Cell Selection: Neomycin
Vector: pCMV6-AC-GFP (PS100010)
E. coli Selection: Ampicillin (100 ug/mL)
ORF Nucleotide Sequence: >MG224243 representing NM_008588
 Red=Cloning site Blue=ORF Green=Tags(s)

TTTTGTAATACGACTCACTATAGGGCGCCGGGAATTCGTCGACTGGATCCGGTACCGAGGAGATCTGCC
 GCC**CGATCGCC**

ATGGCCAGCCCCTGTGCGAGCCGCGCTCCGAGTCTGGATCCTGAGTCCCCTGGTCGGCAGCCACCGA
 TGCCTTCCGATGGGAACAGCGTCTGCTCCCAGCCTGGTCTCGGACCCGTGGGACGGTGCCAGGCCAG
 CAGCCCTGCACCACCCTGCGCCCGCCGGCCGGCGTGTGGGACCCGGGTAGGCGGGGACGCACGGT
 AGCCGCTGGGTAGCGGACAGCGGCAGAGCGCCAGCGAGCGGGAGAAGCTACGTATGCGCACTCGCC
 GCGCGCTGCACGAGCTGCGCCGTTCTTGCCGCCATCCGTGGCACCACCGCCAGAACCTGACCAAGAT
 CGAGACGCTGCGCTGGCCATCCGCTACATTGGCCACCTGTGGCTGTGCTGGGACTCAGCGAGGACAAC
 CTCCGGGACAGCGGCACGCGGTGTACCTCGAGGCTGCCCGCTGTGCCCGACAGCGACCTGGCGCAGT
 CGCAGTCGCTCGGTCCCGTTTAAAGCCCGCCGTCTGCAGCGGGGTGTCGTGGGGATCCCGCCTGCCTA
 CCCTAGACCCCGAGTCGCCGCAGAATCGTGGGACCCATCGTTCCTGTACGCAGAAACAGCATCCCAGGAA
 AGGCAGGAAATGGAGCCAGTCCCTCATCTCCGCTTTCAGCAGCGACATGCTGGCTCTTCTAGAAACCT
 GGACGCCCGCCGAGGAGTGGCCGCTGCC

ACGCGTACGCGGCCGCTCGAG - GFP Tag - GTTTAA



[View online »](#)

Protein Sequence: >MG224243 representing NM_008588
 Red=Cloning site Green=Tags(s)

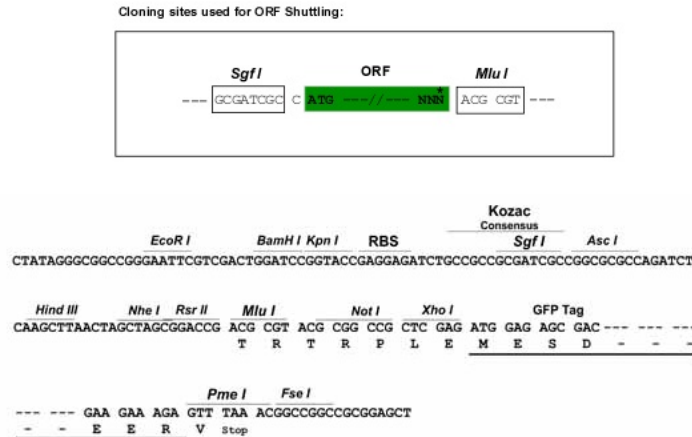
MAQPLCEPRSESWILSPAGRQPPMPDGNVSVSPAWSSDPWDGAQASSPAPPCARPARRAGTPGRRGTHG
 SRLGSGQRQSASEREKLRMRTLARALHELRRFLPPSVAPTQNLTKIETLRLAIRYIGHLSAVLGLSEDN
 LRRQRHAVSPRGCLCPDSDLAQSQSLGPRLSPAVCSGVSWSPPAYPRRVAAESWDPSFLYAETASQE
 RQEMEPSPLFSSDMLALLETWTPPEWPPA

TRTRPLE - GFP Tag - V

Chromatograms: https://cdn.origene.com/chromatograms/ja2177_e05.zip

Restriction Sites: SgfI-MluI

Cloning Scheme:



ACCN: NM_008588

ORF Size: 729 bp

OTI Disclaimer: The molecular sequence of this clone aligns with the gene accession number as a point of reference only. However, individual transcript sequences of the same gene can differ through naturally occurring variations (e.g. polymorphisms), each with its own valid existence. This clone is substantially in agreement with the reference, but a complete review of all prevailing variants is recommended prior to use. [More info](#)

OTI Annotation: This clone was engineered to express the complete ORF with an expression tag. Expression varies depending on the nature of the gene.

Components: The ORF clone is ion-exchange column purified and shipped in a 2D barcoded Matrix tube containing 10ug of transfection-ready, dried plasmid DNA (reconstitute with 100 ul of water).

Reconstitution Method:

1. Centrifuge at 5,000xg for 5min.
2. Carefully open the tube and add 100ul of sterile water to dissolve the DNA.
3. Close the tube and incubate for 10 minutes at room temperature.
4. Briefly vortex the tube and then do a quick spin (less than 5000xg) to concentrate the liquid at the bottom.
5. Store the suspended plasmid at -20°C. The DNA is stable for at least one year from date of shipping when stored at -20°C.

RefSeq: [NM_008588.2](#), [NP_032614.2](#)

RefSeq Size: 1098 bp

RefSeq ORF: 732 bp

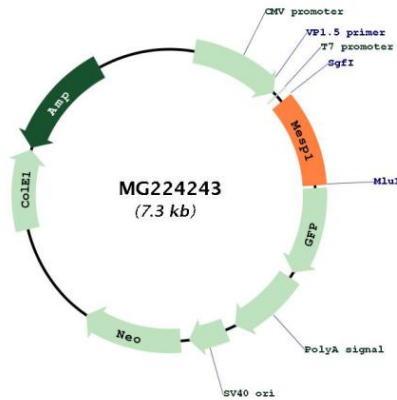
Locus ID: 17292

UniProt ID: [P97309](#)

Cytogenetics: 7 45.16 cM

Gene Summary: Transcription factor. Plays a role in the epithelialization of somitic mesoderm and in the development of cardiac mesoderm. Defines the rostrocaudal patterning of the somites by participating in distinct Notch pathways.[UniProtKB/Swiss-Prot Function]

Product images:



Circular map for MG224243