

Product datasheet for **MG224239**

Anks6 (NM_001024136) Mouse Tagged ORF Clone

Product data:

Product Type:	Expression Plasmids
Product Name:	Anks6 (NM_001024136) Mouse Tagged ORF Clone
Tag:	TurboGFP
Symbol:	Anks6
Synonyms:	2210417J20Rik; Ankrd14; b2b1801.1Clo; Gm635; SamCystin; Samd6
Mammalian Cell Selection:	Neomycin
Vector:	pCMV6-AC-GFP (PS100010)
E. coli Selection:	Ampicillin (100 ug/mL)



[View online »](#)

ORF Nucleotide Sequence:

>MG224239 representing NM_001024136
 Red=Cloning site Blue=ORF Green=Tags(s)

TTTTGTAATACGACTCACTATAGGGCGGCCGGGAATTCGTCGACTGGATCCGGTACCGAGGAGATCTGCC
 GCC**GCGATCGCC**

ATGGGCGAGGGCGCGCTGGCCCCGGCCTGCAGCTGCTGCTCCGCGCCTGCGAGCAGGGTGACACCGACA
 CGGCGCGCGCCTGCTGGAGCCAGGCGCGGACCCGGTCGCGGGGCCAGGCGGGAGCGGAGCCGGCAGG
 GCCCGAGCGGTCGCGGAGCGGAGCCGGGGCGCCGGTGCCGGTGGACTGTTCCGATGAGGCGGGCAAC
 TCGGCGCTGCAGCTGGCGGCGCCGGTGGCCACGAGCCACTCGTAAGTTCTGCTGCGCCGCGGAGCCT
 CGGTCAACAGCCCAACCACTACGGCTGGAGCGGCTCATGCAGGCGGCCAGGTGTGGGCATGTGAGCGT
 GGCACACCTCCTTTGGATCATGGAGCCGATGTCAATGCTCAGAATCGGCTGGGTGCCAGTGTGCTCACC
 GTGGCTTCTCGGGTGGCCACCTGGGTGTGGTGAAGCTGCTGCTAGAGGCGGGAGCCATTGTGGACCACC
 ACACCCCTTCTGGAGAGTCGCCAGCAACGGGAGGCAGCGGGGATGAACTGCTGGCATTACAGCCCTGAT
 GGCCGCTGTTAGCATGGGCACGAGCCGTGGTACGTCTGCTGATGGAGTGGGTGCGGACCCTAACCCAC
 ACAGCCCGGACTGTGGGCTGGAGCCCTCTGATGCTGGCAGCCCTCCTTGGGAAGCTGAATGTGGCGCAGC
 AGCTGGTGGAGAAGGGAGCCAACCTGACCACCTCAGTGTACTGGAGAAGACTGCCTTCGAGTTGCTCT
 CGACCCGAAGTACAGGGATCTTGTCTGAATACCTGGACCCACTGACCACCTGTGAGGCCAAAAACAGATGAG
 GAGAAGAGGCGACCAGATATTTTCTATGCCCTGAAGATGGGGAACCTCCAGCTGGTGAAGGAGATTGCGG
 ACGAAGACCCCAACCATGTGAACCTGGTCAACGGGACGGGGCGACCCCACTGATGCTGGCTGCTGTAC
 GGGGCACTTGCCCTGGTACAGCTGCTGGTGGAGAAGCACGCAGACATGGACAAGCAGGACAGCGTGCAT
 GGCTGGACGGCCCTCATGCAGGCCACCTACCACGGAAATAAAGAAATTGTCAAGTATCTGCTAAATCAAG
 TGACACTGAACTTGTTTCGACTGCTGGCGTCTGTGTGCATGCAGGTGAATAAAGACCGAGGTCGGCCAGC
 CACCGGCCACCCCTGCCCACTCGAAGGCCAGGCAACCTGGAGCATCCCTGTGCTGCCGACGACAAGG
 GAGGCTGAAGTCTGGTGGAGCCGGATGTCCAACAGGTTCCGAAAGCTCAAACCTATGCAGACACTGCC
 ACGCGGGCTGGCTGCCAACCAACCTTTGCCTTCTCTGACGAGCCTGAGCTGGCGCTGGACTCCACCATG
 CGGGCACCCCCCAGGACAGGACTAGCCACCTGGGCCACCTGAAGCAGCCCATGCAACCAAGACAGTG
 GTCCTGGAAACCAAGAAGAGAGAAGGGAGATGTGTTACTGACAACCATGGCTACCAGCAGGCCAGTCAA
 ATCCCCAGCATCTCAGAAGCCCCGCTCCCTGCCAGCTCTGGGAGCTTTAACCACTCGCCTCACTCC
 TCAGGGGGTGCCAGTGGCATTGGTGGCATGAGCAGGCTGGTGGTGGAGCTGCATAGCCGCTCAGGTGGCA
 GGGTAGACAGTGTCTGTCCAGATCGCTGCTCAGAGGAAGAAAGCAGCCGGCTTGTGTGAGCAGAAGCC
 CCGCCAGCAGTCCAGTCCCGTGGGGCCAGCCACCAGCTCCAGCCCGCTGAGCTCCAGCCTCCCTCCCG
 AGCAGTGGTAGTGGCTCTTCCAGTGGCCCTTCCAGCAGCAAGAACTGGACCCAGCAAACGGCCTCCCT
 CCGGAACCTTCTGTACCTCTAAAAGCACCTCTCCACCCCTCACGCCCTCTCCCTCGCCAAAGGCCACAC
 TGCAGAGTCTTCGGTGTCTTCTCCTCGTCTACCGGCAGTCTAAGAGCAGTGGGGGCTCCAGCAGTGGC
 ACCATCACCGATGAGGATGAACTGACTGGAATCCTTAAGAAGTTATCACTTGAGAAATACCAGCCCATCT
 TCGAGGAACAAGAGGTGGACATGGAAGCCTTCTCACACTCACCGACGGGACCTGCAGGAGCTGGGGAT
 TAAGCGGATGGCTCCCGCAGCAGATCCTGGCGGCCATCTCTGAGCTGAATGCGGGCAAGGGGCGTGAG
 AGGCAGATTCTACAGAAACCATTCACAACCTCCACTTTCCTTTGAAAGCAGTGCCAGCAACACCAGAG
 CCCTGGCAATGGTCCCTCCATGGCCGGATGGACAAGGCCGGAAGAAACCGTGTCTAGCAGGAGG

ACCGTACGCGGCCGCTCGAG – GFP Tag – GTTTAA

Protein Sequence: >MG224239 representing NM_001024136
 Red=Cloning site Green=Tags(s)

```

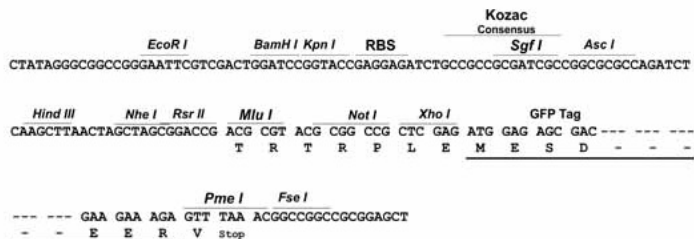
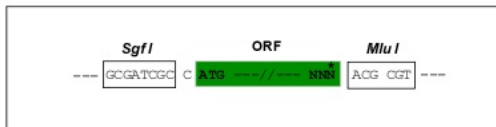
MGEALAPGLQLLLRACEQGDTDTARRLLEPGADPVAGPEAGAEPAGPEAVRAAEAGAPVPVDCSDEAGN
SALQLAAAGGHEPLVRFLLRRGASVNSRNHYGWSALMQAARCGHVSVAHLLLDHGADVNAQNRLGASVLT
VASRGGHLGVVKLLLEAGAIVDHHTPSGESPATGGSGDELLGITALMAAVQHGEAVVRLMEWGADPNH
TARTVGWSPMLAALLGKLNVAQQLVEKGANPDHLSVLEKTAFEVALDRKYRDLAEYLDPLTTVRPKTDE
EKRRPDIFYALKMGNFQLVKEIADEDPNHVNLVNGDGATPLMLAAVTGHLPLVQLLVEKHADMDKQDSVH
GWTALMQATYHGNKEIVKYLLNQGADVLRKNGYTAFDLVMLLNDPDELVRLLASVCMQVKNDRGRPS
HRPPLPHSKARQPWSIPVLPDDKGGKSWWSRMSNRFRKLMQTLPRGLAANQPLPFSDEPELALDSTM
RAPPQDRTSHLGPPEAAHATKDSGPGNPRREKGDVLLTTMATSRPVKFSPISRSPASSSGSFNHSPHS
SGGASGIGGMSRLGGELHSRSGGSVDSVLSQIAAQRKKAAGLCEQKPRQSSPVGPATSSSPPELPASLP
SSGSGSSSGPSSSKLDPSKRPPSGTSATSKSTSPTLTPSPSPKGHTAESSVSSSSSHRQSKSSGSSSG
TITDEDELTGILKKLSLEKYQPIFEEQEVDMFAFLTLTDGDLQELGIKTDGSRQQILAAISELNAGKGRE
RQILQETIHNHSSSFESSASNTRAPGNPMSMAGWTRPEETVSSRR
  
```

TRTRPLE - GFP Tag - V

Restriction Sites: Sgfl-Mlul

Cloning Scheme:

Cloning sites used for ORF Shutting:



ACCN: NM_001024136

ORF Size: 2445 bp

OTI Disclaimer: The molecular sequence of this clone aligns with the gene accession number as a point of reference only. However, individual transcript sequences of the same gene can differ through naturally occurring variations (e.g. polymorphisms), each with its own valid existence. This clone is substantially in agreement with the reference, but a complete review of all prevailing variants is recommended prior to use. [More info](#)

OTI Annotation: This clone was engineered to express the complete ORF with an expression tag. Expression varies depending on the nature of the gene.

Components: The ORF clone is ion-exchange column purified and shipped in a 2D barcoded Matrix tube containing 10ug of transfection-ready, dried plasmid DNA (reconstitute with 100 ul of water).

Reconstitution Method:

1. Centrifuge at 5,000xg for 5min.
2. Carefully open the tube and add 100ul of sterile water to dissolve the DNA.
3. Close the tube and incubate for 10 minutes at room temperature.
4. Briefly vortex the tube and then do a quick spin (less than 5000xg) to concentrate the liquid at the bottom.
5. Store the suspended plasmid at -20°C. The DNA is stable for at least one year from date of shipping when stored at -20°C.

RefSeq: [NM_001024136.2](#)

RefSeq Size: 3552 bp

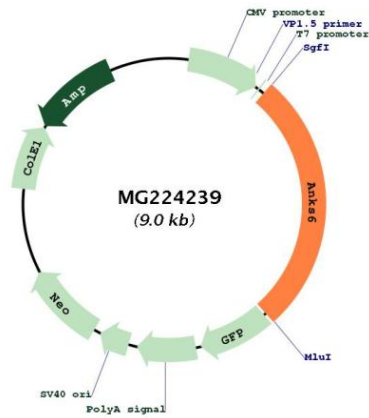
RefSeq ORF: 2448 bp

Locus ID: 75691

Cytogenetics: 4 B1

Gene Summary: Required for renal function.[UniProtKB/Swiss-Prot Function]

Product images:



Circular map for MG224239