

## Product datasheet for **MG224222**

### Tssk4 (NM\_027673) Mouse Tagged ORF Clone

#### Product data:

**Product Type:** Expression Plasmids  
**Product Name:** Tssk4 (NM\_027673) Mouse Tagged ORF Clone  
**Tag:** TurboGFP  
**Symbol:** Tssk4  
**Synonyms:** 1700020B19Rik; 4933424F08Rik; TSK-4; TSSK-4  
**Mammalian Cell Selection:** Neomycin  
**Vector:** pCMV6-AC-GFP (PS100010)  
**E. coli Selection:** Ampicillin (100 ug/mL)  
**ORF Nucleotide Sequence:** >MG224222 representing NM\_027673  
Red=Cloning site Blue=ORF Green=Tags(s)

TTTTGTAATACGACTCACTATAGGGCGGCCGGAATTCGTCGACTGGATCCGGTACCGAGGAGATCTGCC  
GCC**CGATCGCC**

ATGGGGAAGGGAGACACCTCGGAAACAGCATCAGCCACCCAGCCTATCGCTCTGTCTGATGGAGGAGTATG  
GTTATGAGGTGGCAAGATCATTGGCCATGGCTCCTATGGAAGTGTCTATGAGGCATACTACACAAAGCA  
GAAGGTCATGGTGGCTGTCAAGATCATCTCGAAGAAGAAGGCCTCTGAAGACTATCTCAACAAGTTCCTA  
CCACGTGAGATACAGGTAATGAAAGTCTACGGCACAAGTACCTCATCAACTTCTATCAGGCCATTGAGA  
CCACATCCCGAGTATACATCATTGGAGCTGGCTCAGGGCGGTGATGTCCTCGAATGGATCCAACGATA  
TGGGGCCTGTGCTGAGACCCTTGTGGCAAGTGGTTCTCCAGATGGCTTGGGCATCGCCTACCTGCAC  
AGCAAGGGCATCGTGCACCGGATTTAAAGTTGGAGAACCTGTTGCTGGACAAGCGGGAGAATGTGAAGA  
TATCGGACTTTGGCTTCGCCAAGATGGTGCCTTAGCCAGCCTGTGCATAGTAGCCCTTCTTACCGCCA  
AATGAACAGCCTTTCCACCTCAGCCAGACCTACTGTGGCAGCTTTGCTTACGCCTGCCCGGAGATCTTG  
CTAGGCTTGCCCTACAACCCTTCTGTCTGACACCTGGAGCATGGGCGTCATCCTTACACTCTAGTGG  
TTGCACGGCTGCCCTTGTGATGACACCAATCTCAAGAAGCTGTGAGAGAAACCCAGAAGGAGGTCACCTT  
CCCAGCTAACTTGACCATCTCCAGGAGTGCAAGAACCTGATCCTCCAGCTGCTACGCCAATCTACCAAG  
CGTGCCACCATCCTAGATGTCTCAGGGACCCCTGGATGCTCAAGTTCAGCCTGAGCAACCTTCGAATG  
AAATCAGGCTGCTCGAGGCCATGTACCAACCCACCAGCTCTGCTAAACGGCACCGTCTTGGAAATCAC  
AACC

**ACGCGT**ACGCGGCCGCTCGAG - GFP Tag - GTTTAA



[View online »](#)

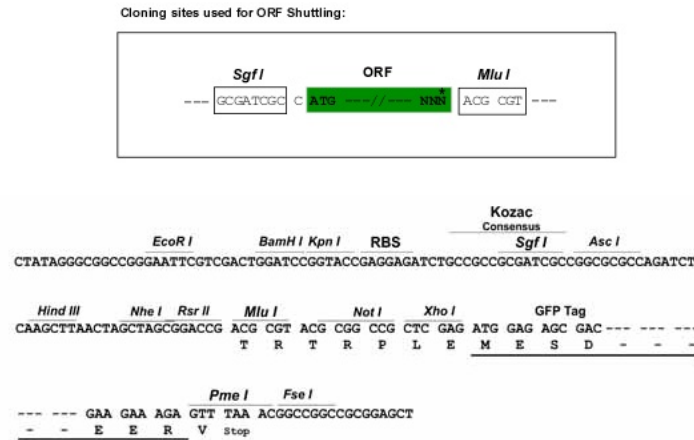
**Protein Sequence:** >MG224222 representing NM\_027673  
 Red=Cloning site Green=Tags(s)

MGKGDTSATATPAYRSMEEYGYEVGKIIGHGSYGTVEAYYTKQKVMVAVKIIISKKKASEDYLNKFL  
 PREIQVMKVLRHKYLINFYQAIETTSRVYIILELAQGGDVLEWIQRYGACAETLAGKWFSQLMALGIAYLH  
 SKGIVHRDLKLENLLLDKRENVKISDFGFAMKMPSSQPVHSSPSYRQMNSLSHLSTYCGSFAYACPEIL  
 LGLPYNPFLSDTWSMGVILYTLVVARLPFDDTNLKKLLRETQKEVTFPANLTISQECKNLILQLLRQSTK  
 RATILDVLRDPWMLKFQPEQPSNEIRLLEAMYQPTSSAKRHQSLEITT

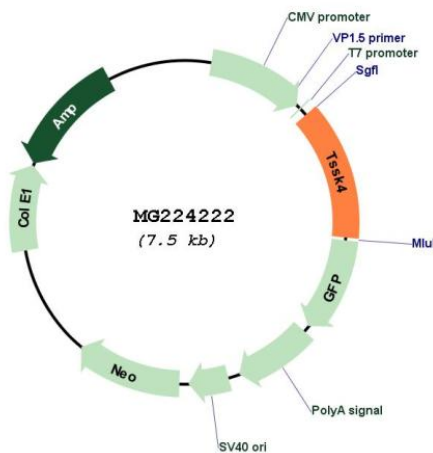
TRTRPLE - GFP Tag - V

**Restriction Sites:** SgfI-MluI

**Cloning Scheme:**



**Plasmid Map:**



**ACCN:** NM\_027673

**ORF Size:** 984 bp

<b>OTI Disclaimer:</b>	The molecular sequence of this clone aligns with the gene accession number as a point of reference only. However, individual transcript sequences of the same gene can differ through naturally occurring variations (e.g. polymorphisms), each with its own valid existence. This clone is substantially in agreement with the reference, but a complete review of all prevailing variants is recommended prior to use. <a href="#">More info</a>
<b>OTI Annotation:</b>	This clone was engineered to express the complete ORF with an expression tag. Expression varies depending on the nature of the gene.
<b>Components:</b>	The ORF clone is ion-exchange column purified and shipped in a 2D barcoded Matrix tube containing 10ug of transfection-ready, dried plasmid DNA (reconstitute with 100 ul of water).
<b>Reconstitution Method:</b>	<ol style="list-style-type: none"><li>1. Centrifuge at 5,000xg for 5min.</li><li>2. Carefully open the tube and add 100ul of sterile water to dissolve the DNA.</li><li>3. Close the tube and incubate for 10 minutes at room temperature.</li><li>4. Briefly vortex the tube and then do a quick spin (less than 5000xg) to concentrate the liquid at the bottom.</li><li>5. Store the suspended plasmid at -20°C. The DNA is stable for at least one year from date of shipping when stored at -20°C.</li></ol>
<b>RefSeq:</b>	<a href="#">NM_027673.3</a> , <a href="#">NP_081949.1</a>
<b>RefSeq Size:</b>	1237 bp
<b>RefSeq ORF:</b>	987 bp
<b>Locus ID:</b>	71099
<b>UniProt ID:</b>	<a href="#">Q9D411</a>
<b>Cytogenetics:</b>	14 C3
<b>Gene Summary:</b>	Isoform 1: Serine/threonine kinase which is involved in male germ cell development and in mature sperm function (PubMed:17927909, PubMed:23599433, PubMed:23054012, PubMed:25361759, PubMed:26940607). May be involved in the Cre/Creb signaling pathway (PubMed:26940607). Phosphorylates CREB1 on 'Ser-133' in vitro and can stimulate Cre/Creb pathway in cells (By similarity). Phosphorylates CREM on 'Ser-116' in vitro (PubMed:26940607). Phosphorylates ODF2 on 'Ser-95' (PubMed:26961893).[UniProtKB/Swiss-Prot Function]