

## Product datasheet for **MG224209**

### Nectin3 (NM\_021495) Mouse Tagged ORF Clone

#### Product data:

Product Type:	Expression Plasmids
Product Name:	Nectin3 (NM_021495) Mouse Tagged ORF Clone
Tag:	TurboGFP
Symbol:	Nectin3
Synonyms:	2610301B19Rik; 3000002N23Rik; 4921513D19Rik; AA407785; AU016832; AW538082; CD113; Pvr13
Mammalian Cell Selection:	Neomycin
Vector:	pCMV6-AC-GFP (PS100010)
E. coli Selection:	Ampicillin (100 ug/mL)



[View online »](#)

**ORF Nucleotide Sequence:**

>MG224209 representing NM\_021495  
 Red=Cloning site Blue=ORF Green=Tags(s)

TTTTGTAATACGACTCACTATAGGGCGGCCGGGAATTCGTCGACTGGATCCGGTACCGAGGAGATCTGCC  
 GCC**CGGATCGCC**

ATGGCGCGGACCCGGGCGGCCCGTTGTGCTCTGGAGCGGCAAAGCACAACTTTCCTCGGCGTTTC  
 CTCCCGCGGCCGACTGCTGCTGCCGGCCCGACGCCCGCGCTGCTGCTGCTTATTCCCCCTGCT  
 TCTCTTCTCCCGCTCTGTGGTGCCTTAGCTGGATCAATTATTGTGGAGCCACATGTCACAGCAGTGTGG  
 GGAAAGAATGTTTCATTGAAGTGTTAATTGAAGTGAATGAAACTATAACCCAGATCTCATGGGAGAAGA  
 TACATGGCAAAGTACACAGACTGTTGCAGTTCATCATCCTCAGTATGGATTCTCTGTTCAAGGAGATTA  
 TCAGGGAAAGAGTCTTGTAAAACTATCACTTAATGATGCAACAATTACTCTGCATAACATAGGCTTC  
 TCAGATTCTGGAAAATATATATGCAAAGCCGTTACATCCCACTTGAAAATGCTCAGTCTCTACAACAG  
 TGAAGTGTGTTAGTTGAACCCACAGTGAAGCTGATAAAAGGGCCGGATTCTTTAATTGATGGAGGGAATGA  
 GACAGTAGCAGCCGTTTGTGTAGCAGCCACTGGAAAGCCAGTCGCACAGATTGACTGGGAAGGTGATCTT  
 GGTGAAAATGGAATCTAGTACAACCTCTTTTCTAATGAAACAGCAACGATTGTCAGCCAATACAAGCTGT  
 TTCCACAAAGATTTGCTCGAGGAAGGCGAATTACTTGTGTTGTA AACATCCAGCCTTAGAAAAGGACAT  
 TCGCTACTCTTTCATACTAGACATACAGTATGCTCCTGAAGTTTCAGTAACAGGATATGATGGAAAATTGG  
 TTCGTGGGAAGAAAAGGTGTTAACTCAAGTGAATGCTGATGCAAACCTCCACCCTTCAAGTCCGCTGT  
 GGAGCAGGTTGGATGGACAATGGCCTGATGGTTTATTGGCGTCAGATAAATACTCTTCATTTTGTCCATCC  
 ATTGACTGTCAATTATTTGCGGTTTATGTCTGTAAGATCAAAATCCCTTGGTCAAAGAAGTGAATCAA  
 AAGGTTATCTACATTTAGATCCTCTACCACCACCCTTCAGCCGACAGTTTCAAGTGGCATTCTCAC  
 CTGCTGACGTCAGGATATAGCAACAGAGCATAAAAAATGCCCCTTTCCTTTGTCAACTTTGGCAACAT  
 TAAGGATGACACAATTGGCACCATCATTGCTAGTGTAGTGGGTGGGCTCTCTTCTTAGTCTTGTGAGC  
 ATTTTAGCTGGGTATTCTGCTATAGGAGACGACGGACGTTTCGTGGAGACTACTTTGCCAAAACTACA  
 TTCCACCATCAGACATGCAGAAAGAATCACAGATTGATGTTCTTACCAGGATGAGCTGGATTCTTACC  
 AGACAGTGTAAAAAGGAAAAACAAAAATCCAGTAAACAACCTGATCCGCAAAGACTACTTAGAGGAGCCT  
 GAGAAAACCTCAGTGAATAATGTAGAGAACCTCACTAGGTTTAAAAGACCGATGGATTACTATGAAGATC  
 TAAAAATGGGAATGAAGTTTGTGAGTGAACGCTACAATGAAAGTGAAGATGGTTTGGTTTCTCATGT  
 AGATGGCTCCGTAATTTCCAGGAGGGAGTGGTATGTC

**ACGCGTACGCGGCCGCTCGAG** – GFP Tag – GTTTAA

**Protein Sequence:**

>MG224209 representing NM\_021495  
 Red=Cloning site Green=Tags(s)

MARTPGPAPLCPGGGKAQLSSAFPPAAGLLLPAPTPPPLLLLLIPLLLFSRLCGALAGSIIVEPHVTAVW  
 GKNVSLKCLIEVNETITQISWEKIHGKSTQTVAVHHPQYGFVSVQGDYQGRVLFKNYSLNDATITLHNIGF  
 SDSGKYICKAVTFPLGNAQSSTTVTLVEPTVSLIKGPDSLIDGGNETVAAVCVAATGKPVQIDWEGDL  
 GEMESSTTSFPNETATIVSQYKLFPTRFARGRRITCVVKHPALEKDIRYSFILDIQYAPEVSVTYDGNW  
 FVGRKGVNLKCNADANPPPFKSVWSRLDGQWPDGLLASDNTLHFVHPLTVNYSVGVYVCKVSNLQGRSDQ  
 KVIYISDPPTTTTLQPTVQWHSSPADVQDIATEHKKLPFPLSTLTLKDDTIGTIIASVVGALFLVLS  
 ILAGVFCYRRRTFRGDYFAKNYIPPSDMQKESQIDVLHQDELDSYPDSVKKENKPNVNNLIRKDYLEEP  
 EKTQWNNVENLTRFERPMDYEDLKMGMKFFVSDERYNESEDGLVSHVDGVSISRREWY

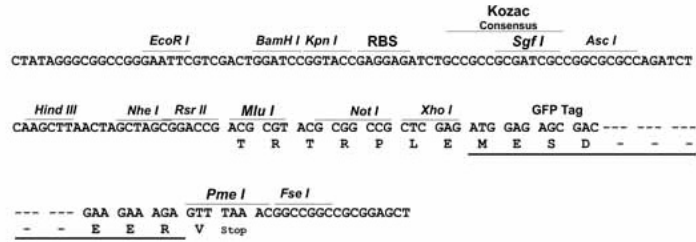
**TRTRPLE** – GFP Tag – V

**Restriction Sites:**

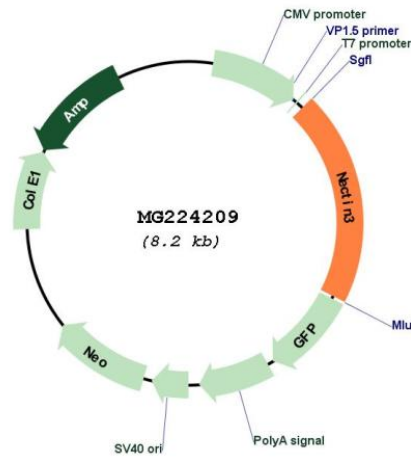
Sgfl-MluI

Cloning Scheme:

Cloning sites used for ORF Shutting:



Plasmid Map:



ACCN:

NM\_021495

<b>ORF Size:</b>	1647 bp
<b>OTI Disclaimer:</b>	The molecular sequence of this clone aligns with the gene accession number as a point of reference only. However, individual transcript sequences of the same gene can differ through naturally occurring variations (e.g. polymorphisms), each with its own valid existence. This clone is substantially in agreement with the reference, but a complete review of all prevailing variants is recommended prior to use. <a href="#">More info</a>
<b>OTI Annotation:</b>	This clone was engineered to express the complete ORF with an expression tag. Expression varies depending on the nature of the gene.
<b>Components:</b>	The ORF clone is ion-exchange column purified and shipped in a 2D barcoded Matrix tube containing 10ug of transfection-ready, dried plasmid DNA (reconstitute with 100 ul of water).
<b>Reconstitution Method:</b>	<ol style="list-style-type: none"><li>1. Centrifuge at 5,000xg for 5min.</li><li>2. Carefully open the tube and add 100ul of sterile water to dissolve the DNA.</li><li>3. Close the tube and incubate for 10 minutes at room temperature.</li><li>4. Briefly vortex the tube and then do a quick spin (less than 5000xg) to concentrate the liquid at the bottom.</li><li>5. Store the suspended plasmid at -20°C. The DNA is stable for at least one year from date of shipping when stored at -20°C.</li></ol>
<b>RefSeq:</b>	<a href="#">NM_021495.4</a> , <a href="#">NP_067470.1</a>
<b>RefSeq Size:</b>	2169 bp
<b>RefSeq ORF:</b>	1650 bp
<b>Locus ID:</b>	58998
<b>UniProt ID:</b>	<a href="#">Q9JLB9</a>
<b>Cytogenetics:</b>	16 B5
<b>Gene Summary:</b>	Plays a role in cell-cell adhesion through heterophilic trans-interactions with nectins-like or other nectins, such as trans-interaction with NECTIN2 at Sertoli-spermatid junctions. Trans-interaction with PVR induces activation of CDC42 and RAC small G proteins through common signaling molecules such as SRC and RAP1. Also involved in the formation of cell-cell junctions, including adherens junctions and synapses. Induces endocytosis-mediated down-regulation of PVR from the cell surface, resulting in reduction of cell movement and proliferation. Plays a role in the morphology of the ciliary body.[UniProtKB/Swiss-Prot Function]