

## Product datasheet for **MG224193**

### Mprip (NM\_012027) Mouse Tagged ORF Clone

#### Product data:

Product Type:	Expression Plasmids
Product Name:	Mprip (NM_012027) Mouse Tagged ORF Clone
Tag:	TurboGFP
Symbol:	Mprip
Synonyms:	9530046C02; AA536749; AI647711; C76423; mKIAA0864; p116Rip; Rhoip3; RIP3
Mammalian Cell Selection:	Neomycin
Vector:	pCMV6-AC-GFP (PS100010)
E. coli Selection:	Ampicillin (100 ug/mL)
ORF Nucleotide Sequence:	>MG224193 representing NM_012027 Red=Cloning site Blue=ORF Green=Tags(s)

TTTTGTAATACGACTCACTATAGGGCGGCCGGAATTCGTCGACTGGATCCGGTACCGAGGAGATCTGCC  
GCC**CGATCGCC**

ATGTCGGCGGCCAAGGAAAACCCGTGCAGGAAATTTAGGCCAACATCTTCAACAAGAGCAAGTGTGAGA  
ACTGCTTCAAGCCCCGCGAGTGCATCTGCTCAACGACGAGGACCTGACGCAGGCAAAACCCATTTATGG  
TGGCTGGTGTCTCTGGCTCCAGATGGCACTGACTTTGACAACCCAGTGCACCGGTACGGAAATGGCAG  
CGACGATCTTTCATCCTTTATGAGCATGGCCTCTTGCATATGCCCTGGATGAGATGCCACCACCCTCC  
CTCAGGGCACCATCAACATGAACAGTGCACAGATGTGGTGGATGGGAGGCCCGCACAGGGCAGAAGTT  
CTCCCTCTGCATCCTGACACCTGACAAGGAACATTTTATCAGGGCAGAAACCAAGGAGATCATCAGTGGG  
TGGTTAGAGATGCTCATGGTGTATCCTCGAACCAAGCAGAACCAGAAAGAAACCGAAAGTAGAGC  
CACCTACCCACAGGAGCCTGGGCTGCTAAGATGGCTGTCACTAGCAGTGTGGCGGCAGCAGTGGTAG  
CAGCAGCAGCATTCCAGTGTGAGAAAGTTCCACCACCAAAATCCACACTCTGGCAGGAAGAAATGAGA  
GCCAAAGACCAACCTGATGGGACCAGCCTGAGTCCAGCTCAAAGTCCCAGCCAAAGCCAGCCTCTGCTG  
CTTGACACCCACGGGAACCAGGACTAGAAAGCAAAGAAGATGAAAGCACCATAAGTGGGGACCGTGTGGA  
TGGTGGTCGAAAGTACGGGTAGAGAGCGGCTACTTCTCCCTGGAGAAGGCCAAGCAGGACCTGAGGGCT  
GAGGAGCAGCTGCCCCACTACTCTCCACCCAGCCACACAGCAGGAGGTTCCAGGTAA  
TTGAGAAATTTGAGGCTTGGACATTGAAAAAGCAGAGCAGATGGAAACCAACATGCTGATTCTGACCAC  
TCCATCAAGTGACACTCGTCAGGGCCGAGTGTGAGAGACGGCCATCCCTAGAAAGCGGGACTTTGCCAGC  
GAAGCCCCACAGCTCCTCTCAGATGCTTGTCCCTGTCTCCACACCGAAGAGCCAAGTATTGGACA  
GGAGGTCCACAGAATCCTCCATGACGCTGACCTGCTGAATTTCAAGAAAGGCTGGCTAACCAAGCAGTA  
TGAGGATGGCCAGTGAAGAAACACTGGTTTGTCTGGCAGATCAGAGCCTGAGATACTACAGGGATTCC  
GTGGCTGAGGAGGACGCTGACCTAGATGGAGAAATTAAGTGTCCACTTGTATGATGCTACTGAGTATC  
CAGTCCAGAGAACTATGGCTTTAGATACATACCAAGGAGGTTGAGTTCACCCTCTCAGCCATGACATC  
TGGCATACGACGGAACCTGGATCCAGACCATTATGAAACATGTGCTCCAGCATCTGCCCCAGATGTGACC



AGCTCATTGCCTGAGGGAAGAATAAAAGCACATCTTTTGGACCTGCTCAAGGTCAACTGAGAAGCAAG  
 AAGCTGAGCCAGGAGAGCCAGATCTCTGAACAAAAGAGCCGTGCTCGAGAGCGGAGGCCGGGAGGGTCG  
 CTCCAAGACCTTTGACTGGGCTGAATCCGCCCTATAACAACAGGCCCTGGCTCAAGAAAGGGCCAGCGCT  
 GTTGGGCTTTCTGATTCTGGTGACCCTGGGTGTCTTGAAGCCGAGCCAGGTGAGCTGGAGCGTGAACGAG  
 CTCGACGTCGAGAAGAACGCCGAAGCGCTTTGGGATGCTGGACACCATTGATGGACCAGGAATGGAGGA  
 CACAGCCCTACGTATGGACATCGACCCGAGCCAGGGCTGCTGGGAACCCCTGACCTCAAGACACAGAAT  
 GATCCACGTGAAATTGAGCAGCGTTGGCATCAAGTGGAGACCACCCTCTCAGGGAGGAGAAACAGGTGC  
 CCATTGCCCTCTGCACCTATCCTTGGAGGACAGAAGTGAAGCCGCTCTCCACACATGAGCTCACCTCTCT  
 GCTAGAGAAGGAGCTGGAGCAGAGCCAGAAAGAAGCCTCGGATCTTCTAGAGCAGAACCGCTTCTACAG  
 GACCAGTTAAGGGTGGCCCTGGGAGAGAACAGAGTGCCCGGAGGGCTATGTGCTGCAGGCTACATGTG  
 AGCGAGGCTTTGCCGCAATGGAGGAGACACATCAGAAGAAGATTGAAGACCTACAGAGGCAACACCAGCG  
 GGAGCTAGAGAAGCTGCGGGAGGAAAAAGACCGCCTCTGGCTGAGGAGACAGCTGCCACCATATCAGCC  
 ATTGAAGCCATGAAGAATGCTCACCGAGAGGAGATGGAACGAGAGTTAGAGAAGAGCCAGCGGTCTCAGA  
 TCAGCAGCATCAATTCAGACATAGAAGCCCTGAGGCGACAGTACCTGGAGGAGCTGCAGTCACTGCAGCG  
 GGAGCTGGAAGTCTTTAGAGCAGTACTCCAAAAGTGCCTGGAGAATGCACACCTAGCCAGGCGCTG  
 GAGGCCGAGCGTACGGCCCTGCGCAATGCCAGCGTGAGAACCAGGAGCTCAACGCCACAAACCAGGAGC  
 TGAATAACCGCCTGGCTGCGGAGATCACACGGTTGCGGACACTACTGACTGGAGACGGTGGTGGGGAGTC  
 CACTGGGTTGCCCTCTCACACAGGCAAGGATGCCTATGAGTTAGAGGTCTTGTTCGGGTCAAAGAGTCA  
 GAAATCCAGTACCTGAAACAGGAGATCAGCTCCCTCAAGGATGAACTCCAGACAGCCCTGCGGGATAAGA  
 AGTATGCTAGTGACAAGTACAAAGACATCTACACTGAGCTCAGCATTGCCAAGGCCAAGGCTGACTGCGA  
 CATCAGCAGGCTGAAGGAGCAGCTGAAAGCAGCCACAGAGGCACTGGGCGAGAAATCTCTGAAGGCACT  
 ACTGTGTCAGGATATGACATAATGAAATCTAAAAGCAATCCTGACTTCTGAAGAAAGACAGATCCTGTG  
 TTACCCGCAACTCAGAAACATCAGGTCCAAGTCCGTAATTGAGCAGGTCTCATGGGATAAC

ACGCGTACGCGGCCGCTCGAG - GFP Tag - GTTTAA

**Protein Sequence:**

>MG224193 representing NM\_012027  
 Red=Cloning site Green=Tags(s)

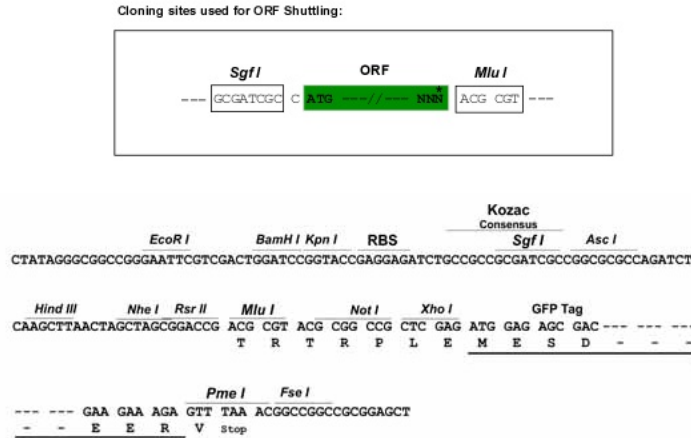
MSAAKENPCRKFQANIFNFKSKCQNCFKPRESHLLNDEDLTQAKPIYGGWLLLAPDGTDFDNPVHRSRKWQ  
 RRFILYEHGLLRYALDEMPPTLPQGTINMNQCTDVVDGEARTGQKFSLCILTPDKEHFIRAETKEIISG  
 WLEMLMYYPRTNKQNKKKRQVEPPTPQEPGPAKMAVTSSSGSSGSSSIPSAEKVPTTKSTLWQEEMR  
 AKDQPDGTSLSAQSPSQSPPAACTPREPGLSKEDESTISGDRVDGGRKVRVESGYFSLEKAKQDLRA  
 EEQLPPLLSPSPSTPHSRRSQVIEKFEALDIEKAEHMETNMLILTTSSDTRQGRSERRAIPRKRDFAS  
 EAPTAPLSDACPLSPHRAKSLDRRSTESSMTPDLLNFKKGWLTQYEDGQWKHWFVLADQSLRYRDS  
 VAEAAADLDGEINLSTCYDVTEYPVQRNYGFQIHTKEGEFTLSAMTSGIRRNWIQTIMKHVLPASAPDVT  
 SSLPEGKNKSTSFETCSRSTEKQEAEPGEPDPEQKSRARERRRREGRSKTFDWAEFRPIQQALAQERASA  
 VGSSDSGDPGCLAEPEGELERARRRREERRRFGMLDTIDGPGMEDTALRMDIDRSPGLLGTPLDKTQN  
 VHVEIEQRWHQVETTPLEEKQVPIAPLHLSLEDRSERLSTHELTSLEKELEQSQKEASDLLEQNRLQ  
 DQLRVALGREQSAREGYVLQATCERGF AAMEETHQKKIEDLQRQHORELEKLREEKDRLLAEETAATISA  
 IEAMKNAHREEMERELEKSQRSQISSINSIDIEALRRQYLEELQSVQRELEVLSEQYSQKLENAHLAQA  
 EAERQALRQCQRENQELNAHNQELNNRLAAEITRLRLLTGDDGGESTGLPLTQGDAYELEVLLRVKES  
 EIQLKQEISSLKDELQALRDKKYASDKYKDIYTELSIAKAKADCISRLKEQLKAATEALGEKSPEGT  
 TVSGYDIMKSKSNPDFLKKDRSCVTRQLRNIRSKSVIEQVSWDN

TRTRPLE - GFP Tag - V

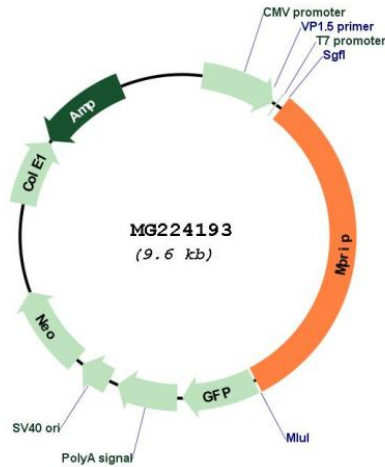
**Restriction Sites:**

Sgfl-MluI

Cloning Scheme:



Plasmid Map:



ACCN: NM\_012027

ORF Size: 3072 bp

OTI Disclaimer: The molecular sequence of this clone aligns with the gene accession number as a point of reference only. However, individual transcript sequences of the same gene can differ through naturally occurring variations (e.g. polymorphisms), each with its own valid existence. This clone is substantially in agreement with the reference, but a complete review of all prevailing variants is recommended prior to use. [More info](#)

<b>OTI Annotation:</b>	This clone was engineered to express the complete ORF with an expression tag. Expression varies depending on the nature of the gene.
<b>Components:</b>	The ORF clone is ion-exchange column purified and shipped in a 2D barcoded Matrix tube containing 10ug of transfection-ready, dried plasmid DNA (reconstitute with 100 ul of water).
<b>Reconstitution Method:</b>	<ol style="list-style-type: none"><li>1. Centrifuge at 5,000xg for 5min.</li><li>2. Carefully open the tube and add 100ul of sterile water to dissolve the DNA.</li><li>3. Close the tube and incubate for 10 minutes at room temperature.</li><li>4. Briefly vortex the tube and then do a quick spin (less than 5000xg) to concentrate the liquid at the bottom.</li><li>5. Store the suspended plasmid at -20°C. The DNA is stable for at least one year from date of shipping when stored at -20°C.</li></ol>
<b>RefSeq:</b>	<a href="#">NM_012027.2</a> , <a href="#">NP_036157.2</a>
<b>RefSeq Size:</b>	8784 bp
<b>RefSeq ORF:</b>	3075 bp
<b>Locus ID:</b>	26936
<b>UniProt ID:</b>	<a href="#">P97434</a>
<b>Cytogenetics:</b>	11 B1.3
<b>Gene Summary:</b>	Targets myosin phosphatase to the actin cytoskeleton. Required for the regulation of the actin cytoskeleton by RhoA and ROCK1. Depletion leads to an increased number of stress fibers in smooth muscle cells through stabilization of actin fibers by phosphorylated myosin. Overexpression of MRIP as well as its F-actin-binding region leads to disassembly of stress fibers in neuronal cells.[UniProtKB/Swiss-Prot Function]