

## Product datasheet for **MG224170**

### **Ect2 (NM\_001177625) Mouse Tagged ORF Clone**

#### **Product data:**

Product Type:	Expression Plasmids
Product Name:	Ect2 (NM_001177625) Mouse Tagged ORF Clone
Tag:	TurboGFP
Symbol:	Ect2
Synonyms:	A1528536; mKIAA4037
Mammalian Cell Selection:	Neomycin
Vector:	pCMV6-AC-GFP (PS100010)
E. coli Selection:	Ampicillin (100 ug/mL)



[View online »](#)

**ORF Nucleotide Sequence:**

>MG224170 representing NM\_001177625  
 Red=Cloning site Blue=ORF Green=Tags(s)

TTTTGTAATACGACTCACTATAGGGCGGCCGGAATTCGTCGACTGGATCCGGTACCGAGGAGATCTGCC  
 GCC**CGCATCGCC**

ATGGCTGACGACAGCGTGTACCATCTCCTACTGAGATAACTAGCTTGGCAGACTCTTCAGTGTGGT  
 CTAAGGTTGCTGGAATGTCTAAGGAAAACCTTGTGCTTGGCGTCTACTTCAAATGTTGATGAGGAAATGCC  
 GCAGGTTGAAGCAAGAGTGATAATGGTCCAGGATGCTGGGAAACAAGAAGAACTTCTAAAGGCCCTAAAG  
 GAAATGAAAGTGCCTGTGTAAGATGGACTCAATGGAAGAATTTGAAAGTTGGATTCCCCAGAATTTG  
 AGAATATATTTGTAGTTACTGACTTCCAGAATTCTGTCTTCAATGACTTATACAAGGCTGATTGTAGGAT  
 TGTGGGCCACCGATTACTCAACTGTGCACAAAGGGGAGAGCCCTTCCATTTTCTGCCGGCCGCTG  
 TATTGTACGAGTATGCTGAACCTGGTGTCTGCTTCACTGGATTACAGGAAGAAGGAGGAGCTTGTCAAAT  
 TGGTGACATTGGTTCATCATATGGGTGGAGTTATTCGAAAAGAGTGAATTCAAAGTAACACATCTGGT  
 GGCAAATGTACACAAGCGGAAAAATTTAGGGTGTCTGTGAGCCTGGGCACTCCAATTATGAAGCCAGAA  
 TGATTTATAAAGCGTGGGAAAGACGCAATGAACAGTGTTCCTGTGCAGCAGTTGATGACTTTAGAATG  
 AATTTAAAGTTCCTCCATTCCAAGATTGCATTTAAGTTTCTGGGATTTTCCAGATGAAGAGAAACATAG  
 TATGGAAGAAATGACTGAAATGCAAGGAGGTAGCTATTTACCAGTTGGGGATGAAAGGTGCACTCACCTT  
 ATTGTTGAAGAGAATACAGTAAAGGACCTTCCATTCGAACCTTCAAAGAACTTTTTGTTGTCAAGCAAG  
 AGTGGTTCTGGGAAGCATTAGATGGACGCTCGTGCAGGAGAGACTATGATTTGTATGAAAAGGCTAA  
 TACTCTGAGCTCAAGAAATCGGTGTCTGTCTTCTCTAAGTACTCCAAACAGCAACCGCAAGAGACGG  
 AGATTGAAAGAGACCCTGGCTCAGCTCTCAGGGAGACTGACCTCTCCCTTCCCTCCCGGAAGCGGC  
 CCTCAGCTGAGCATTCTTTTCTATTGGCTCACTCTGGATATCTCCAACACCCGAGTCCAGCATCCA  
 CTATGGAGAAACACCGAAGTCTGTGCTAAGTCTTCTAGAAGTTCTACTCCAGTTCTCCAAAGCAGTCA  
 GCCAGGTGGCAGGTGGCGAAAGAGCTCTACCAGACTGAGAGCAATTATGTCAATATACTGGCCACAATCA  
 TTCAATATTTAGGTGCCCTTAGAAGAAGAAGGACAGCGTGGTGGCCTATTCTTGACCTGAGGAGAT  
 CAAGACTATTTTTGGGAGCATCCAGATATCTTTGATGTGCATATGAAGATCAAGGATGATCTTGAAGAC  
 CTTATTGCTAACTGGGATGAGAGCAGAAGTATTGGTGACATCTTTCTAAATATGCAAAGATTTGGTAA  
 AAACCTACCCTCCGTTTGTAACTTCTTTGAAATGAGCAAGGAAATGATCATTAAATGTGAGAAACAAA  
 GCCCAGATTTTCATGCTTCTCAAGATAAATCAAGCTAAACCAGAATGTGGACGACAGGCCTTGTGGAA  
 CTTCTCATCCGGCCAGTGCAGAGGCTACCCAGTGTGCTTTACTTTTAAACGATCTTAAAAGCATACAG  
 CTGATGAAAATCCAGACAAAAGCACTTTAGAAAAGCTATTGGATCACTAAAAGAAGTAATGACACATAT  
 CAATGAGGATAAGAGAAAAACAGAAGCACAGAAGCAAATTTTGTGTTGTTTATGAAGTAGATGGATGC  
 CCAGCTAATCTTATCTTCTCATCGGAGCCTGGTGAACGAGTGGAAACGGTTTCCCTTGGTGAGCACC  
 CTTGCGACCGAGGAGAACAAGTCACTCTTCTCTTCAATGACTGCCTCGAGATAGCAAGAAAGCGGCA  
 CAAGGTTATTGGCACTTTTAGAAGTCTCAGACCCGACCCCGCCCGCTTCTCTGAAGCACATTCAT  
 CTCATGCCTCTTCTCAGATTAAGAAGGTGCTGGACATCCGAGAGACAGAAGATTGTCACAATGCCTTTG  
 CCTTGTGTAAGGCCACCAACAGAACAGGCCAATGTACTGCTCAGCTTCCAGATGACGTGAGGAGGCT  
 TCCAAAGGAGAGCTGGCTGAAGATGCTGTGCCGACATGTAGCCAACACCATTTGTAAGGAGATGCTGAG  
 AATCTTATGTATGTGGCTGATCCAGAATCTTTGAAGTAAATACAAAAGATATGGATAGTACATTGAGTC  
 GAGCATCTAGAGCAATAAAGAAGACTTCAAAAAGGTTACAAGGGCATTCTTTTTTCCAAAACCTCCAA  
 GAGAGCCCTCGGATGGCTTTTTCATCATCCCATAGCTCAGAGGGAAGGAGTCTCCGAGCAGTGGCAAG  
 GTTGCTGTGAGCCGTCTGTCCAGCACATCATCCTTAGCAGGATTCCATCTCCCTCCCTTGTGAGCCTCC  
 CTTCTTTCTTTGAACGGAGAAGTCATACATTAAGTCGATCTACAACCTCACTTGATA

**ACGCGT**ACGCGGCCGCTCGAG – GFP Tag – GTTTAA

**Protein Sequence:** >MG224170 representing NM\_001177625  
 Red=Cloning site Green=Tags(s)

MADDSVLPSPTEITSLADSSVFDSKVAGMSKENLCLASTSNVDEEMPQVEARVIMVDAGKQEELLKALK  
 EMKVPCVKMDSMEEFESLDSPEFENIFVVTDFQNSVFNLYKADCRIVGPPVILNCAQRGEPLPFSRPL  
 YCTSMNLNLVLCFTGFRKKEELVKLVTLVHHMGGVIRKECNSKVTHLVANCTQGEKFRVAVSLGTPIMKPE  
 WIYKAWERRNEQCFCAAVDDFRNEFKVPPFQDCILSFLGFSDDEEKHSMEEMTEMQGGSYLPVGDERTHL  
 IVEENTVKDLPFEPSSKLFVVKQEFWGSIQMDARAGETMYLYEKANTPELKKSVLLSLSTPNSNRKRR  
 RLKETLAQLSRETDLSPFPKRKPSAEHLSIGSLLDISNTPESSIHYGETPKSCAKSSRSSTPVPPKQS  
 ARWQVAKELYQTESNYVNILATIIQLFQVPLEEEGQRGGPILAPEEIKTIFGSIPIDFVHMKIKDDLED  
 LIANWDESRSIGDIFLKYAKDLVKTYPPFVNFEMSKEMI IKCEKQKPRFHAFKINQAKPECGRQSLVE  
 LLIRPVQRLPSVALLNLDLKKHTADENPKSTLEKAIGSLKEVMTHINEDKRKTEAQKQIFDVVVEVDGC  
 PANLLSSHRSLVQRVETVSLGEHPCDRGEQVTLFLFNDCLEIARKRHKVI GTFRSPHDRTRPPASLKHII  
 LMPLSQIKKVLDIRATEDCHNAFALLVRPTEQANVLLSFQMTSEELPKESWLKMLCRHVANTICKADAE  
 NLMYVADPESFEVNTKMDSTLSRASRAIKKTSKKVTRAFSFSKTPKRALRMALSSSHSSEGRSPSSGK  
 VAVSRLSSTSSLAGIPSPSLVSLPSFFERRSHTLSRSTTHLI

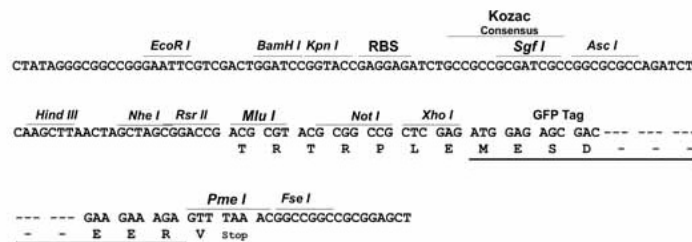
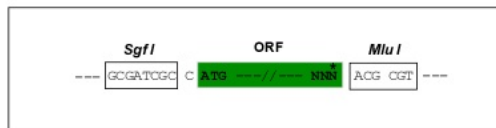
TRTRPLE - GFP Tag - V

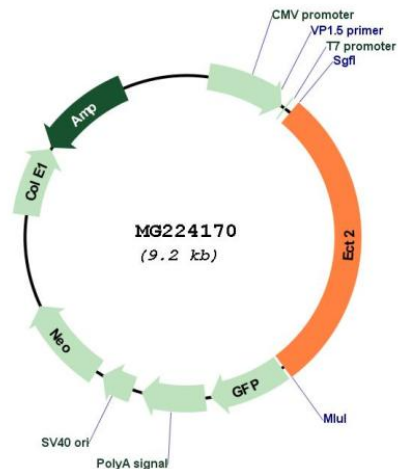
**Restriction Sites:**

SgfI-MluI

**Cloning Scheme:**

Cloning sites used for ORF Shuttling:



**Plasmid Map:**


**ACCN:** NM\_001177625

**ORF Size:** 2646 bp

**OTI Disclaimer:** The molecular sequence of this clone aligns with the gene accession number as a point of reference only. However, individual transcript sequences of the same gene can differ through naturally occurring variations (e.g. polymorphisms), each with its own valid existence. This clone is substantially in agreement with the reference, but a complete review of all prevailing variants is recommended prior to use. [More info](#)

**OTI Annotation:** This clone was engineered to express the complete ORF with an expression tag. Expression varies depending on the nature of the gene.

**Components:** The ORF clone is ion-exchange column purified and shipped in a 2D barcoded Matrix tube containing 10ug of transfection-ready, dried plasmid DNA (reconstitute with 100 ul of water).

**Reconstitution Method:**

1. Centrifuge at 5,000xg for 5min.
2. Carefully open the tube and add 100ul of sterile water to dissolve the DNA.
3. Close the tube and incubate for 10 minutes at room temperature.
4. Briefly vortex the tube and then do a quick spin (less than 5000xg) to concentrate the liquid at the bottom.
5. Store the suspended plasmid at -20°C. The DNA is stable for at least one year from date of shipping when stored at -20°C.

**RefSeq:** [NM\\_001177625.1](#), [NP\\_001171096.1](#)

**RefSeq Size:** 4002 bp

**RefSeq ORF:** 2649 bp

**Locus ID:** 13605

**UniProt ID:** [Q07139](#)

**Cytogenetics:** 3 A3

**Gene Summary:** Guanine nucleotide exchange factor (GEF) that catalyzes the exchange of GDP for GTP. Promotes guanine nucleotide exchange on the Rho family members of small GTPases, like RHOA, RHOC, RAC1 and CDC42. Required for signal transduction pathways involved in the regulation of cytokinesis. Component of the centralspindlin complex that serves as a microtubule-dependent and Rho-mediated signaling required for the myosin contractile ring formation during the cell cycle cytokinesis. Regulates the translocation of RHOA from the central spindle to the equatorial region. Plays a role in the control of mitotic spindle assembly; regulates the activation of CDC42 in metaphase for the process of spindle fibers attachment to kinetochores before chromosome congression. Involved in the regulation of epithelial cell polarity; participates in the formation of epithelial tight junctions in a polarity complex PARD3-PARD6-protein kinase PRKCQ-dependent manner. Plays a role in the regulation of neurite outgrowth. Inhibits phenobarbital (PB)-induced NR1H3 nuclear translocation. Stimulates the activity of RAC1 through its association with the oncogenic PARD6A-PRKCI complex in cancer cells, thereby acting to coordinately drive tumor cell proliferation and invasion. Also stimulates genotoxic stress-induced RHOB activity in breast cancer cells leading to their cell death.[UniProtKB/Swiss-Prot Function]