

## Product datasheet for **MG224168**

### Slc22a23 (NM\_001033167) Mouse Tagged ORF Clone

#### Product data:

Product Type:	Expression Plasmids
Product Name:	Slc22a23 (NM_001033167) Mouse Tagged ORF Clone
Tag:	TurboGFP
Symbol:	Slc22a23
Synonyms:	3110004L20Rik
Mammalian Cell Selection:	Neomycin
Vector:	pCMV6-AC-GFP (PS100010)
E. coli Selection:	Ampicillin (100 ug/mL)



[View online »](#)

ORF Nucleotide  
Sequence:

>MG224168 representing NM\_001033167  
 Red=Cloning site Blue=ORF Green=Tags(s)

TTTTGTAATACGACTCACTATAGGGCGGCCGGGAATTCGTCGACTGGATCCGGTACCGAGGAGATCTGCC  
 GCCGCGATCGCC

ATGGCGATAGACCGGCGCGTGTAGGCGGCGGTAGTGGTGCCGGGCGGCAGCCGGCCCCGGCGGAGGAGA  
 ACGGCTCCTGCCGCCCGGGACGCGGCGCCTCGGCGCCCTCGGAGGGCGCGCGGCTCCGGCAGCAG  
 CGCGGAGATCCAGCCACTGCCTGCGCTGCACCCAGCGGCGCCGCACTCGAGCTGCTGCGCGGCGACA  
 GCCGCCCGAGCCTCCTGTTGCTGGACTACGATGGCTCCGTGCTGCCCTTCTCGGGGCGCTGGCGGCG  
 GCTACCAGAAGACCCTGGTGGTGTCTCACCTGGATCCCGGCACTGTTTATTGGCTTCAGCCAGTTCTCGGA  
 CTCCTTCTTCTGGACCAGCCGATTTCTGGTGCCGCGGGGCGCAAAGGCACCGAGCTGGCGGGTGCC  
 ACTGTCACCGGCCGATGGGTGACATGGGCAATTGGACCAGCCCTCGGCCACCCCTTCTCCACTGCCT  
 CCTGGGGGACCACGAGCAACCGAAGCAACAGCAGCGACACACCACCCCTCCATCCCTCCAGGCAAGGG  
 GAACAACGACTCAAATTGCGACTGCCACGCGTGGGACTACGGCATCCGCACTGGTCTCATCAAAAACGTG  
 GTCAGCAAGTGGGATCTTGTGTGTGATAATACCTGGAAAGTCCATATCGCTAAGTTCTCCTTACTGGTTG  
 GATTAATCTTTGGCTACCTAATAACTGGATGCATTGCTGACTGGGTTGGCCGGCGCCTGTGCTGTGTT  
 TTCCACCATCTTCATCCTCATCTTTGGACTGACTGTGGCACTGTCAAGTGAATGTGACAATGTTTCAGCACA  
 CTCAGGTTCTTTGAAGGATTTTGGCTGGCTGGAATCATCCTCACCTTGTATGCATTACGAATAGAGCTAT  
 GCCCTCCAGGAAAACGGTTCATAATTACCATGGTGGCGAGCTTCGTGGCCATGGCGGGCCAGTTCCTCAT  
 GCCGGGCTGGCTGCGCTGTGCCGGACTGGCAGGTGTGAGGCCCTCATCATCTGTCCCTTCTGCTC  
 ATGCTGCTCTACTGGTCGATTTTCCCTGAGTCTCTCCGATGGCTAATGGTACCCAGCAATTTGAATCAG  
 CAAAGAAGTTGATCCTGTACCTTACTCAGAAGAACTGTGTGAGCCCTGAGAGTGATCAAGGGAGTGAT  
 GCCAGAGCTCGAGAAAGAGCTTTCACGGAGGCCCAAGAAGGTGTGCATCGTGAAGGTGGTGGGGACGAGG  
 AACCTGTGAAAAACATTGTGGTCTCTGTGTGAACTCGCTGACAGGGTACGGGATCCACCACTGCTTTG  
 CAAGAAGCATGATGGCCATGAAGTGAAGGTGCCGCTCCTGGAGAACTTCTACGCTGACTACTACACCAT  
 GGCCAGCATCGCACTGGCCTCCTGCCTAGCCATGTGTCTGGTAGTCAAGTTCTCGGGCGCAGGGGAGGG  
 CTGCTGCTCTTCATGATCCTCACTGCCCTGGCCTCACTTCTACAGCTCGGGCTTCTCACTTGTATCGGCA  
 AATACAGCCAGCATCCAGACTCAGAATTGCAGTGAAGTTGGCCGTAGGGATGAGTGACAGCGTCAAGGA  
 CAAGTTCTCCATTGCGTTTTTCCATCGTGGGAATGTTTGCATCCCATGCGGTGGGGAGCCTCAGTGTCTT  
 TTCTGTGCAGAGATCACTCCACAGTGATAAGGTGTGGTGGGCTCGGGCTGGTGTGCGCCAGTGCAGGTT  
 TTGGCATGCTGACAGCGCCATTATTGAGCTGCACAACCAAAAAGGCTACTTCTGCACCATATCATCTT  
 CGCCTGTGACAGCTCATCTGCATCATTGTCATCCTCCTGCTTCTGAGAGCAGGAACCAGAACCTGCCT  
 GAGAATATCGCCAACGGGGAACACTACACACGGCAACCGTGTGCCACACAAGAAGGGAGAGCAGCCCT  
 TGCTGCTACCAACGCGGAGCTCAAGGACTACTCGGGCCTGCATGACGTGGCTGCAGTGGGTGACGGGCT  
 GCCAGAGGGGGCCACTGCCAATGGCATGAAGACTATG

AGCGGACCGACGCGTACGCGGCCGCTCGAG - GFP Tag - GTTTAA

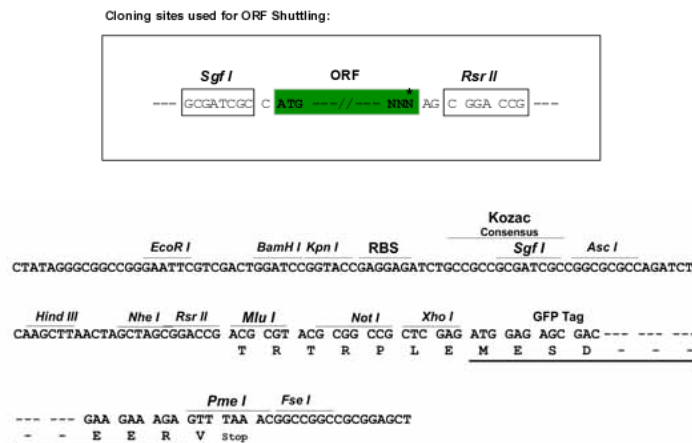
**Protein Sequence:** >MG224168 representing NM\_001033167  
 Red=Cloning site Green=Tags(s)

MAIDRRREAAGSGAGRQPAPAEENGLPPGDAASAPLGGRAGSGSSAEIQPLPALHPSSGGPHSSCCAAT  
 AAPSLLLLDYDGSVLPFLGGLGGYQKTLVVL TWIPALFIGFSQFSDSFLLDQPDFWCRGAGKGTLAGA  
 TVTGRWGDMDGNWTPSATPFSTASWGTTSNRSNSSDTPPLPSPPGKGNNSNCDCHAWDYGIRTGLIQNV  
 VSKWDLVCDNTWKVHIAKFSLLVGLIFGYLITGCIADWVGRRPVLLFSTIFILIFGLTVALSVNVTMFST  
 LRFEGFCLAGIILTLYALRIELCPPGKRFIITMVASFVAMAGQFLMPGLAALCRDWQVLQALIICPFL  
 MLLYWSIFPESLRWLMATQQFESAKKLILYL TQKNCVSPESDIKGVMEPELEKELSRPKKVCIVKVVGTR  
 NLWKNIVVLCVNSLTGYGIHHCFAFSMMGHEVKVPLENFYADYYTMSIALASCLAMCLVVKFLGRRGG  
 LLLFMILTALASLLQLGLLNLIGKYSQHPDSELQKLA VGMDSVSKDKFSIAFSIVGMFASHAVGSLSVF  
 FCAEITPTVIRCGLGLVLASAGFGMLTAPIIELHNQKGYFLHHIIFACCTLICICILLLPESRNQNL  
 ENIANGHEHYTRQPLLPKHKGEQPLLLTNAELKDYSGLHDVAAVGDGLPEGATANGMKT

SGP TRRRLE - GFP Tag - V

**Restriction Sites:** SgfI-RsrII

**Cloning Scheme:**



**ACCN:** NM\_001033167

**ORF Size:** 2067 bp

**OTI Disclaimer:** The molecular sequence of this clone aligns with the gene accession number as a point of reference only. However, individual transcript sequences of the same gene can differ through naturally occurring variations (e.g. polymorphisms), each with its own valid existence. This clone is substantially in agreement with the reference, but a complete review of all prevailing variants is recommended prior to use. [More info](#)

**OTI Annotation:** This clone was engineered to express the complete ORF with an expression tag. Expression varies depending on the nature of the gene.

**Components:** The ORF clone is ion-exchange column purified and shipped in a 2D barcoded Matrix tube containing 10ug of transfection-ready, dried plasmid DNA (reconstitute with 100 ul of water).

**Reconstitution Method:**

1. Centrifuge at 5,000xg for 5min.
2. Carefully open the tube and add 100ul of sterile water to dissolve the DNA.
3. Close the tube and incubate for 10 minutes at room temperature.
4. Briefly vortex the tube and then do a quick spin (less than 5000xg) to concentrate the liquid at the bottom.
5. Store the suspended plasmid at -20°C. The DNA is stable for at least one year from date of shipping when stored at -20°C.

**RefSeq:** [NM\\_001033167.3](#), [NP\\_001028339.1](#)

**RefSeq Size:** 6251 bp

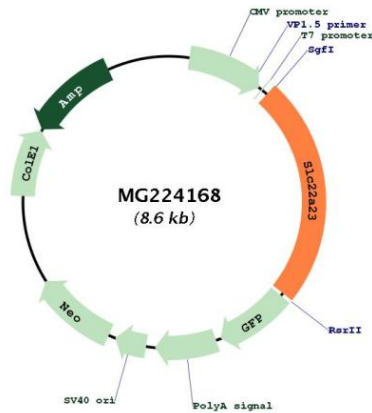
**RefSeq ORF:** 2070 bp

**Locus ID:** 73102

**UniProt ID:** [Q3UHH2](#)

**Cytogenetics:** 13 A3.3

**Product images:**



Circular map for MG224168