

## Product datasheet for **MG224159**

### **Tcf12 (NM\_011544) Mouse Tagged ORF Clone**

#### **Product data:**

Product Type:	Expression Plasmids
Product Name:	Tcf12 (NM_011544) Mouse Tagged ORF Clone
Tag:	TurboGFP
Symbol:	Tcf12
Synonyms:	A130037E08Rik; ALF1; bHLHb20; HEB; HEBAIt; HTF-4; HTF4; ME1; REB
Mammalian Cell Selection:	Neomycin
Vector:	pCMV6-AC-GFP (PS100010)
E. coli Selection:	Ampicillin (100 ug/mL)



[View online »](#)

**ORF Nucleotide Sequence:**

>MG224159 representing NM\_011544  
 Red=Cloning site Blue=ORF Green=Tags(s)

TTTTGTAATACGACTCACTATAGGGCGGCCGGGAATTCGTCGACTGGATCCGGTACCGAGGAGATCTGCC  
 GCC**CGGATCGCC**

ATGAATCCCAGCAGCAGCGCATGGCCGATAGGGACCGACAAGGAGCTGAGCGACCTGCTGGACTTCA  
 GTGCGATGTTTTCTCCACCTGTTAATAGTGGGAAAACGAGACCAACAACACTGGGAAGTAGTCAGTTCAG  
 CGGGTCAGGTATGGATGAGCGTGGAGGAACAACATCTTGGGGAACAAGTGGTCAACCAAGCCCCTCTAT  
 GATTCTACTAGAGGTTTTACAGACAGCCCTCATTACAGTGATCACTTGAATGACAGTCGATTAGGAACCC  
 ACGAAGGCTTGTCCCAACACCTTTTCATGAACTCAAATCTGATAGGGAAAACATCAGAGAGAGGCTCATT  
 TTCCCTGTACAGCAGAGACTCTGGACTCTCAGGCTGTCAGTCTAGTCTCCTGAGACAAGATCTAGGACTT  
 GGGAGCCCGGCACAGCTGTCTTCTTCAGAAAGCCTGGAACACCATACTACTCATTCTCTGCCACAAGTT  
 CGAGAAGAAGACCGCTCCATGATTCTGTAGCCCTAGATCCTTTACAAGCGAAGAAAAGTAAAGAAAGTGCC  
 TCCTGGCTACCTTCTTCTGTATATGCACCATCCCAAAATCTGACGATTTCAACCGTGAATCTCCTAGT  
 TACCCATCTCCAAGCCCAACCAAGTATGTTCCGCTAGCACTTTCTTTATGCAAGATGGGACCCACAGTT  
 CTCTGACCTTTGGAGTTCATCGAATGGGATGAGCCAGCCTGGTTTTGGTGGAAATCTGGGGACCTCCAC  
 ATCCCACATGTCTCAGTCCAGTAGTTATGGCAGCCTTCATTACATGACCCTTGAGTTATCCTCCACAC  
 TCAGTGTACCAACAGACATAAACACAAGTCTTCCGCAATGTCCAGCTTCCACCGTGGTAGTACCAGCA  
 GCTCACCATATGTTGCCGCTCACATACTCCTCCCATCAATGGATCAGATAGCATCTTAGGAACAGAGG  
 GAATGTGCTGGAAGCTCACAGACGGGTGATGCACTTGGGAAGGCCTTGGCATCTATTTATCCCTGAC  
 CACACAAGCAGTAGTTTTCCATCAAACCCATCAACACCAGTGGGATCTCCTTACCTCTCACAGGTACCA  
 GTCAGTGGCCCAGAGCTGGAGGGCAAGCTCCTTCATCTCAAGCTATGAAAACACTCACTCCCTGAA  
 AAATCGAGTTGAGCAGCAACTTCACGAGCATTTGCAAGATGCAATGTCTTCTTAAAGGATGTCTGTGAG  
 CAGTCTCGAATGGAAGACCGCTTAGACAGGCTGGATGATGCTATCCATGTGCTACGAAACCATGCAGTTG  
 GACCTTCTACCAGTCTGCCTACTAGCCACAGTGACATACACAGTTTGTGGGACCATCCCAATGCATC  
 AATTGGAAACCTCAATTCAAACTATGGAGGATCCAGCCTTGTACAAATAGTCGATCAGCTTCGATGGTC  
 GGAACACATCGGGAAGATTCAGTCAGTCTCAATGGCAATCATTCCGGTCTGTCTAGTACTGTTGCTGCCT  
 CAAACACAGAACTGAACCATAAAACACCAGAAAATTTTCAGAGGTGGTGTACAAAATCAGTCTGGAAGTGT  
 TGTTCCAACAGAAATCAAGACTGAAAACAAAGAAAAGATGAAAACCTTCATGAACCTCCTTCATCAGAT  
 GACATGAAATCAGATGATGAGTCTCCAGAAAGACATCAAGGTCTCATCTAGGGGCAGAACCAAGCAGTA  
 CCAATGAAGACGAGGATCTGAATCCAGAACAGAAAATCGAAAGGAGAAGGAAAGCGGATGGCTAACAA  
 TGCCAGAGAGCGCTGCGGTGCGGGATATTAACGAGGCGTTCAAGGAGCTTGGCCGAATGTGTCAGCTT  
 CATTTGAAGAGTAAAAACCTCAGACAAAACCTTCTCATTCTTCATCAGGCCGTGGCAGTCATCCTTAGTC  
 TAGAACAGCAAGTGAAGAGAGGAAACCTCAACCCCAAAGCAGCCTGCCTTAAGAGAAGAGAAGAAGAAA  
 AGTCTCTGCTGCGTCAGCAGAGCCGCCAACACGTTGCCAGGAGCCATCCTGGGCTTAGTGAGTCTACC  
 AACCTATGGGTCATCTG

**ACGCGT**ACGCGGCCGCTCGAG - GFP Tag - GTTTAA

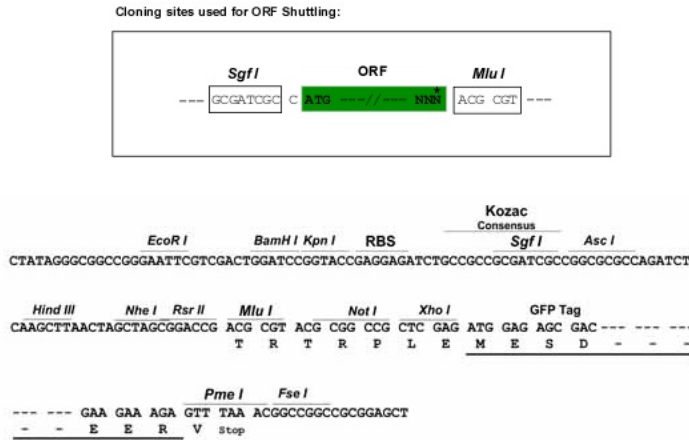
Protein Sequence: >MG224159 representing NM\_011544  
 Red=Cloning site Green=Tags(s)

MNPQQQRMAAIGTDKELSDLLDFSAMFSPVNSGKTRPTTLGSSQFSGSGMDERGGTTSWGTSGQPSPSY  
 DSSRGFTDSPHYSDHLNDSRLGTHEGLSPTPFMNSNLIGKTSERGSFSLYSRDSGLSGCQSSLLRQDLGL  
 GSPAQLSSSGKPGTPYYSFATSSRRRPLHDSVALDPLQAKKVRKVPPGLPSSVYAPSPNSDDFNRES  
 YPSPKPPTSMFASTFFMQDGTSSDLWSSNMGMSQPGFGGILGTSTSHMSQSSSYGSLHSHDRLSYPPH  
 SVSPTDINTSLPPMSSFHRGSTSSSPYVAASHTPPINGSDSILGTRGNAAGSSQTGDALGKALASIYSPD  
 HTSSSFSPNPSTVPVGSPLTGTSTQWPRAAGQAPSSPYENSLHSLKNRVEQQLHEHLQDAMSFLKDVCE  
 QSRMEDRLDRLDDAIHVLNRHAVGPSTSLPTSHSDIHSLLGPHNASIGNLNSNYGGSSLVNRSASMV  
 GTHREDSVSLNGNHSVLSSTVAASNTLNHKTPEFRGGVQNGSGSVVPTIKTENKEKDENLHEPPSSD  
 DMKSDDESSQDKIKVSSRGTSTNEDEDLNPEQKIEREKERRMANNARERLRVRDINEAFKELGRMCQL  
 HLKSEKQPQTKLLILHQAVALVILSLEQQVRERNLNPKAACLRREEEKVSAASAEPNTPGAHPGLSEST  
 NPMGHL

TRTRPLE - GFP Tag - V

Restriction Sites: SgfI-MluI

Cloning Scheme:

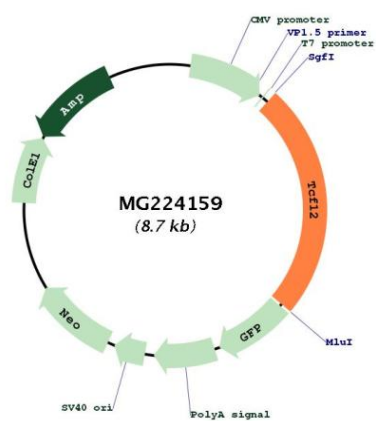


ACCN: NM\_011544

ORF Size: 2118 bp

<b>OTI Disclaimer:</b>	<p>Due to the inherent nature of this plasmid, standard methods to replicate additional amounts of DNA in E. coli are highly likely to result in mutations and/or rearrangements. Therefore, OriGene does not guarantee the capability to replicate this plasmid DNA. Additional amounts of DNA can be purchased from OriGene with batch-specific, full-sequence verification at a reduced cost. Please contact our customer care team at <a href="mailto:custsupport@origene.com">custsupport@origene.com</a> or by calling 301.340.3188 option 3 for pricing and delivery.</p> <p>The molecular sequence of this clone aligns with the gene accession number as a point of reference only. However, individual transcript sequences of the same gene can differ through naturally occurring variations (e.g. polymorphisms), each with its own valid existence. This clone is substantially in agreement with the reference, but a complete review of all prevailing variants is recommended prior to use. <a href="#">More info</a></p>
<b>OTI Annotation:</b>	This clone was engineered to express the complete ORF with an expression tag. Expression varies depending on the nature of the gene.
<b>Components:</b>	The ORF clone is ion-exchange column purified and shipped in a 2D barcoded Matrix tube containing 10ug of transfection-ready, dried plasmid DNA (reconstitute with 100 ul of water).
<b>Reconstitution Method:</b>	<ol style="list-style-type: none"> <li>1. Centrifuge at 5,000xg for 5min.</li> <li>2. Carefully open the tube and add 100ul of sterile water to dissolve the DNA.</li> <li>3. Close the tube and incubate for 10 minutes at room temperature.</li> <li>4. Briefly vortex the tube and then do a quick spin (less than 5000xg) to concentrate the liquid at the bottom.</li> <li>5. Store the suspended plasmid at -20°C. The DNA is stable for at least one year from date of shipping when stored at -20°C.</li> </ol>
<b>RefSeq:</b>	<a href="#">NM_011544.3</a> , <a href="#">NP_035674.2</a>
<b>RefSeq Size:</b>	4707 bp
<b>RefSeq ORF:</b>	2121 bp
<b>Locus ID:</b>	21406
<b>UniProt ID:</b>	<a href="#">Q61286</a>
<b>Cytogenetics:</b>	9 39.85 cM
<b>Gene Summary:</b>	Transcriptional regulator. Involved in the initiation of neuronal differentiation. Activates transcription by binding to the E box (5'-CANNTG-3').[UniProtKB/Swiss-Prot Function]

## Product images:



Circular map for MG224159