

Product datasheet for **MG224153**

Rras (NM_009101) Mouse Tagged ORF Clone

Product data:

Product Type:	Expression Plasmids
Product Name:	Rras (NM_009101) Mouse Tagged ORF Clone
Tag:	TurboGFP
Symbol:	Rras
Synonyms:	A1573426
Mammalian Cell Selection:	Neomycin
Vector:	pCMV6-AC-GFP (PS100010)
E. coli Selection:	Ampicillin (100 ug/mL)
ORF Nucleotide Sequence:	>MG224153 representing NM_009101 Red=Cloning site Blue=ORF Green=Tags(s)

TTTTGTAATACGACTCACTATAGGGCGGCCGGAATTCGTCGACTGGATCCGGTACCGAGGAGATCTGCC
GCC**CGATCGCC**

ATGAGCAGCGGGCGGCGTCCGGGACTGGGCGGGGGCGGCCCGGGGCGGGGGCCGGGACCCAGGGACC
CCCCGCCCGGCGAGACTCACAAGCTGGTGGTCGTAGGCGGCGGCGGCGTGGGCAAGAGCGCGTGACCAT
CCAGTTCATCCAGTCCTACTTTGTGTCTGACTATGATCCCACATTGAAGATTCCTACACAAAGATCTGC
ACTGTGGACGGCATCCCTGCACGGCTGGACATCCTGGACTGCGGGCAAGAGGAATTTGGTGCCATGC
GGGAGCAGTACATGCGTGTGGCAACGGCTTCTGCTGGTGTGGCCATTAAACGACAGGCAGAGTTTCAA
TGAGGTGGCAAGCTCTTACACAGATCCTCAGAGTCAAGGACCGGGATGATTTCCCATTTGTGTTGGTT
GGGAACAAGGCAGATCTGAGAACCAGCGCCAGGTCTCCGGTCTGAAGCCTCCTTTTCAGTGCTCCC
ACCATGACTTACTTTGAGGCTCAGCCAAACTGCGTCTGAATGTGATGAGGCATTTGAGCAGCTGGT
GCGCGTGTCCGAAATACCAGGAACAAGAACTCCCTCCTAGCCACCTAGTGCTCCAGGAAGAAGGAT
GGAGGATGTCCCTGTGTCTGCTG

ACGCGTACGCGGCCGCTCGAG - GFP Tag - GTTTAA



[View online »](#)

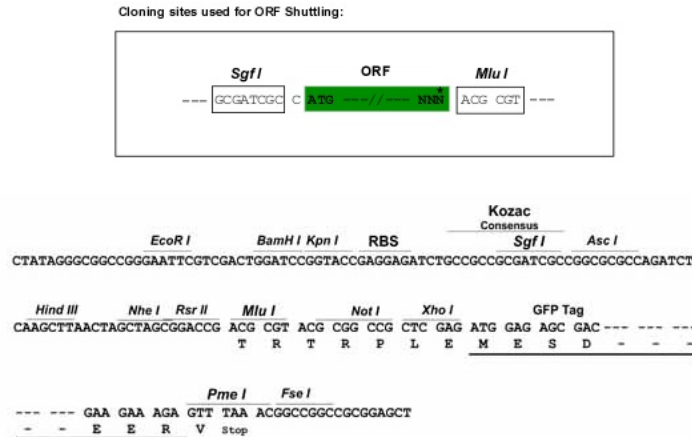
Protein Sequence: >MG224153 representing NM_009101
 Red=Cloning site Green=Tags(s)

MSSGAASGTGRGRPRGGGPGPRDPPPGETHKLVVVGGGVGSALTIQFIQSYFVSDYDPTIEDSYTKIC
 TVDGIPARLDILDTAGQEEFGAMREQYMRAGNGFLLVFAINDRQSFNEVGKLFQTQLRVKDRDDFPVILV
 GNKADLENQRQVLRSEASSFSASHHMTYFEASAKLRLNVDEAFEQLVRAVRKYQEQLPPSPSPAPRKKD
 GGCPVLL

TRTRPLE - GFP Tag - V

Restriction Sites: SgfI-MluI

Cloning Scheme:



ACCN: NM_009101

ORF Size: 654 bp

OTI Disclaimer: The molecular sequence of this clone aligns with the gene accession number as a point of reference only. However, individual transcript sequences of the same gene can differ through naturally occurring variations (e.g. polymorphisms), each with its own valid existence. This clone is substantially in agreement with the reference, but a complete review of all prevailing variants is recommended prior to use. [More info](#)

OTI Annotation: This clone was engineered to express the complete ORF with an expression tag. Expression varies depending on the nature of the gene.

Components: The ORF clone is ion-exchange column purified and shipped in a 2D barcoded Matrix tube containing 10ug of transfection-ready, dried plasmid DNA (reconstitute with 100 ul of water).

Reconstitution Method:

1. Centrifuge at 5,000xg for 5min.
2. Carefully open the tube and add 100ul of sterile water to dissolve the DNA.
3. Close the tube and incubate for 10 minutes at room temperature.
4. Briefly vortex the tube and then do a quick spin (less than 5000xg) to concentrate the liquid at the bottom.
5. Store the suspended plasmid at -20°C. The DNA is stable for at least one year from date of shipping when stored at -20°C.

RefSeq: [NM_009101.3](#)

RefSeq Size: 946 bp

RefSeq ORF: 657 bp

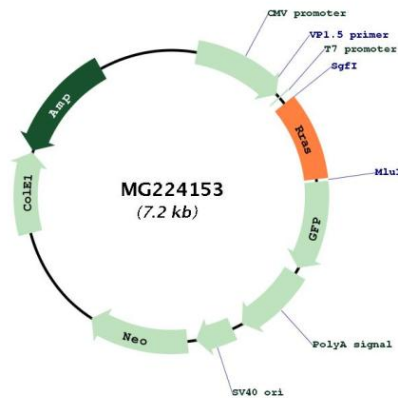
Locus ID: 20130

UniProt ID: [P10833](#)

Cytogenetics: 7 29.08 cM

Gene Summary: Regulates the organization of the actin cytoskeleton. With OSPBL3, modulates integrin beta-1 (ITGB1) activity.[UniProtKB/Swiss-Prot Function]

Product images:



Circular map for MG224153