

Product datasheet for **MG224150**

Ppil1 (NM_026845) Mouse Tagged ORF Clone

Product data:

Product Type: Expression Plasmids
Product Name: Ppil1 (NM_026845) Mouse Tagged ORF Clone
Tag: TurboGFP
Symbol: Ppil1
Synonyms: 1110060O10Rik; AI327391; Cyp11
Mammalian Cell Selection: Neomycin
Vector: pCMV6-AC-GFP (PS100010)
E. coli Selection: Ampicillin (100 ug/mL)
ORF Nucleotide Sequence: >MG224150 representing NM_026845
 Red=Cloning site Blue=ORF Green=Tags(s)

TTTTGTAATACGACTCACTATAGGGCGCCGGGAATTCGTCGACTGGATCCGGTACCGAGGAGATCTGCC
 GCC**CGATCGCC**

ATGGCGGCGATTCCCCAGACACCTGGCAGCCGCCAACGTCTACCTGGAGACTAGCATGGGAGTCATTG
 TCCTGGAGCTATACTGGAAGCATGCGCCCAAGACCTGCAAGAACTTCGCGGAGCTGGCTCGGCGGGGCTA
 CTACAATGGCACCAAGTCCACAGGATCATCAAGGACTTCATGATCCAAGGCGGCGACCCGACAGGCACA
 GGTCGAGGTGGCGCATCTATTTATGGCAAACAGTTTGAAGATGAGCTTCATCCAGACCTGAAGTTCCTG
 GGGCTGGGATTCTCGCCATGGCCAACGCAGGACCAGACCAATGGCAGCCAGTTCTTTGTGACCCTGGC
 CCCACGCAATGGCTGGACGGCAAGCATACTATTTTTGGCCGAGTGTGCCAGGGTATAGGGATGGTGAAT
 CGAGTGGGCATGGTGAAACAACTCCCAGGACCGTCCTGTGGACGACGTGAAGATTCTTAAGGCGTACC
 CCTCTGGA

ACGCGTACGCGGCCGCTCGAG - GFP Tag - GTTTAA

Protein Sequence: >MG224150 representing NM_026845
 Red=Cloning site Green=Tags(s)

MAAIPPDWQPPNVYLETSMGVIVLELYWKHAPKTCKNFAELARRGYNGTKFHRIIKDFMIQGGDPTGT
 GRGGASIYGKQFEDELHPDLKFTGAGILAMANAGPDTNGSQFFVTLAPTQWLDGKHTIFGRVCQIGIMVN
 RVGMVETNSQDRPVDDVKILKAYPSG

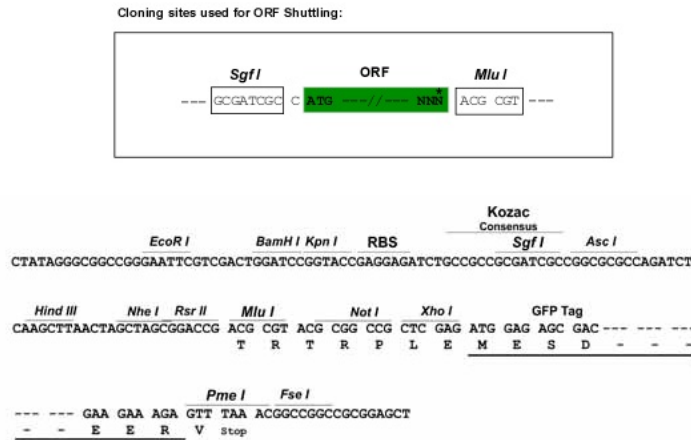
TRTRPLE - GFP Tag - V

Restriction Sites: Sgfl-MluI

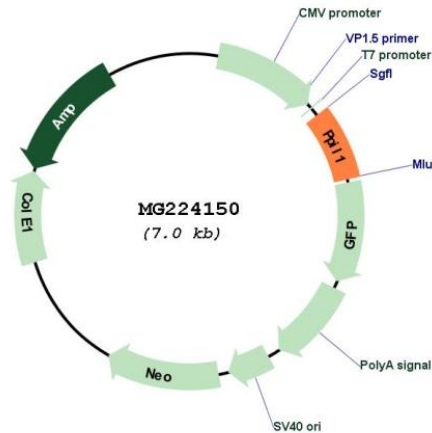


[View online »](#)

Cloning Scheme:



Plasmid Map:



ACCN: NM_026845

ORF Size: 498 bp

OTI Disclaimer: The molecular sequence of this clone aligns with the gene accession number as a point of reference only. However, individual transcript sequences of the same gene can differ through naturally occurring variations (e.g. polymorphisms), each with its own valid existence. This clone is substantially in agreement with the reference, but a complete review of all prevailing variants is recommended prior to use. [More info](#)

OTI Annotation: This clone was engineered to express the complete ORF with an expression tag. Expression varies depending on the nature of the gene.

Components:	The ORF clone is ion-exchange column purified and shipped in a 2D barcoded Matrix tube containing 10ug of transfection-ready, dried plasmid DNA (reconstitute with 100 ul of water).
Reconstitution Method:	<ol style="list-style-type: none">1. Centrifuge at 5,000xg for 5min.2. Carefully open the tube and add 100ul of sterile water to dissolve the DNA.3. Close the tube and incubate for 10 minutes at room temperature.4. Briefly vortex the tube and then do a quick spin (less than 5000xg) to concentrate the liquid at the bottom.5. Store the suspended plasmid at -20°C. The DNA is stable for at least one year from date of shipping when stored at -20°C.
RefSeq:	<u>NM_026845.4</u> , <u>NP_081121.1</u>
RefSeq Size:	1215 bp
RefSeq ORF:	501 bp
Locus ID:	68816
UniProt ID:	<u>Q9D0W5</u>
Cytogenetics:	17 A3.3
Gene Summary:	Involved in pre-mRNA splicing as component of the spliceosome. PPIases accelerate the folding of proteins. It catalyzes the cis-trans isomerization of proline imidic peptide bonds in oligopeptides.[UniProtKB/Swiss-Prot Function]