

Product datasheet for **MG224140**

Sohlh2 (NM_028937) Mouse Tagged ORF Clone

Product data:

Product Type:	Expression Plasmids
Product Name:	Sohlh2 (NM_028937) Mouse Tagged ORF Clone
Tag:	TurboGFP
Symbol:	Sohlh2
Synonyms:	4933406N12Rik; AI413378; Sosf2
Mammalian Cell Selection:	Neomycin
Vector:	pCMV6-AC-GFP (PS100010)
E. coli Selection:	Ampicillin (100 ug/mL)



[View online »](#)

ORF Nucleotide Sequence:

>MG224140 representing NM_028937
 Red=Cloning site Blue=ORF Green=Tags(s)

TTTTGTAATACGACTCACTATAGGGCGGCCGGAATTCGTCGACTGGATCCGGTACCGAGGAGATCTGCC
 GCC**CGGATCGCC**

ATGGCCGACCGGATCAGCACTGGGAGCTAGGCCGGAGGCTGGGCAGGGCAGAGTAAATCTTTTGCTGG
 TTGGAGATGCCACAAGATACTTCTGGCTGGCTCTATGCAGAAATCTTTCTAGCACAGCACAGATCAC
 CCTGACCATCAGCAATGTGAAGAAGGTCGCCGTGCTTTTGGCTGCTAACTCGTTTGACATAATTTCTTG
 AAGGTGACTTCCACTCTAACTGCAGAGGAGCAGGAGGCTGCCAAGTTAATTAGATCTGGCAAGAAGAAA
 ACACACATTTGCTGTTTCTTTGTAATACCTGAAAGACTTAAAGGCTATGTTTCAGAATATGGAGCTGA
 CATTAGTTTCAGTGAGCCGCTGACCTTGGAAAAAGTGAACACGGTGATACACTACTGGAAAAAGTATTTT
 ACAATAACGGATATGGAAAACTGAGTTGCCTCCAGAATGCCGGCTGTACTTTCAGACGTCCTCCGAGTG
 AACTCGGAGGGCGTTTTTCTACAGATATGTTTCTTTGCTCTGAAGTCTGAAGAATGACGCTAGACTTGG
 ATTAAAGGCCCGTTTGTGAGTCTAGACAAAAGCAAACAGGCGTCTTTTCTTCACTCAACCAAAGAAAAG
 CTGAGACGAGAACGCATCAAGTCTTGTGTGAGCAGCTGCGCACGCTCCTGCCATACGTCAAGGGGAGGA
 AGAGCGATGTGGCATCAGTTATCGAGGCCACAGTTGATTATGTGAAGCAGGTCCGGGAGTCTCTCTCTCC
 AGCCATTATGGCCAGGTTACAGAAGCCATTGAGAAACAATAGAAGGTTTTCTAAGAGACAGATGCCCATC
 GAGCTGTTCTTCCATTCTCAGCCACATCAGAGGGAAGATGCCATGCTGACCAGCGCTTCTCACCTG
 TGCAAGAGATTGAGTCTGGCTGATCGGGGCTGAACGTGTATTCCATGACTGCTGCAGGAGGAGCTTT
 GGAGGGAGCAGTGAGAGGTCAGCCAGGCTCTGTTCCGAGAGCTCTATTGAGGATCTGTATAAGACTCGC
 GTCCCCAGCACAGCCGATCTCTGAATTCCTTCCACTCTGTCAAATACACTTCTGGAAGTGTCTCTCCCC
 ATGAGGCAGCTGCCAGGACAAATCAGAACATTTCCACTTATTTGCCACCCACTGCACCCAGTGTGTCCAA
 CTTTATTCTCAGCACTGCAATGCCATGCTTTGCCAGCAGCCCAACCGTCCCAACTGCCTGTGCACT
 CCGGGCCATGAGCTTGCAGCCAGTTCTCGCGCTGCCTCAGCCAGCATCTTTCGTGGATTCCGTGGCGCT
 CAGCTTCGGATACCAGGCTCTCAGCCACCTGCTCTGCCATCTCCACAGCCTCAGACAGTAGTACTT
 T

ACGCGTACGCGGCCGCTCGAG - GFP Tag - GTTTAA

Protein Sequence:

>MG224140 representing NM_028937
 Red=Cloning site Green=Tags(s)

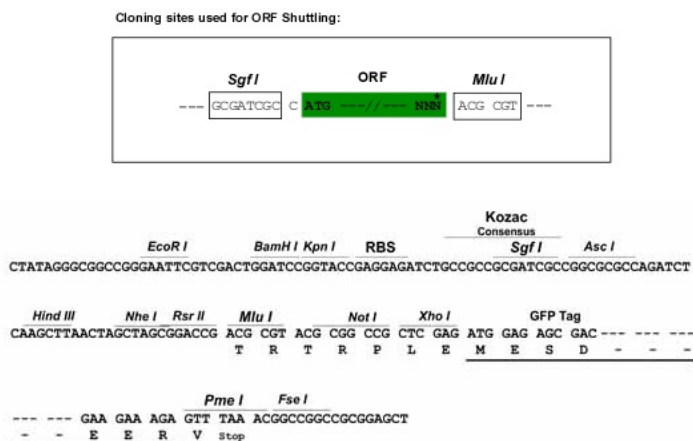
MADRISTGELGRRPGQGRVNLVVGDATRYFLAGSMQKFFPSTAQITLTISNVKKVAVLLAANSFDIIFL
 KVTSTLTAEQEAAKLIRSGKKKNTLLFAFVIPERLKGYSYEGADISFSEPLTLEKVNTVIHYWKTYF
 TNTDMENELPPECRLYFQTSRSELGGRFSTDMFLCSELLKNDARLGLKAPLSSLDKSKQASFLHSTKEK
 LRRERIKSCCEQLRLLPYVKGRKSDVASVIEATVDYVKQVRESLSPAIMAQVTEAIQNNRRF SKRQMPI
 ELFLPFSATSQREDAMLTSAFSPVQEIQLLADRGLNVYSMTAAGGALEGAVRGQPGSVSESSIEDLYKTR
 VPSTARSLNSFHSVKYTSVTPSPHEAAARTNQINISTYLPPTAPSVSNFIPQHCNAMLCPARPTSPNCLCT
 PGHELAASSRAASASIFRGFRAASASDHQASQPPALPSPQPHDSSYF

TRTRPLE - GFP Tag - V

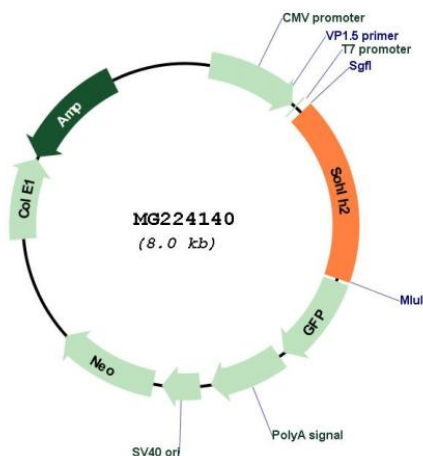
Restriction Sites:

Sgfl-MluI

Cloning Scheme:



Plasmid Map:



ACCN: NM_028937

ORF Size: 1401 bp

OTI Disclaimer: The molecular sequence of this clone aligns with the gene accession number as a point of reference only. However, individual transcript sequences of the same gene can differ through naturally occurring variations (e.g. polymorphisms), each with its own valid existence. This clone is substantially in agreement with the reference, but a complete review of all prevailing variants is recommended prior to use. [More info](#)

OTI Annotation: This clone was engineered to express the complete ORF with an expression tag. Expression varies depending on the nature of the gene.

Components: The ORF clone is ion-exchange column purified and shipped in a 2D barcoded Matrix tube containing 10ug of transfection-ready, dried plasmid DNA (reconstitute with 100 ul of water).

Reconstitution Method:

1. Centrifuge at 5,000xg for 5min.
2. Carefully open the tube and add 100ul of sterile water to dissolve the DNA.
3. Close the tube and incubate for 10 minutes at room temperature.
4. Briefly vortex the tube and then do a quick spin (less than 5000xg) to concentrate the liquid at the bottom.
5. Store the suspended plasmid at -20°C. The DNA is stable for at least one year from date of shipping when stored at -20°C.

RefSeq: [NM_028937.3](#), [NP_083213.2](#)

RefSeq Size: 2351 bp

RefSeq ORF: 1404 bp

Locus ID: 74434

UniProt ID: [Q9D489](#)

Cytogenetics: 3 C

Gene Summary: Transcription regulator of both male and female germline differentiation. Suppresses genes involved in spermatogonial stem cells maintenance, and induces genes important for spermatogonial differentiation (PubMed:22056784). Coordinates oocyte differentiation without affecting meiosis I (PubMed:28504655).[UniProtKB/Swiss-Prot Function]