

Product datasheet for **MG224127**

Peg3 (NM_008817) Mouse Tagged ORF Clone

Product data:

Product Type:	Expression Plasmids
Product Name:	Peg3 (NM_008817) Mouse Tagged ORF Clone
Tag:	TurboGFP
Symbol:	Peg3
Synonyms:	AL022617; ASF-1; End4; Gcap4; mKIAA0287; Pw1; Zfp102
Mammalian Cell Selection:	Neomycin
Vector:	pCMV6-AC-GFP (PS100010)
E. coli Selection:	Ampicillin (100 ug/mL)
ORF Nucleotide Sequence:	>MG224127 representing NM_008817, codon optimized . Due to the complexity of NM_008817, the ORF clone is codon optimized for mammalian Expression. The nucleotide sequence differs from the reference sequence, yet the amino acid sequence remains identical.

Red=Cloning site Blue=ORF Green=Tags(s)

TTTTGTAATACGACTCACTATAGGGCGGCCGGAATTCGTCGACTGGATCCGGTACCGAGGAGATCTGCC
GCC**CGATCGCC**

ATGTACCACCACGAAGACGATACCAATTCAGACATGAACTCAGATGACGACATGAGTCGCAGCGGCAGGG
AAACTCCCCCTCCAAGGCCATCTCATGCTTTCCGGTCCGAGCGCGACCTGGAAAGCGCGGTCCGGTCCAG
AGACGTGGAGCCAAGAGACAGATGGCCGTATACACGGAACCCCGCTCTAGATTGCCCAAAGGGACCTG
AGCCTGCCGTGATGAGTCGGCCACACTTTGGTCTGGACCGCATGACGATCGCAGGTCAATGGACTATG
AGTCACGGTCACAAGACGCGGAGAGCTACCAGAATGTGGTCGAGCTGAAAGAGGATAAAAAGCCCCAGAA
CCCCATTCAGGACAATTTGGAGAATACCGCAAGCTCCTGAGCCTGGGGTTTCAGCTGGCGGAGGACGAC
CGACTCCACATGACGACGGGCACTCAAGTCGGAGTAAGCGCACCGCTTACCCTAGTACTAGTAGGG
GCCTGAAGCCAATGCCAGAAGCCAAGAAGCCAGTCACCGCGAGGAATTTGCGAGGACGAAAGTTCTCA
CGCGTTATTATGAAAAATTTATTAAGGATGTGGCTAGAAACCCCAAGAGTGGTCGAGCCCGGGAGCTG
AACGAACGCCCTCCACCTCGGTTCCCCAGACCGAACGACAACCTGGAAGGACAGCAGTTTCTCACGCCGCG
AGAGTGTCAATCAGGAGAGAGGATATGAAGGCAGCGCTTCCGCGCGGGTTCAGATTTAACCGCGACTT
GGCAAGCCGGAGCCGGGCACTCGAAAGAAAGCGGCGCTACCATTTTGACTCTGACGAAAGGGGTTCCGGA
CACGAGACAAGAGTTGTGTTGAAAGAAGCCTTTCGAGTGTGGAGCTGAAATGCGGCAGGCCATGTCTA
TGGCAACTTGAATTCACCCAGCTTCTCCGAGAGCCAATCCATAGATTTGGGGTAACCCCTATGTGTG
CGACGAATGTGGCCGCAATTCAGTGATTTCCGAATTCGTAGAGCATCAAATATGCACACCAGGGAG
AACCTGTATGAATATGGTGAGAGTTTTATCCACTCAGTAGCAGTCAATGAAGTGCAGAAGGCCAAGGAG



[View online »](#)

GAGGCAAGCGCTTTGAATGTAAGAGTGCGGGGAAACATTTTCTAGGAGTGCCGCCCTGGCAGAGCACCG
 CCAGATTCACGCTAGAGAGTACCTGGCCGAATGCAGGGACCAAGAAGACGAGGAGACTATTATGCCAAGC
 CCCACCTTCTCAGAGCTCCAAAAGATGTATGGGAAGGACAAGTTTTACGAGTGTAAGGTATGCAAGGAGA
 CGTTTTCTCACAGCTCAGCCCTCATCGAGCACAAAAATCCATGGCCGAGGCAACAGCGATGATAGAGA
 CAACGAGCGCGAGAGAGAGAGATAGGCTCCGCGCCAGAGCCCGCGAGCAGAGGGAGAGAGAAAGGGAG
 CGAGAAAGGGAGCGGAGCTGGGGGAGCCCTTCTGACGTGCCAAACTTTAACGAGTTTAGGAAAATGT
 ATCGCAAAGACAAAATTTACGAATGCAAAGTCTGTGGAGAGTCCTTTCTGCATCTGAGCTCCCTCAGGGA
 ACATCAGAAAATCCACACCAGAGGAAATCCGTTGAAAAACAAATCACGCATGTGCCAGGAAACCTTTGTC
 CCGAGCCAATCCCTTCGGCGAAGACAAAAGACCTACCGGAAAAAGCTGTTTGACTTCAATAACGCAAGAG
 ATGCTCTGATGGGAAATCTGATTATCAGAACACCAGAAAAATCGTCCCGCCGGAACCTTTTTCGAGGG
 GCGAGGGTTGAGAAAGCCCTTTGTAGAAAGTCAGAAATCTCATACCATCACCCGCCCTCTGAGAAATAAG
 GACGACGACAAGCCGTTTACCATCAGCGTGAACCCAAATGATAAGCTTAAGTTTCTATCATGGAGAACG
 GTTCCCAAGGAAAATCATATGAACGCAGTGAATCCATTCTCTCGTTTCTGCAGAAGCACAGAAATCACA
 TGGTGGACTGGGCTTCTCAAAGCCAAGGCCGTGGCGGAGAGTTCAACTCAGTCCAGCTCCAGCATCTAC
 TACCCCGAGCCATTCTGGAGGAAACACCTACGAAGGTAAAGAAACAAGGACAGTATAATACATAGTC
 TTCTGCCCTCGGCCACTTAAGCGGCATCGGGCTAACGACCATATTAGTGCATGAGGGCGGAGAGAG
 CAGCATATACATTCGCGACATCATTAAACAAGGGACGCAAGATTCCCGCAAGAGAAGACGCCTATGAAGGA
 TCATCTCCAGCAACTATCATACACCAAACGTGAGTCGCGCTGAACCACCTTCACTTAGTGGAGAGAGCC
 ATGATTCGAAGCAGGACGTGACATTCAGCGTCCCTCATCATCAGTCAGAGAACATCAGAAAAGCAGCGCG
 GAAGAAAAATACATAGAGCCGCGAAAATATGAGACATCCGTGATCCACTCTTTGCCATTTGGCGAACTG
 CTGGCTGGTCACAGGAGAGCCAAGTTCTTCGAGTGCCAGGAGTGCCGAGAAGCCTTCGCACGAAGGAGCG
 AGCTCATCGAACACCAGAAGATCCACGATCGCGAGCGGCCATCAGGGTCCCGACACTATGAACGATCAGT
 GATACGACGCTGGCCCCATCCGACCCTCAGACATCTTACGCACAGGAGAGGTTTACAGCAAGACGAGTT
 CGCAAATTTAGGGCTTTGGCCAGCGGTTCCACCACATCTAATAACCTGTAGTGCAAAAAATTTATGCC
 AGGAAACATTTAATGCAGAAGAGCCTCATGATAAAGAAACCCACGACAAAAGATCCATGATAAAGAGCC
 ATACGGTAAAGAGCCAGCGGCAAGAGCCTCATGGTGTGAACCTCAGGACAAGGAGCCTCTTGATCAG
 GAGATGCGATCAGAGGAACCGCACGACGATAAACCTCACGGTCAGGAACCTCATGATGACAAGCCCCACG
 GCCAGGAGCCTCACGACGACAAGCCGATGGTCAGGAGCCACACGGCGACGAACCTCACGGCCAGGAGCC
 TCACGGCGATGAACCACATGACAAGGAGCCTATTGATCAGGAAATGAGAAGTGAGGAGCCACATTCTGAG
 GAGAGCCACGGGACGAGCCGACGAGAAGAATCACATGGCCAAGAGAAGGTTGAGGACGCTACGATTC
 AGGCTTCTGTGTCCGAGGACACCAAAAGGACGATGCAGGCGATGCGATTTACGAATGTCAGGACTGCGG
 TCTGGGATTTACCGACCTCAATGATCTCAGTCTCATCAGGACACCCATAGCAGGAAGGCTCTTGATAGC
 AGCCGCGAGTACGCACACAGTGAAGTGCACGCGCACTCAGTGTCCGAGTTTGAAAAAAGTGTAGTGGAG
 AAAAGCTGTATGAGTGCCGAAGTGCAGCGAATCTTTTATACATTCATCCTTGCTCTTTGAGCACCAGCG
 AGTACACGAACAGGATCAGTTGTATTCTGTGAAGGCATGTGACGACGATTCATAGCACTGCTCCCTGTG
 CGGCCTCGACGAAATGCACTGTGAGCGAAAATCCGGCTGTGTCTGGTCCGCAATACGCTGTAGACAGT
 GTGGTCAGGGATTCATCCACTCTTCTGCCTTGAACGAGCATATGCGGCAACACAGGGATAACGAGATCAT
 GGAGCAATCCGAGCTCTCAGACGAAATCTTTATCAGGGGCTGGCCCTGACAGAAATCAAGGACGCGAG
 ACAGAAGAGAAAATGTTTGAGTGCACCATCTGTGGAGAGTGTCTTCCACCGCAAGCAGCTCGGGGACC
 ATCACACCAAGGTACACAAGGACGAGCCTTATGAATACGGGCCCTCATATACCCATGCTTCTTCTTAC
 TGAACCGTTAGGAAGCATATTCCTCTTTACGAGTGAAGGACTGTGGCCAGAGCTTTTTGGATGATACC
 GTCATCGTGTAGAGAATGGTCTTTTATCCAGAACGGGAAGGCGGCTCAGAGATTGTCCGCGCTACAGCTC
 AGGAGGTGGAGGTAACGTGTTGATCCCTCAGGAAGTCTTCGCATCCAAGGTAGCAACGACAGAGGCGG
 AGAACCAGAGGTGGAGGCGCCGAGCCTGAGGTTGAAGCCGCGAGCCGAGGTGGAAGCTGCTGAGCCC
 AATGGTGAAGCGGAGGGACCTGACGGCGAGGCCGCGAGCCTGATGGAGAGGCTGAACAGCCTAATGGCG
 AAGCTGAGCAACCGAACGGTGTGCTGATGAACCAGATGGCGCCGTATCGAAGATCCTGAAGAACGGG
 TGACGAGCCTGAAGAGGATGTGGAAGAGCCGAGGGAGACGCCGACGAGCCAGACGGGCGAGATATCGAA
 GATCCAGAAGAGGAAGGCGAAGATCAGGAGATCGAGGTGAGGAGCCTTACTACAATTGCCACGAGTGCG
 CTGAGACATTCGCCAGTTCTTCTGCATTTGGCGAGCATCTGAAGAGCCACGCCTCAGTGATCATCTTCGA
 GCCAGCGAACGCTCCTGGTGAAGTCTCCGGCTACATCGAAAGAGCTAGCACTTCCGCTGGGGGAGCAGAA
 CAGGCTGATGACAAGTACTTCAAGTGCGATGTCTGTGGCCAGCTGTTAATGACAGGCTTCTCTCGCTA
 GGCACCAGAACAGCCACACTGGT

ACGCGTACGCGGCCGCTCGAG - GFP Tag - GTTTAA

Protein Sequence:

>MG224127 representing NM_008817
 Red=Cloning site Green=Tags(s)

MYHHEDDTNSDMNSDDMSRSGRETPPRPSHAFGSELDLERRGRSRDVEPRDRWPYTRNPRSRLPQRDL
 SLPVMSRPHFGLDRDDRRSMDYESRSQDAESYQNVVELKEDKKPQNPIQDNLENYRKLKSLGVQLAEDD
 RSHSMTQGHSSSRKRTAYPSTSRGLKPMPEAKKPSHRRGICEDESSHGVIMEKFIKDVARNPKSGRAREL
 NERPPRFRPNNDNWKDSSSSRRESVIQERGYEGSAFRGGFRFNADLASRSRALERKRYHFDSDERGSG
 HEHKSCVRKKPFECGAEMRQAMSMGNLNSPSFSESQSIDFGANPYVCDECGRQFSVISEFVEHQIMHTRE
 NLYEYGESFIHSAVNEVQKGGGGKRFECKECGETFSRSAALAEHRQIHAREYLAECRDQEDEETIMPS
 PTFSELRQKMYGKDKFYECKVCKETFLHSSALIEHQIHRGNSSDRDNERERDRRARAREQRERERE
 RERELGEPFLTCPNFNEFRKMYRKDKIYECKVCGESFLHLSSLREHQIHRGNPFENKSRMCEETFV
 PSQSLRRRQKTYREKLFDFNNARDALMGNSDSEHQKNSRRNFEGRGFEKPFVESQKSHITRPPENK
 DDDKPFITISVNPNDKLFKPFIMENGSGGKSYERSVIHSLGSAEAQKSHGGLGFSKPRPVAESSTQSSSIY
 YPRAHSGNTYEGKEYKDSIIHSLPAPRPLKRHRANDHIQCDEGGESSIYIPDIINKGRKIPAREDAYEG
 SSSSNYHTPNVSRAPPSLGSESHDSKQDVTFVSPSSSVREHQKARAKKYYIEPRNNETSVIHSLPFGEL
 LAGHRRAKFFECQECGEAFARRSELIEHQIHDRERPSGRHYERSVIRSLAPSDPQTSYAQERFIQEQV
 RKFRAFQQRSTTNNLSVQKIYAQETFNAEPPHDKETHGQKIHDKEPYGKEPSGKEPHGDEPQDKEPLDQ
 EMRSEEPHDDKPHGQEPHDDKPHGQEPHDDKPHGQEPHGDPEHGQEPHGDPEHDKPEIDQEMRSEEPHSE
 ESHGDEPHGEEESHGQEKVEDATIQASVSEEHQKDDAGDAIYECQDCGLGFTDLNDLTSHQDTHSRKALVD
 SREYAHSEVHAHSVSEFEKKCSGKLYECPKCGESFIHSSLLFEHQRVHEQDQLYSVKACDDAFIALLPV
 RPRRNCTVERNPAVSGSAIRCRQCGQGFHSSALNEHMRQHRDNEIMEQSELDEIFIQGLALTEYQGSSE
 TEEKLFECTICGECFFAKQLGDHHTKVHKDEPYEYGPSYTHASFLEPLRKHIPLYECKDCGQSFLLDDT
 VIAERMVFHPEREGGSEIVAATAQEVEANVLIPQEVLRIQGSNAEAAEPEVEAAEPEVEAAEPEVEAAEP
 NGEAEPDGEAAEPDGEAEQPNGEAEQPNGDADEPDGAGIEDPEERADEPEEDVEEPEGDADPEPDGADIE
 DPEEEGEDQEIIEVEEPPYNCHECAETFASSAFGEHLKSHASVIFEPANAPGECGSIYIERASTSAGGAE
 QADDKYFKCDVCGQLFNDRLSLARHQNSHTG

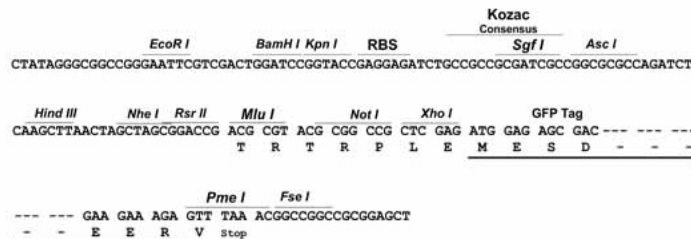
TRTRPLE - GFP Tag - V

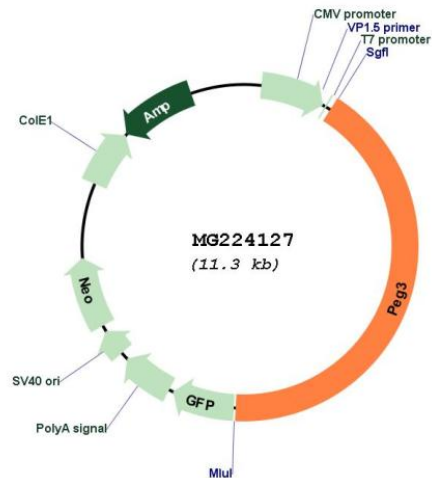
Restriction Sites:

SgfI-MluI

Cloning Scheme:

Cloning sites used for ORF Shutting:



Plasmid Map:


ACCN: NM_008817

ORF Size: 4713 bp

OTI Disclaimer: The molecular sequence of this clone aligns with the gene accession number as a point of reference only. However, individual transcript sequences of the same gene can differ through naturally occurring variations (e.g. polymorphisms), each with its own valid existence. This clone is substantially in agreement with the reference, but a complete review of all prevailing variants is recommended prior to use. [More info](#)

OTI Annotation: This clone was engineered to express the complete ORF with an expression tag. Expression varies depending on the nature of the gene.

Components: The ORF clone is ion-exchange column purified and shipped in a 2D barcoded Matrix tube containing 10ug of transfection-ready, dried plasmid DNA (reconstitute with 100 ul of water).

Reconstitution Method:

1. Centrifuge at 5,000xg for 5min.
2. Carefully open the tube and add 100ul of sterile water to dissolve the DNA.
3. Close the tube and incubate for 10 minutes at room temperature.
4. Briefly vortex the tube and then do a quick spin (less than 5000xg) to concentrate the liquid at the bottom.
5. Store the suspended plasmid at -20°C. The DNA is stable for at least one year from date of shipping when stored at -20°C.

RefSeq: [NM_008817.2](#), [NP_032843.2](#)

RefSeq Size: 6624 bp

RefSeq ORF: 4716 bp

Locus ID: 18616

UniProt ID: [Q3URU2](#)

Cytogenetics: 7 3.89 cM

Gene Summary: Induces apoptosis in cooperation with SIAH1A. Acts as a mediator between p53/TP53 and BAX in a neuronal death pathway that is activated by DNA damage. Acts synergistically with TRAF2 and inhibits TNF induced apoptosis through activation of NF-kappa-B. Plays a role in regulating maternal behavior and offspring growth.[UniProtKB/Swiss-Prot Function]