

Product datasheet for **MG224113**

Ssrp1 (NM_001136081) Mouse Tagged ORF Clone

Product data:

Product Type:	Expression Plasmids
Product Name:	Ssrp1 (NM_001136081) Mouse Tagged ORF Clone
Tag:	TurboGFP
Symbol:	Ssrp1
Synonyms:	C81323; Hmg1-rs1; Hmgi-rs3; Hmgox; T160
Mammalian Cell Selection:	Neomycin
Vector:	pCMV6-AC-GFP (PS100010)
E. coli Selection:	Ampicillin (100 ug/mL)



[View online »](#)

ORF Nucleotide Sequence:

>MG224113 representing NM_001136081
 Red=Cloning site Blue=ORF Green=Tags(s)

TTTTGTAATACGACTCACTATAGGGCGGCCGGAATTCGTCGACTGGATCCGGTACCGAGGAGATCTGCC
 GCC**CGGATCGCC**

ATGGCAGAGACATTGGAGTTCAACGACATCTTCCAGGAGGTGAAAGGGTCCATGAATGATGGGAGGCTTC
 GATTGAGCCGTCAGGGTATCATCTTTAAGAACAGCAAGACGGGCAAAGTGACAACATCCAGGCTGGGA
 GTTGACAGAAGGCATCTGGCGTCGGGTAGCATTAGGCCATGGGCTTAAACTGCTCACAAAGAATGGGCAT
 GTCTACAAGTACGATGGCTTCCGCGAATCGGAGTTTGAGAACTCTGACTTCTTCAAACACTACTATC
 GCCTTGAGCTAATGGAGAAGGATCTGTGTGTAAGGGCTGGAAGTGGGGACAGTGAAGTTTGGAGGACA
 GCTGCTTTCTTTGACATTGGTGATCAACCAGTCTTTGAGATACCCCTAAGCAATGTGTCCAGTGTACC
 ACAGGCAAGAATGAGGTGACCCTGGAATCCACCAGAATGACGATGCTGAAGTATCTCTCATGGAGGTGC
 GCTTCTATGTTCCCTCCACGCAGGAAGATGGTGTGGACCCGTGGAGGCCCTTGGCCAGAATGTTCTGTC
 AAAGGCAGATGTGATCCAGGCCACGGAGACGCCATCTGCATCTCCGGGAGCTGCAGTGTGACTCCT
 CGCGGTGATACGATATCCGGATCTACCCACCTTCTACACCTGCATGGCAAGACCTTTGACTACAAGA
 TCCCTATACTACAGTTCTCCGTCTTCTCTGCTACCACACAAGGATCAGAGACAGATGTTCTTTGTGAT
 CAGCTTGATCCTCCATCAAGCAGGGCCAAACTCGTTACCACCTTCTGATCCTCCTCTTCTCCAAGGAT
 GAGGACATCTCCTTGACTCTCAACATGAATGAGGAAGAAGTAGAAAAGCGCTTTGAGGGGCGACTCACCA
 AGAACATGTCAGGATCCCTCTATGAAATGGTCAGTCGGGTGATGAAAGCACTTGTCAACCGTAAATCAC
 AGTCCCAGGCAACTTCCAAGGGCACTCAGGGGCCAGTGTATTACCTGCTCCTATAAGGCCAGCTCAGGA
 CTCCTGTACCCACTGGAGCGGGCTTCACTACGTGCATAAGCCCCTGTGCACATCCGCTTTGATGAGA
 TCTCTTTTGTCAACTTTGCCCGTGGCACCACGACCACTCGTTCTTTCGACTTTGAGATTGAGACCAAGCA
 AGGCACCTCAGTATACCTTCAGCAGCATTGAAAGGGAGGAGTATGGAAAGCTTTTCGATTTTGTCAATGCG
 AAAAAGCTCAACATCAAGAACAGAGGACTGAAAGAGGGCATTAAACCAGGCTATGACGATTATGCTGACT
 CTGATGAAGACCAGCATGATGCCTATTTGGAGAGGATGAAGGAGGAGGGCAAGTCCGGGAGGAGAATGC
 CAATGACAGCAGCGACTCAGGAGAAGAGACTGATGAGTCCTTCAATCCTGGTGAAGAAGAAGAAGAT
 GTGGCAGAGGAGTTTGACAGCAATGCCTCTGCCAGCTCCTCCAGCAATGAGGGTGACAGTACCCTGAAG
 AGAAGAAACGGGAACAGCTCAAAGGGCTAAGATGGCCAAGGATCGAAAGAGCCGAGGAAGTCTCAGA
 GGCAAAGAAGGGTAAAGATCCAAACGCCCAAAGAGGCCATGTCTGCGTACATGCTGTGGCTTAATGCA
 AGCCGCGAGAAGATCAAGTCGGATCATCTTGGCATCAGTATCACAGATCTTCCAAGAAGGCAGGGGAGA
 TCTGGAAGGGAATGTCCAAGAGAAGAAGGAGGAGTGGGACCGCAAGGCTGAGGATGCTAGGAGGGAGTA
 TGAGAAAGCCATGAAAGAGTATGAAGGAGGAAGAGGGGACTCATCTAAAAGGGACAAGTCTAAGAAGAAA
 AAGAAAGTAAAAGCAAAGATGGAAAAAAGTCCACTCCTTCCCGGGGCTCGTCAATCAAGTCTTCAATCCA
 GGCAGTTGAGTGACAGCTTCAAGAGCAAAGAGTTTGTGTCCAGTATGAGAGCTCTTCCAGGCGAGAACAA
 GAGCAAAAAGAAGAGGAGGCGGAGCGAGGACTCTGAAGAGGAGCTAGCCAGTACCCTCCAAGCTCAGAG
 GACTCTGCCTCGGGATCTGATGAA

ACGCGTACGCGGCCGCTCGAG – GFP Tag – GTTTAA

Protein Sequence: >MG224113 representing NM_001136081
 Red=Cloning site Green=Tags(s)

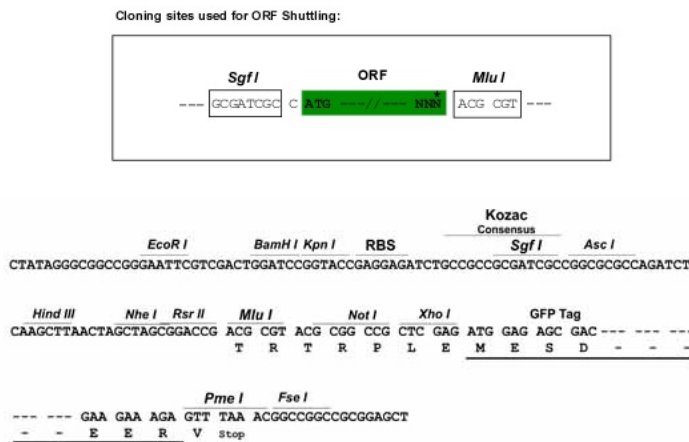
```

MAETLEFNDFIQEVKGSMDGRLRLSRQGIIFKNSKTGKVDNIQAGELTEGIWRRVALGHGLKLLTKNGH
VYKYDGFRESEFEKLSDFFKTHYRLELMEKDLCKVKGWNWGTVKFGGQLL SFDIGDQPVFEIPLSNVSQCT
TGKNEVTLEFHQNDDAEVSLMEVRFYVPPTQEDGVDPEAFAQNVLSKADVIQATGDAICIFRELQCLTP
RGRYDIRIYPTFLHLHGKTFDYKIPYTTVLRLLPHKDQRQMFVVISLDPPKQQTTRYHFLILLFSKD
EDISLTLNMEEEEVEKRFEGRLTKNMSGSLYEMVSRVMKALVNRKITVPGNFQGHSGAQCITCSYKASSG
LLYPLERGFYVHKPPVHIRFDEISFVNFARGTTTTRSFDFE IETKQGTQYTFSSIEREEYGKLFDFVNA
KKLNIKNRGLKEGINPGYDDYADSDQHDAYLERMKEEGKIREENANDSSDSSGEETDESFPGEESD
VAEEFDSNASASSSSNEGSDREKKREQLKRAKMAKDRKSRRKSSEAKKGKDPNAPKRPMASAYMLWLN
SREKIKSDHPGISITDL SKKAGEIWKGMSKKEEWDKRAEDARREYKAMKEYEGGRGDSKRDKSKKK
KKVKAKMEKKSTPSRGSSSKSSSRQLSDSFKSKEFVSSDES SSGENKSKKKRRRSEDSEELASTPPSSE
DSASGSDE
  
```

TRTRPLE - GFP Tag - V

Restriction Sites: SgfI-MluI

Cloning Scheme:



ACCN: NM_001136081

ORF Size: 2124 bp

OTI Disclaimer: The molecular sequence of this clone aligns with the gene accession number as a point of reference only. However, individual transcript sequences of the same gene can differ through naturally occurring variations (e.g. polymorphisms), each with its own valid existence. This clone is substantially in agreement with the reference, but a complete review of all prevailing variants is recommended prior to use. [More info](#)

OTI Annotation: This clone was engineered to express the complete ORF with an expression tag. Expression varies depending on the nature of the gene.

Components: The ORF clone is ion-exchange column purified and shipped in a 2D barcoded Matrix tube containing 10ug of transfection-ready, dried plasmid DNA (reconstitute with 100 ul of water).

Reconstitution Method:

1. Centrifuge at 5,000xg for 5min.
2. Carefully open the tube and add 100ul of sterile water to dissolve the DNA.
3. Close the tube and incubate for 10 minutes at room temperature.
4. Briefly vortex the tube and then do a quick spin (less than 5000xg) to concentrate the liquid at the bottom.
5. Store the suspended plasmid at -20°C. The DNA is stable for at least one year from date of shipping when stored at -20°C.

RefSeq: [NM_001136081.2](#), [NP_001129553.1](#)

RefSeq Size: 2721 bp

RefSeq ORF: 2127 bp

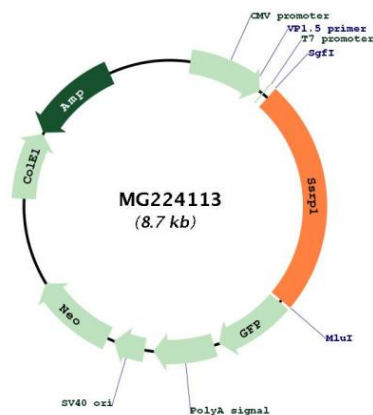
Locus ID: 20833

UniProt ID: [Q08943](#)

Cytogenetics: 2 49.45 cM

Gene Summary: Component of the FACT complex, a general chromatin factor that acts to reorganize nucleosomes. The FACT complex is involved in multiple processes that require DNA as a template such as mRNA elongation, DNA replication and DNA repair. During transcription elongation the FACT complex acts as a histone chaperone that both destabilizes and restores nucleosomal structure. It facilitates the passage of RNA polymerase II and transcription by promoting the dissociation of one histone H2A-H2B dimer from the nucleosome, then subsequently promotes the reestablishment of the nucleosome following the passage of RNA polymerase II. The FACT complex is probably also involved in phosphorylation of 'Ser-392' of p53/TP53 via its association with CK2 (casein kinase II). Binds specifically to double-stranded DNA. Also acts as a transcriptional coactivator for p63/TP63.[UniProtKB/Swiss-Prot Function]

Product images:



Circular map for MG224113