

## Product datasheet for **MG224093**

### TII1 (NM\_009390) Mouse Tagged ORF Clone

#### Product data:

Product Type:	Expression Plasmids
Product Name:	TII1 (NM_009390) Mouse Tagged ORF Clone
Tag:	TurboGFP
Symbol:	TII1
Synonyms:	b2b2476Clo; TII; TII-1
Mammalian Cell Selection:	Neomycin
Vector:	pCMV6-AC-GFP (PS100010)
E. coli Selection:	Ampicillin (100 ug/mL)
ORF Nucleotide Sequence:	>MG224093 representing NM_009390 Red=Cloning site Blue=ORF Green=Tags(s)

TTTTGTAATACGACTCACTATAGGGCGGCCGGGAATTCGTCGACTGGATCCGGTACCGAGGAGATCTGCC  
GCC**CGATCGCC**

ATGGGTTTGAAGCGCTCTCCCGAGGATGCTCCTGTGGTTGGTGGTCTCGGGTATTGTTTTCTCCCGG  
TGCTGTGGGTCTGCGCTGGCCTCGATTATGATTACACTTTTGATGGGAACGAAGAGGACAAAACGGAGCC  
TATAGATTACAAGGACCCGTGCAAAGCTGCTGTGTTTTGGGGTGACATCGCCTTAGATGATGAAGACTTA  
AATATCTTCAAATAGACAGGACAATTGACCTGACCCAGAGCCCTTTGGAAAACCTGGACATATTACAG  
GTGGCTTTGGAGACCATGGCATGCCAAAGAAGCGAGGGGCACTCTACCACTTATAGAGAGGATCAGAAG  
AATTGGCTCTGGCTTGGAGCAAAATAACACGATGAAGGGAAAAGCACCTCCAAAATTGTCAGAGCAAAGT  
GAGAAAAATCGAGTTCCAGAGCTGCTACCTCAAGAACGAAAAGGATATGGCCTGGGGGTGTCAATCCTT  
ATGTCATAGGAGGAACTTTACTGGCAGCCAGAGAGCCATGTTCAAGCAGGCCATGAGACTGGGAAAA  
GCACACCTGTGTGACGTTCACTGAGAGAAGTGATGAAGAAAGTTATATTGTGTTACCTACAGGCCCTGT  
GGATGTGCTCCTATGTTGGTCGGCGGGGAAATGGCCCTCAGGCCATCTCTATTGGCAAGAACTGTGACA  
AGTTTGAATTGTTGTTCACTGAACTGGGCCACGTGATAGGCTTCTGGCATGAACATACCCGCCAGACCC  
AGACAACCATGTCACCATCATTAGAGAGAACATCCAGCCAGGTCAAGAGTACAATTTTCTAAAGATGGAG  
CCTGGAGAAGTGAACCTCTTTGGGAAAGATATGATTTTGACAGTATCATGCATACGCCAGGAACACCT  
TCTCAAGAGGGATGTTTTAGACACAATACTCCCCTCCCGTGATGATAATGGCATTTCGTCCTGCAATTGG  
TCAACGGACCCGGTTAAGCAAAGGAGACATTGCACAAGCAAGAAAGCTGTATCGATGCCAGCATGTGGA  
GAAACCTGCAAGAATCCAGTGGCAACCTTTCTCCCCAGGATCCCAAATGGCTACCCTTCTACACAC  
ACTGCATCTGGAGAGTGTCTGTGACCCCGGAGAAAAGATTGTCTTGAATTTTACCACAATGGACCTTTA  
CAAAGTAGTTTGTGCTGGTATGATTACATTGAAGTAAGAGATGGTTACTGGAGGAAGTCACCTCTCCTT  
GGTAGATTCTGTGGGACAAAGTGGCTGGAGTTCTTACATCTACGGACAGCAGAATGTGGATTGAGTTTC  
GTAGCAGCAGTAACTGGGTAGGAAAAGGTTTGCAGCTGTCTATGAAGCGATTTGTGGAGGGGAGATAAG  
GAAAAACGAAGGGCAGATTCAGTCTCCAATTACCCCGATGACTACCGACCAATGAAGGAGTGTGTATGG



[View online »](#)

```

AAAAATGGTGTCCGAGGGCTACCATGTTGGACTGACCTTTTCAGGCCTTTGAGATCGAAAGACATGACA
GCTGTGCCTATGACCACCTAGAAGTTCGAGATGGAGCCAGTGAGAACAGCCCTTTGATAGGACGGTCTG
TGGTTATGACAAACCTGAAGATAAAGGTCTACTTCCAACACCCTGTGGATGAAGTTTGTCTCTGACGGG
ACTGTGAACAAGGCAGGGTTTGTGCGAACTTTTTAAAGAGGAAGATGAGTGTGCCAACCTGACCGAG
GAGGCTGTGAACAGAGGTGTCTTAACACACTAGGCAGCTACCAGTGTGCCTGTGAGCCTGGCTATGAACT
GGGCCCAGACAGAAGAAGCTGTGAAGCTGCTTCCGAGGACTTCTGACGAAGCTCAATGGCACCATAACC
ACCCCGGCTGGCCAAAGAGTACCCTCCAACAAAAACTGTGTGTGGCAAGTGATCGCGCCAAGCCAGT
ACAGAATCTCTGTGAAGTTTGAAGTTTTTGAATTGGAAGCAATGAAGTTTGCAAATACGATTACGTGGA
GATCTGGAGCGCCTTCTCTGAGTCTAAACTGCATGGCAAGTTCTGTGGCGCTGACATACCTGAAGTG
ATGACTTCCCATTCAACAACATGAGGATTGAATTCAAGTCAGACAACACTGTATCCAAGAAGGGCTTCA
AAGCACATTTTTCTCAGATAAGGATGAGTGTTCAAAGGATAATGGTGGCTGTCAGCATGAGTGTGTCAA
CACGATGGGAAGTTACACGTGTCAGTCCCGAATGGATTCTGTGTCATGAGAACAAGCATGATTGCAAG
GAAGCCGAGTGTGAACAGAAGATACACAGCCCAAGTGGTCTCATCACCAGTCCCAACTGGCCAGACAAGT
ATCCAAGCAGAAAGAGTGCACGTGGGTGATCAGTGCCATTCTGGCCACCGCATCATTAGCCTTCAA
TGAGTTTGAGGTTGAACAACATCAAGAATGTGCTTATGATCACTTGAAAATTTTTGATGGAGAAACGGAG
AAGTCACCAATACTTGGCCGACTATGTGGCAGCAAGATACCAGATCCCCTCATGGCTACTGGGAATGAAA
TGTTTTATTCGGTTTATTTCTGATGCCTCTGTTCAAAGAAAAGGCTTTCAAGCTACACATTCCACAGAGTG
TGGTGGTCGATTGAAAGCAGAGTCAAAGCCTAGAGACCTGTACTCCCATGCTCAGTTTGGTGATAATAAC
TACCCAGGACAACCTGGACTGTGAATGGTTGTTGGTGTGAGAACGAGGATCTCGACTTGAATTGTCCTTCC
AGACATTCGAAGTAGAAGAAGAAGCTGACTGTGGCTATGACTATGTTGAAGTCTTTGATGGTCTCAGTTC
AAAAGCTGTGGTCTTGGTAGATTCTGTGGGTGAGGCCACCAGAAGAAATCTATTCAATTGGAGATGTG
GCTTTGATTCAATTCACACAGATGACACTATCAACAAGAAAGGATTTTATATAAGATATAAAAGTATAA
GATACCCGGAAACGATGCATGCCAAGAAC
    
```

ACGCGTACGCGGCCGCTCGAG - GFP Tag - GTTTAA

**Protein Sequence:**

>MG224093 representing NM\_009390  
 Red=Cloning site Green=Tags(s)

```

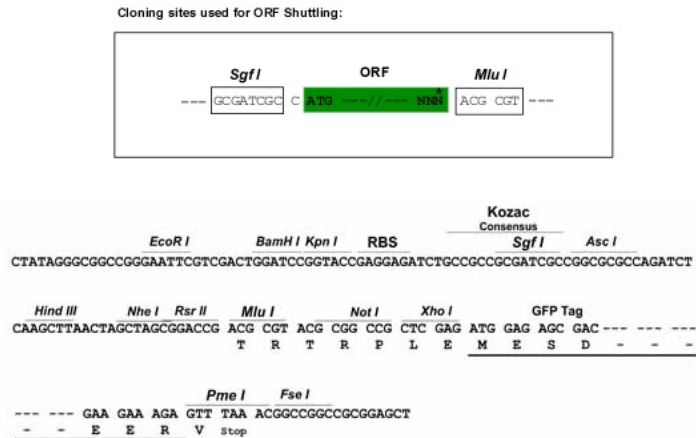
MGLQALSPRMLLWLVVSGIVFSRVLWVCAGLDYDYTFDGNEDKTEPIDYKDPCKAAVFWGDIALDDEDL
NIFQIDRTIDLTSQSPFGKLGHITGGFGDHGMPKRGALYQLIERIRRIGSGLQNNMTMGKAPPKLSEQS
EKNRVPRAATSRTERIWPGGVIPPVIGGNFTGSQRAMFKQAMRHWEKHTCVTFTERSDEESYIVFTYRPC
GCCSYVGRNGPQAISIGKNCDFGIVVHELGHVIGFWHEHTRPDRDNHVTIIRENIQPGQEYNFLKME
PGEVNSLGERYDFDSIMHYARNTFSRGMFLDTILPSRDDNGIRPAIGQRTRL SKGDIAQARKLYRCPACG
ETLQESSGNLSSPGFPNGYPSYTHCIWRVSVTPGEKIVLNFTTMDLYKSSLCWYDYIEVRDGYWRKSPLL
GRFCGDKVAGVLTSTDSRMWIEFRSSSNWVGKFAAVYEAI CGGEIRKNEGQIQSPNYPDDYRPMKECVW
KIMVSEGYHVGLTFQAFEIERHDS CAYDHLEVRDGASENSPLIGRF CGYDKPEDIRSTSNTLWMKFVSDG
TVNKAGFAANFFKEEDECAKPD RGGEQRCLNTLGSYQCACEPGYELGPDRRSCEAACGGLLTKLNGTIT
TPGWPKEYPPNKNVWQVIAPSQYRISVKFEFFELGNEVCKYDYVEIWSGLSSES KLHGKFCGADIPEV
MTSHFNMRIEFKSDNTVSKKGFKAHFFSDKDECSKDNGGCQHECVNTMGSYTCQCRNGFVLHENKHDK
EAECEQKIHSPSGLITSPNWDKYP SRKECTWVISAIPGHRITLAFNEFEVEQHQCAYDHLEIFDGETE
KSPILGR LCGSKIPDPLMATGNEMFIRFISDASVQRKGFQATHSTECGRLKAESKPRDLYSHAQFGDNN
YPGQLDCEWLLVSEGRSLELSFQTFEVEEEADCGYDYVEVFDGLSSKAVGLGRFCGSGPPEE IYSIGDV
ALIHFTDDTINKKGFYIRYKSIRYPETMHAKN
    
```

TRTRPLE - GFP Tag - V

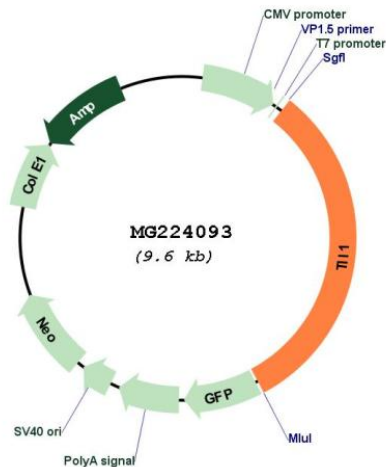
**Restriction Sites:**

Sgfl-MluI

**Cloning Scheme:**



**Plasmid Map:**



ACCN: NM\_009390

ORF Size: 3039 bp

OTI Disclaimer: The molecular sequence of this clone aligns with the gene accession number as a point of reference only. However, individual transcript sequences of the same gene can differ through naturally occurring variations (e.g. polymorphisms), each with its own valid existence. This clone is substantially in agreement with the reference, but a complete review of all prevailing variants is recommended prior to use. [More info](#)

<b>OTI Annotation:</b>	This clone was engineered to express the complete ORF with an expression tag. Expression varies depending on the nature of the gene.
<b>Components:</b>	The ORF clone is ion-exchange column purified and shipped in a 2D barcoded Matrix tube containing 10ug of transfection-ready, dried plasmid DNA (reconstitute with 100 ul of water).
<b>Reconstitution Method:</b>	<ol style="list-style-type: none"><li>1. Centrifuge at 5,000xg for 5min.</li><li>2. Carefully open the tube and add 100ul of sterile water to dissolve the DNA.</li><li>3. Close the tube and incubate for 10 minutes at room temperature.</li><li>4. Briefly vortex the tube and then do a quick spin (less than 5000xg) to concentrate the liquid at the bottom.</li><li>5. Store the suspended plasmid at -20°C. The DNA is stable for at least one year from date of shipping when stored at -20°C.</li></ol>
<b>RefSeq:</b>	<u><a href="#">NM_009390.3</a></u>
<b>RefSeq Size:</b>	4928 bp
<b>RefSeq ORF:</b>	3042 bp
<b>Locus ID:</b>	21892
<b>Cytogenetics:</b>	8 32.19 cM