

Product datasheet for **MG224081**

Rad23a (NM_009010) Mouse Tagged ORF Clone

Product data:

Product Type: Expression Plasmids
Product Name: Rad23a (NM_009010) Mouse Tagged ORF Clone
Tag: TurboGFP
Symbol: Rad23a
Synonyms: 2310040P19Rik; AL024030; HR23A; mHR23A
Mammalian Cell Selection: Neomycin
Vector: pCMV6-AC-GFP (PS100010)
E. coli Selection: Ampicillin (100 ug/mL)
ORF Nucleotide Sequence: >MG224081 representing NM_009010
 Red=Cloning site Blue=ORF Green=Tags(s)

TTTTGTAATACGACTCACTATAGGGCGGCCGGAATTCGTCGACTGGATCCGGTACCGAGGAGATCTGCC
 GCC**CGATCGCC**

ATGGCCGTCACCATCACCTTAAAACGTTGCAGCAGCAGACCTTCAAGATCCGCATGGAACCTGACGAGA
 CCGTAAAGGTGCTGAAGGAGAAGATAGAAGCTGAGAAGGGTAGAGATGCTTCCCGTGGCTGGACAGAA
 ACTCATCTATGCTGGCAAGATCTTGAGTGACGATGTTCCCATCAAGGAATACCATATAGATGAGAAGAAC
 TTTGTGGTTGTCATGGTGACCAAGGCCAAAGCTGGCCAGGGTATCCCGCACCCAGAGGCTCACCCA
 CTGCTGTCCCGGAGCCCTCCACACCTTCCCTCCAGTCCCTGGCATCAGGCATGTCTCATCCCCACCTAC
 CAGCAGAGAGGACAAGAGCCCATCAGAGGAGTCAACCACCACAACATCTCCAGAATCCATTTCTGGCTCT
 GTTCCCTCTTCAGGTAGCAGCGGGCAGAGGAAGACGCAGCTTCCACATTAGTACTGGCTCTGAATATG
 AGACGATGCTGACTGAGATCATGTCCATGGGCTACGAGCGGGAGCGGGTTGTGGCCGATTGAGGGCCAG
 CTACAACAACCCACCGAGCTGTGGAGTACTTGCTCACGGGAATTCAGGAAGCCCTGAGCCTGAACAT
 GGTTCTGTCCAGGAAAGCCAGGCGCTGAGCAGCCGCCACAGAAGCAGGGGAGAACCCCTGGAGTTCC
 TGCGGGACCAGCCTCAGTCCAGAACATGCGGCAAGTGATTCAACAGAACCCAGCGCTCTGCCTGCTCT
 GCTCCAGCAGCTGGGTGAGGAAAACCTCAGCTCCTGCAGCAAATTAGCCGTACCAGGAGCAGTTCATC
 CAGATGTTGAATGAGCCTCCCGGGGAGCTGGCGGACATCTGTAGTAGAGGGGGAGTTGGTGCCATAG
 GTGAGGAGGCCCCACAGATGAACTATATCCAGGTGACACCGCAGGAGAAGGAGGCTATAGAAAGGCTGAA
 GGCACTGGGCTTCCAGAGAGCCTGGTATCCAGGCTACTTCGCGTGTGAAAAAATGAGAATTTGGCT
 GCCAACTCTCTGAGTCAGAATTTGATGATGAG

ACGCGTACGCGGCCGCTCGAG - GFP Tag - GTTTAA



[View online »](#)

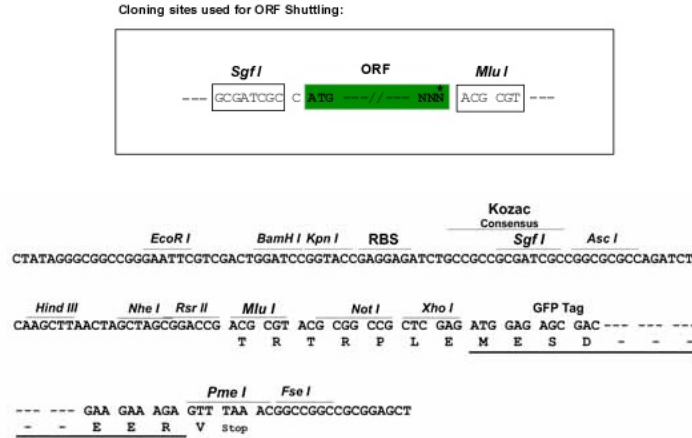
Protein Sequence: >MG224081 representing NM_009010
 Red=Cloning site Green=Tags(s)

MAVTITLKLQQQTFKIRMEPDETVKVLKEKIEAEKGRDAFPVAGQKLIYAGKILSDDVPIKEYHIDEKN
 FVVMVTKAKAGQGIPAPPEASPTAVPEPSTPFPVPLASGMSHPPTSREDKSPSEESTTTTSPESISGS
 VPSSGSSGREEDAATLVTGSEYETMLTEIMSMGYERERVVAALRASYNPHRAVEYLLTGIPGSPEPEH
 GSVQESQAPEQPATEAGENPLEFLRDQPQFQNMQRVIQQNPALLPALLQQLGQENPQLLQQISRHQEQFI
 QMLNEPPGELADISDVEGEVGAIGEEAPQMNYIQVTPQEKEAIERLKALGFPESLVIQAYFACEKNENLA
 ANFLLSQNFDDDE

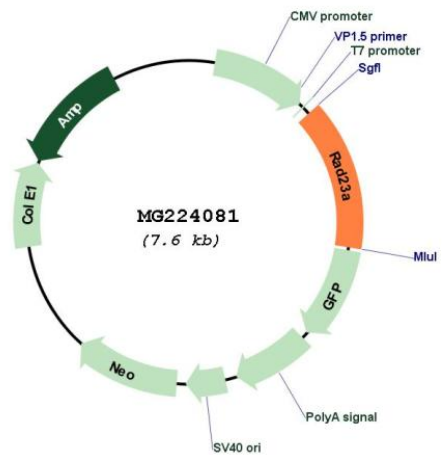
TRTRPLE - GFP Tag - V

Restriction Sites: SgfI-MluI

Cloning Scheme:



Plasmid Map:



ACCN: NM_009010

ORF Size:	1086 bp
OTI Disclaimer:	The molecular sequence of this clone aligns with the gene accession number as a point of reference only. However, individual transcript sequences of the same gene can differ through naturally occurring variations (e.g. polymorphisms), each with its own valid existence. This clone is substantially in agreement with the reference, but a complete review of all prevailing variants is recommended prior to use. More info
OTI Annotation:	This clone was engineered to express the complete ORF with an expression tag. Expression varies depending on the nature of the gene.
Components:	The ORF clone is ion-exchange column purified and shipped in a 2D barcoded Matrix tube containing 10ug of transfection-ready, dried plasmid DNA (reconstitute with 100 ul of water).
Reconstitution Method:	<ol style="list-style-type: none">1. Centrifuge at 5,000xg for 5min.2. Carefully open the tube and add 100ul of sterile water to dissolve the DNA.3. Close the tube and incubate for 10 minutes at room temperature.4. Briefly vortex the tube and then do a quick spin (less than 5000xg) to concentrate the liquid at the bottom.5. Store the suspended plasmid at -20°C. The DNA is stable for at least one year from date of shipping when stored at -20°C.
RefSeq:	NM_009010.6
RefSeq Size:	2074 bp
RefSeq ORF:	1089 bp
Locus ID:	19358
Cytogenetics:	8 C2
Gene Summary:	Multiubiquitin chain receptor involved in modulation of proteasomal degradation. Binds to 'Lys-48'-linked polyubiquitin chains in a length-dependent manner and with a lower affinity to 'Lys-63'-linked polyubiquitin chains. Proposed to be capable to bind simultaneously to the 26S proteasome and to polyubiquitinated substrates and to deliver ubiquitinated proteins to the proteasome (By similarity).[UniProtKB/Swiss-Prot Function]