

Product datasheet for **MG224060**

Baiap2 (NM_001037755) Mouse Tagged ORF Clone

Product data:

Product Type:	Expression Plasmids
Product Name:	Baiap2 (NM_001037755) Mouse Tagged ORF Clone
Tag:	TurboGFP
Symbol:	Baiap2
Synonyms:	IRSp53; R75030
Mammalian Cell Selection:	Neomycin
Vector:	pCMV6-AC-GFP (PS100010)
E. coli Selection:	Ampicillin (100 ug/mL)



[View online »](#)

ORF Nucleotide Sequence:

>MG224060 representing NM_001037755
 Red=Cloning site Blue=ORF Green=Tags(s)

TTTTGTAATACGACTCACTATAGGGCGGCCGGAATTCGTCGACTGGATCCGGTACCGAGGAGATCTGCC
 GCC**CGGATCGCC**

ATGTCGCTTTACGCTCGGAGGAGATGCACCGCTCACGAAAAATGTCTACAAGACCATCATGGAGCAGT
 TCAACCCAGCCTCCGCAACTTCATCGCCATGGGCAAGAACTATGAGAAAGCACTGGCAGGTGTACCTT
 CGCTGCCAAAGGCTATTTTCGATGCTCTGGTAAAGATGGGGGAGCTGGCCAGCGAGAGCCAGGGCTTAAG
 GAAGTTGGGGACGTCCTCTCCAGATGGCTGAGGTGCACCGCAGATCCAGAACCAGTTGGAAGAGACGC
 TGAAGTCTTTTACAATGAGCTGCTCACGCAGCTGGAGCAGAAAGTAGAACTGGACTCCAGGTATCTAAG
 TGCTGCACTGAAGAAATACCAAACGGAACAGAGGAGCAAGGGGACGCCCTGGACAAGTGTGAGGCTGAG
 CTGAAGAAGCTCCGCAAGAAGAGCCAAGGGAGTAAAGACCCTCAGAAGTACTCAGACAAGGAGCTGCAGT
 ACATCGATGCCATCAGCAATAAGCAGGGCGAGCTGGAGAAGTACGTGTCTGACGGCTACAAGACAGCACT
 CACTGAGGAGCGCAGGAGTTCTGCTTCTGGTGGAAAAGCAGTGCCTGTGGCCAGAAGCTGTGCTGCT
 TACCATTCCAAGGCAAGGAGTTGCTGGCCAGAAGCTGCCTCTGTGGCAGCAAGCTGTGCCAGCCCA
 ACAAGATCCCAGACCGTGTCTCAGCTGATGCAACAGATGGCCAATAGCAATGGCTCCATCCTTCCAAG
 TGCCCTGTGAGCTTCCAAGTCCAACCTGGTTCATCTCAGATCCCATTCTGGAGCCAAAGCCCTTGCCAGTG
 CCACCTGAGCTGGCACCATTTGTGGGGCGGATGTCTGCTCAGGAGAAATGTACCTGTGATGAATGGCGTGC
 CAGGCCCGGACAGCGAGGACTACAACCCCTGGGCTGACCGAAAGGCTGCCAGCCCAATCCCTGTCTCC
 CCCGAGTCTCAAAGCAAGCTGAGCGACTCGTACTCCAACACACTCCCGTGCGCAAGAGCGTGACGCCG
 AAGAACAGCTATGCCACCACTGAGAACAAGACACTGCCACGTTCAAGCTCCATGGCAGCTGGCCTAGAAC
 GTAATGGCCGATGCGGGTCAAGGCCATTTCTCCACGCGCCGGTGAACAATAGCACTGTGCTGAGTTC
 CAAGGAGGGCGACCTCATCACGCTGCTAGTGCCTGAGGCCCGTGACGGCTGGCACTATGGGGAGAGTGAG
 AAGACCAAGATGCGGGGCTGTTCCCTTCTCCTACACCCGGTCTGGACAGTGACGGAAGTGACAGAT
 TGCATATGAGCCTGCAGCAGGGCAAGAGCAGCAGCACAGGCAACCTCCTAGACAAGGATGACCTGGCCCT
 CCCCCCTCTGACTACGGCACGTCCTCCCGGCATTCCCACCCAGACAGCCGGCACATTCAAGCAGAGA
 CCCTACAGCGTGGCCGTTCTGCCTTCTCAGGGTCTGGATGACTACGGGGCACGGTCTGTGAGCAGGA
 ATCCCTTCGCAACGTCATCTGAAACCAACAGTGACCAATGACAGATCAGCCCCCTGTCTCAGC

ACGCGTACGCGGCCGCTCGAG – GFP Tag – GTTTAA

Protein Sequence:

>MG224060 representing NM_001037755
 Red=Cloning site Green=Tags(s)

MSLSRSEEMHRLTENYKTIMEQFNPSLRNFIAMGKNYEKALAGVTFAAKGYFDALVKMGELASESQGSK
 ELGDVLFQMAEVHRQIQNQLLEETLKSFNHLLTQLEQKVELDSRYLSAALKKYQTEQRSGDALDKCQAE
 LKKLRKKSQGSKNPQKYSDELQYIDAI SNKQGELENYVSDGYKTALTEERRRF CFLVEKQCAVAKNSAA
 YHSKGKELLAQKLPLWQACADPNKIPDRAVQLMQMANSNGSILPSALSASKSNLVISDPGAKPLPV
 PPELAPFVGRMSAQENVPVMNGVAGPDSYDYNPWADRKAAPKSLSPQSQSKLSDSYSNTLPVRKSVTP
 KNSYATTENKTLPRSSMAAGLERNGRMVKAIFSHAAGDNSTLLSFKEGDLITLLVPEARDGWHYGESE
 KTKMRGWFPFSYTRVLDSDGSDRLHMSLQQGKSSSTGNLLDKDDLALPPPDTGTSRRAFPQTAGTFKQR
 PYSVAVPAFSQGLDDYGARSVSRNPFANVHLKPTVTNDRSAPLLS

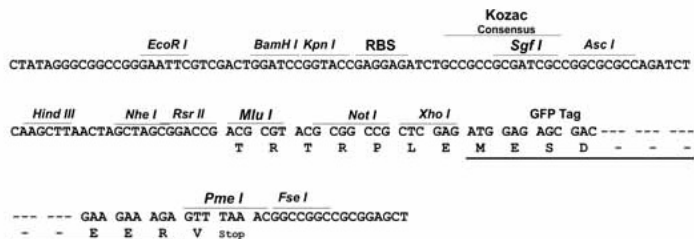
TRTRPLE – GFP Tag – V

Restriction Sites:

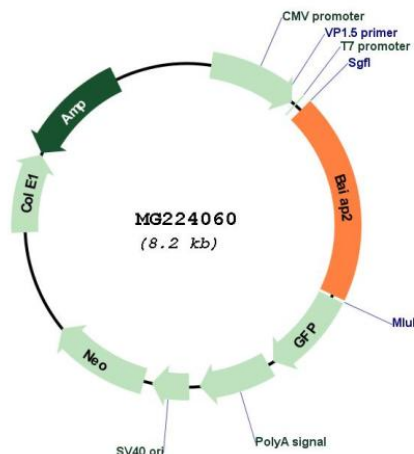
Sgfl-MluI

Cloning Scheme:

Cloning sites used for ORF Shutting:



Plasmid Map:



ACCN:	NM_001037755
ORF Size:	1605 bp
OTI Disclaimer:	The molecular sequence of this clone aligns with the gene accession number as a point of reference only. However, individual transcript sequences of the same gene can differ through naturally occurring variations (e.g. polymorphisms), each with its own valid existence. This clone is substantially in agreement with the reference, but a complete review of all prevailing variants is recommended prior to use. More info
OTI Annotation:	This clone was engineered to express the complete ORF with an expression tag. Expression varies depending on the nature of the gene.
Components:	The ORF clone is ion-exchange column purified and shipped in a 2D barcoded Matrix tube containing 10ug of transfection-ready, dried plasmid DNA (reconstitute with 100 ul of water).
Reconstitution Method:	<ol style="list-style-type: none">1. Centrifuge at 5,000xg for 5min.2. Carefully open the tube and add 100ul of sterile water to dissolve the DNA.3. Close the tube and incubate for 10 minutes at room temperature.4. Briefly vortex the tube and then do a quick spin (less than 5000xg) to concentrate the liquid at the bottom.5. Store the suspended plasmid at -20°C. The DNA is stable for at least one year from date of shipping when stored at -20°C.
RefSeq:	NM_001037755.3 , NP_001032844.2
RefSeq Size:	2083 bp
RefSeq ORF:	1608 bp
Locus ID:	108100
UniProt ID:	Q8BKX1
Cytogenetics:	11 E2
Gene Summary:	Adapter protein that links membrane-bound small G-proteins to cytoplasmic effector proteins. Necessary for CDC42-mediated reorganization of the actin cytoskeleton and for RAC1-mediated membrane ruffling. Involved in the regulation of the actin cytoskeleton by WASF family members and the Arp2/3 complex. Plays a role in neurite growth. Acts synergetically with ENAH to promote filipodia formation. Plays a role in the reorganization of the actin cytoskeleton in response to bacterial infection. Participates in actin bundling when associated with EPS8, promoting filopodial protrusions.[UniProtKB/Swiss-Prot Function]